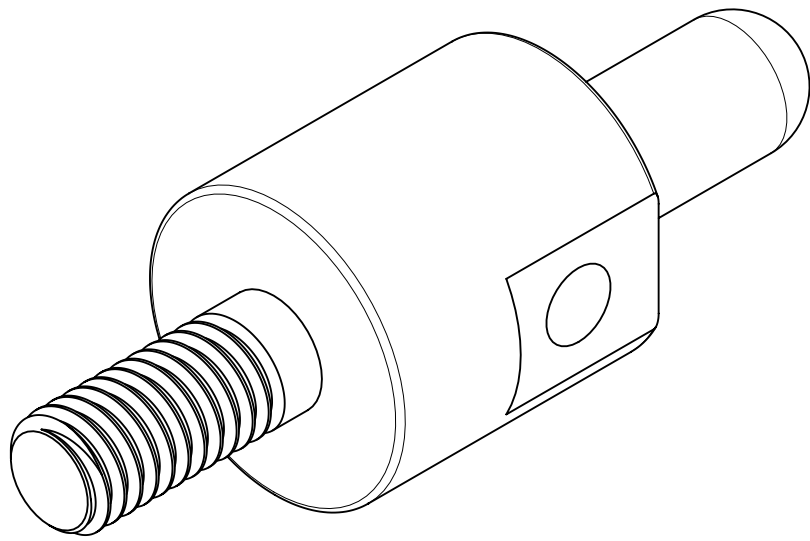
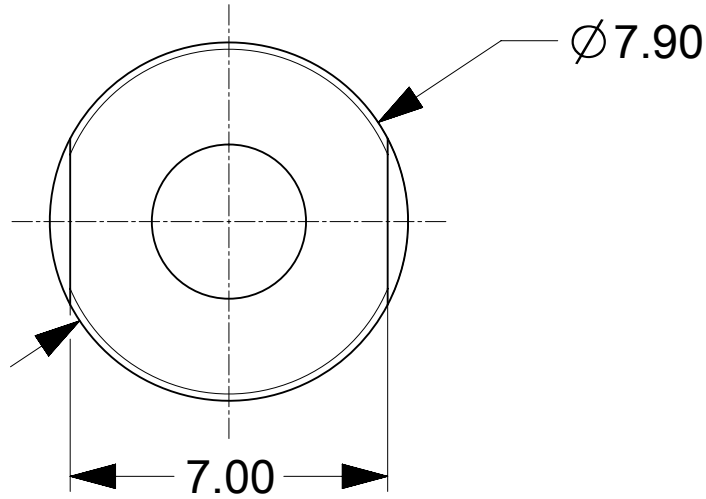
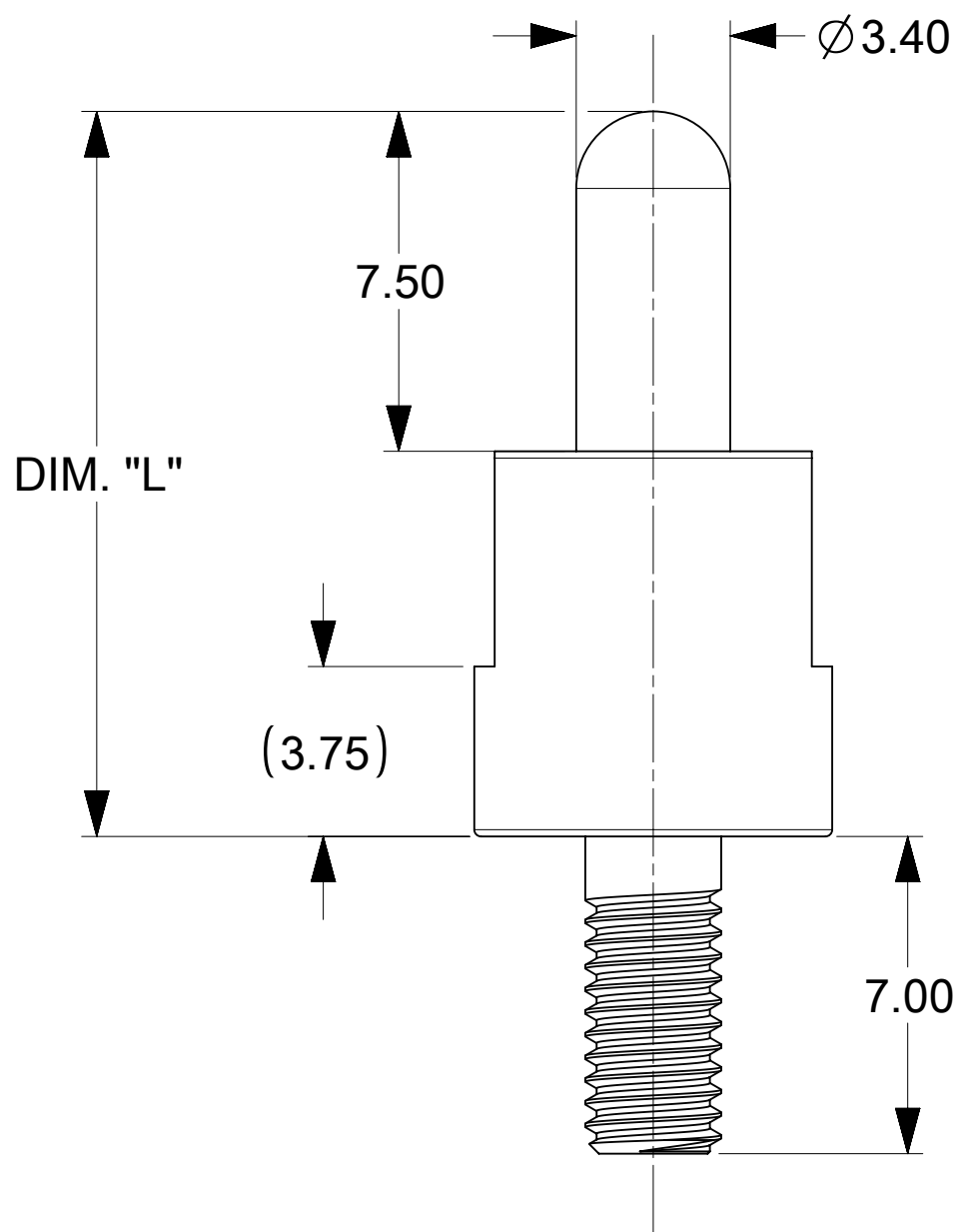


PART NUMBER	DIMENSION "L"
227007-0102	16.00

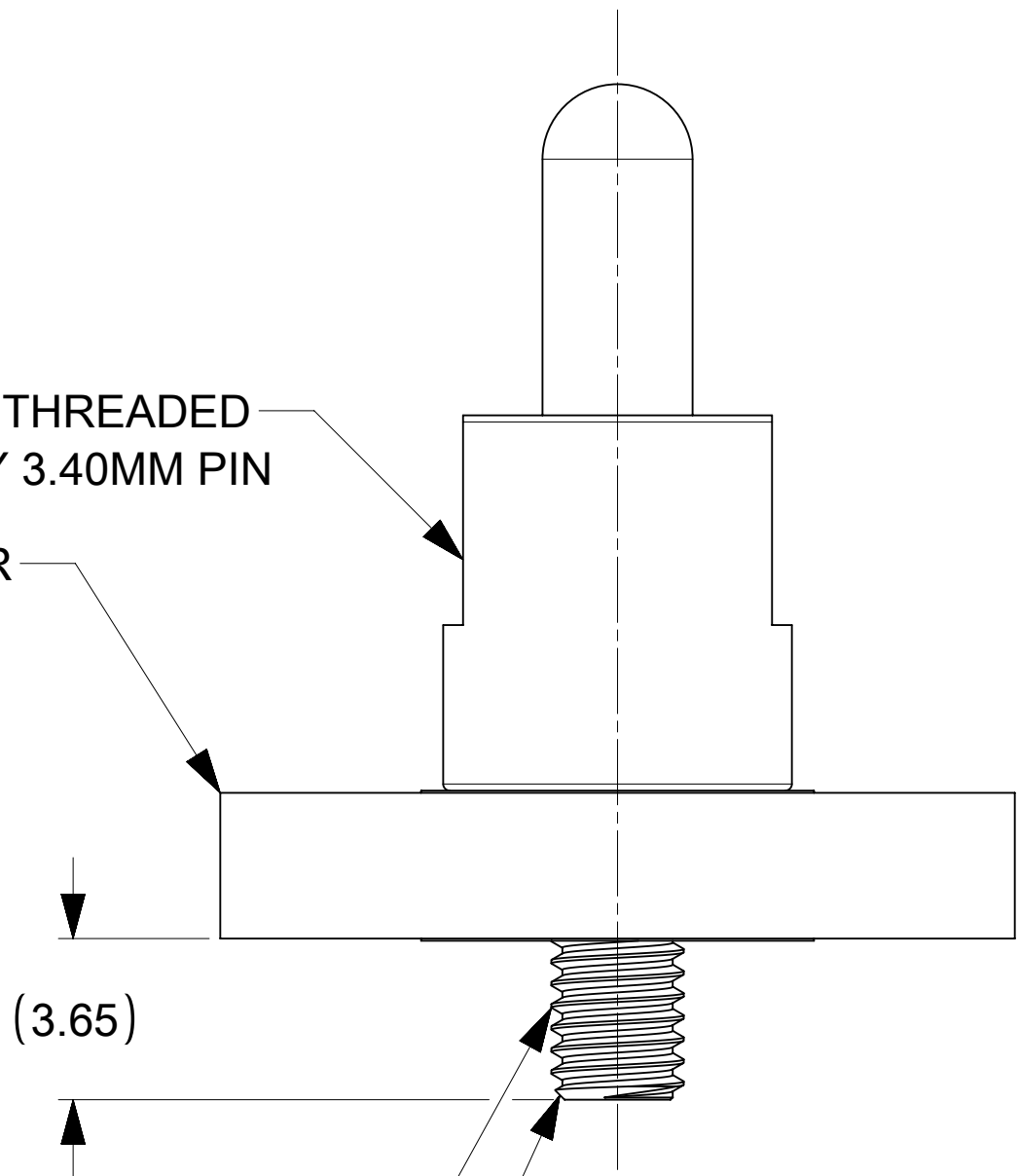


ISOMETRIC VIEW  
(SENTRALITY MALE PIN 3.40MM, EXTERNAL THREADED)



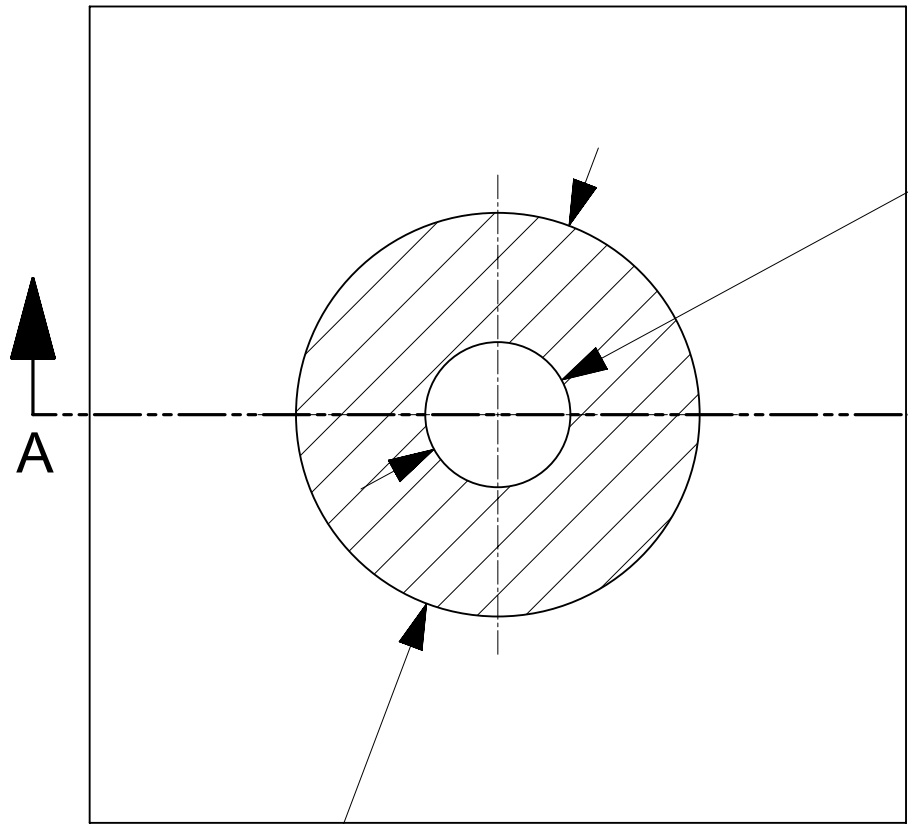
EXTERNAL THREADED  
SENTRALITY 3.40MM PIN

PCB / BUSBAR



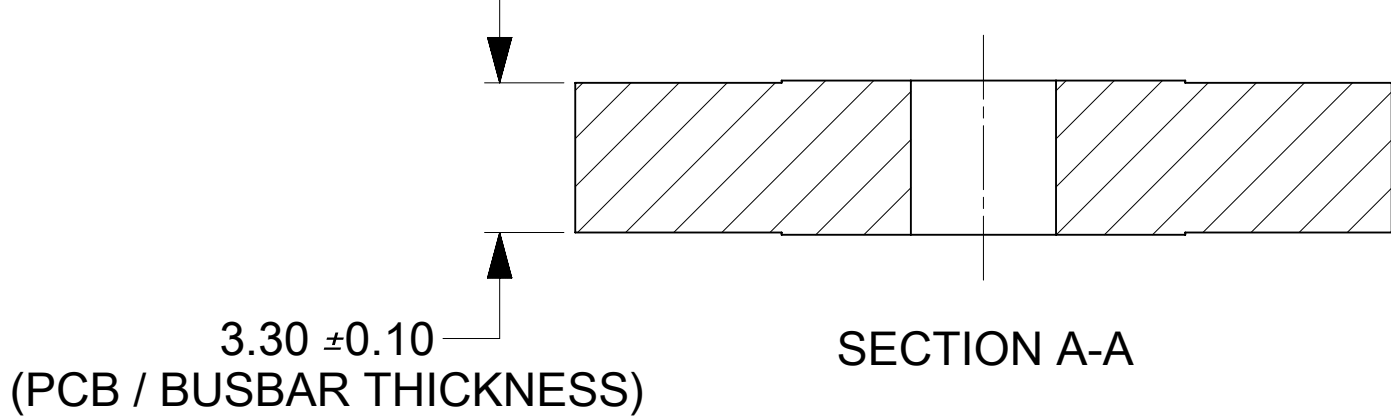
M3 NUT / PEM RECOMMENDED  
(PITCH=0.50MM, HEIGHT=2.00MM)

0.3 LEAD IN  
CHAMFER



Ø3.20 ±0.05 PTH


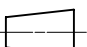
Ø8.90 PAD (2X)  
TOP AND BOTTOM OF THE BOARD



RECOMMENDED PCB / BUSBAR LAYOUT DIMENSIONS

NOTES:

- MATERIALS:  
BASE METAL: HIGH CONDUCTIVE COPPER ALLOY  
PLATING ON BODY : 3.18 MICRON MIN SILVER OVER 1.27 MICRON MIN NICKEL
- PRODUCT SPECIFICATION : 2043130018-PS
- APPLICATION SPECIFICATION : 2043130018-AS
- PACKAGING SPECIFICATION : 2032630006-PK
- SILVER COMPONENTS WILL BE SUPPLIED TARNISH FREE  
BUT MAY TARNISH OVER TIME.
- PART MOUNTED WITH CONDUCTIVE M3 NUT AND  
CONDUCTIVE BELLEVILLE WASHER FOR OPTIMAL PERFORMANCE
- NUTS AND WASHERS ARE NOT SUPPLIED BY MOLEX.

THIS DRAWING CONTAINS INFORMATION THAT IS PROPRIETARY TO MOLEX ELECTRONIC TECHNOLOGIES, LLC AND SHOULD NOT BE USED WITHOUT WRITTEN PERMISSION																	
DIMENSION UNITS		SCALE		CURRENT REV DESC: INITIAL RELEASE				<div>molex</div> <div>3.40MM SENTRALITY MALE PIN EXTERNAL THREADED</div>									
mm		6:1															
GENERAL TOLERANCES (UNLESS SPECIFIED)				EC NO: 785734 DRWN: AKASHM6 2024/05/06 CHK'D: SACHIK7 2024/05/21 APPR: HTHYAGARAJ 2024/06/14								PRODUCT CUSTOMER DRAWING					
ANGULAR TOL		± 0.5°															
4 PLACES		±															
3 PLACES		±															
2 PLACES		± 0.15															
1 PLACE		± 0.25		INITIAL REVISION: DRWN: AKASHM6 2024/05/06 APPR: HTHYAGARAJ 2024/06/14				DOCUMENT NUMBER		DOC TYPE	DOC PART	REVISION					
0 PLACES		±						2270070101		PSD	000	A					
DRAFT WHERE APPLICABLE MUST REMAIN WITHIN DIMENSIONS				THIRD ANGLE PROJECTION		DRAWING		SERIES		MATERIAL NUMBER		CUSTOMER		SHEET NUMBER			
								D-SIZE		227007		SEE TABLE		GENERAL MARKET		1 OF 1	

DOCUMENT STATUS	P1	RELEASE DATE	2024/10/22	05:22:51
-----------------	----	--------------	------------	----------