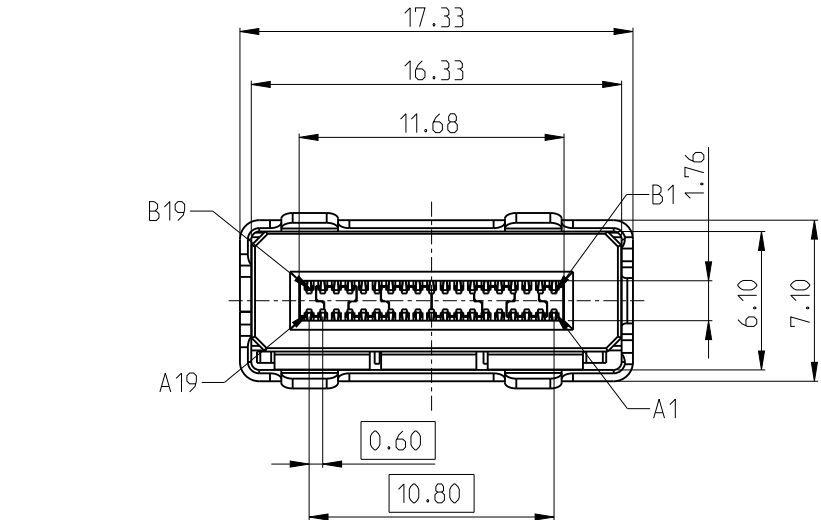


This document is the property of Amphenol Corporation and is delivered on the express condition that is not to be disclosed, reproduced or used, in whole or in part, for manufacture or sale by anyone other than Amphenol Corporation without its prior consent, and that no right is granted to disclose or to use any information in this document.

The marking on this product doesn't contain environmental hazardous materials per directive 2011/65/EU & 2015/863/EU for RoHS compliant & per IEC 61249-2-21 for Halogen-Free compliant.

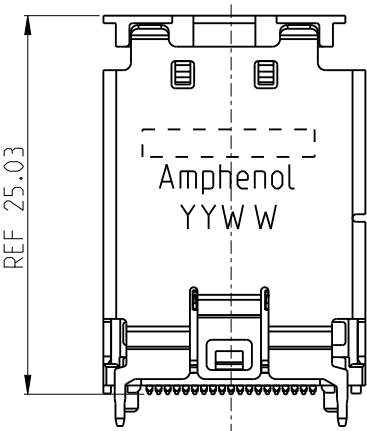
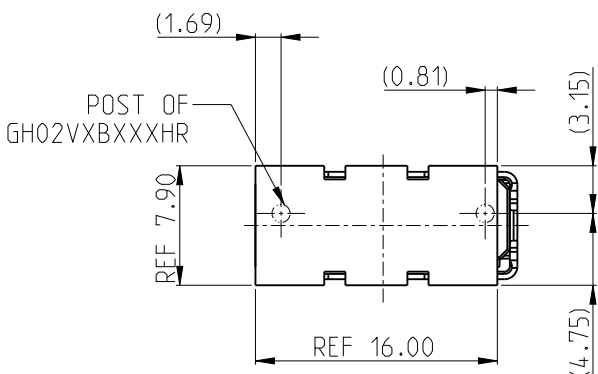
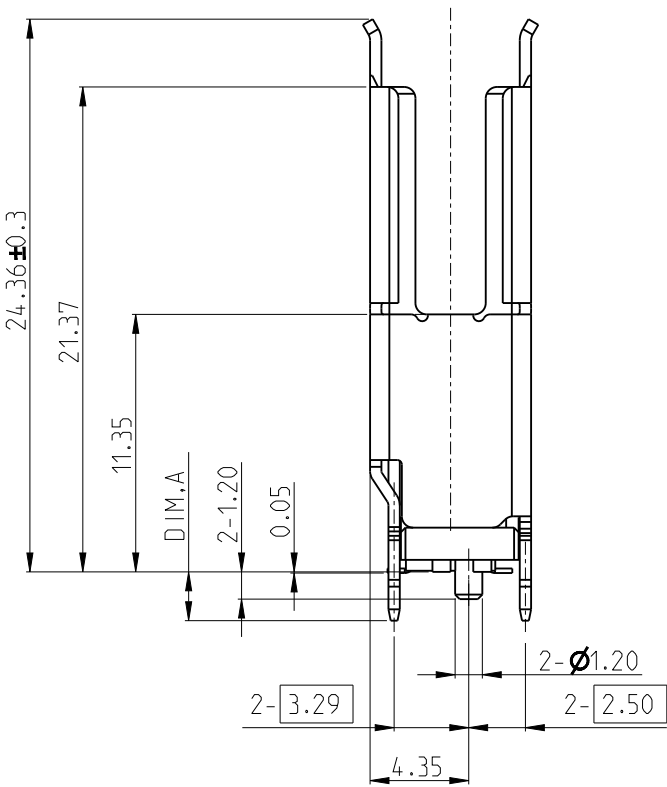
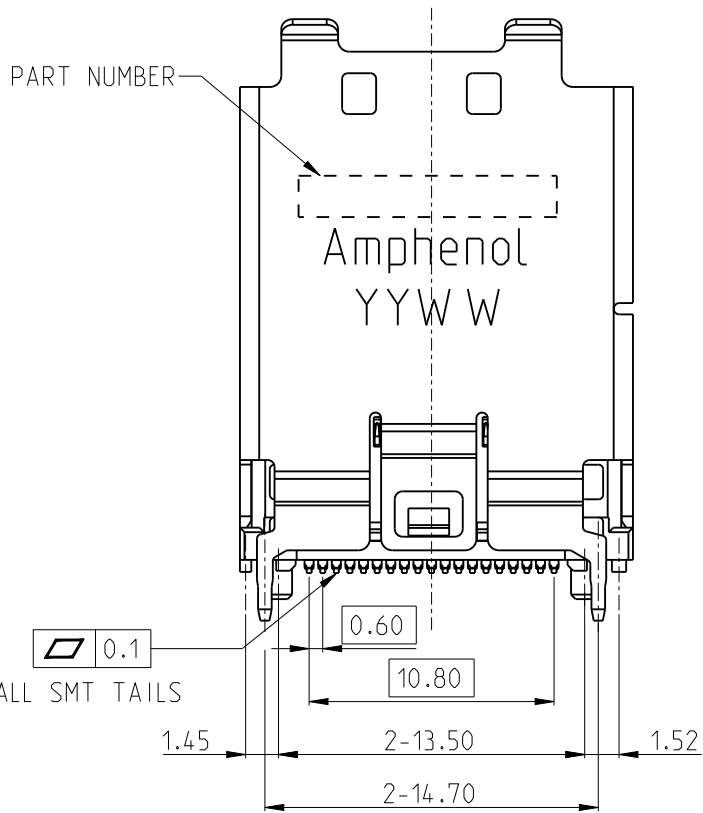
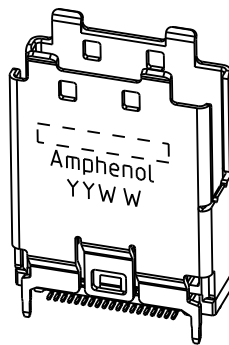


| REVISIONS | | | | |
|-----------|----------|---|------------|-------------|
| SYM | ECN No. | DESCRIPTION | DATE | BY |
| AX6 | NE-24107 | CHENGED THE TITLE | 2024-05-10 | Meichien Wu |
| AX7 | NE-24131 | ADDED SHELL TAIL LENGTH 1.5mm | 2024-06-24 | Meichien Wu |
| AX8 | NE-24136 | ADDED LAYOUT WITH KEEP OUT ZONE CORRECTED SOFT TRAY MATERIAL | 2024-07-03 | Meichien Wu |
| AX9 | NE-24143 | ADDED STANDOFF DIMENSIONS | 2024-07-11 | Meichien Wu |

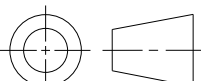


E3 ORTHOGONAL
HYBRID RECEPTACLE
VERTICAL TYPE
CONNECTOR SPEED
2: PCIe 5.0
CHANNEL/PIN QTY
B: 38P
CONTACT FINISH
3: 30u" GOLD

G H02 V X B X X X X HR
COMPLIANT CODE
HR: HALOGEN-FREE & RoHS
VARIATION CODE
BLANK: STANDARD
PACKING CODE
4: HARD TRAY
SHELL PIN LENGTH OPTION(DIM.A)
1: 1.50mm
2: 2.20mm
3: 3.00mm



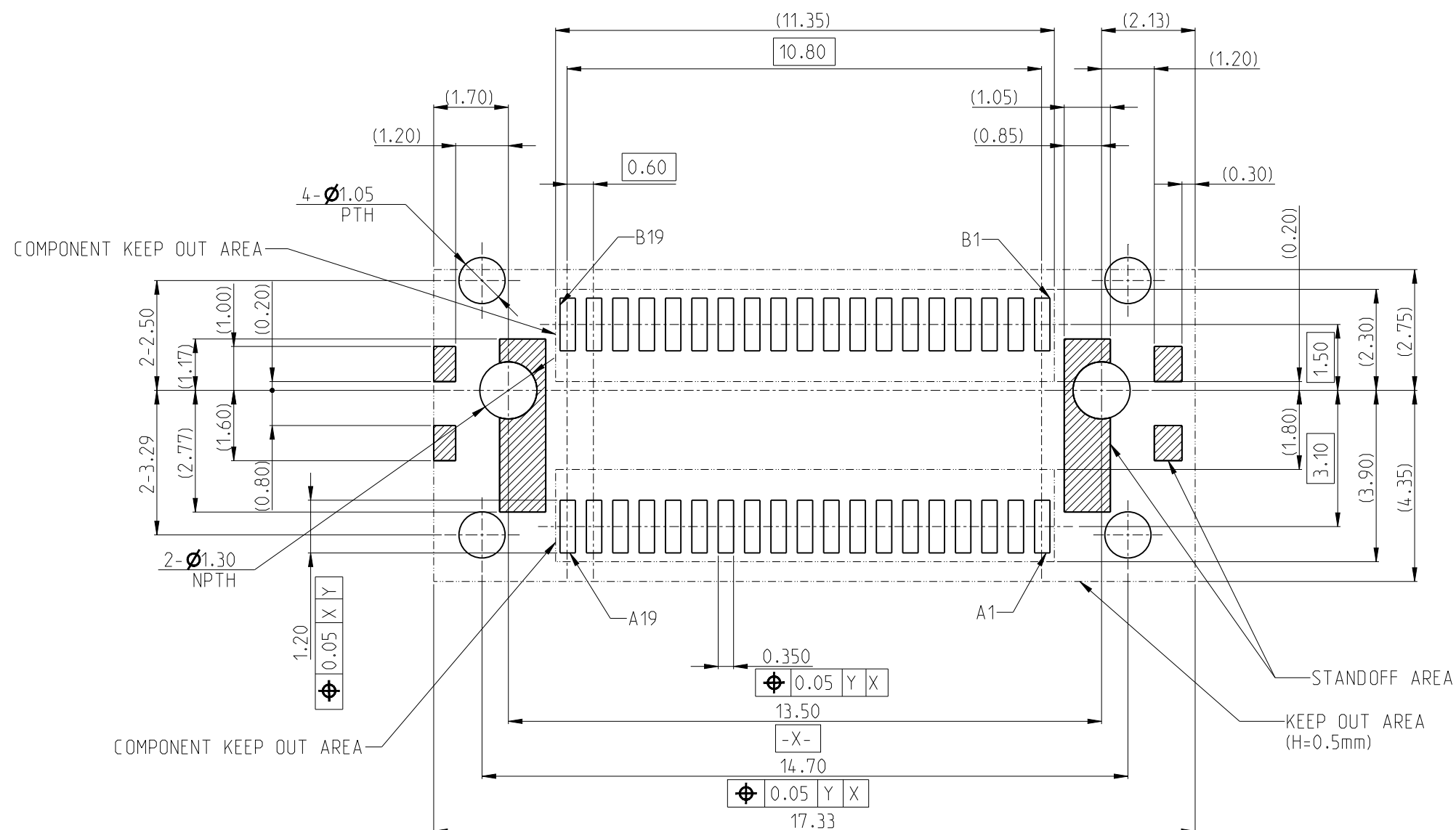
NOTES:
1. MATERIALS:
PLASTICS : HIGH TEMPERATURE THERMOPLASTIC UL94-V0, COLOR: BLACK
SHELL : STAINLESS STEEL
CONTACT: COPPER ALLOY
2. FINISH
TERMINAL :
CONTACT AREA : SELECTED GOLD PLATING
SOLDER AREA : MATTE TIN PLATNG 100u".
UNDER PLATING: NICKEL PLATING 50u"MIN OVERALL.
SHELL: UNDER PLATING: SOLDERABLE NICKEL PLATING 50u" MIN ON SHELL DIPS.
3. THIS PRODUCT DOESN'T CONTAIN ENVIROMENTAL HAZARDOUS MATERIALS
PER DERCTIVE 2011/65/EU & 2015/863/EU FOR RoHS COMPLIANT AND
PER IEC 61249-2-21 FOR HALOGEN FREE COMPLIANT.

| | | | | | | | | | |
|--|--|----------|--------------|------------|---|-------|--|--------------|------|
| TOLERANCE | | DRAWN | APPROVALS | DATE | TITLE MC10 EX ORTHOGONAL HYBRID RECEPTACLE CONNECTOR 38 POS.,0.6PITCH, VERTICAL, SMT TYPE | | Amphenol® Amphenol Corporation Amphenol Taiwan Corporation | | |
| X. X.X ±0.30 X.XX ±0.20 X.XXX ±0.10 ANGULAR ±2° | | DESIGNED | MEICHIE WU | 2024-07-11 | | | | | |
| | | CHECKED | Joan Lu | 2024-07-11 | | | | | |
| | | APPROVED | Hank Hsu | 2024-07-12 | | | | | |
| UNLESS OTHERWISE SPECIFIED | | DWG TYPE | PROJECT CODE | |  | UNIT | SIZE | PART No. | REV. |
| | | CUST DWG | T0775 | | | mm | A3 | GH02VXBXXXHR | |
| | | | | | | SCALE | SHEET | DWG No. | |
| | | | | | | NA | 1 OF 2 | GH02VXBXXXHR | AX9 |


The marking on this product doesn't contain environmental hazardous materials per directive 2011/65/EU & 2015/863/EU for RoHS compliant & per IEC 61249-2-21 for Halogen-Free compliant.



| REVISIONS | | | | |
|-----------|----------|---|------------|-------------|
| SYM | ECN No. | DESCRIPTION | DATE | BY |
| AX6 | NE-24107 | CHANGED THE TITLE | 2024-05-10 | Meichien Wu |
| AX7 | NE-24131 | ADDED SHELL TAIL LENGTH 1.5mm | 2024-06-24 | Meichien Wu |
| AX8 | NE-24136 | ADDED LAYOUT WITH KEEP OUT ZONE CORRECTED SOFT TRAY MATERIAL | 2024-07-03 | Meichien Wu |
| AX9 | NE-24143 | ADDED STANDOFF DIMENSIONS | 2024-07-11 | Meichien Wu |



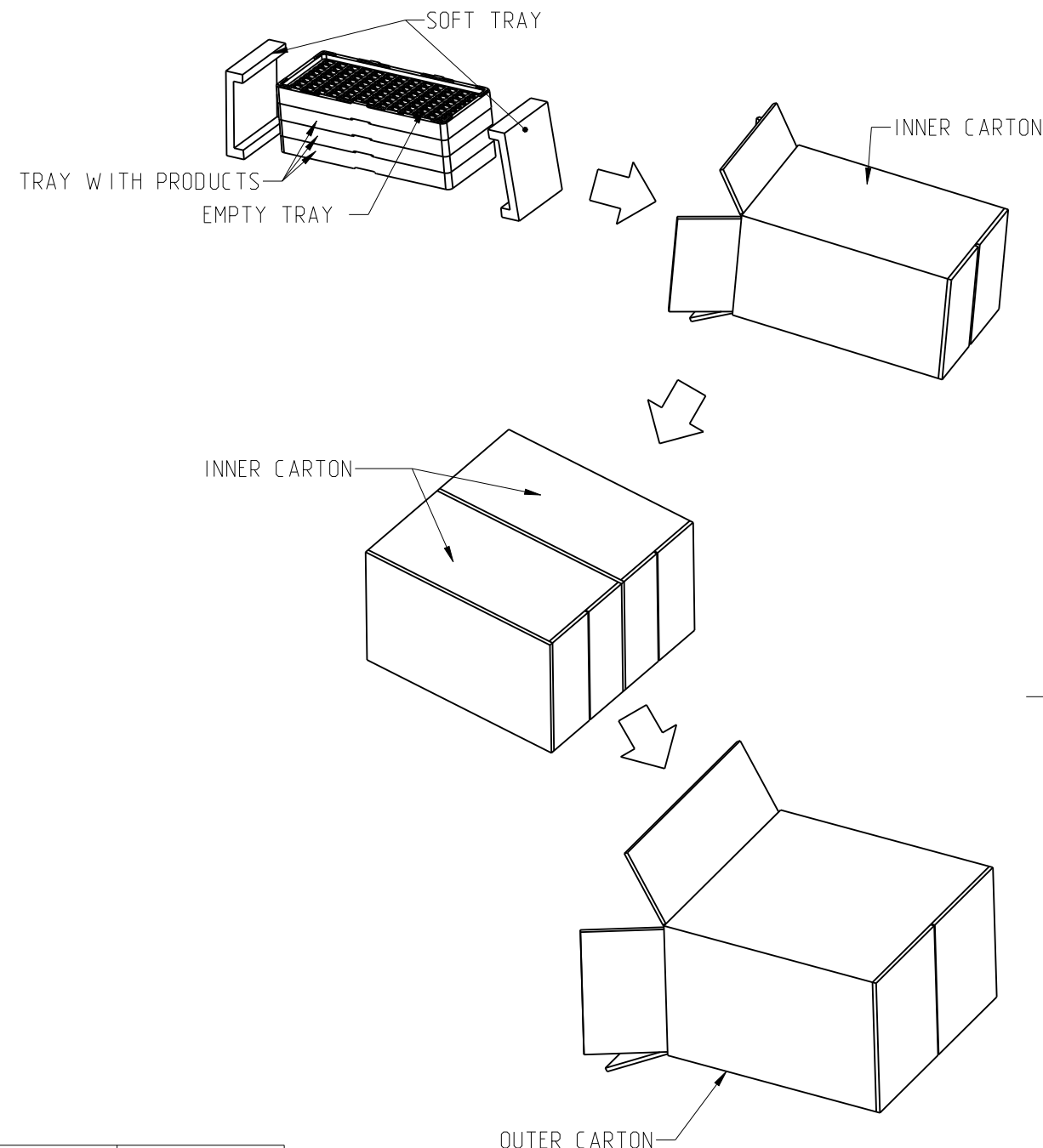
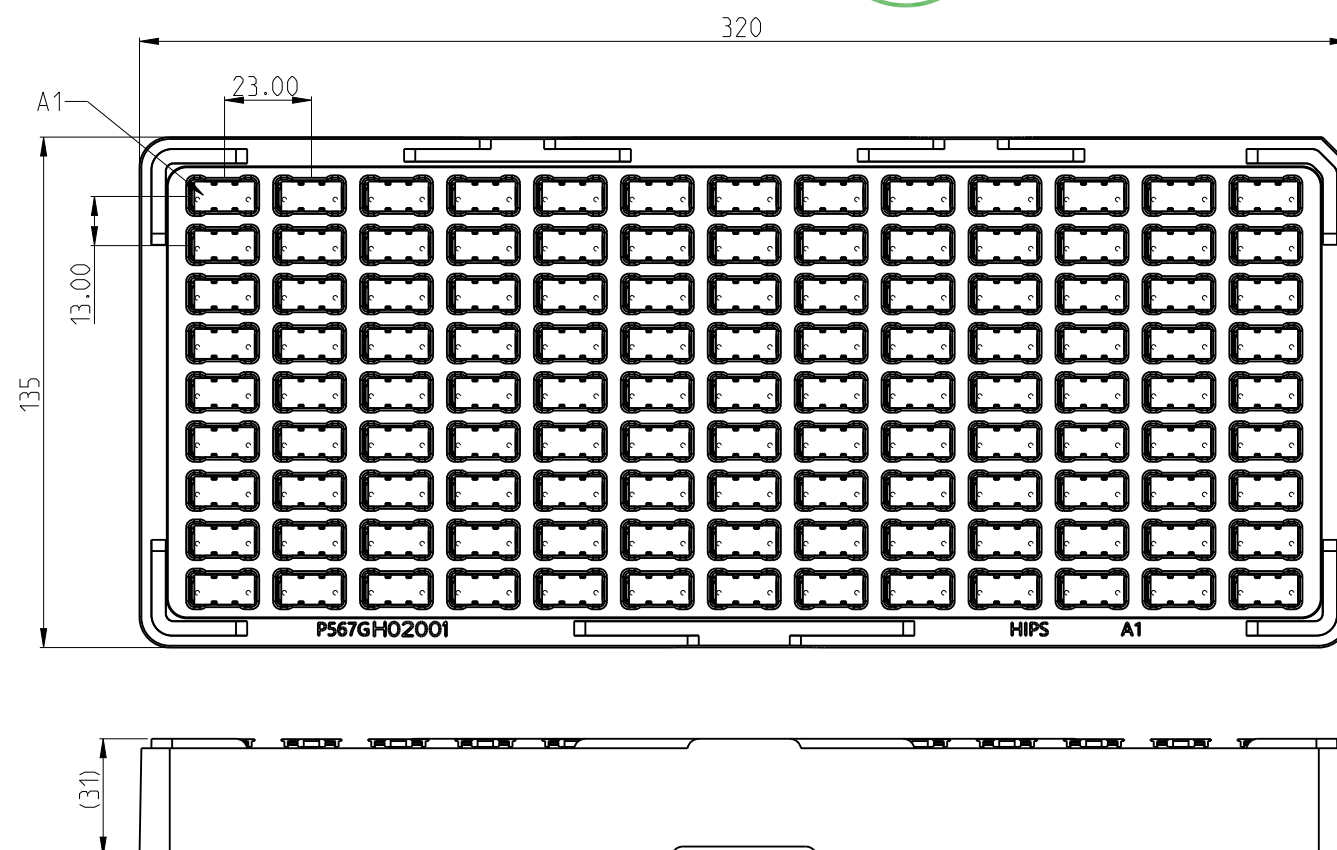
RECOMMENDED PCB LAYOUT
(GENERAL TOLERANCES :+/-0.05)

| | | | | | | | |
|---|--------------------------|-----------------------|---|-----------------|----------|---|-------------|
| TOLERANCE | DRAWN APPROVALS | DATE | TITLE | | | <div>Amphenol®</div> <div>Amphenol Corporation</div> <div>Amphenol Taiwan Corporation</div> | |
| X. X.X ±0.30 X.XX ±0.20 X.XXX ±0.10 ANGULAR ±2° | DESIGNED MEICH IEN WU | 2024-07-11 | <div>MC10 EX ORTHOGONAL HYBRID RECEPTACLE CONNECTOR 38 POS.,0.6PITCH, VERTICAL, SMT TYPE</div> <div></div> | | | | |
| | CHECKED Joan Lu | 2024-07-11 | | | | | |
| | APPROVED Hank Hsu | 2024-07-12 | | | | | |
| UNLESS OTHERWISE SPECIFIED | DWG TYPE CUST DWG | PROJECT CODE T0775 | UNIT mm | SHEET 2 OF 3 | PART No. | GH02VXBXXXHR | |
| | | | SCALE NA | SHEET 2 OF 3 | DWG No. | GH02VXBXXXHR | REV. AX9 |

The marking on this product doesn't contain environmental hazardous materials per directive 2011/65/EU & 2015/863/EU for RoHS compliant & per IEC 61249-2-21 for Halogen-Free compliant.

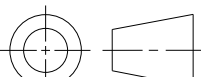


| REVISIONS | | | | |
|-----------|----------|---|------------|-------------|
| SYM | ECN No. | DESCRIPTION | DATE | BY |
| AX6 | NE-24107 | CHANGED THE TITLE | 2024-05-10 | Meichien Wu |
| AX7 | NE-24131 | ADDED SHELL TAIL LENGTH 1.5mm | 2024-06-24 | Meichien Wu |
| AX8 | NE-24136 | ADDED LAYOUT WITH KEEP OUT ZONE CORRECTED SOFT TRAY MATERIAL | 2024-07-03 | Meichien Wu |
| AX9 | NE-24143 | ADDED STANDOFF DIMENSIONS | 2024-07-11 | Meichien Wu |



1. MATERIAL:
HARD TRAY: HIPS
SOFT TRAY: APET
2. THIS PRODUCT DOESN'T CONTAIN ENVIROMENTAL HAZARDOUS MATERIALS PER DERCTIVE 2011/65/EU & 2015/863/EU FOR RoHS AND PER IEC 61249-2-21 FOR HALOGEN FREE.
3. INNER CARTON SIZE: 210L X 350W X 175H
OUTER CARTON SIZE: 225L X 365W X 370H
4. REFER TO AMTA LABELING STANDARD
5. CARTON CLOSURES MUST BE SEALED WITH TAPE.

| PART NUMBER | PRODUCT / TRAY | TRAY / INNER CARTON | INNER CARTON / OUTER CARTON | PRODUCT / OUTER CARTON |
|--------------|----------------|---------------------|-----------------------------|------------------------|
| GH02VXBXX4HR | 117 PCS | 3 | 2 | 702 PCS |

| | | | | | | | |
|---|--------------------------|-----------------------|---|-----------------|----------|--|-------------|
| TOLERANCE | DRAWN APPROVALS | DATE | TITLE | | | <div>Amphenol®</div> <div>Amphenol Corporation Amphenol Taiwan Corporation</div> | |
| X. X.X ±0.30 X.XX ±0.20 X.XXX ±0.10 ANGULAR ±2° | DESIGNED MEICH IEN WU | 2024-07-11 | <div>MC10 EX ORTHOGONAL HYBRID RECEPTACLE CONNECTOR 38 POS.,0.6PITCH, VERTICAL, SMT TYPE</div> <div></div> | | | | |
| | CHECKED Joan Lu | 2024-07-11 | | | | | |
| | APPROVED Hank Hsu | 2024-07-12 | | | | | |
| UNLESS OTHERWISE SPECIFIED | DWG TYPE CUST DWG | PROJECT CODE T0775 | UNIT mm | SIZE A3 | PART No. | GH02VXBXXXHR | |
| | | | SCALE NA | SHEET 3 OF 3 | DWG No. | GH02VXBXXXHR | REV. AX9 |