

6

5

4

3

2

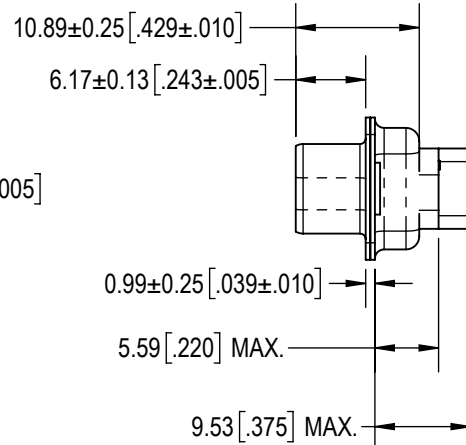
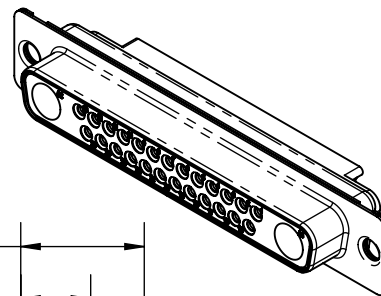
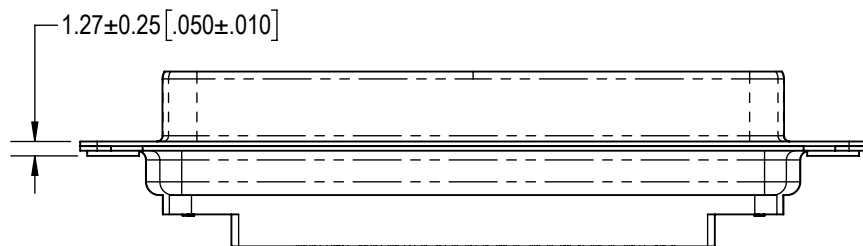
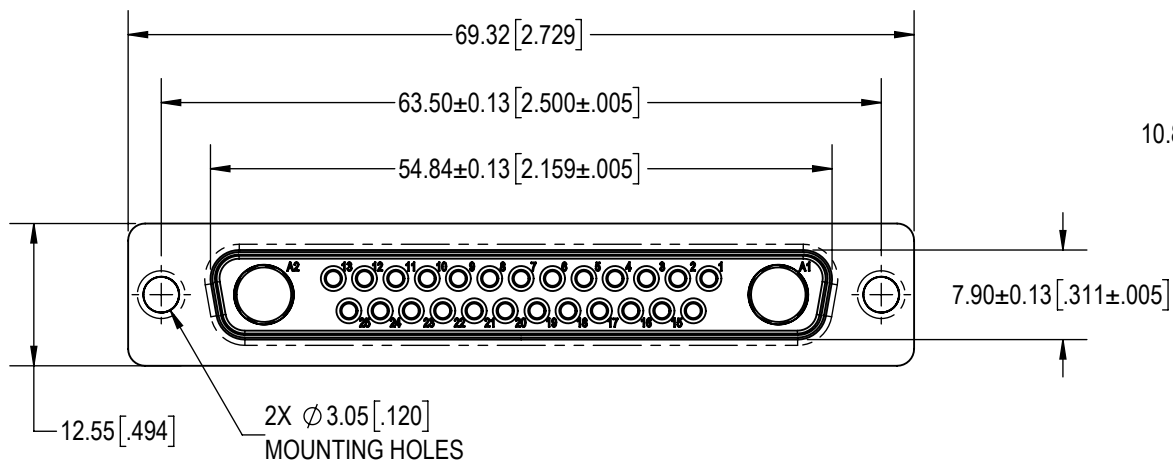
1

D

C

B

A



D

C

B

A

NOTES:

- MATERIAL AND FINISHES:
INSULATOR: GLASS FILLED POLYESTER PER ASTM D 5927, UL 94V-0, COLOR: BLUE.
SHELLS: STEEL, CADMIUM PLATE WITH CHROMATE SEAL.
- DETAILED PRODUCT, MECHANICAL AND ELECTRICAL INFORMATION IS AVAILABLE IN THE LATEST STANDARD DENSITY COMBO-D PRODUCT PUBLICATION AT CONNECTPOSITRONIC.COM

BY KKP	CHK ND	3RD ANGLE 	POSITRONIC BELIEVES THE DATA ON THE DRAWING TO BE RELIABLE. THE USER EMPLOYS SUCH INFORMATION AT HIS OWN DISCRETION AND RISK. POSITRONIC ASSUMES NO RESPONSIBILITY FOR RESULTS OBTAINED OR DAMAGES INCURRED FROM USE OF SUCH INFORMATION IN WHOLE OR IN PART.	 Positronic® CONNECTPOSITRONIC.COM
APR AB	RELEASED DATE: 2023-06-07	SCALE NTS		
TOLERANCES		PART NUMBER	SERIES	
±0.03mm [.001 INCHES] FOR MALE CONTACT MATING DIAMETERS ±0.08mm [.003 INCHES] FOR CONTACT TERMINATION DIAMETERS ±0.13mm [.005 INCHES] FOR ALL OTHER DIAMETERS ±0.38mm [.015 INCHES] FOR ALL OTHER DIMENSIONS ±5° FOR ALL ANGLES DIMENSION ARE IN MILLIMETERS [INCHES]		CBC27W2S0000C		CBC
TITLE		CBC27W2S0000C		
CREATED ON: 2023-06-07		SHEET SHEET 1 OF 1	REV A	

6

5

4

3

2

1