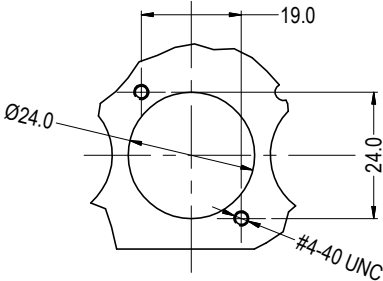


ISS.	AMEND	DATE
1	ISSUED	12/05/17
2	CLIFF LABEL	20/03/19

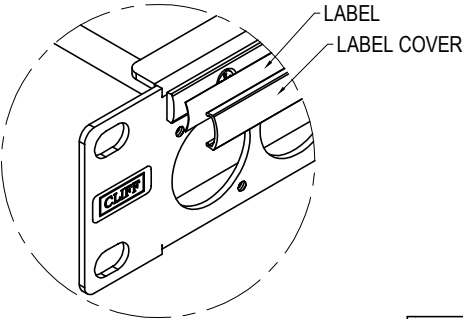
NOTES:-

- 1. SUPPLIED FULLY ASSEMBLED AND INCLUDES 32x #4-40 UNC BLACK COUNTERSUNK SCREWS.
- 2. PANEL TO RACK SCREWS NOT INCLUDED.

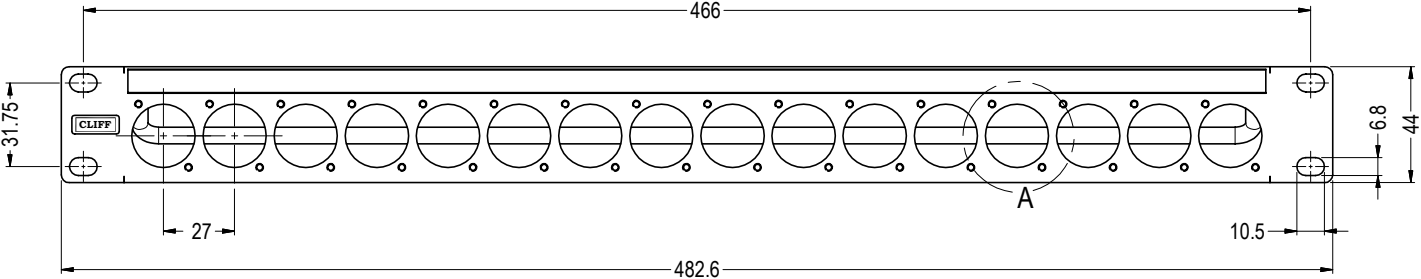
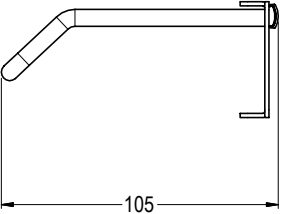
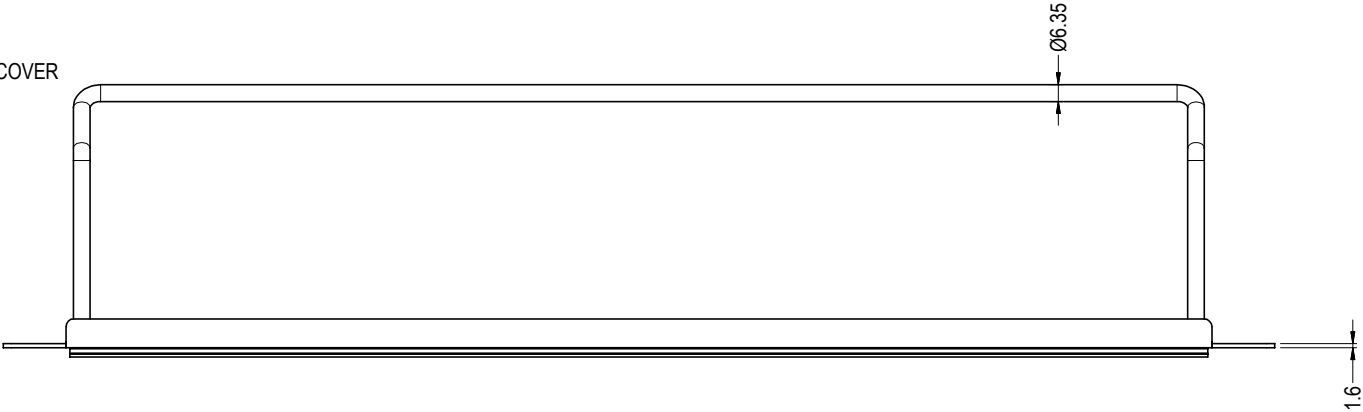
PART	MATERIAL
PANEL	STEEL, BLACK POWDER COATED
CABLE BAR	STAINLESS STEEL
LABEL	PAPER, WHITE
LABEL COVER	THERMOPLASTIC, CLEAR
LABEL BASE	THERMOPLASTIC, CLEAR
SCREWS	STEEL, BLACK



DETAIL VIEW A
(16 POSITIONS)



VIEW SHOWING LABEL &
LABEL COVER REMOVED



RoHS
COMPLIANT

TOLERANCE

- NO DEC. PLACE ±
- 1 DEC. PLACE ±
- 2 DEC. PLACE ±
- HOLE Ø ±
- ANGLES ±
- UNLESS OTHERWISE STATED

Cliff Electronic Components Ltd.

76 Holmethorpe Avenue, Holmethorpe Industrial Estate,
Redhill, Surrey, RH1 2PF, England, UK
Tel: 01737-771375 Fax: 01737-766012 Website: www.cliffuk.co.uk

THE CONTENTS OF THIS DOCUMENT MUST NOT BE COPIED OR DISCLOSED
TO A 3rd PARTY WITHOUT WRITTEN PERMISSION OF CLIFF UK. © 2016

DIMENSIONS IN MILLIMETERS UNLESS OTHERWISE STATED. WORK TO DIMENSIONS. REMOVE ALL BURRS. IF IN DOUBT ASK.

3rd ANGLE PROJECTION:



DO NOT SCALE

MATERIAL: SEE TABLE

FINISH: SEE TABLE

DRAWN: NJB

APPROVED: DPJ

TITLE: 1U x 16 PANEL ASSEMBLY #4-40 UNC HOLES

DRWG. No. CP30152

FORM: A4DRWGH