

NOTE:

1. ELECTRICAL CHARACTERISTICS

- 1-1 RATING CURRENT: 2A AC/DC
1-2 RATING VOLTAGE: 100V AC/DC
1-3 INSULATION RESISTANCE: 500M OHMS MIN
1-4 WITHSTANDING VOLTAGE: 500V AC/1MINUTE
1-5 OPERATING TEMPERATURE: -40°C~+105°C

2. MATERIAL:

- 2-1 HOUSING: LCP, NATURAL COLOR, 94V-0
2-2 CONTACT PIN: PHORPHOS BRONZE
2-3 SOLDER TAB: BRASS

3. MATE WITH AFCI 101565056

4. PRODUCT SPEC: GS-12-1566

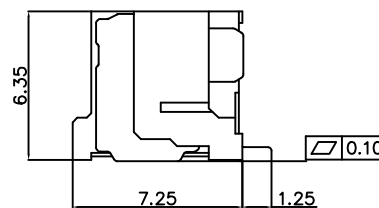
5. ORDERING CODE: 10155053-XX X X LF

NUMBER OF PINS
02~15: 02~15PINS

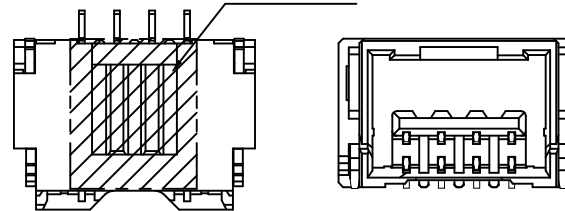
PACKAGE
1: TAPE & REEL

FINISH OF CONTACT PIN
1: MATTE TIN PLATED
2: 30u" Gold ON CONTACT AREA

3D VIEW
SCALE 1:1

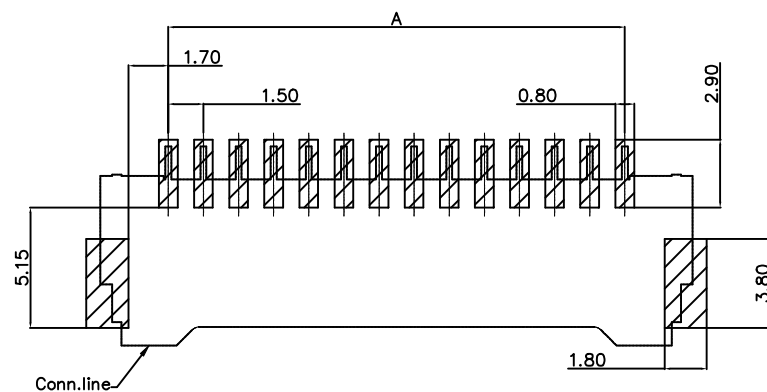
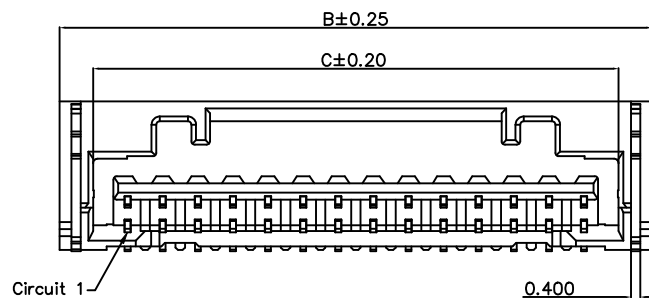
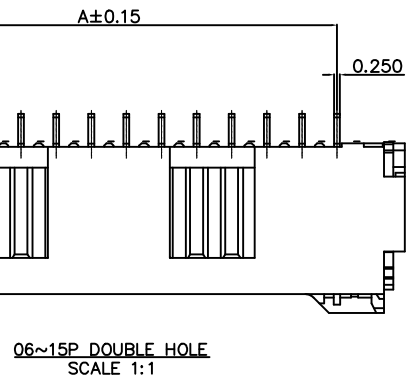


02~05P With
KAPTON TAPE



02~05P SINGLE HOLE
SCALE 1:1

POS	DIMENSIONS(MM)		
	A	B	C
02	1.50	7.30	4.45
03	3.00	8.80	5.95
04	4.50	10.30	7.45
05	6.00	11.80	8.95
06	7.50	13.30	10.45
07	9.00	14.80	11.95
08	10.50	16.30	13.45
09	12.00	17.80	14.95
10	13.50	19.30	16.45
11	15.00	20.80	17.95
12	16.50	22.30	19.45
13	18.00	23.80	20.95
14	19.50	25.30	22.45
15	21.00	26.80	23.95



RECOMMENED PCB LAYOUT
COMPONENT SIDE, GENERAL TOLERABCE ±0.05

mat'l. code				surface	tolerance	projection	product family		
				ISO 1302	ISO 406	ISO 1101	FitMate		
ltr	ecn no	dr	date	tolerances unless otherwise specified			title		
A	New Release	Jason	2020/4/20	angles	.X±.30		1.5mm Pitch HEADER R/A		
B	ELX-N-47289	JH	2022/08/30	linear	.XX±.20	mm			
C	ELX-N-55541	CP Ji	2025/04/22	0'±x'	.XXX±.10	scale 1:1			
				dr	Jason Wang	2019-10-08	dwg no		sheet 1 of 1
				eng	Jason Wang	2020-4-20	10155053		A3
				chr	-	-			
				appd	Tim Yao	2020-4-20	type Product Customer Drawing		
sheet index	revision	C							
	sheet	1							