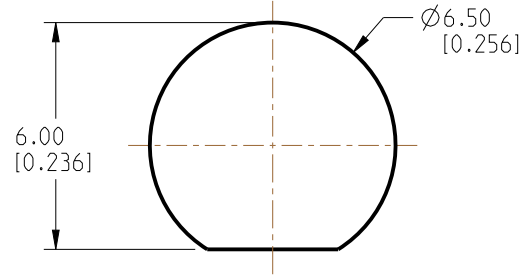


NOTES:

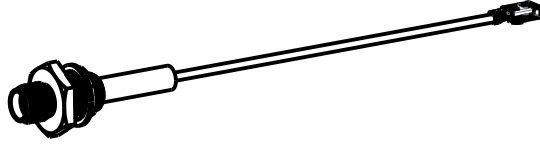
1. MATERIALS AND FINISHES:
SMA STR BHD JACK IP 67 - BRASS, GOLD PLATING
MHF-1-LK RA PLUG - PHOSPHOR BRONZE, GOLD PLATING

CABLE - 1.37 MM CABLE - 30 AWG SILVER PLATED COPPER WIRE
2. ELECTRICAL:
A. IMPEDANCE: 50 OHM
3. PACKAGING:
A. QUANTITY: SINGLE PACK
B. MARKING: BAG TO BE MARKED
"AMPHENOL RF, 95-902-612-XXX AND DATE CODE"

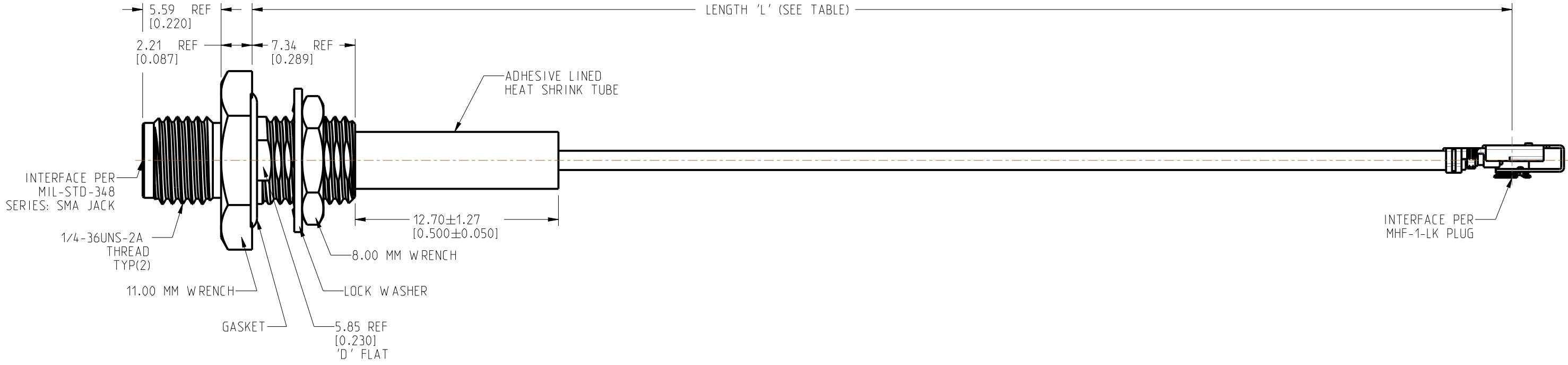
REVISIONS				
REV	DESCRIPTION	DATE	ECN	BY
A	RELEASE TO MFG.	23-OCT-25	17601	KRK



RECOMMENDED MOUNTING HOLE DIMENSIONS



SCALE 0.800



LENGTH TABLE	
PART NUMBER (METRIC)	LENGTH 'L' AND TOLERANCE IN MM (INCHES)
95-902-612-050	50.00 ± 3.81 [1.969 ± 0.150]
95-902-612-100	100.00 ± 3.81 [3.937 ± 0.150]
95-902-612-150	150.00 ± 3.81 [5.906 ± 0.150]
95-902-612-200	200.00 ± 5.08 [7.874 ± 0.200]
95-902-612-250	250.00 ± 5.08 [9.843 ± 0.200]
95-902-612-300	300.00 ± 5.08 [11.811 ± 0.200]
95-902-612-350	350.00 ± 5.08 [13.780 ± 0.200]
95-902-612-400	400.00 ± 5.08 [15.748 ± 0.200]

DESIGN REQUIREMENTS:

☒ FREQUENCY: DC - 6 GHz

☒ CONTINUITY

☐ VSWR: ____ MAX.

☒ HI-POT: 200 VRMS

☐ INS. LOSS: ____ dB MAX.

☐ OTHER:

CUSTOMER OUTLINE DRAWING
ALL OTHER SHEETS ARE FOR INTERNAL USE ONLY

<div>NOTICE: These drawings, specifications, or other data (1) are, and remain the property of Amphenol corp. (2) must be returned upon request; and (3) are confidential and not to be disclosed to any person other than those to whom they are given by Amphenol Corp. The furnishing of these drawings, specifications, or other data by Amphenol Corp., or to any other person to anyone for any purpose is not to be regarded by implication or otherwise in any manner licensing, granting rights to permitting such holder or any other person to manufacture, use or sell any product, process or design, patented or otherwise, that may in any way be related to or disclosed by said drawings, specifications, or other data.</div>				<div>UNLESS OTHERWISE SPECIFIED DIMENSIONS ARE METRIC [INCHES] AND TOLERANCES ARE: <div><div><0.5mm = ±0.05mm</div><div>[<0.020 = ±0.002]</div><div>0.5 - 6mm = ±0.1mm</div><div>[>0.020 - 0.236 = ±0.004]</div><div>>6.00 - 30mm = ±0.2mm</div><div>[>0.236 - 1.181 = ±0.008]</div><div>>30.00 - 120mm = ±0.3mm</div><div>[>1.181 - 4.725 = ±0.012]</div></div></div>				<div>MATERIAL</div> <div>SEE NOTES</div>		<div>TITLE</div> <div>SMA STR BHD JACK IP 67 FRONT MOUNT TO MHF-1-LK RA PLUG USING 1.37 MM CABLE</div>		<div>Amphenol RF</div>															
<div>THIRD ANGLE PROJ. </div>				<div>REFERENCE 95-902-596-XXX</div>		<div>EAR# 13019</div>		<div>ENGR.1 RANISH</div>		<div>ENGR.2</div>		<div>DATE 06-MAY-25</div>		<div>SHEET NO. 2 OF 2</div>		<div>SCALE: 3.5:1.0</div>		<div>SIZE B</div>		<div>DRAWING NO. 95-902-612-XXX</div>		<div>ITEM NO. 95-902-612-XXX</div>		<div>PART NO. 95-902-612-XXX</div>		<div>REV A</div>	