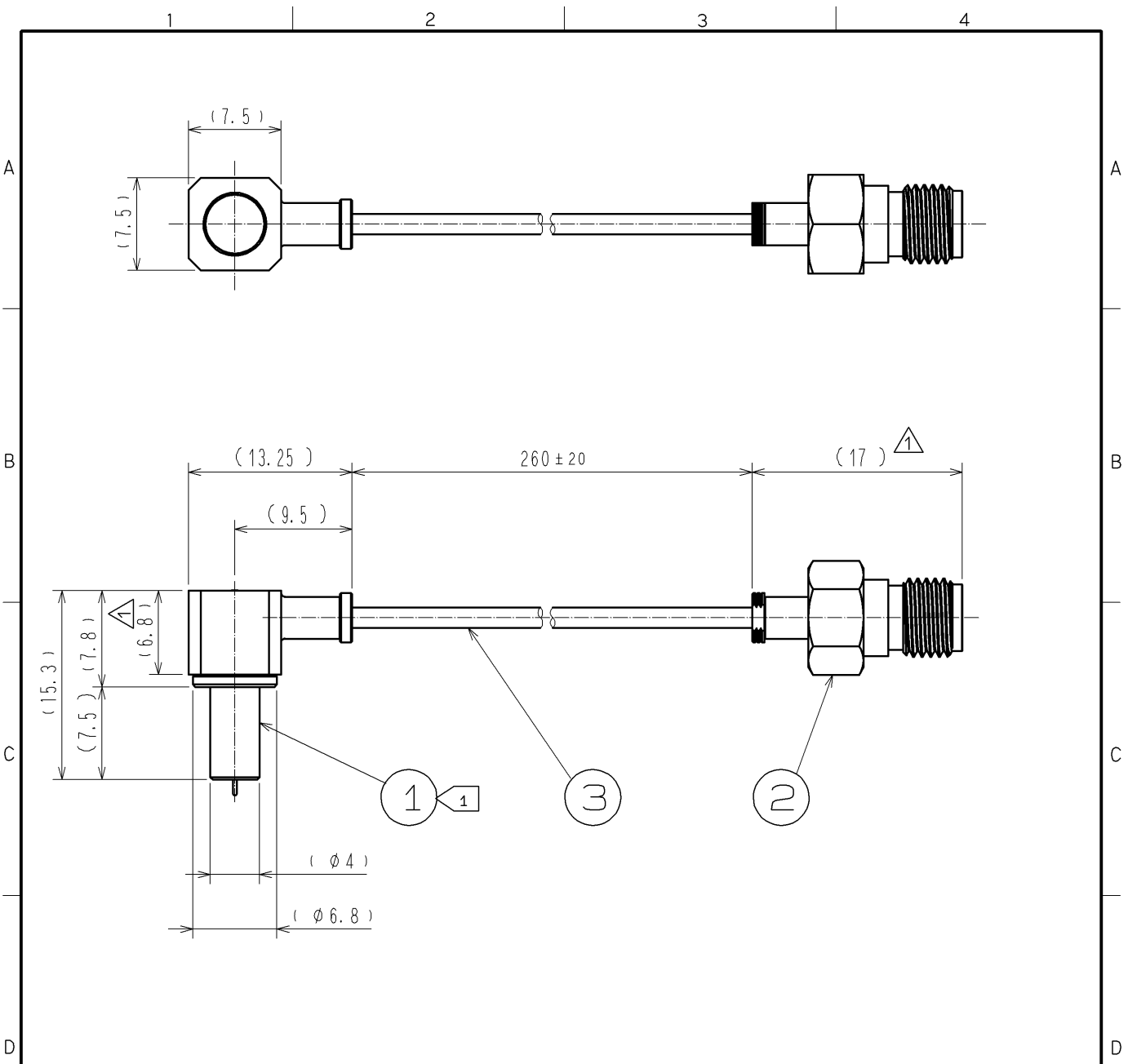




参考図：ご確認用。正式には別途納入仕様書をご請求願います。

2009/10/28 01:40:21 SRoper



NOTE 1 Use this product in the mated condition with MS-166 (CL358-0229-3). Be careful, the thin top center contact of this product is easy to bend, so perpendicular mating and unmating are required.  
 2. This product is not intended to be used for mass production, is only for manual operation.

2	HRM-200-08BJBN(40)	CL323-0801-8-40						
1	MS-166-C(LP)-H1	CL358-0252-5-00	3	DFS111-UL1979	Junkosha, Inc			
NO.	MATERIAL	FINISH, REMARKS	NO.	MATERIAL	FINISH, REMARKS			
UNITS mm		SCALE 2 : 1	COUNT 2	DESCRIPTION OF REVISIONS DIS-J-000841	DESIGNED TS. NAKAGAWA	CHECKED TY. OZAKI	DATE 08.03.25	
<b>HRS</b> HIROSE ELECTRIC CO., LTD.	APPROVED : K.J. KAWAMURA	07.09.20	DRAWING NO. EDC4-180722-00					
	CHECKED : TY. OZAKI	07.09.20	PART NO. MS166LH1-HRMJ-085V260					
	DESIGNED : TS. NAKAGAWA	07.09.20	CODE NO. CL362-0134-8-00					
	DRAWN : TS. NAKAGAWA	07.09.20			1/1			

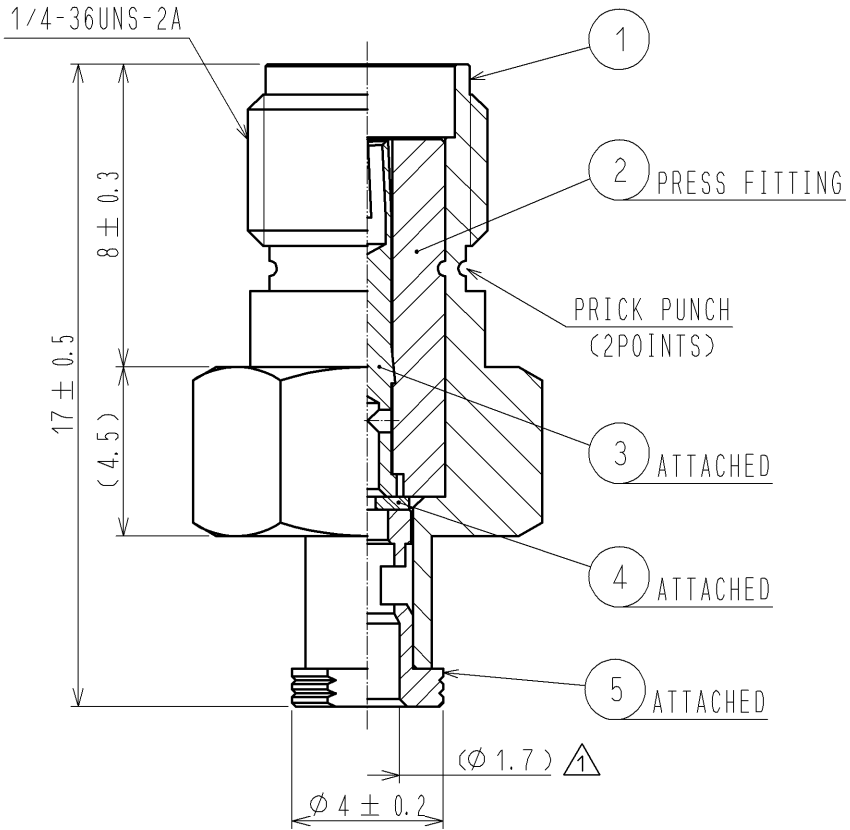
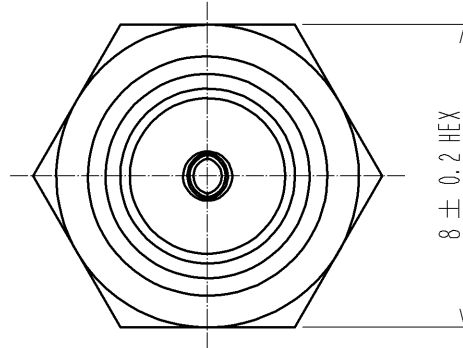
参考図：ご確認用。正式には別途納入仕様書をご請求願います。

△ REDRAWN

CABLE ASSEMBLY TOOL

FOR SOLDERING : △ HRM-200/SO-MD

FOR PRESS FITTING : △ HRM-200-JBN/CV-MD



RoHS COMPLIANT

3	BERYLLIUM COPPER	GOLD PLATING					
2	PTFE		5	BRASS	GOLD PLATING		
1	BRASS	NICKEL PLATING	4	PTFE			
NO.	MATERIAL	FINISH ,	REMARKS	NO.	MATERIAL	FINISH ,	REMARKS

UNITS mm		SCALE 5 : 1	COUNT 4	DESCRIPTION OF REVISIONS DIS-D-001274 (C)	DESIGNED TS. KANEKO	CHECKED TO. KATAYAMA	DATE 08.11.21
APPROVED : IJ. MITANI 05.12.07 CHECKED : NK. NINOMIYA 05.12.07 DESIGNED : YK. YASUMURO 05.12.07 DRAWN : TS. SAWAI 05.12.07				DRAWING NO. EDC4-305373-40 PART NO. HRM-200-088JBN(40) CODE NO. CL323-0801-8-40			