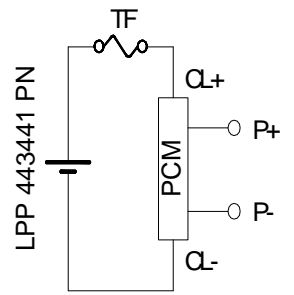
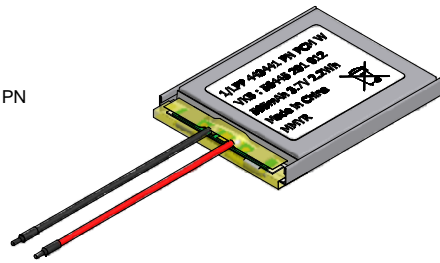
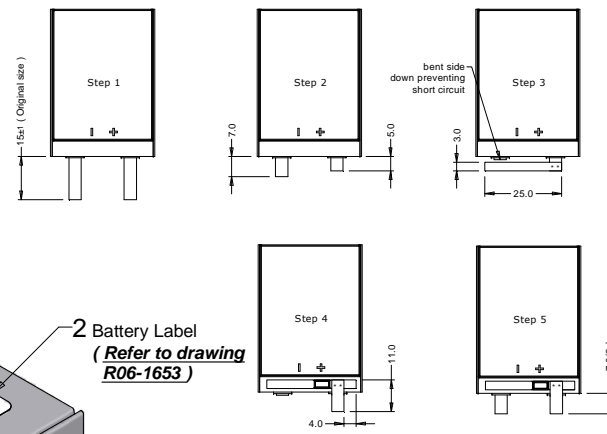


**Assembly Steps**



Circuit diagram

**Specification**

**1. General:**

Battery with safety circuit and wires  
 Cell: LPP 443441 PN  
 PCM: PLFE  
 NTC: None  
 ID: None  
 Configuration: 1S  
 Weight: appr. 13g

**2. Electrical Specification:**

Rated Capacity: 570mAh min, 595mAh typical  
 Nominal Voltage: 3.7V  
 Watt-hour rating: 2.2Wh  
 Charging Method: Constant Current + Constant Voltage  
 Max. Charge Voltage [V]: 4.2 (±0.05mV)  
 Max. Continuous Charge Current: 570mA (limited by cell data sheet)  
 Rec. Charge cut off: 28.5mA or timer 3.0h  
 Max. Continuous Discharge Current: 1140mA (limited by cell data sheet)  
 Rec. Discharge cut off: 3.0V  
 Internal Impedance: approx. 130mΩ  
 Exp. Cycle Life: 300 cycles > 80% of initial cap. (1C), 20°C  
 500 cycles > 70% of initial cap. (1C), 20°C

**Cell protection**

Overcharge Detection: 4.275V ± 0.025V  
 (0.7 to 1.3sec. delay, resume 4.275V ± 0.025V)  
 Overdischarge Detection: 2.30V ± 0.058V  
 (14 to 26 msec. delay, resume 2.30V ± 0.058V)  
 Overcurrent Detection: 2.0A to 4.0A (8 to 16 msec. delay @ discharge)  
 2.0A to 4.0A (11 to 21 msec. delay @ charge)

**3. Ambient Conditions**

Temperature Range  
 -Charge: 0 to +45°C  
 -Discharge: -20 to +60°C  
 -Storage: 6 month at -20 to 35°C  
 -Humidity: 65 ± 20%RH

**4. Environmental and Safety**

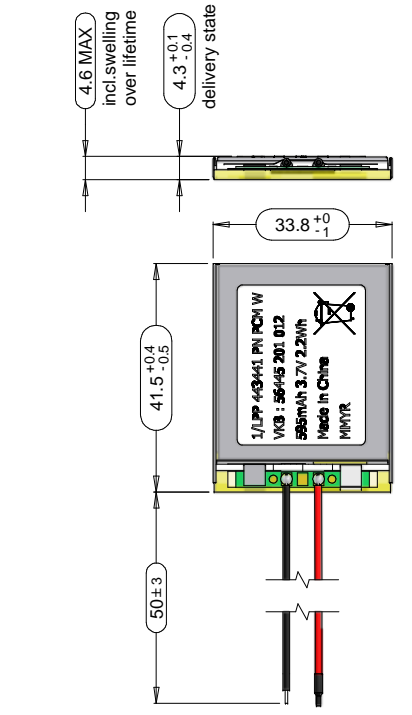
Please follow VARTA Handling and Safety  
 Precautions for Lilon & LiPolymer  
 This battery meets the requirements of Battery Directive  
 and the battery parts are RoHS-Compliant.

- Battery visible surface to be free from scratches, marks and foreign substances
- Production code printed according to MMYR
- Battery label has to be printed by Thermal transfer printer

These dimensions are considered inspectable

0	L045/09	Refer to preliminary drawing P26-10127 Rev.001	2009-09-11	Sony
No	AO No	Revisions	Date	Name
Customer:		Material: Refer to part list #704043	Description: <b>1/LPP 443441 PN PCM W</b> with PCM and wires	
Projection:			Dwg. No:	704043
Dimensions in mm		Prepared & Checked	Verified & Approved	4 0 0
Tolerance: ISO 2768-m		2009-09-11	Sony	
Scale: Not to scale		VKB Order No:		56445 201 012

Rights reserved to make technical changes, as a result of further development, without notice. This drawing is the property of VARTA Microbattery and must not be copied or disclosed to a third party without the written consent of VARTA Microbattery.



View without Kapton tape

