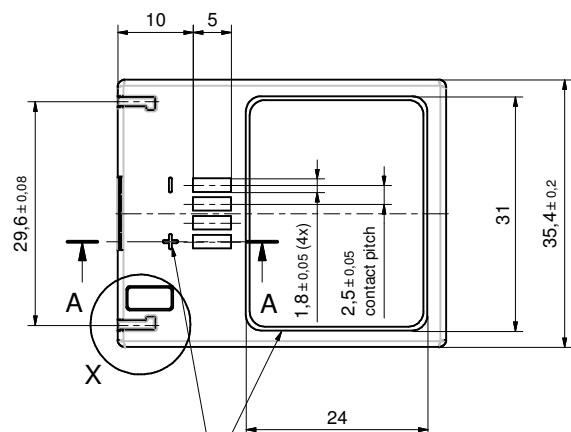
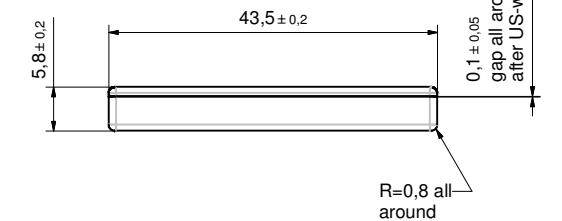
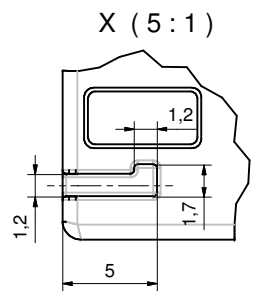


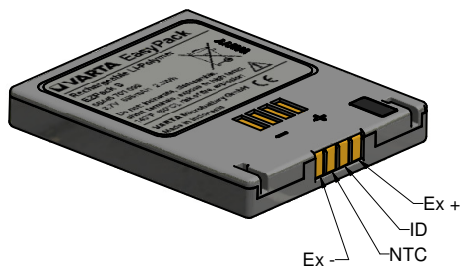
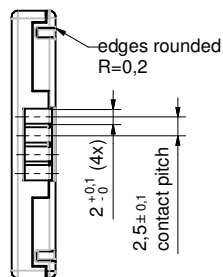
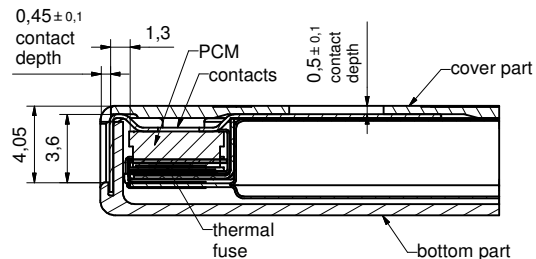
This is a controlled document.
 Hardcopy to be endorsed by authorised person.
 Check with Issuing Officer or SAP system for latest update.



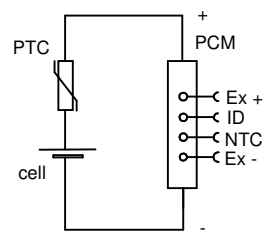
label area and
 + and - symbol
 0,05mm recessed



A-A (5:1)



Circuit diagram



Specification

1.General:

Battery with safety circuit and plastic housing
 Cell: LPP443441PN
 PCM: RP0QKJ04A
 NTC: 10 kOhm ±3%; B-Value 3435K ±3%
 ID: 3,9 kOhm ±1%
 Configuration: 1S
 Weight: approx. 14g

2.Electrical Specification:

Rated Capacity: 570 mAh min, 595mAh typical
 Nominal Voltage: 3.7V
 Watt-hour rating: 2.3Wh
 Charging Method: Constant Current + Constant Voltage
 Max. Charge Voltage [V]: 4.20 (±50mV)
 Max. Continuous Charge Current: 570 mA
 Rec. Charge cut off: by current 12mA or timer 3h
 Max. Continuous Discharge Current: 1140mA
 Rec. Discharge cut off: 3V
 Internal Impedance: approx. 150mOhm
 Exp. Cycle Life: >500 cycles > 70% of initial cap.

Cell protection

Overcharge Detection: 4.3 ± 0.02V
 (0.8 to 1.2 sec. delay, resume 4.1 ± 0.03V)
 Overdischarge Detection: 2.40 ± 0.03V
 (76.8 to 115msec. delay, resume Remove load & charging current)
 Overcurrent Detection: 3.2A to 4.2 A (9,6 to 14,4 msec. delay)

3. Ambient Conditions

Temperature Range
 - Charge: 0 to +45°C
 - Discharge: -20 to +60°C
 - Charge Retention/Storage [%]: 1 year at -20 to +20°C >80%
 3 month at -20 to +45°C >80%
 1 month at -20 to +60°C >80%

Humidity: 65 ± 20%RH

4.Environmental and Safety

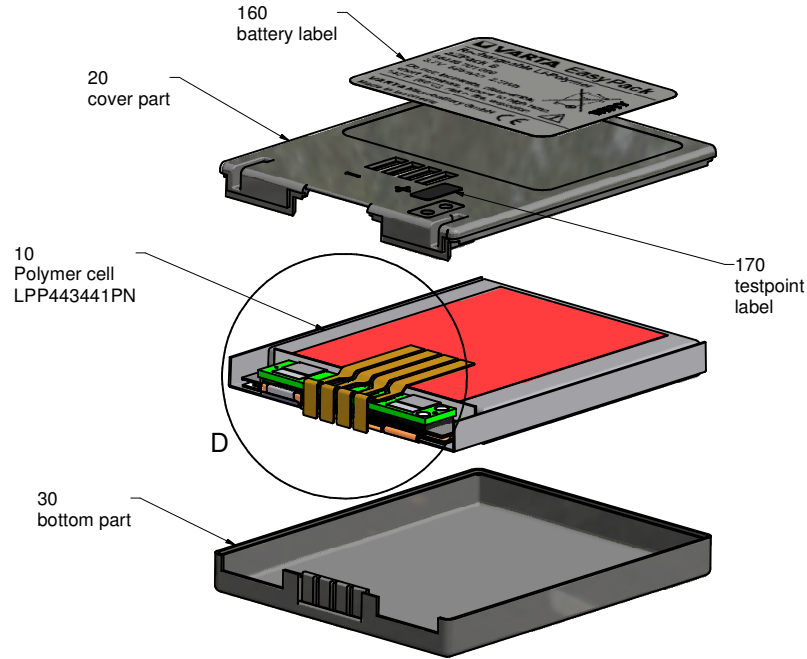
Please follow VARTA Handling and Safety Precautions for Lilon & LiPolymer.
 The cell is approved according UL 1642.
 This battery meets the requirements of Battery Directives, and the battery parts are RoHS-Compliant.

Patent pending

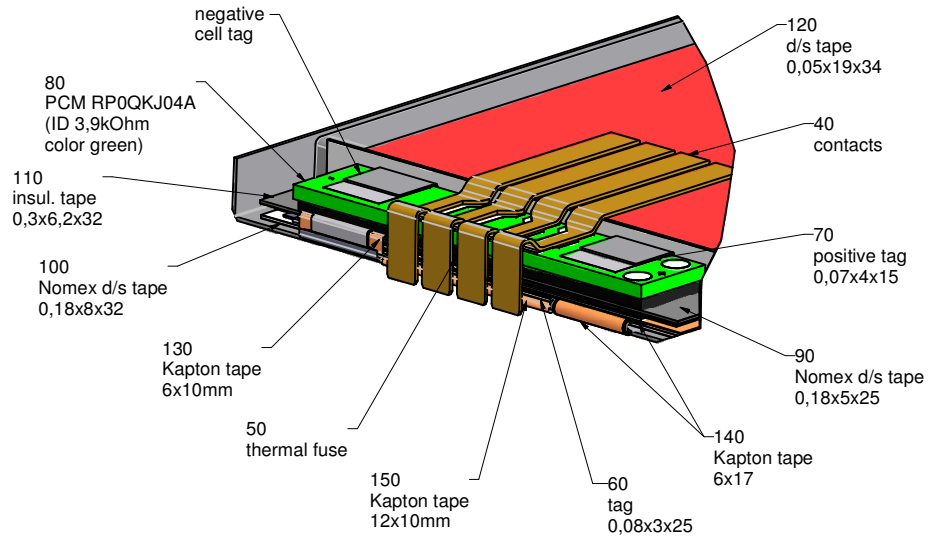
assembly steps see FA703726

				Freigabe	
01		Watt-hour rating 2.3Wh added to specification		20.08.2009 bschweinst	
Index	Änderung / Alteration			Date	Name
Projection:	Freimaßtoleranzen Generaltoleranzen	Diese Maße werden besonders geprüft This dimensions are considered inspectable		Maßstab / Scale	2:1
Maße in mm All dimensions in mm	up to 6 ± 0.1			Material	VKB 56445 701 099
Als Betriebsgeheimnis anvertraut, alle Rechte vorbehalten.	over 6 up to 30 ± 0.2	Est./Orig. 16.07.2009 bschweinst	Date	Name	Benennung / Designation
Proprietary data, company confidential, all rights reserved.	over 30 up to 100 ± 0.3	Est./Orig. 21.08.2009 bschweinst	Est./Orig.		1/LPP443441PN.PCM.PC EZPack S
	over 100 ± 0.5	Est./Orig.			
		Formal Zeichn. / Dwg.Nr.		Status	Index
		2		1	4 01
		Origin:		respl.:	Alloc.:

This is a controlled document.
 Hardcopy to be endorsed by authorised person.
 Check with Issuing Officer or SAP system for latest update.



D (5:1)



Freigabe

01		Watt-hour rating 2.3Wh added to specification		20.08.2009		bschweinst	
Index	Änderung / Alteration			Date	Name		
Projection:		Freimaßtoleranzen General tolerances	Diese Maße werden besonders geprüft This dimensions are considered inspectable		Maßstab / Scale	2:1	
Maße in mm All dimensions in mm	up to 6	± 0.1	Material		VKB 56445 701 099		
Alle Betriebsgehältnisse anvertraut, alle Rechte vorbehalten.	over 6 up to 30	± 0.2	Date	Name	Benennung / Designation		
Proprietary data, company confidential, all rights reserved.	over 30 up to 100	± 0.3	Erst./Orig. 21.08.2009	bschweinst	1/LPP443441PN.PCM.PC EZPack S		
	over 100	± 0.5	Erst./Orig. 21.08.2009	bschweinst	Formal	Zöhung. / Dwg.Nr.	Status Index
		2	703726		Pg	of	Status Index
Origin:		2	703726		2	(2)	4 01
respl.:		respl.:		Alloc.:			