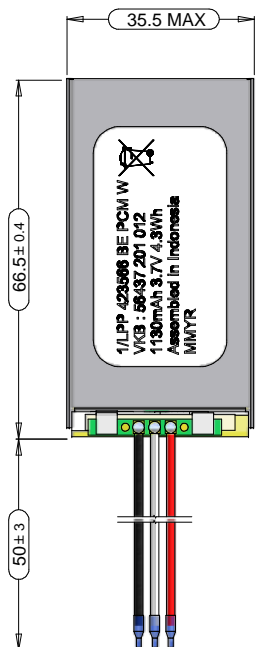
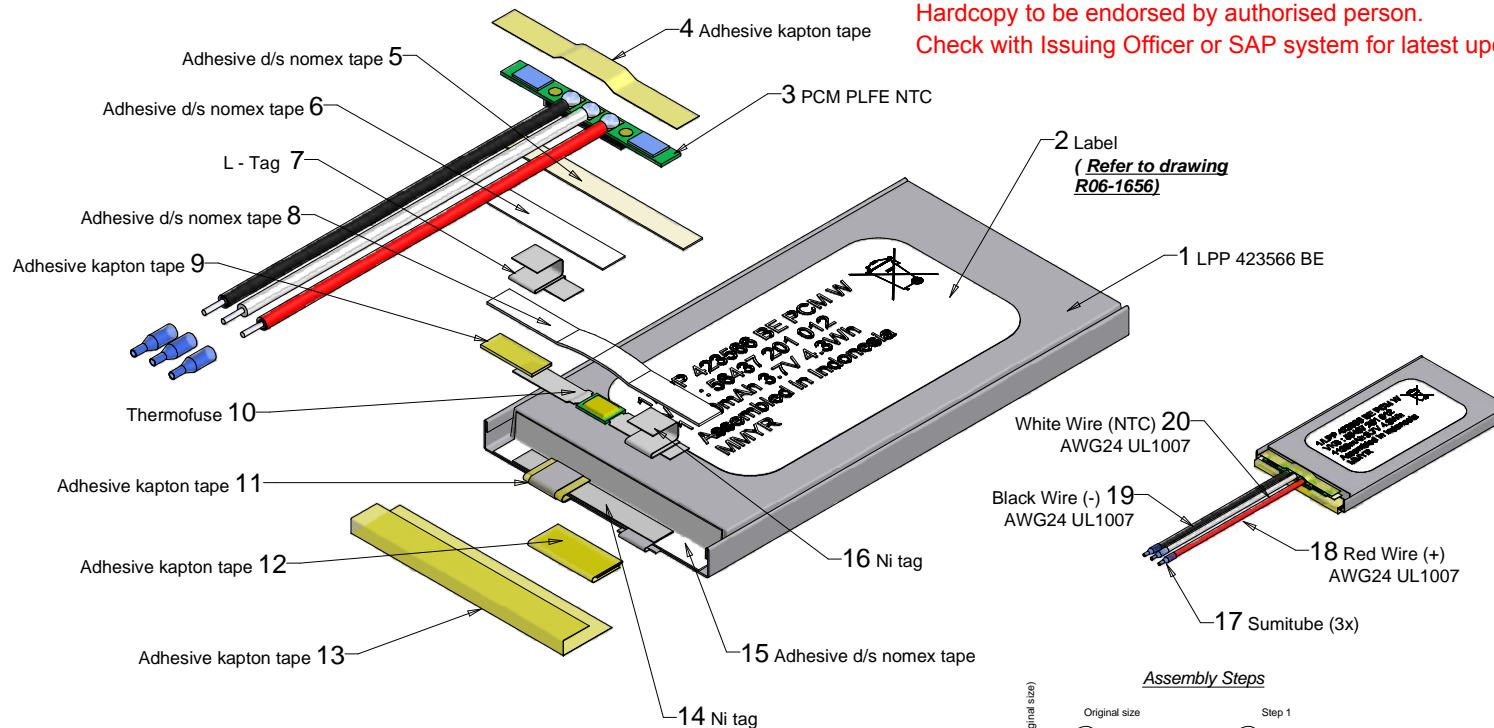
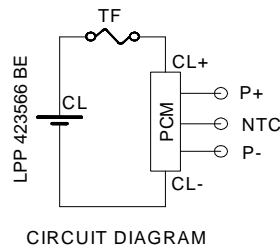
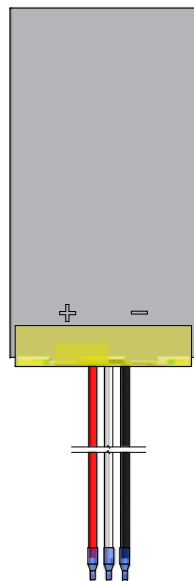
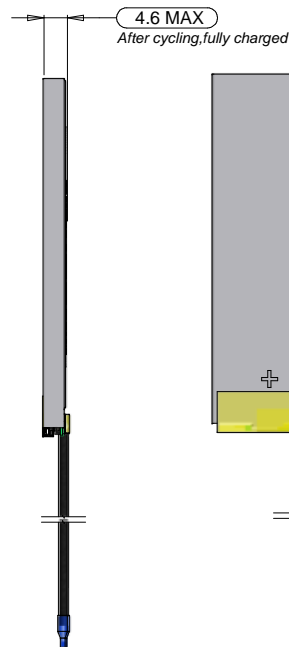


This is a controlled document.
Hardcopy to be endorsed by authorised person.
Check with Issuing Officer or SAP system for latest update.

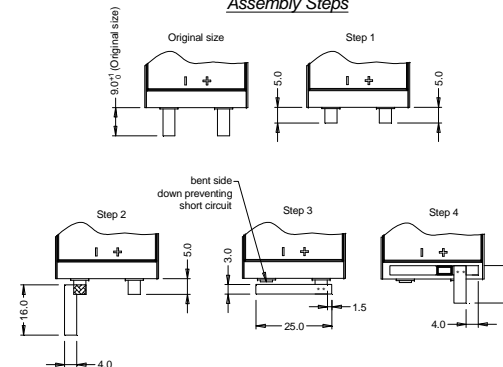


View without Kapton tape



CIRCUIT DIAGRAM

Assembly Steps



- Battery visible surface to be free from scratches, marks and foreign substances
- Production code printed according to MMYR
- Battery label has to be printed by Thermal transfer printer

Specification

1. General:

Battery with safety circuit and wires
Cell: LPP 423566 BE
PCM: PLFE NTC
NTC: 10kΩ ±1%, B-value=3380±1%
ID: None
Configuration: 1S
Weight: appr. 26g

2. Electrical Specification:

Rated Capacity: 1130mAh min, 1160mAh typical
Nominal Voltage: 3.7V
Watt-hour rating : 4.3Wh
Charging Method: Constant Current + Constant Voltage
Max. Charge Voltage [V]: 4.2 (±50mV)
Max. Continuous Charge Current: 1130mA (limited by cell DS)
Rec. Charge cut off: 20mA or timer 2.5h
Max. Continuous Discharge Current: 2000mA (limited by pcm)
Rec. Discharge cut off: 3.0V
Internal Impedance: approx. 120mΩ
Exp. Cycle Life: 400 cycles > 75% of initial cap. (C/2) , 20°C

Cell protection

Overcharge Detection: 4.275V ± 0.025V
(0.7 to 1.3sec. delay, resume min. 4.275V ± 0.025V)
Overdischarge Detection: 2.30V ± 0.058V
(14 to 26 msec. delay, resume 2.30V ± 0.058V)
Overcurrent Detection: 2.0A to 4.0A (8 to 16 msec. delay)

3. Ambient Conditions

Temperature Range
-Charge: 0 to +45°C
-Discharge: -20 to +60°C
-Storage: 6 months at -20 to 35°C
1 month at -20 to 45°C
-Humidity: 65 ± 20%RH

4. Environmental and Safety

Please follow VARTA Handling and Safety
Precautions for Lilon & LiPolymer
This battery meets the requirements of Battery Directive
and the battery parts are RoHS-Compliant

These dimensions are considered inspectable

0		L047/09	Refer to preliminary drawing # P26-10126 Rev.000	2009-10-07	Sony
No	AO No	Revisions		Date	Name
Initiator:		Material:		Description:	
Projection:		Refer to part list #704150		1/LPP 423566 BE PCM W with PCM and wires	
Dimensions in mm		Prepared & Checked	Verified & Approved	Dwg. No:	704150
Tolerance: ISO 2768-m		2009-10-07	Sony		
Scale: Not to scale				VKB Order No:	56437 201 012

Rights reserved to make technical changes, as a result of further development, without notice. This drawing is the property of VARTA Microbattery and must not be copied or disclosed to a third party without the written consent of VARTA Microbattery.