

View without sumitube

Specification

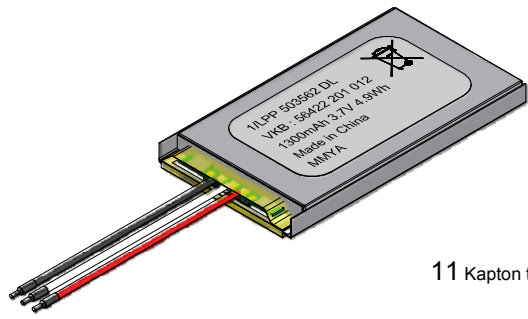
1. General:
 Battery Pack in shrink sleeve incl.safety circuit & wires
 Cell: LPP 503562 DL
 PCM: PLFE
 NTC: 10kΩ ±1%; Bvalue 3380
 ID:None
 Configuration: 1S
 Weight: appr. 22g

2. Electrical Specification:
 Rated Capacity: 1250mAh min, 1300mAh typical
 Nominal Voltage: 3.7V
 Watt-hour rating : 4.9Wh
 Charging Method: Constant Current + Constant Voltage
 Max. Charge Voltage [V]: 4.2 (±50mV)
 Max. Continuous Charge Current: 1250mA (limited by cell DS)
 Rec. Charge cut off: 25mA or timer 3h
 Max. Continuous Discharge Current: 2000mA (limited by PCM)
 Rec. Discharge cut off: 3V
 Internal Impedance: approx.140mΩ
 Exp. Cycle Life:>500 cycles> 70% of initial cap. (0.5C/0.5C)

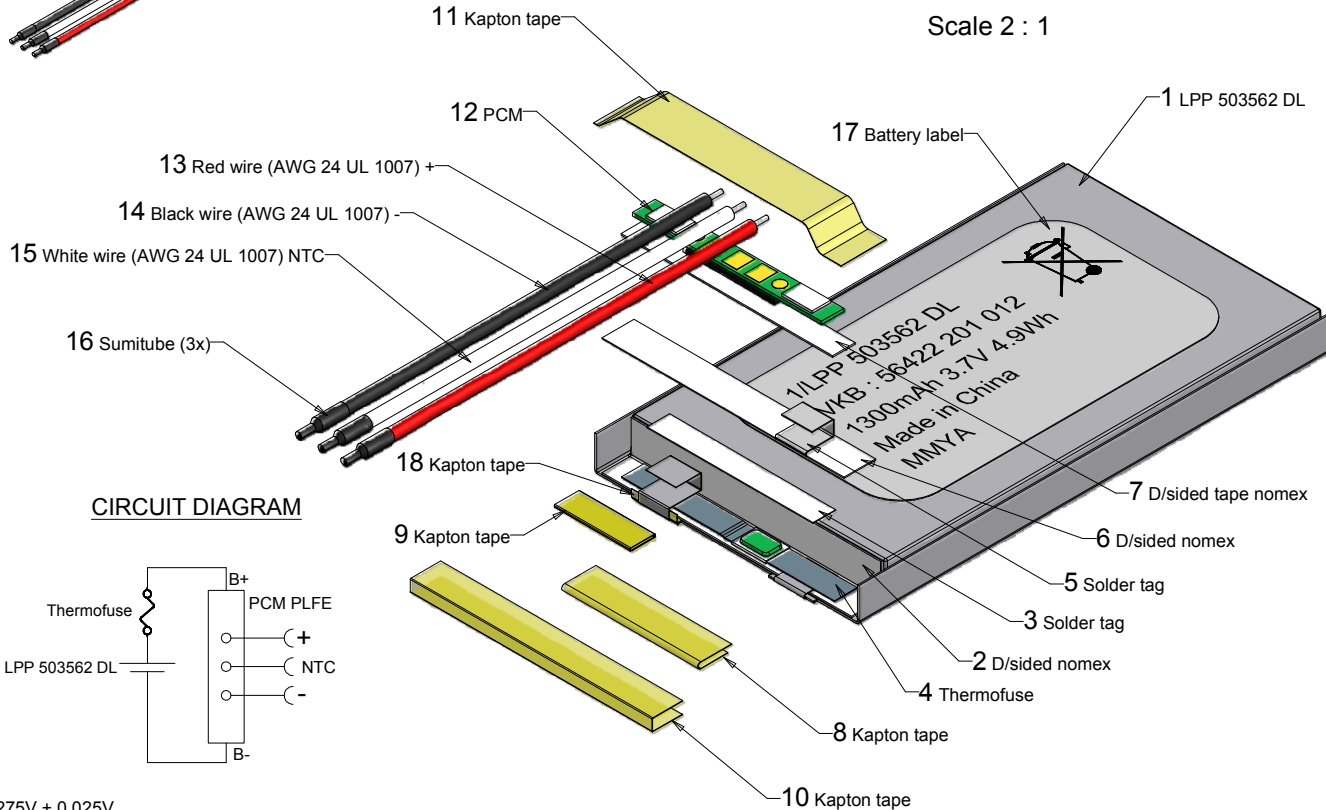
Cell protection
 Overcharge Detection: 4.275V ± 0.025V
 (0.7 to 1.3sec.delay, resume 4.275V ± 0.025V)
 Overdischarge Detection: 2.3V ± 0.058V
 (14 to 26msec.delay, resume 2.3V ± 0.058V)
 Overcurrent Detection: 2A to 4A (8 to 16msec. delay)

3. Ambient Conditions
 Temperature Range
 -Charge: 0 to +45°C
 -Discharge: -20 to +60°C
 -Storage : 1 year at -20 to 35°C
 3 months at -20 to 45°C
 1 month at -20 to 60°C
 -Humidity: 65 ± 20%RH

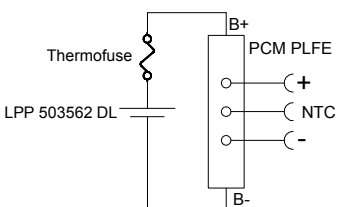
4. Environmental and Safety
 Please follow VARTA Handling and Safety
 Precautions for Lilon & LiPolymer
 The cell is approved according UL 1642 (approval pending)
 This battery meets the requirements of Battery Directives,
 and the battery parts are RoHS-Compliant.



This is a controlled document.
 Hardcopy to be endorsed by authorized person.
 Check with Issuing Office or SAP system for latest update.



CIRCUIT DIAGRAM



These dimensions are considered inspectable

0	L058/08	Refer to preliminary drawing P26-10092 rev 001	2008-10-15	Erwin
No	AO No	Revisions	Date	Name
Customer:		Material: Refer to part list #700742	Description: 1/ LPP 503562 DL PCM W with PCM and wires	
Projection:			Dimensions in mm	Prepared & Checked
Tolerance: ISO 2768-m		2008-06-16	Erwin	Verified & Approved
Scale: 1 : 1 in A3		Dwg. No: 700742		4 0 0
		KVB Order No: 56422 201 012		

Rights reserved to make technical changes, as a result of further development, without notice. This drawing is the property of VARTA Microbattery and must not be copied or disclosed to a third party without the written consent of VARTA Microbattery.

