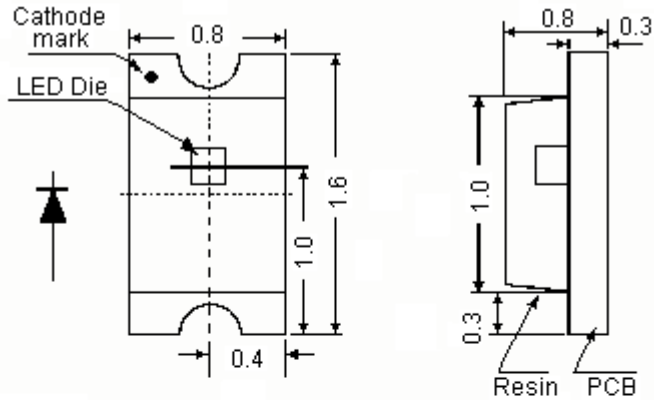


REVISIONS

| ECN # | REV | DESCRIPTION | DRAWN | DATE | CHECKD | DATE | APPRVD | DATE |
|-------|-----|-------------|--------|---------|--------|---------|--------|---------|
| - | A | RELEASED | Geetha | 28/5/08 | Suresh | 28/5/08 | G. C | 12/6/08 |



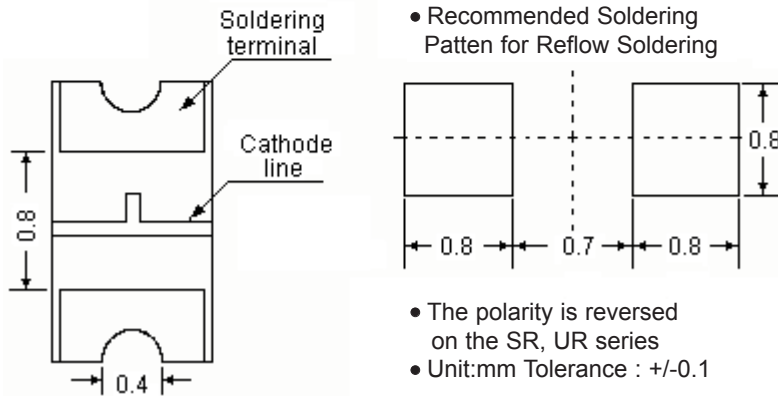
Specifications:

Dice material : GaAlAs.
 Emitted color : Super red.
 Epoxy color : Water clear.
 Peak wavelength : 660nm.
 Viewing angle : 140 degrees.
 Luminous intensity (IV) : 15mcd.



Electrical/Optical Characteristics at T_a = 25°C

| Parameter | Symbol | Minimum | Typical | Maximum | Unit | Test |
|--|----------------|---------|---------|---------|---------|-----------|
| Luminous Intensity | IV | - | 15 | - | mcd | IF = 20mA |
| Viewing Angle | 2θ 1/2 | - | 140 | - | degrees | |
| Peak Emission Wavelength | λ _p | - | 660 | - | nm | - |
| Dominant Wavelength | λ _d | - | 643 | - | | - |
| Spectral Line Half-Width | Δλ | - | 20 | - | | - |
| Forward Voltage | V _F | - | 1.85 | - | V | IF = 20mA |
| Power Dissipation | P _d | - | - | 85 | - | - |
| Peak Forward Current (Duty 1/10 at 1KHz) | IF (Peak) | - | - | 100 | - | - |
| Recommended Operating Current | IF (Rec) | - | 20 | - | mA | - |



Dimensions : Millimetres

This data sheet and its contents (the "Information") belong to the Premier Farnell Group (the "Group") or are licensed to it. No licence is granted for the use of it other than for information purposes in connection with the products to which it relates. No licence of any intellectual property rights is granted. The Information is subject to change without notice and replaces all data sheets previously supplied. The Information supplied is believed to be accurate but the Group assumes no responsibility for its accuracy or completeness, any error in or omission from it or for any use made of it. Users of this data sheet should check for themselves the Information and the suitability of the products for their purpose and not make any assumptions based on information included or omitted. Liability for loss or damage resulting from any reliance on the Information or use of it (including liability resulting from negligence or where the Group was aware of the possibility of such loss or damage arising) is excluded. This will not operate to limit or restrict the Group's liability for death or personal injury resulting from its negligence. SPC MULTICOMP is the registered trademark of the Group. © Premier Farnell plc 2008.

TOLERANCES:
 UNLESS OTHERWISE SPECIFIED, DIMENSIONS ARE FOR REFERENCE PURPOSES ONLY.

| | |
|---------------------|--------------|
| DRAWN BY: | DATE: |
| Geetha | 28/05/08 |
| CHECKED BY: | DATE: |
| Suresh | 28/05/08 |
| APPROVED BY: | DATE: |
| G.Cook | 12/06/08 |

| | | | |
|--------------------------|----------------|------------------------|----------------------|
| DRAWING TITLE: | | | |
| 0603 SMD LED - Super Red | | | |
| SIZE | DWG NO. | ELECTRONIC FILE | REV |
| A | M10001148 | L-S290SRC_DWG | A |
| SCALE: NTS | | U.O.M.: mm | SHEET: 1 OF 4 |



PART NO.

MCL-S290SRC

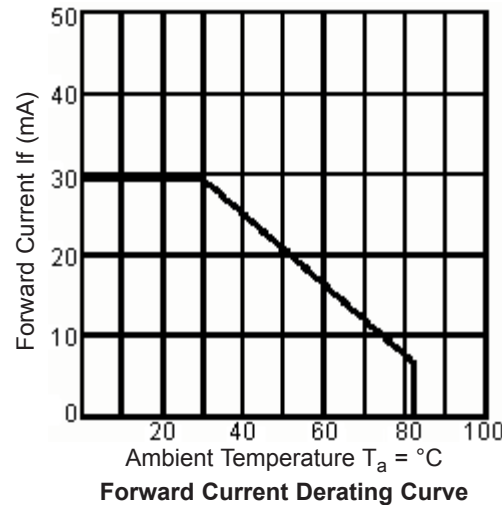
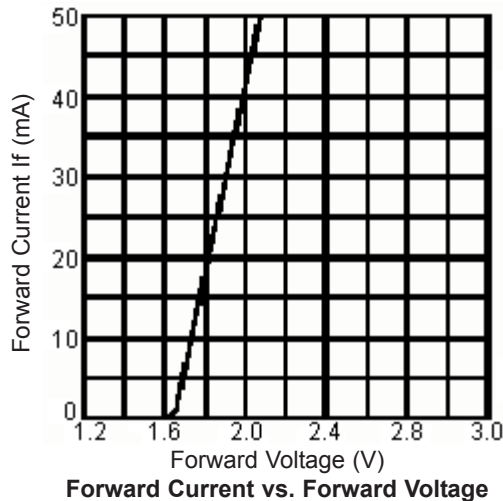
REVISIONS

| ECN # | REV | DESCRIPTION | DRAWN | DATE | CHECKD | DATE | APPRVD | DATE |
|-------|-----|-------------|--------|---------|--------|---------|--------|---------|
| - | A | RELEASED | Geetha | 28/5/08 | Suresh | 28/5/08 | G. C | 12/6/08 |

Absolute Maximum Ratings (T_a = 25°C)

| | |
|---|----------------------------|
| Reverse Voltage | 5 Volt |
| Reverse Current | 10µA (V _R = 5V) |
| Operating Temperature Range | -40°C to 85°C |
| Storage Temperature Range | -40°C to 100°C |
| Lead Soldering Temperature Range 1.6mm (1/16 inch) from body | 260°C for 5 Seconds |

Super Red (GaAlAs) λP = 660nm



This data sheet and its contents (the "Information") belong to the Premier Farnell Group (the "Group") or are licensed to it. No licence is granted for the use of it other than for information purposes in connection with the products to which it relates. No licence of any intellectual property rights is granted. The Information is subject to change without notice and replaces all data sheets previously supplied. The Information supplied is believed to be accurate but the Group assumes no responsibility for its accuracy or completeness, any error in or omission from it or for any use made of it. Users of this data sheet should check for themselves the Information and the suitability of the products for their purpose and not make any assumptions based on information included or omitted. Liability for loss or damage resulting from any reliance on the Information or use of it (including liability resulting from negligence or where the Group was aware of the possibility of such loss or damage arising) is excluded. This will not operate to limit or restrict the Group's liability for death or personal injury resulting from its negligence. SPC MULTICOMP is the registered trademark of the Group. © Premier Farnell plc 2008.

TOLERANCES:

UNLESS OTHERWISE SPECIFIED, DIMENSIONS ARE FOR REFERENCE PURPOSES ONLY.

| | |
|---------------------|--------------|
| DRAWN BY: | DATE: |
| Geetha | 28/05/08 |
| CHECKED BY: | DATE: |
| Suresh | 28/05/08 |
| APPROVED BY: | DATE: |
| G.Cook | 12/06/08 |

DRAWING TITLE:

0603 SMD LED - Super Red

| | | | |
|-------------------|-----------------------------|---|----------------------|
| SIZE A | DWG NO. M10001148 | ELECTRONIC FILE L-S290SRC_DWG | REV A |
| SCALE: NTS | | U.O.M.: mm | SHEET: 2 OF 4 |



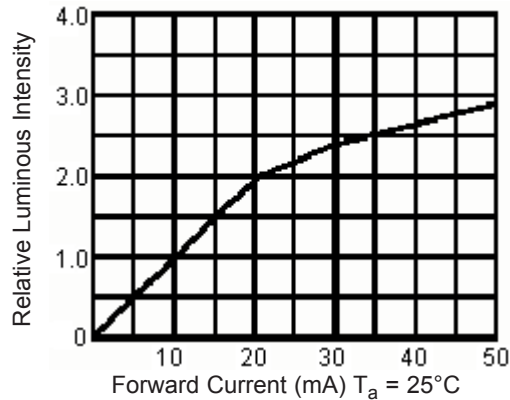
PART NO.

MCL-S290SRC

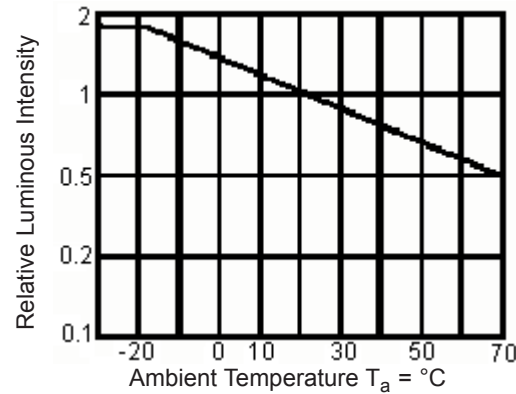
REVISIONS

| ECN # | REV | DESCRIPTION | DRAWN | DATE | CHECKD | DATE | APPRVD | DATE |
|-------|-----|-------------|--------|---------|--------|---------|--------|---------|
| - | A | RELEASED | Geetha | 28/5/08 | Suresh | 28/5/08 | G. C | 12/6/08 |

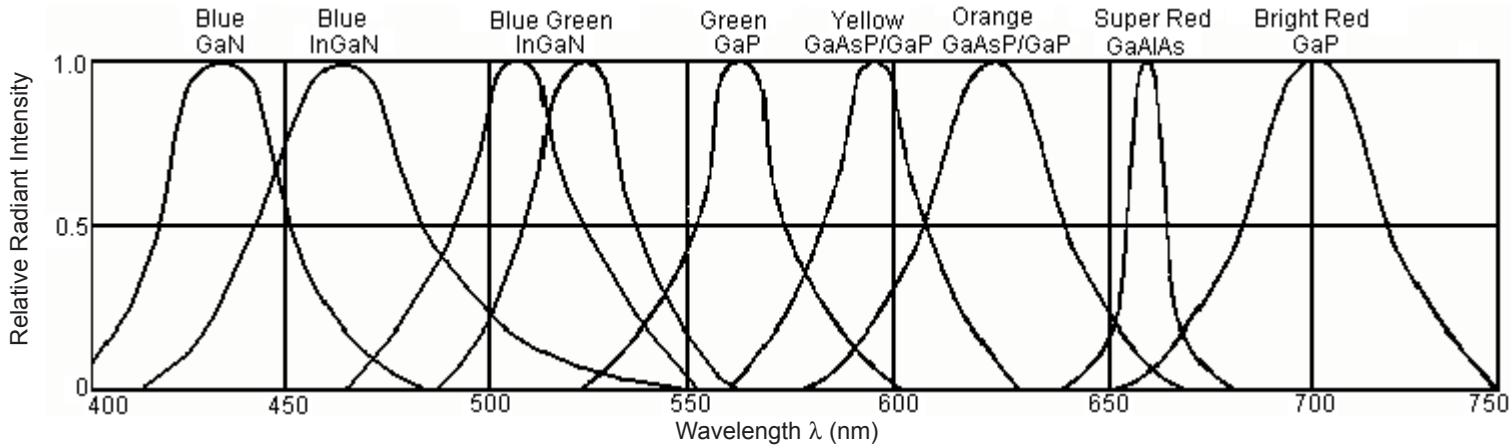
Super Red (GaAlAs) $\lambda P = 660nm$



Luminous Intensity vs. Forward Current



Luminous Intensity vs. Ambient Temperature



Relative Intensity vs. Wavelength

This data sheet and its contents (the "Information") belong to the Premier Farnell Group (the "Group") or are licensed to it. No licence is granted for the use of it other than for information purposes in connection with the products to which it relates. No licence of any intellectual property rights is granted. The Information is subject to change without notice and replaces all data sheets previously supplied. The Information supplied is believed to be accurate but the Group assumes no responsibility for its accuracy or completeness, any error in or omission from it or for any use made of it. Users of this data sheet should check for themselves the Information and the suitability of the products for their purpose and not make any assumptions based on information included or omitted. Liability for loss or damage resulting from any reliance on the Information or use of it (including liability resulting from negligence or where the Group was aware of the possibility of such loss or damage arising) is excluded. This will not operate to limit or restrict the Group's liability for death or personal injury resulting from its negligence. SPC MULTICOMP is the registered trademark of the Group. © Premier Farnell plc 2008.

TOLERANCES:

UNLESS OTHERWISE SPECIFIED, DIMENSIONS ARE FOR REFERENCE PURPOSES ONLY.

| | |
|--------------|----------|
| DRAWN BY: | DATE: |
| Geetha | 28/05/08 |
| CHECKED BY: | DATE: |
| Suresh | 28/05/08 |
| APPROVED BY: | DATE: |
| G.Cook | 12/06/08 |

DRAWING TITLE:

0603 SMD LED - Super Red

| | | | |
|------------|------------|-----------------|-----|
| SIZE | DWG NO. | ELECTRONIC FILE | REV |
| A | M10001148 | L-S290SRC_DWG | A |
| SCALE: NTS | U.O.M.: mm | SHEET: 3 OF 4 | |



PART NO.

MCL-S290SRC

REVISIONS

| ECN # | REV | DESCRIPTION | DRAWN | DATE | CHECKD | DATE | APPRVD | DATE |
|-------|-----|-------------|--------|---------|--------|---------|--------|---------|
| - | A | RELEASED | Geetha | 28/5/08 | Suresh | 28/5/08 | G. C | 12/6/08 |
| | | | | | | | | |

Part Number Table

| Description | Part Number |
|---------------------------|-------------|
| LED, SMD, 0603, Super-Red | MCL-S290SRC |

<http://www.farnell.com>

<http://www.newark.com>

<http://www.cpc.co.uk>

This data sheet and its contents (the "Information") belong to the Premier Farnell Group (the "Group") or are licensed to it. No licence is granted for the use of it other than for information purposes in connection with the products to which it relates. No licence of any intellectual property rights is granted. The Information is subject to change without notice and replaces all data sheets previously supplied. The Information supplied is believed to be accurate but the Group assumes no responsibility for its accuracy or completeness, any error in or omission from it or for any use made of it. Users of this data sheet should check for themselves the Information and the suitability of the products for their purpose and not make any assumptions based on information included or omitted. Liability for loss or damage resulting from any reliance on the Information or use of it (including liability resulting from negligence or where the Group was aware of the possibility of such loss or damage arising) is excluded. This will not operate to limit or restrict the Group's liability for death or personal injury resulting from its negligence. SPC MULTICOMP is the registered trademark of the Group. © Premier Farnell plc 2008.

TOLERANCES:

UNLESS OTHERWISE SPECIFIED, DIMENSIONS ARE FOR REFERENCE PURPOSES ONLY.

DRAWN BY:

Geetha

CHECKED BY:

Suresh

APPROVED BY:

G.Cook

DATE:

28/05/08

DATE:

28/05/08

DATE:

12/06/08

DRAWING TITLE:

0603 SMD LED - Super Red

SIZE
A

DWG NO.

M10001148

SCALE: NTS

U.O.M.: mm

ELECTRONIC FILE
L-S290SRC_DWG

REV
A

SHEET: 4 OF 4