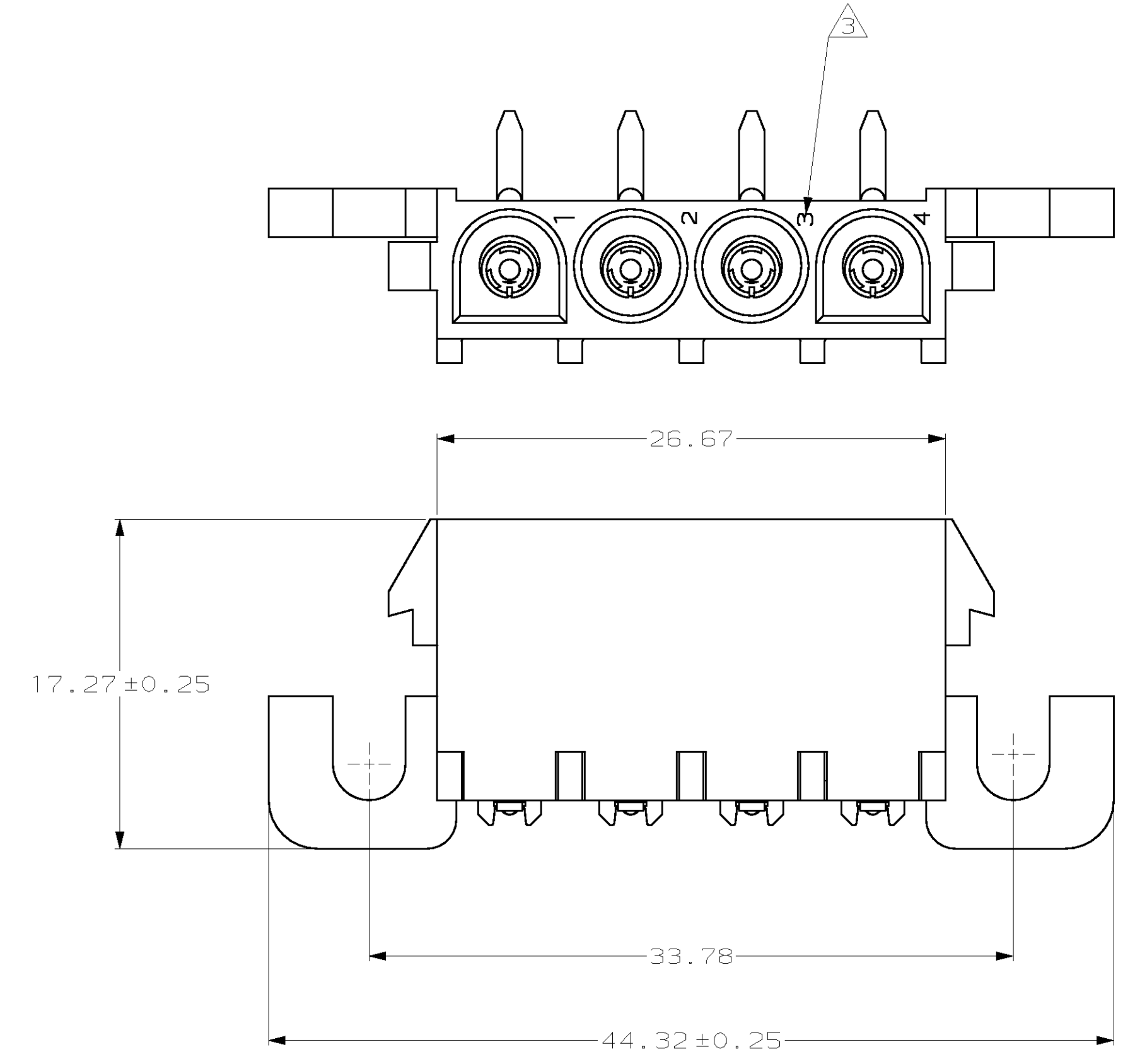
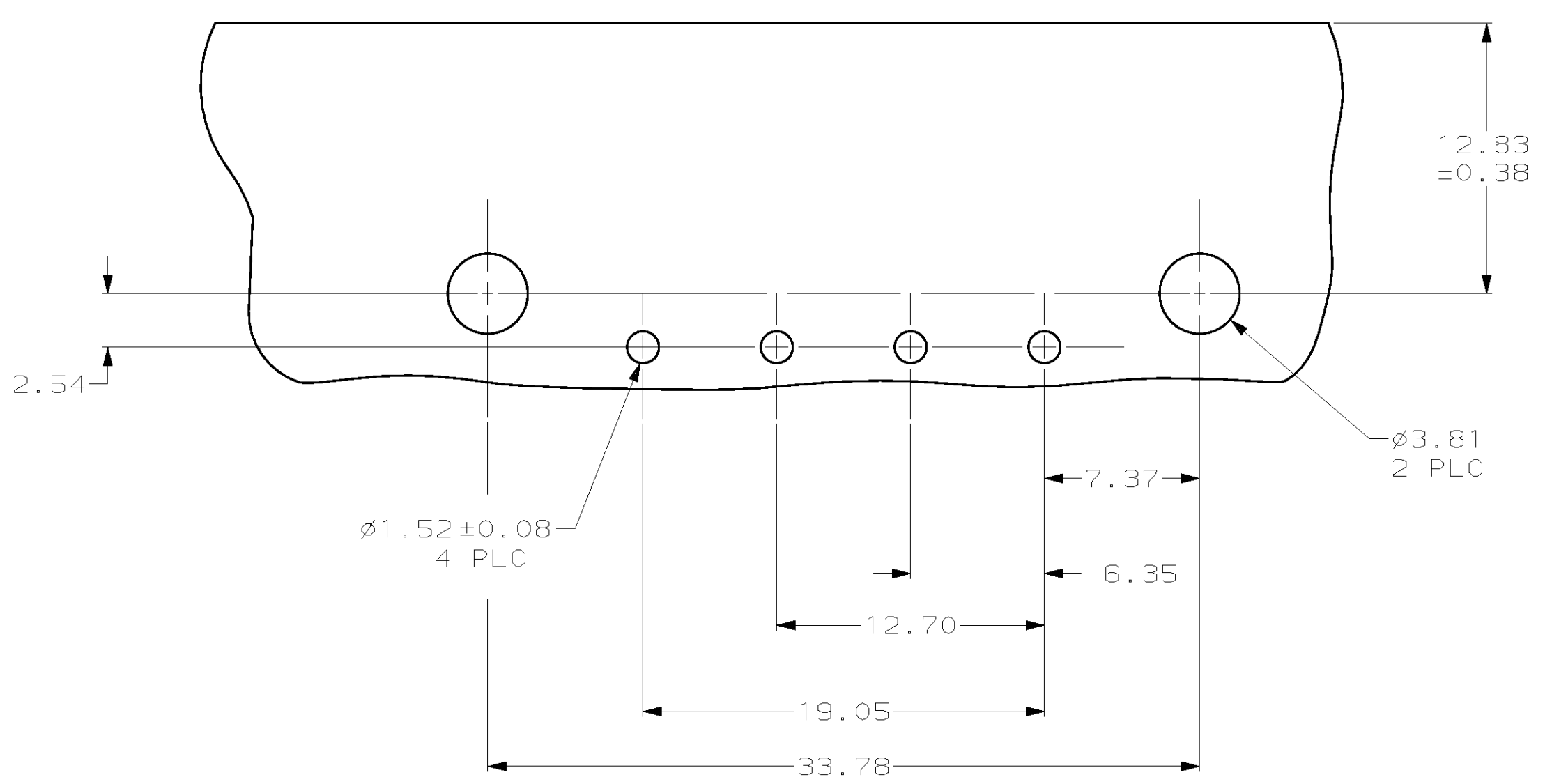
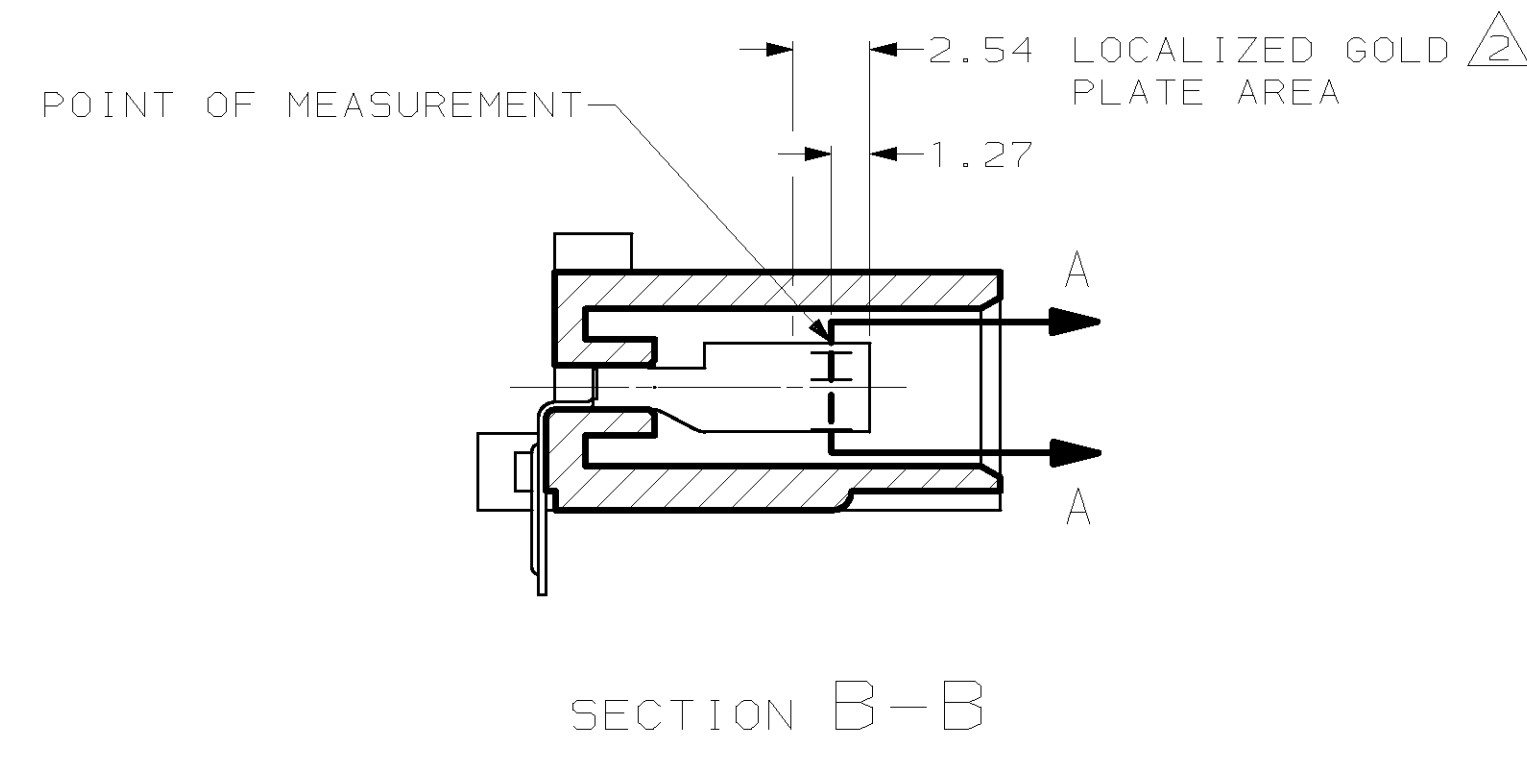
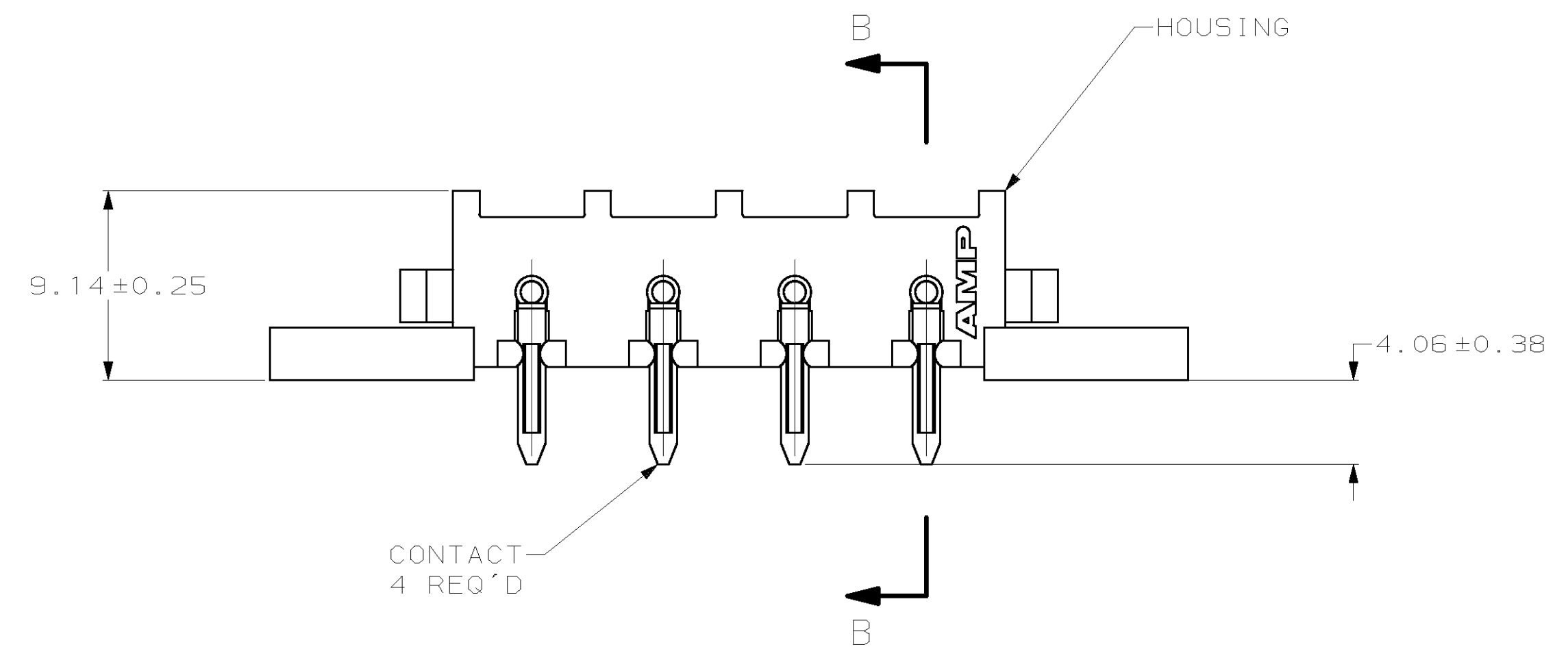


LOC	QTY	REV	DATE	BY	CHK	APPV
CM	53	D	6-23-98	REV PER EC	061B-0127-98	BL RS



- PARTS COMPLY WITH AMP SOLDERABILITY SPECIFICATION 109-11-5.
- 0.00076 GOLD OVER 0.00127 MIN NICKEL WITH MATTE TIN ON SOLDER TAIL.
- CIRCUIT IDENTIFICATION CHARACTERS ARE ADJACENT TO THE INDICATED CAVITIES, BUT LOCATION AND ORIENTATION MAY DIFFER FROM PRINT.



MM	IN	MM	IN
3.81	.150		
2.54	.100		
2.03	.080	44.32	1.745
1.91	.075	33.78	1.330
1.57	.062	26.67	1.050
1.52	.060	19.05	.750
1.27	.050	17.27	.680
0.38	.015	12.83	.505
0.25	.010	12.70	.500
0.13	.005	9.14	.360
0.08	.003	7.37	.290
0.00127	.000050	6.35	.250
0.00076	.000030	4.06	.160
MM	IN	MM	IN

RECOMMENDED MOUNTING HOLE PATTERN FOR 1.57 THICK P.C. BOARD



PH BRZ, $\Delta$	NYLON UL 94V-0	643230-2
PH BRZ, TIN	NYLON UL 94V-0	643230-1
CONTACT	HOUSING	PART NUMBER

DIMENSIONS: SEE TABLE TOLERANCES UNLESS OTHERWISE SPECIFIED: 0 PLC ± .013 1 PLC ± .013 2 PLC ± .013 3 PLC ± .013 4 PLC ± .013 ANGLES ± .1°		AMP INCORPORATED HARRISBURG, PA 17105-3608 SOCKET HEADER ASSEMBLY, RIGHT ANGLE MOUNT, 4 POSITION, UNIVERSAL MATE-N-LOK™
MATERIAL: SEE TABLE FINISH: SEE TABLE	CUSTOMER DRAWING SCALE: 4:1 SHEET: 1 OF 1 REV: 0	AMP AMP INCORPORATED HARRISBURG, PA 17105-3608 SOCKET HEADER ASSEMBLY, RIGHT ANGLE MOUNT, 4 POSITION, UNIVERSAL MATE-N-LOK™ SIZE: A1 CAGE CODE: 00779 DRAWING NO: C-643230