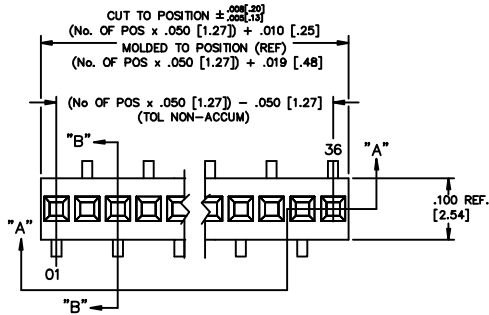


REVISION AB

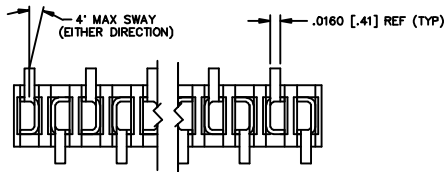
DO NOT SCALE FROM THIS PRINT



SECT: "A-A"

SECT: "B-B"

FIG. 1



"R" = USE MEASURED DIMENSION (REF)
 "S" = {("R" - .138 [3.50]) / 2} ±.020 [.51]

FIG. 3

-K: POLYAMIDE FILM PAD
 AVAILABLE ON POS 7 - 36 ONLY

PROPRIETARY NOTE
 THE DESIGN AND CONSTRUCTION OF THIS PRODUCT IS THE PROPERTY OF SAMTEC CORPORATION. IT IS NOT TO BE REPRODUCED OR TRANSMITTED IN ANY FORM OR BY ANY MEANS, ELECTRONIC OR MECHANICAL, INCLUDING PHOTOCOPYING, RECORDING, OR BY ANY INFORMATION STORAGE AND RETRIEVAL SYSTEM, WITHOUT THE WRITTEN PERMISSION OF SAMTEC CORP.

RSM-1XX-XX-XXX-S-X
BODY LENGTH SPECIFICATION
 -02 THRU -36 POSITIONS
 (SEE NOTE 2)

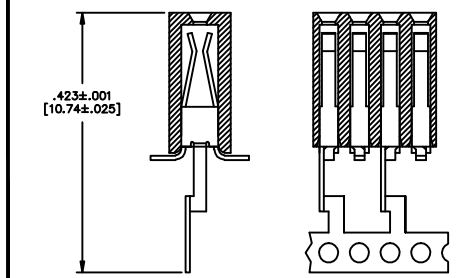
- LEAD STYLE**
 -02: C-64-02-X
- PLATING SPECIFICATIONS**
- S: SELECTIVE GOLD (USE C-64-02-S-X)
 - P: FLASHED GOLD PALLADIUM NICKEL (USE C-64-02-P-X)
 - F: FLASH GOLD (USE C-64-02-F-X)
 - L: LIGHT SELECTIVE GOLD (USE C-64-02-L-X)
 - T: TIN (USE C-64-02-T-X)
 - STL: SELECTIVE TIN LEAD (USE C-64-02-STL-X)
 - TM: MATTE TIN (USE C-64-02-T-X)
 - SM: HEAVY SELECTIVE GOLD, MATTE TIN TAIL (USE C-64-02-S-X)
 - LM: LIGHT SELECTIVE GOLD, MATTE TIN TAIL (USE C-64-02-L-X)
 - FM: FLASH SELECTIVE GOLD, MATTE TIN TAIL (USE C-64-02-F-X)

DIMENSIONS ARE IN INCHES UNLESS OTHERWISE NOTED		TOLERANCES ARE:		TITLE:	DWG NO:
ONE PLACE DECIMALS: ±.1	THREE PLACE DECIMALS: ±.005	ANGLES	±5°	RECEPTACLE SURFACE MOUNT (SINGLE ROW)	RSM-1XX-XX-XXX-S-X
TWO PLACE DECIMALS: ±.01	FOUR PLACE DECIMALS: ±.0020				SHEET 1 OF 1

- OPTIONS**
- P: PICK AND PLACE PAD (USE PPP-20)(SEE FIG. 2) (AVAILABLE ON POS. 6 THRU 36 ONLY)
 - K: POLYAMIDE FILM PAD (AVAILABLE ON POS. 7 THRU 36 ONLY) (.005 [.13] THICKNESS WITH SILICONE ADHESIVE)(SEE FIG 3)
 - TR: TAPE AND REEL (USE K-500-300)
- BODY SPECIFICATION**
- S: SINGLE ROW (USE RSM-XX-S)

- NOTES:**
1. PIN ONE TO BE IN DIRECTION OF ARROW ON TUBE
 2. FOR ODD POSITIONS, LOSE ONE PIN PER CUT FOR EVEN POSITIONS, LOSE TWO PINS PER CUT
 3. MEASURED AT BEND RADIUS
 4. MINIMUM RETENTION: 1.0 LB.
 5. CUT FLASH TO BE .010" MAX WITH NO FLASH ALLOW IN HOLES OR EXTENDING BELOW LEADS.
 6. CONTACTS NOT TO BE INTERLEAVED.
 7. (C) REPRESENTS A CRITICAL DIMENSION.

OPTION	TUBE	PLUG
-P	PT-1-24-01-14	TP-03
-	PT-1-24-03-64	TP-24 [2]
-K	PT-1-24-03-64	TP-24 [2]



IN-PROCESS VIEW

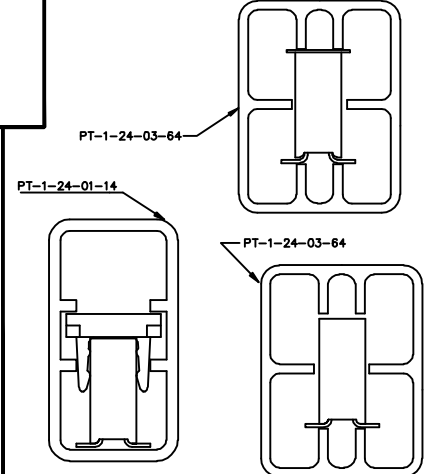
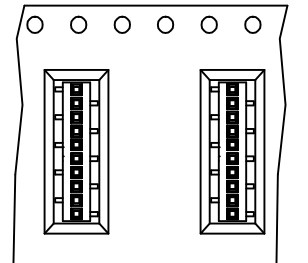


FIG. 2

"R" = USE MEASURED DIMENSION (REF)
 "T" = {("R" - .300)/2} ±.020

-P: PICK AND PLACE PAD
 AVAILABLE ON POS 6 - 36 ONLY



USER DIRECTION OF UNREELING ———
 POCKET NOT DETAILED
 FIG. 4
 -TR: TAPE AND REEL

EXPRESS ASSEMBLY
samtec
 520 PARK EAST BLVD. NEW ALBANY, INDIANA 47150
 PHONE (812) 944-8733 P.O. BOX 1147
 CODE 58322
 MADE BY: CHES REIMGER 11-24-82
 DESIGNED BY: RSM-1XX-XX-XXX-S-X
 SHEET 1 OF 1