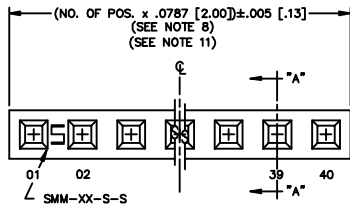
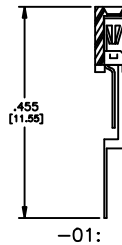


REVISION AV

DO NOT SCALE FROM THIS PRINT



IN PROCESS

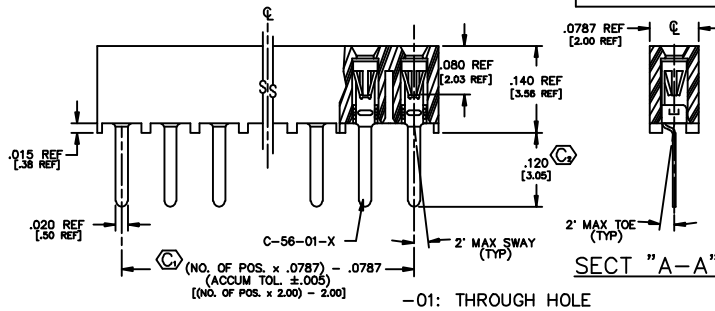


NOTES:

1. RETENTION FORCE IN BODY TO BE: 1 lbs. MIN
2. INSERTION FORCE TO BE: 3.0 oz. MAX.
3. WITHDRAWAL FORCE TO BE: 0.4 oz. MIN.
4. Ⓢ REPRESENTS CRITICAL DIMS. FOR STATISTICAL PROCESS CONTROL.
5. [] DIMS ARE IN METRIC AND ARE NOT CONTROLLING DIMS.
6. SMM-105-01-X THRU SMM-140-01-X MUST USE PT-1-24-01-12.
7. "-LC" OPTION FOR A 02 POSITION WILL HAVE ONLY ONE LOCKING CLIP (LC-05-T).
8. "END WALLS" AFTER CUTTING SHOULD BE .017±.005.
- 9.) ALL OPTIONS: PACKAGE POSITIONS -04 THRU -40 IN TUBES. LAYER PACKAGE POSITIONS -02 & -03 WITH NO OPTIONS.
- 10.) -02 THRU -05 POSITION WITH -K OR -P TO BE PACKAGED IN -TR ONLY. -06 THRU -40 POSITION AVAILABLE IN TUBE OR -TR PACKAGING.
- 11.) MAX CUT FLASH: .010 [.25]

TUBE PACKAGING TABLE

LEAD STYLE	TUBE	PLUG
-01	PT-1-24-01-12	TP-12
-01-P	PT-1-24-02-29	TP-24
-02		
-02-K, -02-LC, -02-LC-K	PT-SMM002-S-K	TP-24-02
-02-P	PT-SMM001-S-P	TP-24



* PINS INTERLEAVED AND ORIENTED SAME DIRECTION FOR -01 ONLY

UNLESS OTHERWISE NOTED TOLERANCES ARE:

DIMENSIONS ARE IN INCHES

ONE PLACE DECIMALS: ±.1
TWO PLACE DECIMALS: ±.01

THREE PLACE DECIMALS: ±.005
FOUR PLACE DECIMALS: ±.0020

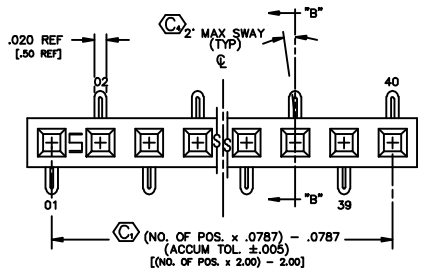
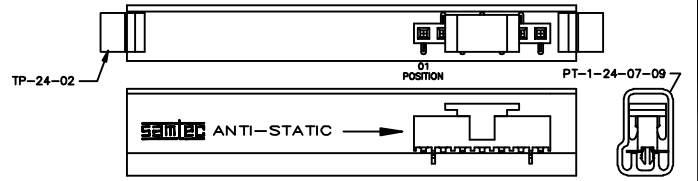
ANGLES ± 1°

TITLE: 2 mm SOCKET STRIP (SINGLE ROW)

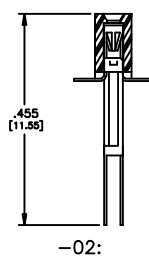
DWG NO: SMM-1XX-XX-XX-S-XX-X-XX-XX

SHEET 1 OF 1

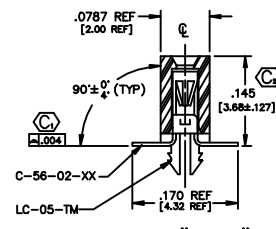
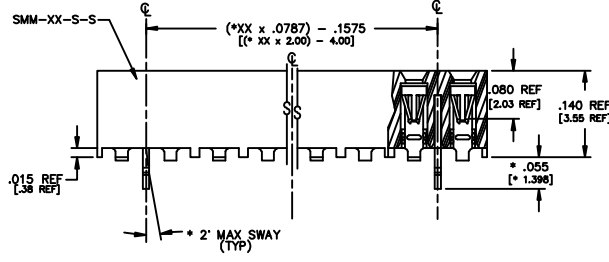
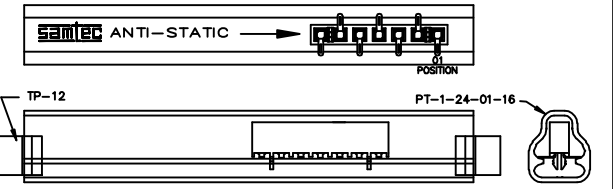
- SMM-1XX-XX-XX-S-XX-X-XX-XX
- NO. OF POS. PER ROW
THROUGH HOLE -01 THRU -40
SURFACE MOUNT -02 THRU -40
- LEAD STYLE
-01: THROUGH HOLE (C-56-01-X)
-02: SURFACE MOUNT (C-56-02-X)
- PLATING OPTION
-S: SELECTIVE, MATTE TIN TAIL (USE C-56-XX-S)
-P: FLASH GOLD, MATTE TIN TAIL (USE C-56-XX-P)
-K: POLYIMIDE FILM PAD (.005 [.13] THICKNESS WITH SILICONE ADHESIVE) [2 POS MIN, SEE NOTE 10]
-LC: LOCKING CLIP USE 2 LC-05-TM (AVAILABLE ONLY WITH LEAD STYLE -02. SEE * DIMS) (SEE NOTES 7 & 12)
-S: SINGLE ROW (USE SMM-XX-S-S)
- PICK & PLACE PAD (USE PPP-09)
- POLARIZING OPTION INDICATE POSITION (USE PK-07-H)
- TR: TAPE & REEL MAX. POSITIONS AVAILABLE: 27 VERTICAL / 28 HORIZONTAL



IN PROCESS

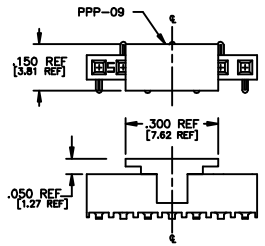


PACKAGE PARTS IN TUBE AS SHOWN
(POSITION PARTS WITH POS. -01 TOWARD ARROW AS SHOWN)



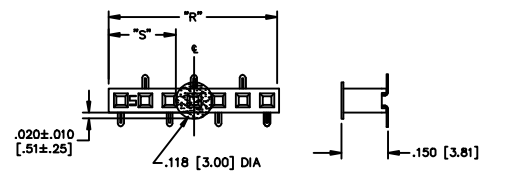
SECT "B-B"

-02: SURFACE MOUNT



-P: PICK AND PLACE PAD
(PLACE PPP-09 ABOUT C.L. AS SHOWN)

-K: POLYIMIDE FILM PAD
[2 POSITION MINIMUM, SEE NOTE 10]



NOTE: "R" = USED MEASURED DIMENSION (REF)
"S" = [("R" - .118 [3.0]) / 2] ± .020 [.51]

1/2 SCALE

PROPRIETARY NOTE
THIS DRAWING AND DATA ARE THE PROPERTY OF SAMTEC AND ARE NOT TO BE REPRODUCED OR TRANSMITTED IN ANY FORM OR BY ANY MEANS, ELECTRONIC OR MECHANICAL, INCLUDING PHOTOCOPYING, RECORDING, OR BY ANY INFORMATION STORAGE AND RETRIEVAL SYSTEM, WITHOUT THE WRITTEN PERMISSION OF SAMTEC INC.

W5C W10 SMM-XX-S

samtec

520 PARK EAST BLVD. NEW ALBANY, INDIANA 47150
PHONE (812) 944-8733 P.O. BOX 1147
CODE 55322

MATT KOLB S-22-SI
CHECKED BY: McCARTIN

DATE: 10/10/00

SMM-1XX-XX-XX-S-XX-X-XX-XX

SHEET 1 OF 1