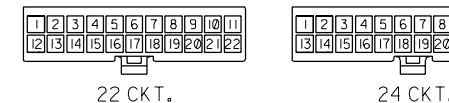
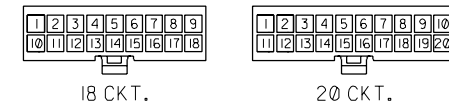
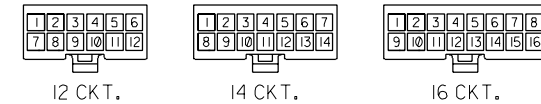
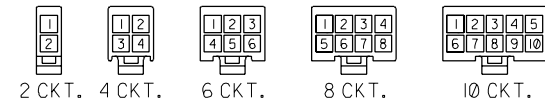
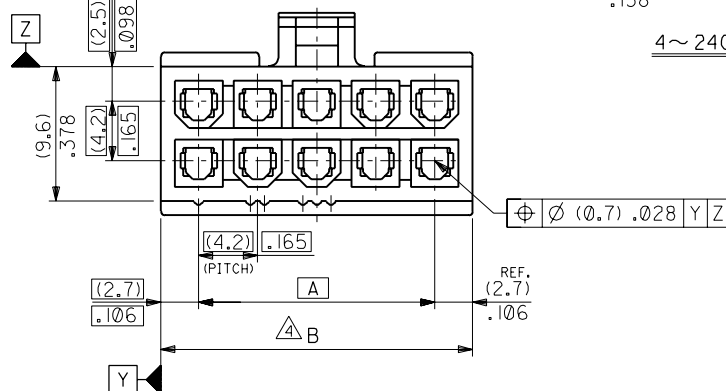
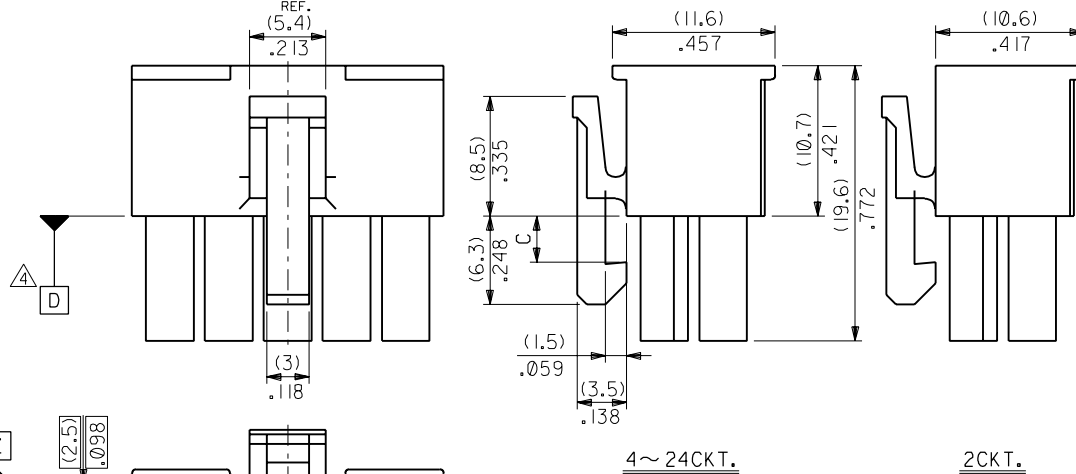
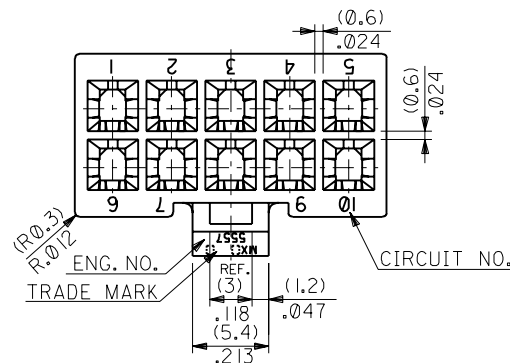


NOTES

1. TERMINAL : 5556 SERIES
2. MATE WITH : 5559 SERIES
5566 SERIES
5569 SERIES
3. (METRIC) VALUES SHOWN GOVERN OVER ENGLISH CONVERSION VALUES.
 ▲ TO BE MEASURED AT POSITION OF D SURFACE.



CIRCUIT SIZE LAYOUT
 (SCALE: 1-1)



	C	B	A	EDP. NO.	ENG. NO.	NO. OF CKTS.
(3,6)	(51.6) 2.031 (47.4) 1.866 (43.2) 1.701 (39) 1.535	(46.2) 1.819 (42) 1.654 (37.8) 1.488 (33.6) 1.323	39-01-2245 -2225 -2205 -2185	5557-24R-210 -22R-210 -20R-210 -18R-210	24 22 20 18	
(3,3)	(34.8) 1.37 (30.6) 1.205 (26.4) 1.039 (22.2) .874 (18) .709 (13.8) .543 (9.6) .378 (5.4) .213	(29.4) 1.158 (25.2) .992 (21) .827 (16.8) .661 (12.6) .496 (8.4) .331 (4.2) .165	-2165 -2145 -2125 -2105 -2085 -2065 -2045	-16R-210 -14R-210 -12R-210 -10R-210 -08R-210 -06R-210 -04R-210	16 14 12 10 8 6 4	
			39-01-2025	5557-02R-210	2	

材料 MATERIAL 66NYLON (UL94V-0)	モレックス MOLEX-JAPAN CO.,LTD. 日本モレックス株式会社
F REVISED (JC70586) S.A. M.F. '91/1/8	仕上げ FINISH ————
E REVISED (J20158) H.H. '92/4/20	適用電線範囲 WIRE RANGE ————
D REVISED (J01160) H.H. Y.Y. '90/11/8	被覆外径 INS. RANGE ————
C REVISED & REDRAWN (J00192) S.M. H.H. '90/2/22	DRAWN BY '90/2/22 CHK'D BY '97/01/08 S.MOCHIZUKI M.FUKUSHIMA
記号 LTR 変更内容 REVISION RECORD DR. CHK. 日付 DATE	APP'D BY '97/01/08 尺度 SCALE 3 - 1 M.FUKUSHIMA
一般公差 GENERAL TOLERANCES	REVISE ONLY ON CAD SYSTEM