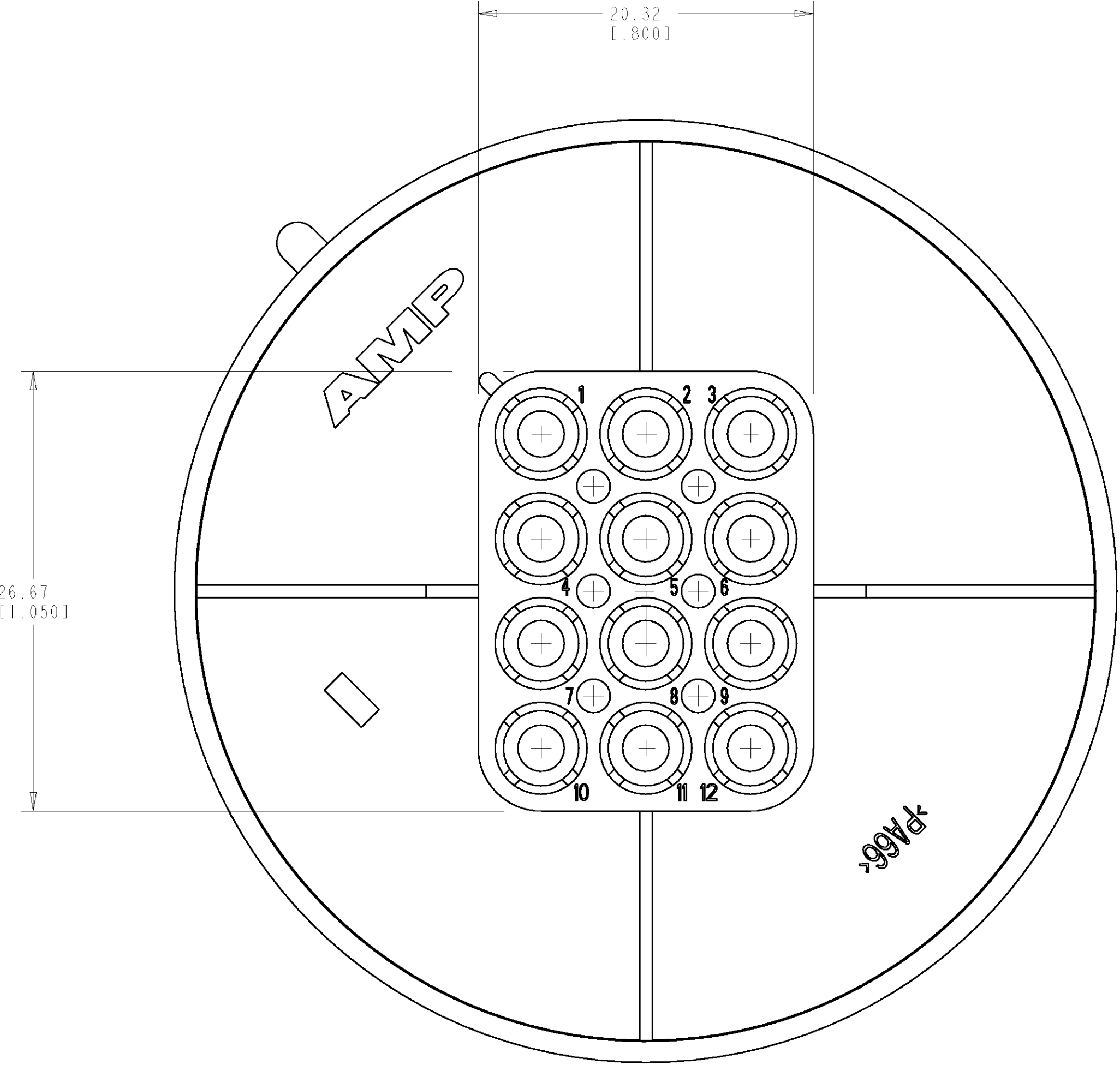
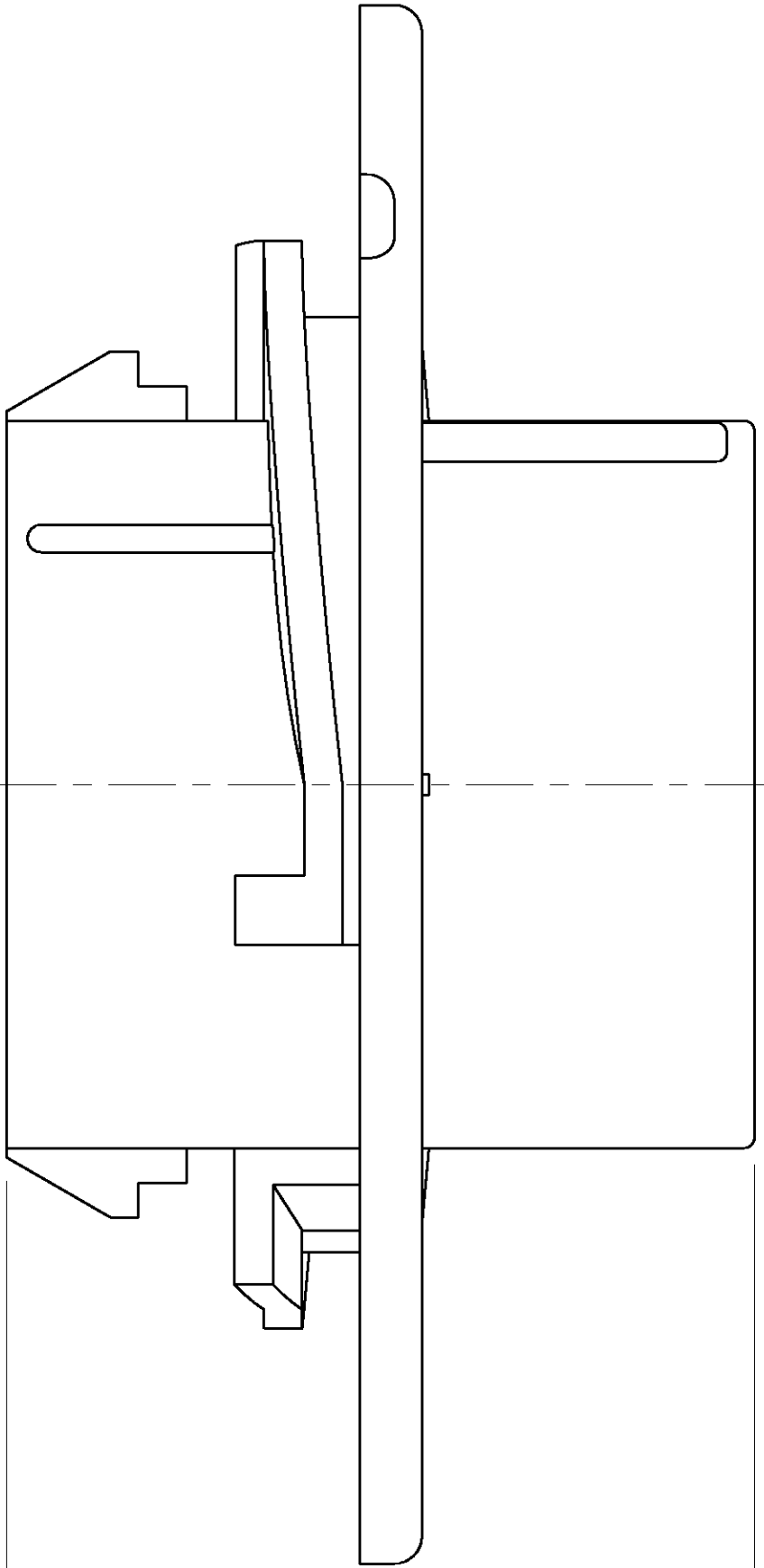
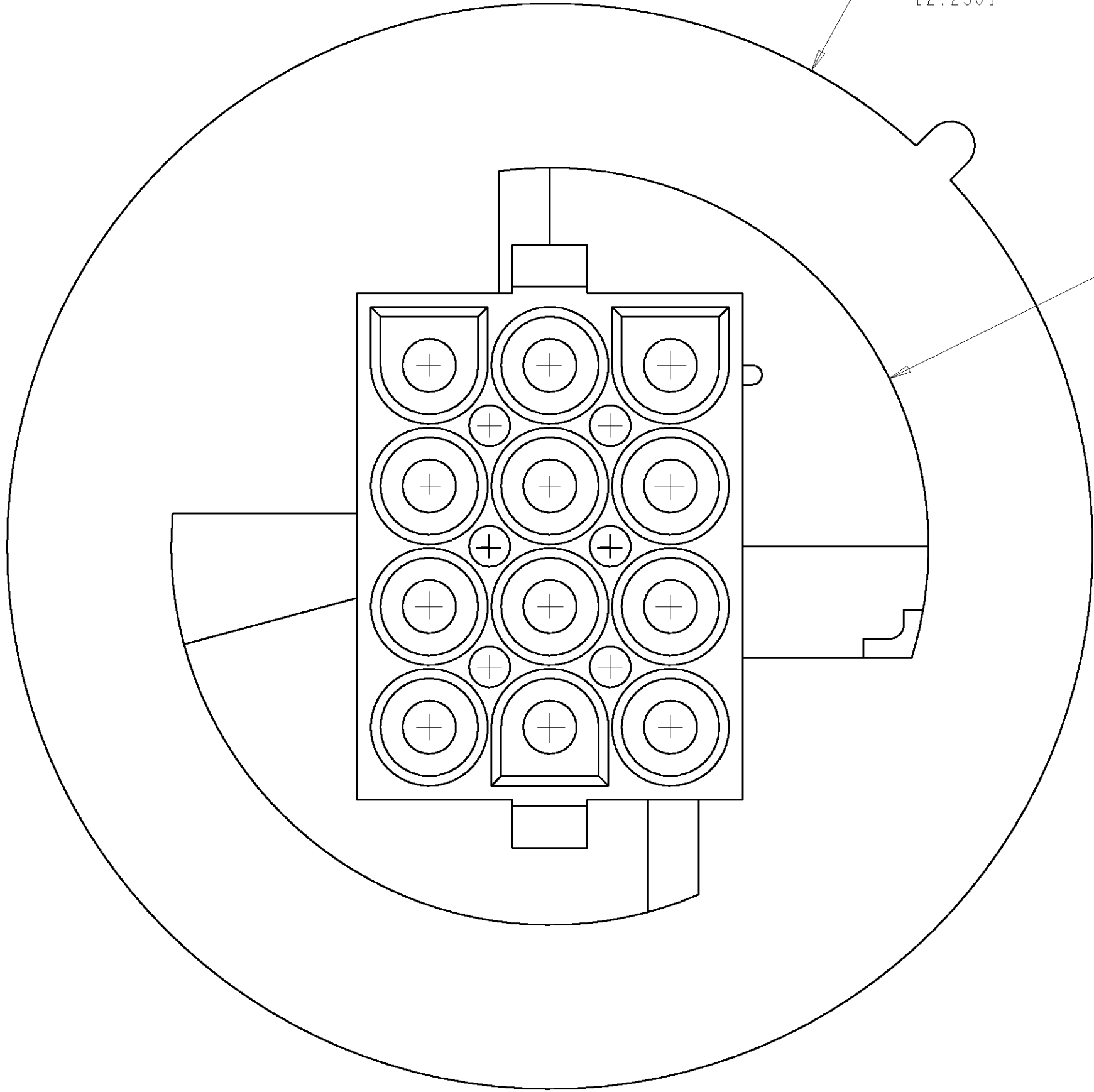
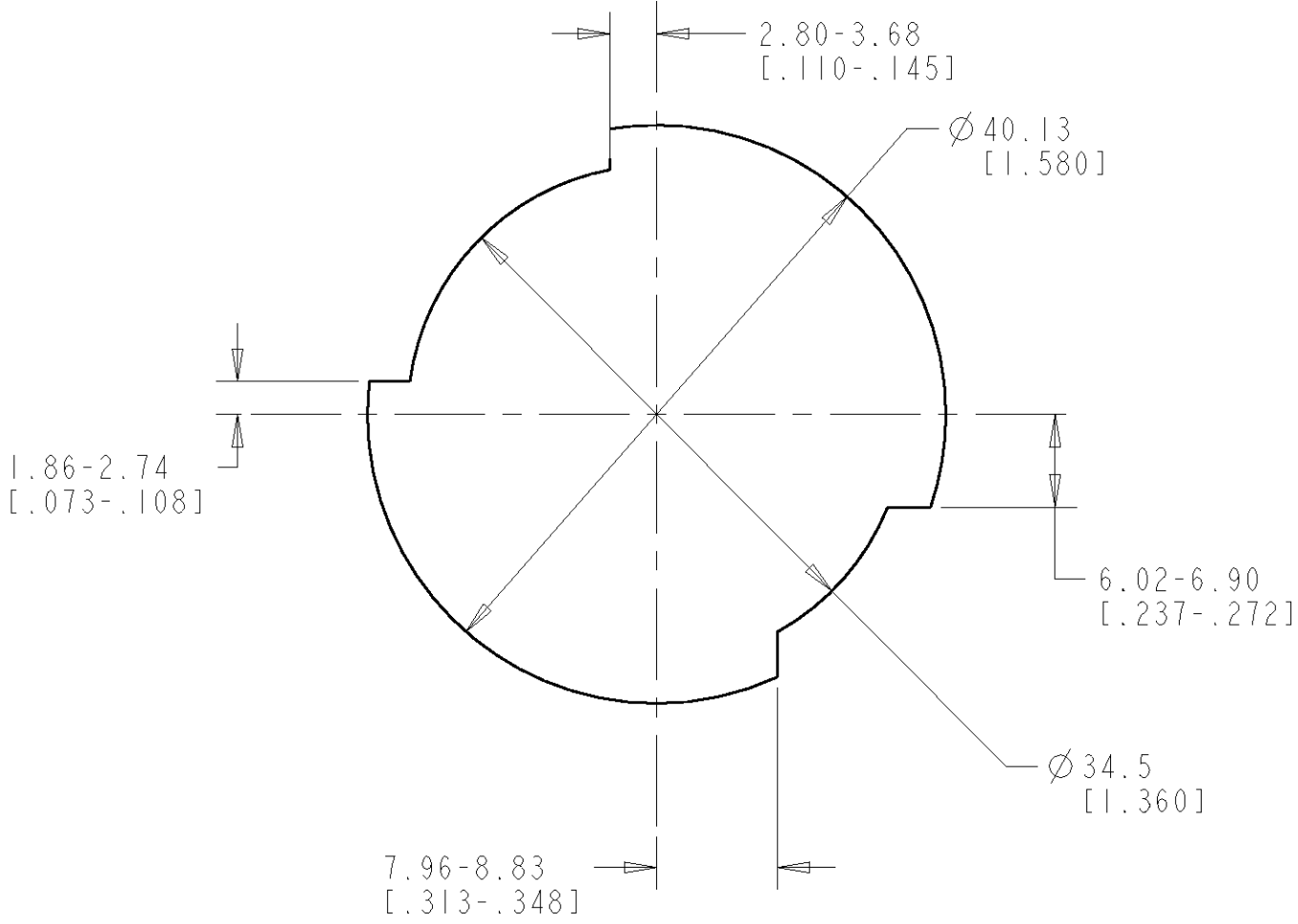
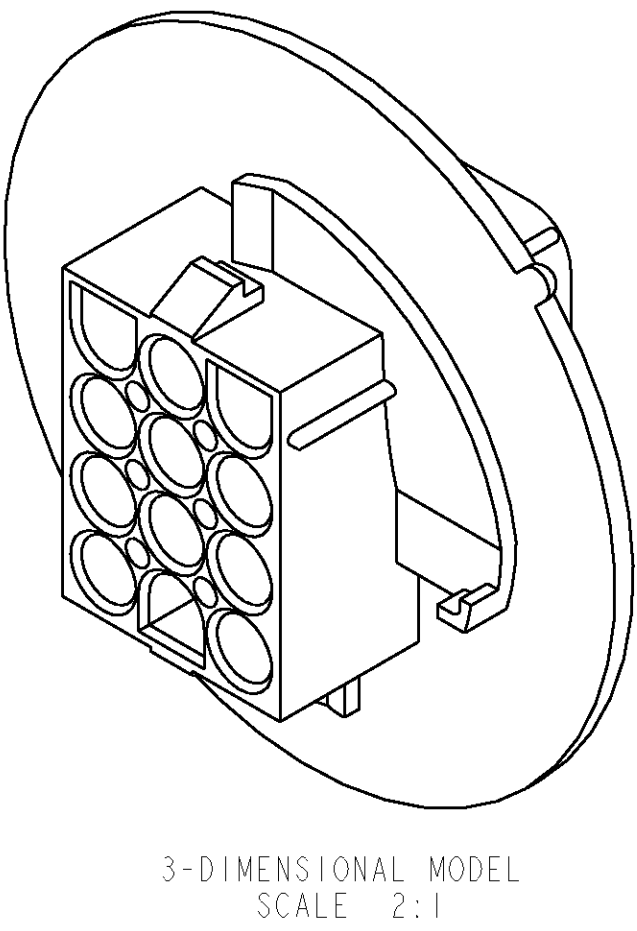
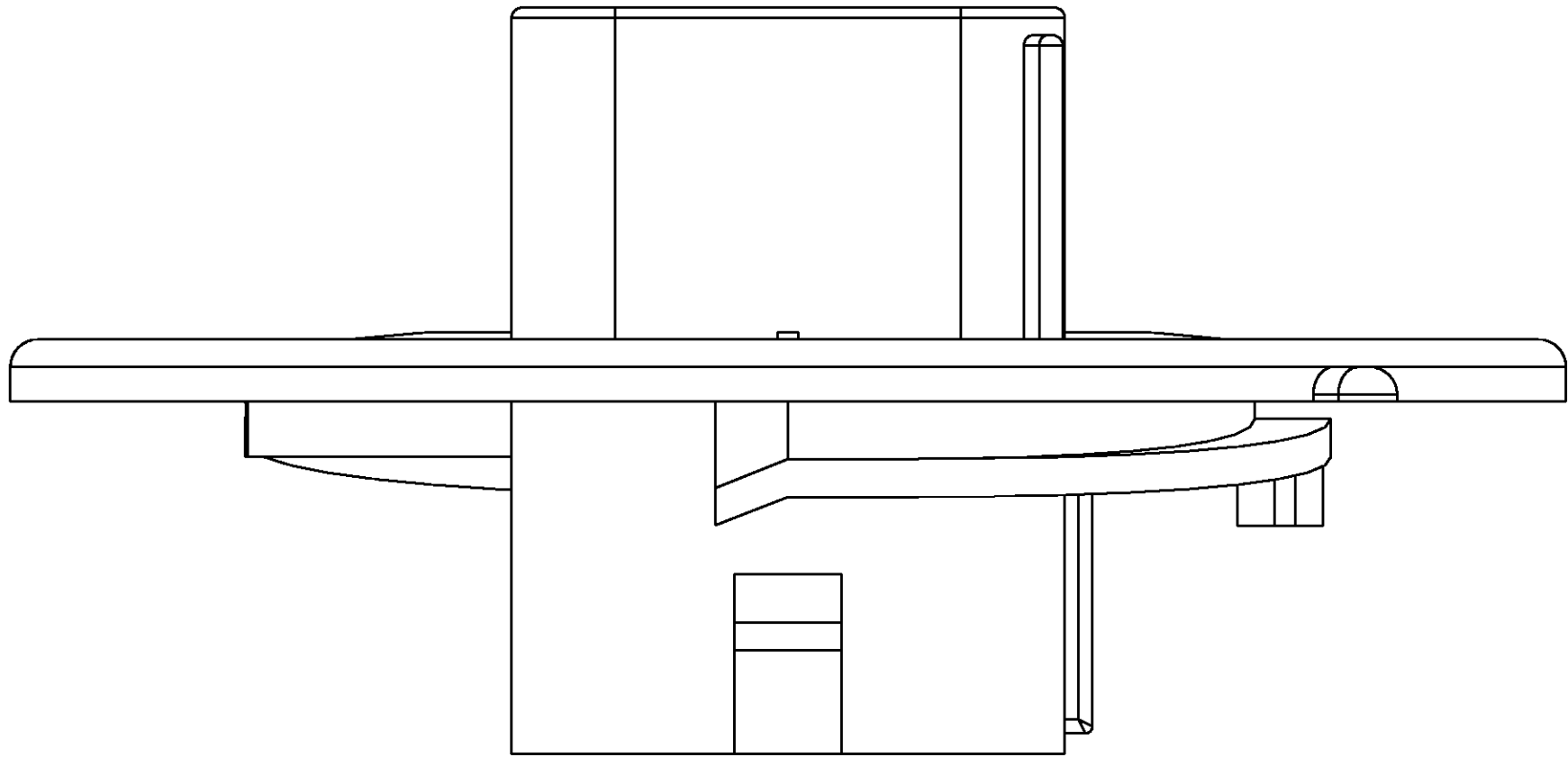


LOC		DIST		REVISONS			
CM	00	P	LTR	DESCRIPTION		DATE	APVD
		H		REVISED PER 0638-0116-04		06-FEB-04	SR

1. MATES WITH APPROPRIATE UNIVERSAL MATE-N-LOK™ PLUG.
2. RECOMMENDED PANEL THICKNESS 0.76 - 2.29 [.030 - .090].
3. PANEL MUST BE PUNCHED SO THAT THE HOUSING ENTERS THE PANEL IN THE SAME DIRECTION AS THE PUNCH.
4. DIMENSIONS INDICATED ARE AS MOLDED. ADDITIONAL GROWTH DUE TO SUBSEQUENT MOISTURE ABSORPTION MAY OCCUR.



PRELIMINARY	RED	794716-3
	NATURAL	794716-1
	COLOR	PART NUMBER

DIMENSIONS: mm [INCHES]		TOLERANCES UNLESS OTHERWISE SPECIFIED:		DWN R. WHITAKER CHK M. TRULL APVD M. TRULL		08-OCT-1999 08-OCT-1999 08-OCT-1999		AMP Incorporated Harrisburg, PA 17105-3608	
9 PLC 2 PLC 3 PLC 4 PLC		± ±0.13(.005) ± ±		PRODUCT SPEC		NAME		CAP. 12 CIRCUIT UNIVERSAL MATE-N-LOK™, SPECIAL	
MATERIAL NYLON UL 94V-2		FINISH		APPLICATION SPEC		SIZE CASE CODE DRAWING NO		RESTRICTED TO	
				WEIGHT		A 00779 C-794716		SHEET 1 OF 1	
				CUSTOMER DRAWING		SCALE 4:1		REV H	

METRIC