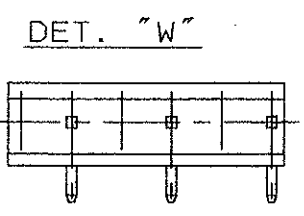


N° POS.	POS. MANCANTI RIF. A DET. UNLOADED POS. REF. TO DETAIL	DIM. "A"	DIM. "B"	DIM. "C"	P.N. STAGNATO (TIN PLTD. VERSION)	DORATO 0.37µm AREA CONTATTO STAGNATO NELLA ZONA A SALDARE	DORATO 0.76µm AREA CONTATTO STAGNATO NELLA ZONA A SALDARE	DORATO 1.27µm AREA CONTATTO STAGNATO NELLA ZONA A SALDARE
12	-	45.9	43.59	21.4	280620-1	280620-2	280620-4	280620-3
10	-	37.9	35.66	17.5	280619-1	280619-2	280619-4	280619-3
8	-	30.0	27.74	13.5	280618-1	280618-2	280618-4	280618-3
6	DET. "W"	22.1	15.85	9.5	282468-1	-	-	-
6	-	22.1	19.81	9.5	280617-1	280617-2	280617-4	280617-3
4	-	14.2	11.89	5.6	280616-1	280616-2	280616-4	280616-3
2	-	6.2	3.96	1.6	280615-1	280615-2	280615-4	280615-3
						0.37µm GOLD PLTD ON CONTACT AREA TIN PLTD ON SOLDER TAIL	0.76µm GOLD PLTD ON CONTACT AREA TIN PLTD ON SOLDER TAIL	1.27µm GOLD PLTD ON CONTACT AREA TIN PLTD ON SOLDER TAIL

DET. VIEWS FROM "D"



- ① EVENTUALE POSIZIONE DEI CONTATTI MANCANTI, VEDERE DETTAGLI ( POSITIONS OF UNLOADED CONTACTS , SEE DETAILS)
- ② TOLLERANZA NON CUMULATIVA (NOT CUMULATIVE TOLERANCE)
- ③ ALLA BASE (AT BASE)
- ④ DIMENSIONE MISURATA ALLA BASE DEI POSTS (POSTS BASE DIMENSION)
- ⑤ NOT IN PRODUCTION
- ⑥ P/N OBSOLETO (OBSOLETE P/N)
- ⚠ PER VERSIONI CARICATE PARZIALMENTE LA DIMENSIONE "B" E' MISURATA TRA IL PRIMO E L'ULTIMO CONTATTO DISPONIBILE ( FOR PARTIALLY LOADED VERSION , DIM "B" IS MEASURED BETWEEN FIRST AND LAST AVAILABLE CONTACT )

**CONTATTI:** BRONZO PER VERSIONE STAGNATA (CONTACTS) (PH BRONZE FOR TIN PLTD. VERSION ONLY)  
 OTTONE PER LA VERSIONE DORATA (BRASS FOR GOLD PLTD VERSION.)

**BLOCCETTO:** POLICARBONATO CARICATO VETRO COLORE VERDE (HOUSING) POLYCARBONATE GLAS FIBER FILLED COLOUR GREEN

**MATERIALE (MATERIAL)**

**CUSTOMER DRAWING FOR REFERENCE ONLY**      **DISEGNO PER CLIENTE SOLO PER RIFERIMENTO**

THIS DRAWING IS UNPUBLISHED      RELEASE FOR PUBLICATION      19

© COPYRIGHT 19 BY AMP INCORPORATED, HARRISBURG, PA. ALL INTERNATIONAL RIGHT RESERVED. AMP PRODUCTS MAY BE COVERED BY U.S. AND FOREIGN PATENT AND/OR PATENT PENDING.

TOLLERANZE, SE NON DIVERSAMENTE SPECIFICATO (TOLERANCES, UNLESS OTHERWISE SPECIFIED)

DIAM. ISOLANTE (INS. DIA. RANGE)      RANGO FILO (WIRE RANGE)      SCALA (SCALE)

± 0.4

ANGOLI (ANGLES)      ± 2°

DIS. (DR.)      27-09-1991      DESCRIZIONE (DESCRIPTION)

C. CORDOLA      AMP-MODU MOD. I RIGHT ANGLE POST SUPPORT ASS Y

FIRT ISSUE R. VOLPATO DATED 6-3-1974

LOC. (LOC.)      SIZE (SIZE)      NUMERO (DWG NO)      REV.      FOGLIO (SHEET)

I A3 C-280615 5 1 DI (OF) 1

REV.	REVISIONI (REVISION RECORD)	DIS. (DR)	DATA (DATE)	REV.	REVISIONI (REVISION RECORD)	DIS. (DR)	DATA (DATE)
S	OBSOLETE P/N's ET00-0244-97	F.B.	20 Nov 97	B	REVISED	M.F.	3-92
R	OBSOLETE P/N's 280615-3 AND 280616-3 (ET00-478-96)	C.P.	14 Nov 96	A	RELEASED	V.R.	9-75