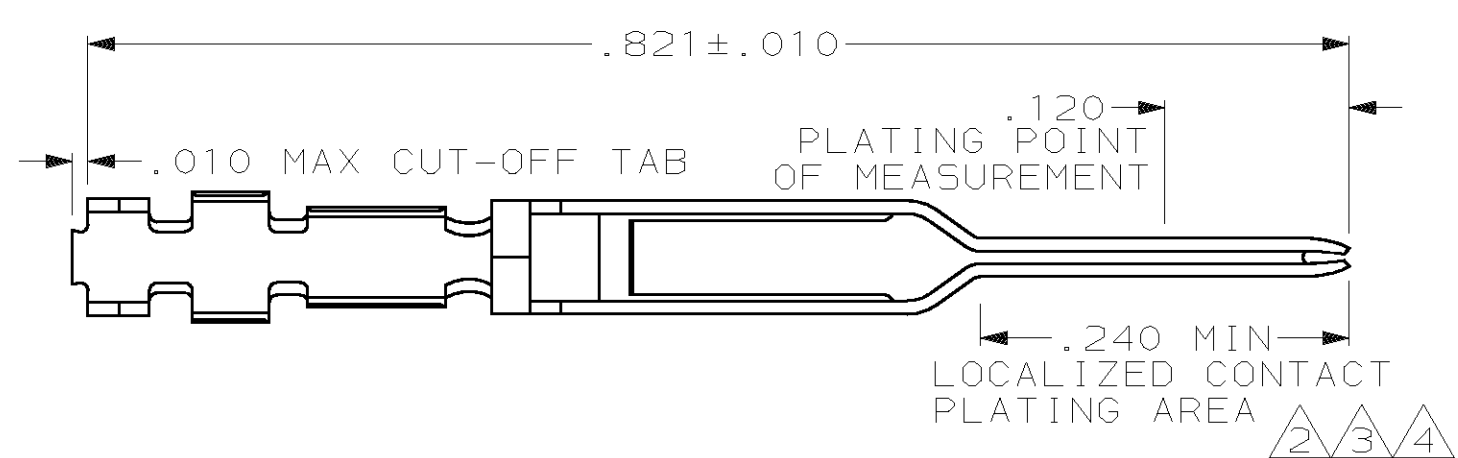
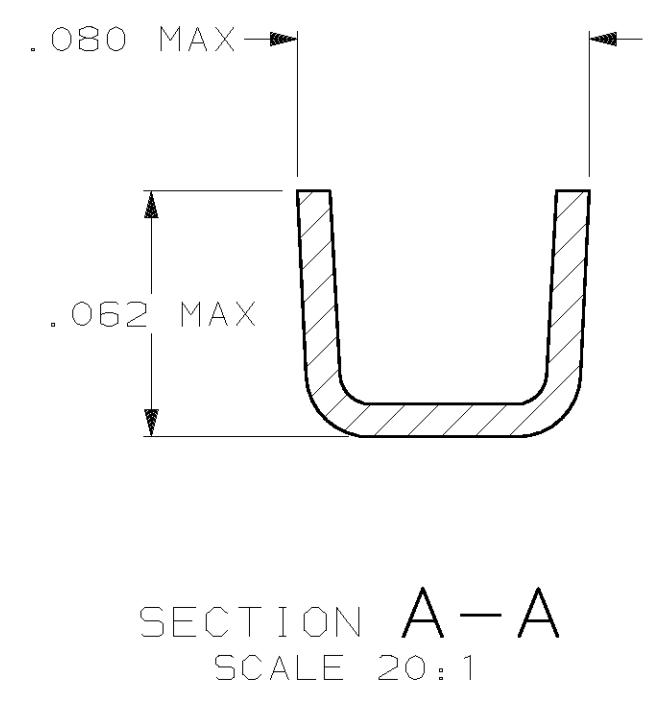
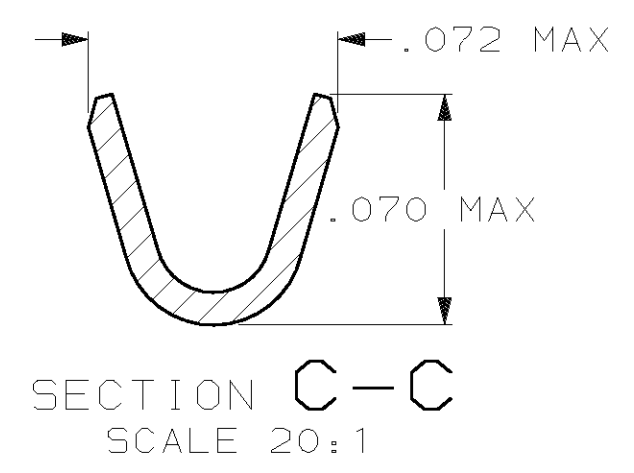
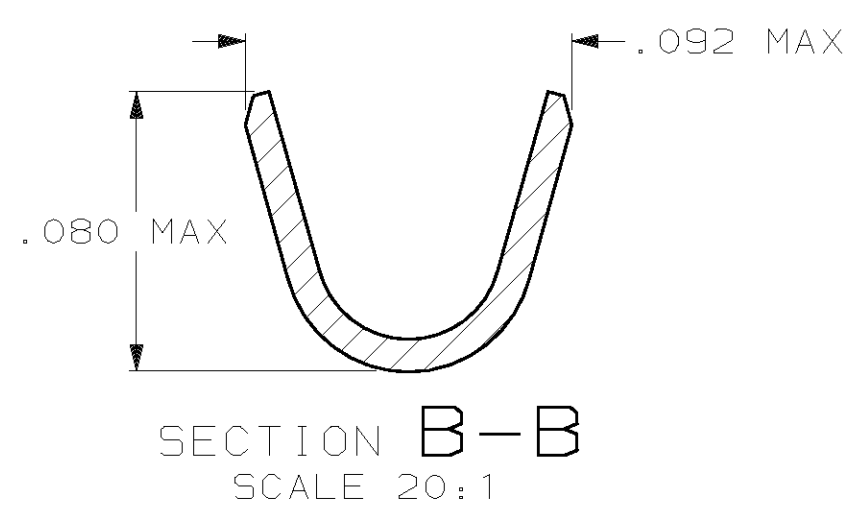
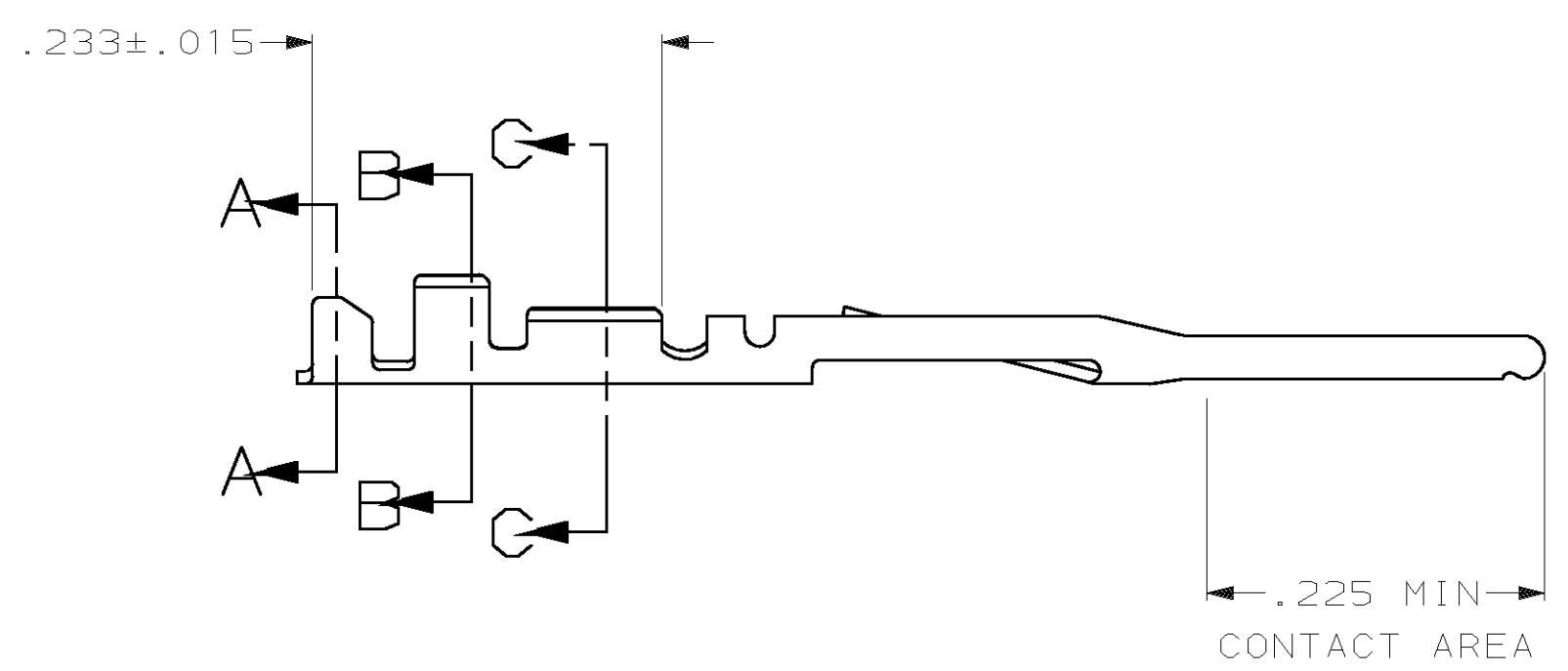


LOC	DIST	P	F	ZONE	LTR	DESCRIPTION	DATE	APPD
GP	00					D REVISED PER EC 0513-0205-03	21AUG03	JG



- ① FINISH: .000100 MIN THK BRIGHT TIN LEAD OVER .000050 MIN THK NICKEL ON ENTIRE CONTACT.
- ② FINISH: .000015 THK GOLD IN LOCALIZED CONTACT PLATING AREA AND GOLD FLASH IN OTHER AREAS OVER .000050 MIN NICKEL ON ENTIRE CONTACT.
- ③ FINISH: .000030 THK GOLD IN LOCALIZED CONTACT PLATING AREA AND GOLD FLASH IN OTHER AREAS OVER .000050 MIN NICKEL ON ENTIRE CONTACT.
- ④ FINISH: .000050 THK GOLD IN LOCALIZED CONTACT PLATING AREA AND GOLD FLASH IN OTHER AREAS OVER .000050 MIN NICKEL ON ENTIRE CONTACT.
- 5. FOR 22-26 AWG WIRE WITH AN INSULATION RANGE OF .040-.056 DIA.
- ⑥ FINISH: .000100 MIN THK TIN OVER .000050 MIN THK NICKEL ON ENTIRE CONTACT.



⑥	1-86557-9	1-86561-0
①	1-86557-4	86561-9
④	86557-7	86561-7
②	86557-6	86561-6
③	86557-4	86561-4
FINISH	REELED PART NO	PART NO

DO NOT SCALE PRINT. UNLESS SPECIFIED DIMENSIONS IN INCHES TOLERANCES ON :		DR 6-27-89 J. GALLUCCI		AMP AMP INCORPORATED Harrisburg, Pa. 17105	
2 PLC DEC ± -		CHK 6-28-89 D.L. ROCKER <td colspan="2">NAME</td>		NAME	
3 PLC DEC ± .005		APPD 6-29-89 G.D. MILLER <td colspan="2">CONTACT, PIN, .025 SQ</td>		CONTACT, PIN, .025 SQ	
ANGLES ± -		APPD 6-29-89 W.T. PAREKER <td colspan="2">ROUND WIRE, .100¢,</td>		ROUND WIRE, .100¢,	
MATERIAL		PRODUCT SPEC		FFC	
PHOS. BRONZE		108-9024		SIZE	
FINISH		APPLICATION SPEC		FSCM NO	
SEE TABLE		114-16003		00779	
WEIGHT		-		DRAWING NO	
				86561	
		SCALE 8:1		SHEET 1 OF 1	