

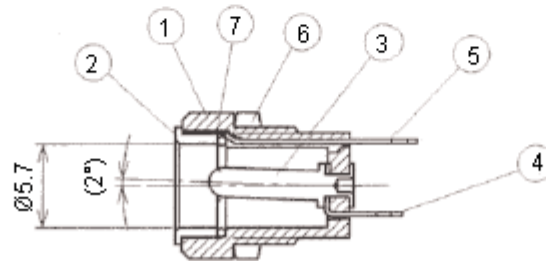
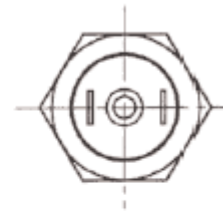
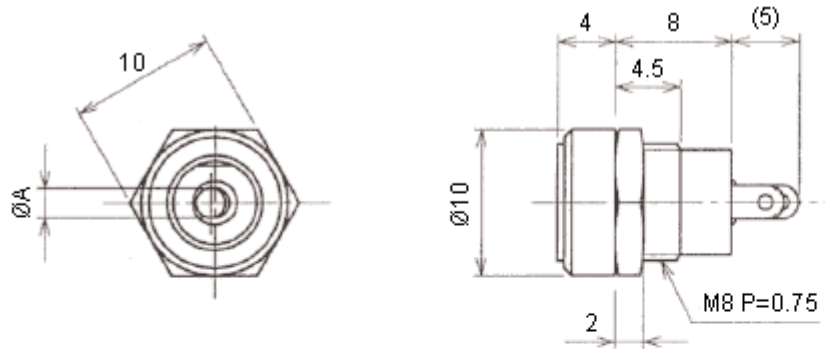


PART NO.

MJ-15SR

REVISIONS

ECN #	REV	DESCRIPTION	DRAWN	DATE	CHECKD	DATE	APPRVD	DATE
-	A	RELEASED	Naveen	4/10/10	Jagan	4/10/10	Farnell	19/10/10



回路
Circuit



Dimensions: Millimetres

This data sheet and its contents (the "Information") belong to the Premier Farnell Group (the "Group") or are licensed to it. No licence is granted for the use of it other than for information purposes in connection with the products to which it relates. No licence of any intellectual property rights is granted. The Information is subject to change without notice and replaces all data sheets previously supplied. The Information supplied is believed to be accurate but the Group assumes no responsibility for its accuracy or completeness, any error in or omission from it or for any use made of it. Users of this data sheet should check for themselves the Information and the suitability of the products for their purpose and not make any assumptions based on information included or omitted. Liability for loss or damage resulting from any reliance on the Information or use of it (including liability resulting from negligence or where the Group was aware of the possibility of such loss or damage arising) is excluded. This will not operate to limit or restrict the Group's liability for death or personal injury resulting from its negligence. SPC MULTICOMP is the registered trademark of the Group. © Premier Farnell plc 2010.

TOLERANCES:
UNLESS OTHERWISE SPECIFIED, DIMENSIONS ARE FOR REFERENCE PURPOSES ONLY.

DRAWN BY:	DATE:
Naveen	04/10/10
CHECKED BY:	DATE:
Jagan	04/10/10
APPROVED BY:	DATE:
Farnell	19/10/10

DRAWING TITLE:			
Chassis Socket - PSU, Panel Mount			
SIZE	DWG NO.	ELECTRONIC FILE	REV
A	M10002475	MJ14SR + MJ15SR_DWG	A
SCALE: NTS		U.O.M.: mm	SHEET: 1 OF 2



PART NO.

MJ-15SR

REVISIONS

ECN #	REV	DESCRIPTION	DRAWN	DATE	CHECKD	DATE	APPRVD	DATE
-	A	RELEASED	Naveen	4/10/10	Jagan	4/10/10	Farnell	19/10/10

Specifications:

Current rating : 12V dc 1A.
 Minimum insulation resistance : 500V DC/100M ohms.
 Withstanding voltage : 500V ac/1 minute.
 Maximum contact resistance : 30m ohms.

Material and finish:

Item	Part Name	Material	Quantity	Finish	Note
1	Body	PA	1	-	-
2	Ring	BSBM		Ni	
3	Pin				
4	Terminal A to A	BSR t = 0.3			
5	Terminal B to B				
6	Nut	Steel			
7	Contact resistance	PBS			

Specification Table

Description	A (Ø)	Metal Plug (Ø)	Part Number
Chassis Socket, PSU, Panel Mount	2.35	5.5 x 2.5	MJ-15SR

<http://www.farnell.com>
<http://www.newark.com>
<http://www.cpc.co.uk>

This data sheet and its contents (the "Information") belong to the Premier Farnell Group (the "Group") or are licensed to it. No licence is granted for the use of it other than for information purposes in connection with the products to which it relates. No licence of any intellectual property rights is granted. The Information is subject to change without notice and replaces all data sheets previously supplied. The Information supplied is believed to be accurate but the Group assumes no responsibility for its accuracy or completeness, any error in or omission from it or for any use made of it. Users of this data sheet should check for themselves the Information and the suitability of the products for their purpose and not make any assumptions based on information included or omitted. Liability for loss or damage resulting from any reliance on the Information or use of it (including liability resulting from negligence or where the Group was aware of the possibility of such loss or damage arising) is excluded. This will not operate to limit or restrict the Group's liability for death or personal injury resulting from its negligence. SPC MULTICOMP is the registered trademark of the Group. © Premier Farnell plc 2010.

TOLERANCES:
 UNLESS OTHERWISE SPECIFIED, DIMENSIONS ARE FOR REFERENCE PURPOSES ONLY.

DRAWN BY:	DATE:
Naveen	04/10/10
CHECKED BY:	DATE:
Jagan	04/10/10
APPROVED BY:	DATE:
Farnell	19/10/10

DRAWING TITLE:			
Chassis Socket - PSU, Panel Mount			
SIZE	DWG NO.	ELECTRONIC FILE	REV
A	M10002475	MJ14SR + MJ15SR_DWG	A
SCALE: NTS		U.O.M.: mm	SHEET: 2 OF 2