

NOTES:

1. CRIMP ACCEPTS 22 TO 26 GA. WIRE WITH (1.65)/.065 MAX INSULATION DIA.
2. DIMENSIONS GIVEN ACROSS CENTERLINES ARE SYMMETRICAL ABOUT THOSE CENTERLINES WITHIN HALF THE TOTAL TOLERANCE.
3. OPTIONAL DESIGN (.86±.05)/.034±.002
4. TERMINAL CONFORMS TO PRODUCT SPEC. 08-50.
5. CAT EAR OPTION TO BE USED WITH 41695 HOUSING ONLY.

MATERIAL CODE
 (.28)/.0106 THK
 BLANK=BRASS
 B=PHOS BRONZE

2578 - * - * * *

WINDING SPEC.
 A=PER ES-339-A
 BLANK=PER ES-339-B
 L=LOOSE

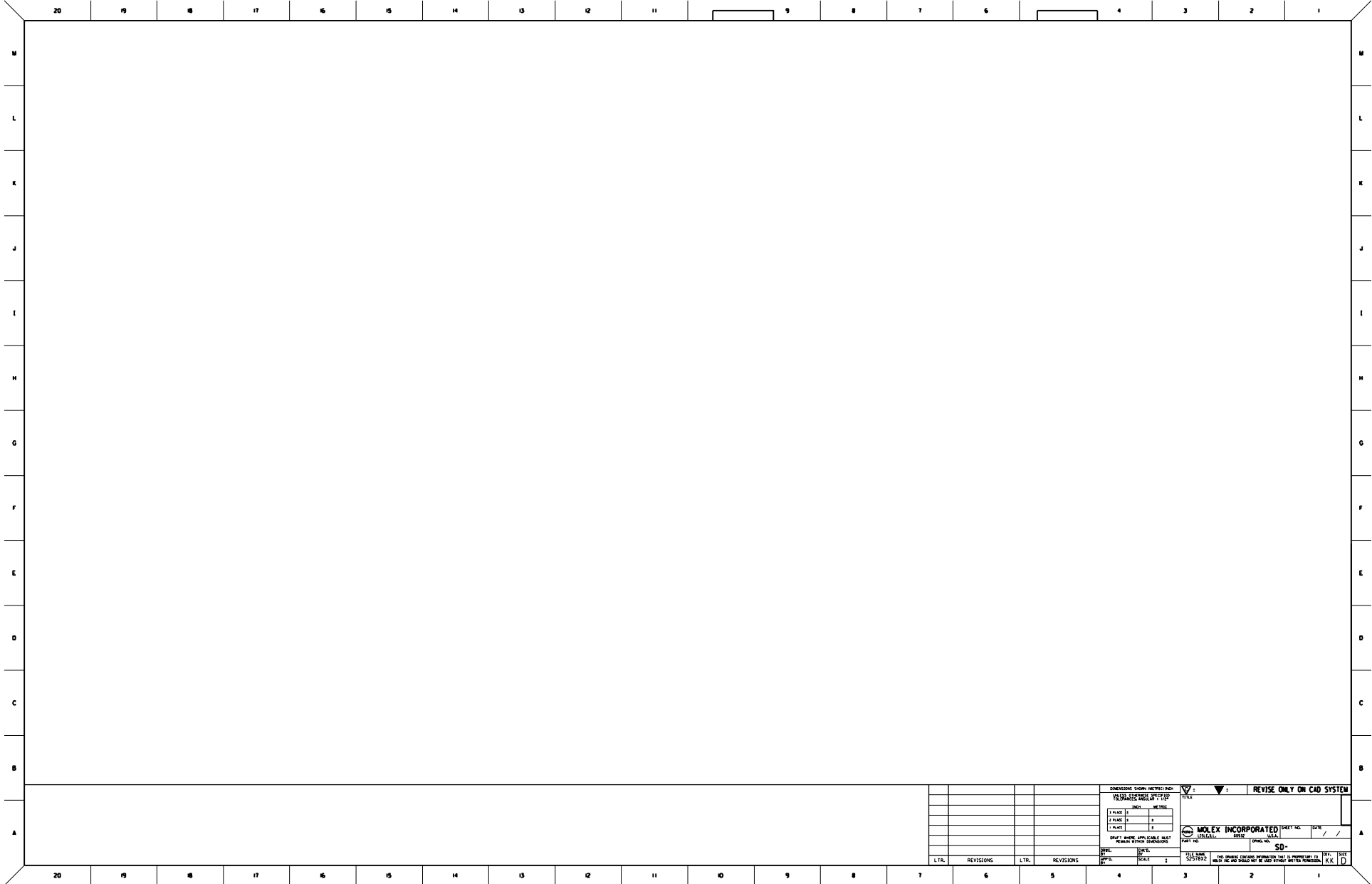
PLATING CODE
 (PER SDES-88)

OPTIONS

- BLANK=AS SHOWN
- I=WITH CAT EARS
- 2=LOW INSERTION FORCE
- (555) SELECT GOLD (.38)/15 m.i. MIN OVER (.76)/30 m.i. MIN NICKEL
- (550) SELECT GOLD (.38)/15 m.i. MIN OVER (.76)/30 m.i. MIN NICKEL WITH GOLD FLASH
- (P913) HOT TIN-LEAD DIP (.64/.25)/250/100 m.i.

REV	CARRIER	1-26-95	SAMIEC
2	S	PRINT MATCH PART	ESR LAB/08/
1	S1	4-22-95	SAMIEC
WFL	SHL	REV.	LTR.
			REVISIONS

DIMENSIONS SHOWN METRIC INCH		REVISE ONLY ON CAD SYSTEM	
TOLERANCES UNLESS OTHERWISE SPECIFIED		TITLE	
FINISH	UNIT	CRIMP TERMINAL	
FRACTION	INCH	22 TO 26 GA. WIRE	
FRACTION	MILLIMETER	MOLEX INCORPORATED	
FRACTION	MILLIMETER	REV. NO. 11/29/87	
PART NAME, QUANTITY, UNIT		SEE CHART	
PART NO. 2578		SD-2578	
DATE		DRAWN BY	
DATE		CHECKED BY	
DATE		APPROVED BY	
DATE		DATE	



L.T.R.		REVISIONS	L.T.R.	REVISIONS
L.T.R.		REVISIONS	L.T.R.	REVISIONS

DIMENSIONS SHOWN IN PARENT PARENTHESIS
 1. PLACE IN INCH 2. PLACE IN MILLIMETER
 3. PLACE IN INCH 4. PLACE IN MILLIMETER
 5. PLACE IN INCH 6. PLACE IN MILLIMETER

SHEET NAME AND SCALE MUST BE PRINTED ON THIS SHEET
 TITLE: SCALE: 1:1
 DATE:

MOLEX INCORPORATED SHEET NO. DATE
 PART NO. DRAWN BY:
 DESIGNED BY: CHECKED BY:
 APPROVED BY:

THIS DRAWING IS THE PROPERTY OF MOLEX INCORPORATED
 IT IS TO BE USED ONLY FOR THE PURPOSES SPECIFIED
 HEREON. ANY OTHER USE IS STRICTLY PROHIBITED.

FILE NAME: S257872
 DRAWN BY: DATE:
 CHECKED BY: DATE:
 APPROVED BY: DATE:

REVISIONS: DATE: BY:
 REVISIONS: DATE: BY:

REVISE ONLY ON CAD SYSTEM

MOLEX INCORPORATED
 1000 W. CALIFORNIA AVENUE
 AVONDALE, ILLINOIS 60009
 TEL: (708) 439-2000 FAX: (708) 439-2001
 WWW.MOLEX.COM