

6

5

4

3

2

1

DRWG. NO. CD-1906

PART NUMBERS ARE FOR LOOSE PIECE TO ORDER PARTS ON TAPE ADD A "T" TO END OF PART NUMBER

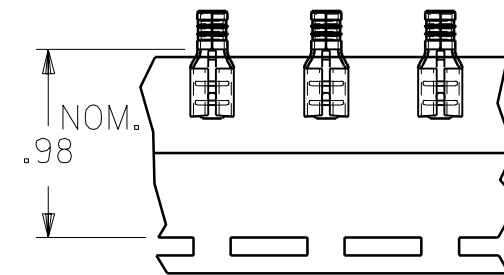
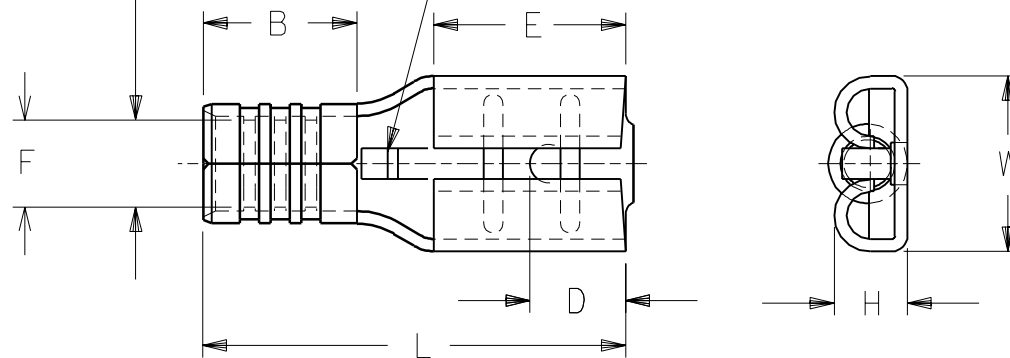
D

PART NUMBER	WIRE RANGE AWG	WIRE RANGE MM ²	FITS MALE TAB SIZE	STOCK THICK.	"L" MAX.	"B" ±.01	"W" MAX.	"D" ±.01	"H" ±.01	"E" NOM.	"F" MIN	
BB-1141	16-14	1.0-2.6	.250x.032	.016	.66	.190	.30	.156	.103	.31	∅.084	

D

WIRE RANGE

WIRE STOP



PARTS ON TAPE

MATERIAL: BRASS
FINISH: ELECTRO-TIN PLATING

A

RELEASE OF NEW
CUSTOMER DWG
ETC70766 3/25 EDB

LTR.

REVISIONS

DIMENSIONS SHOWN (METRIC) INCH

UNLESS OTHERWISE SPECIFIED
TOLERANCES: ANGULAR ± 1/2°

	INCH	METRIC
3 PLACE	± .005	± ---
2 PLACE	± .01	± 0.13
1 PLACE	± ---	± 0.25

DRAFT WHERE APPLICABLE MUST
REMAIN WITHIN DIMENSIONS

DRWG. BY	EDB	CHK'D. BY	RWD
APP'D. BY	RWD	SCALE	:

REVISE ONLY ON CAD SYSTEM

TITLE

KRIMPTITE
QUICK DISCONNECT
BB-1141 16-14 AWG

molex

ETC INC.

PINELLAS PARK, FLA. 33781 U.S.A.

SHEET NO.

DATE

97 / 3/24

PART NO.

BB-1141

DRWG. NO.

CD-1906

FILE NAME
CD1906
CSTTHIS DRAWING CONTAINS INFORMATION THAT IS PROPRIETARY TO
MOLEX-ETC INC. AND SHOULD NOT BE USED WITHOUT WRITTEN PERMISSION.

DIV.

SIZE

A

A

6

5

4

3

2

1