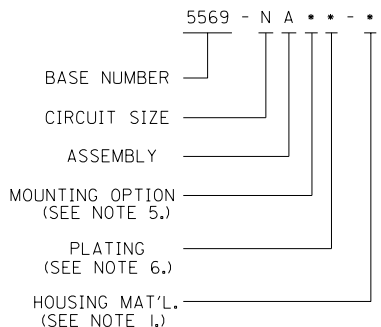


LEGEND:

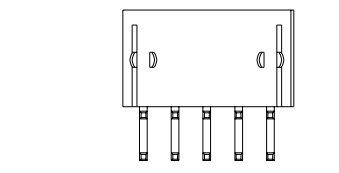
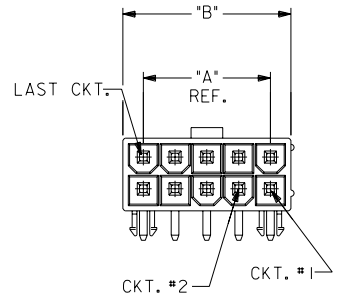


CIRCUIT SIZE	DIM. "A"	DIM. "B"
6	.33 (8.4)	.54 (13.8)
8	.50 (12.6)	.71 (18.0)
10	.66 (16.8)	.87 (22.2)
12	.83 (21.0)	1.04 (26.4)
14	.99 (25.2)	1.20 (30.6)
16	1.16 (29.4)	1.37 (34.8)
18	1.32 (33.6)	1.54 (39.0)
20	1.49 (37.8)	1.70 (43.2)
22	1.65 (42.0)	1.87 (47.4)
24	1.82 (46.2)	2.03 (51.6)

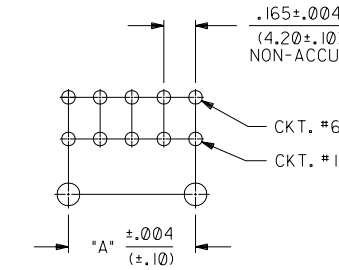
- NOTES:
- TERMINAL MATERIAL:
42109-****: BRASS ALLOY 260
43293-****: COLD DRAWN BRASS
WIRE (CDA 26000), 1/2HARD TEMPER
 - HOUSING MATERIAL:
"BLANK": = NYLON (PA66), UNFILLED, UL94V-2 COLOR: NATURAL.
"100" = NYLON (PA66), UNFILLED, UL94V-2 COLOR: BLACK.
"BL" = NYLON (PA66), UNFILLED, UL94V-2 COLOR: DYED BLACK
"210" = NYLON (PA66), UNFILLED, UL94V-0 COLOR: NATURAL.
"400" = NYLON (PA66), UNFILLED, UL94V-0 COLOR: BLACK.

- PART MATES WITH MINI-FIT JR. RECEPTACLE #5557.
- PART IS DESIGNED IN METRIC.
- MOUNTING OPTIONS:
1 - SCREW MOUNT (SEE *SD-5569-NA*I SERIES DWGS.)
2 - PEG MOUNT
- TERMINAL PLATING:
"BLANK" - .000200/(.00508) MIN. TIN OVER .000100/(.00254) MIN. COPPER.
G - .000030/(.00076) MIN. GOLD OVER .000050/(.00127) MIN. NICKEL.
G2 - .000015/(.00038) MIN. GOLD OVER .000030/(.00076) MIN. NICKEL. (531)
G3 - .000050/(.00127) MIN. GOLD OVER .000050/(.00127) MIN. NICKEL.
*GS - .000030/(.00076) MIN. SELECT GOLD AND .000100/(.00254) MIN. SELECT MATTE TIN OVER .000050/(.00127) MIN. NICKEL.
*GS2 - .000015/(.00038) MIN. SELECT GOLD AND .000100/(.00254) MIN. SELECT MATTE TIN OVER .000050/(.00127) MIN. NICKEL.
*GS3 - .000050/(.00127) MIN. SELECT GOLD AND .000100/(.00254) MIN. SELECT MATTE TIN OVER .000050/(.00127) MIN. NICKEL.
S - .000100/(.00254) MIN. TIN OVER .000050/(.00127) MIN. NICKEL. (154)
*THE PRIMARY SHIPPING CARTON WILL BE LABELED "COMPLIANT TO RoHS DIRECTIVE 2002/95/EC AND ELV ANNEX II OF DIRECTIVE 2000/53/EC." CARTONS WITHOUT THIS LABEL MAY CONTAIN PRODUCT WITH TIN-LEAD PLATING.

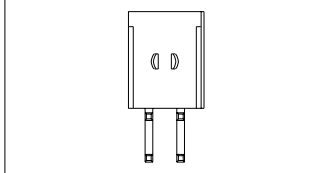
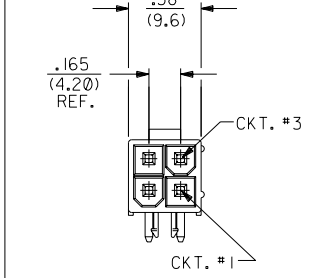
7) PRODUCT SPECIFICATION AND PROCESSING PARAMETERS SHOWN IN CHART AT RIGHT.



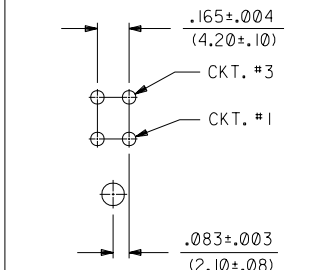
5569-A2**



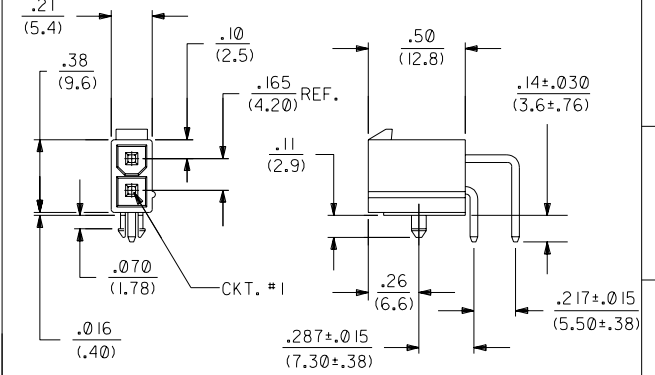
RECOMMENDED HOLE LAYOUT FOR .070/(1.78) MAX. THICK P.C. BOARD (SEE NOTE 4.)



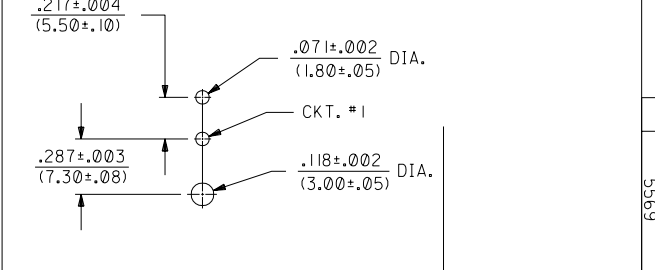
5569-04A2**



RECOMMENDED HOLE LAYOUT FOR .070/(1.78) MAX. THICK P.C. BOARD (SEE NOTE 4.)



5569-02A2**



RECOMMENDED HOLE LAYOUT FOR .070/(1.78) MAX. THICK P.C. BOARD (SEE NOTE 4.)

5569-***A2S-BL	PS-5556-001
5569-***A2G3-BL	PS-5556-001
5569-***A2G2-BL	PS-5556-001
5569-***A2G-BL	PS-5556-001
5569-***A2-BL	PS-5556-001
5569-***A2G3 & -***A2G3-210	PS-5556-001
5569-***A2S & -***A2S-210	PS-5556-001
5569-***A2GS3 & -***A2GS3-210	PS-5556-001
5569-***A2GS2 & -***A2GS2-210	PS-5556-001
5569-***A2GS & -***A2GS-210	PS-5556-001
5569-***A2G2 & -***A2G2-210	PS-5556-001
5569-***A2G & -***A2G-210	PS-5556-001
5569-***A2 & -***A2-210	PS-5556-001

ENG. NO.	PROD. SPEC. NO.
PRODUCT SPEC. CHART	

ADD TOLERANCE ECN *UCP2004-2614 CSTEWARD,06-28-04		REVISED UCR2002-360 BANDURA 02-05-10	
REMOVED TIN-LEAD ECN *UCP2004-1860 CAMPBELL 04-03-24		REVISED UCR2001-0188 JIHWANG 01-03-06	
DYED BLK WAS NATL ECN UCP2003-1629 CSTEWARD,03-01-27		REVISED PER UCR2000-0039 MBANDURA 99/07/19	
5	12	15	
4	13	14	
3	12	14	
2	12	13	
1	K	13	

MFG, SH, REV, LTR, REVISIONS

UNLESS OTHERWISE SPECIFIED TOLERANCES: ANGULAR ± 1/2°

PLATE	INCH	METRIC
3 PLATE	± .010	--
2 PLATE	± .015 ± .25	--
1 PLATE	--	± .38

DRAFT WHERE APPLICABLE MUST REMAIN WITHIN DIMENSIONS

DRWG. RJF BY: RAS CHK'D. BY: GT SCALE 2:1

FILE NAME: S4556SK1.DWG

MOLEX INCORPORATED
LITSE,ILL. 60532 U.S.A.

SHEET NO. 1 OF 5
DATE 2/16/88

PART NO. SDA-5569-NA2**
DRWG. NO. SEE SHT. 2-5

TITLE: MINI-FIT JR. RIGHT ANGLE HEADER ASSEMBLIES WITH MOUNTING PEGS

THIS DRAWING CONTAINS INFORMATION THAT IS PROPRIETARY TO MOLEX INC. AND SHOULD NOT BE USED WITHOUT WRITTEN PERMISSION.

13

12

11

10

9

8

7

6

5

4

3

2

1

5569

B

A

A	B	C	D	F	F	G	H	I	J			
	PART NUMBER	ENG. NUMBER	CKT. SIZE	MTG. OPTION	PLATING (NOTE 6)	HSG. MAT'L.	PART NUMBER	ENG. NUMBER	CKT. SIZE	MTG. OPTION	PLATING (NOTE 6)	HSG. MAT'L.
13	39-30-1020	5569-02A2	2	PEGS	TIN OVER COPPER	94V-2	39-30-0020	5569-02A2-210	2	PEGS	TIN OVER COPPER	94V-0
	-1040	-04A2	4	▲	▲	▲	▲	-04A2-210	4	▲	▲	▲
	-1060	-06A2	6				-0060	-06A2-210	6			
	-1080	-08A2	8				-0080	-08A2-210	8			
	-1100	-10A2	10				-0100	-10A2-210	10			
	-1120	-12A2	12				-0120	-12A2-210	12			
	-1140	-14A2	14				-0140	-14A2-210	14			
	-1160	-16A2	16				-0160	-16A2-210	16			
	-1180	-18A2	18				-0180	-18A2-210	18			
	-1200	-20A2	20				-0200	-20A2-210	20			
	-1220	-22A2	22	▼	▼	▼	-0220	-22A2-210	22	▼	▼	▼
	39-30-1240	5569-24A2	24	PEGS	TIN OVER COPPER	94V-2	39-30-0240	5569-24A2-210	24	PEGS	TIN OVER COPPER	94V-0
10	39-30-1021	5569-02A2G	2	PEGS	30 M.I. GOLD	94V-2	39-30-1022	5569-02A2G-210	2	PEGS	30 M.I. GOLD	94V-0
	-1041	-04A2G	4	▲	▲	▲	▲	-04A2G-210	4	▲	▲	▲
	-1061	-06A2G	6				-1062	-06A2G-210	6			
	-1081	-08A2G	8				-1082	-08A2G-210	8			
	-1101	-10A2G	10				-1102	-10A2G-210	10			
	-1121	-12A2G	12				-1122	-12A2G-210	12			
	-1141	-14A2G	14				-1142	-14A2G-210	14			
	-1161	-16A2G	16				-1162	-16A2G-210	16			
	-1181	-18A2G	18				-1182	-18A2G-210	18			
	-1201	-20A2G	20				-1202	-20A2G-210	20			
	-1221	-22A2G	22	▼	▼	▼	-1222	-22A2G-210	22	▼	▼	▼
	39-30-1241	5569-24A2G	24	PEGS	30 M.I. GOLD	94V-2	39-30-1242	5569-24A2G-210	24	PEGS	30 M.I. GOLD	94V-0
7	39-30-0021	5569-02A2G2	2	PEGS	15 M.I. GOLD	94V-2	39-30-0022	5569-02A2G2-210	2	PEGS	15 M.I. GOLD	94V-0
	-0041	-04A2G2	4	▲	▲	▲	▲	-04A2G2-210	4	▲	▲	▲
	-0061	-06A2G2	6				-0062	-06A2G2-210	6			
	-0081	-08A2G2	8				-0082	-08A2G2-210	8			
	-0101	-10A2G2	10				-0102	-10A2G2-210	10			
	-0121	-12A2G2	12				-0122	-12A2G2-210	12			
	-0141	-14A2G2	14				-0142	-14A2G2-210	14			
	-0161	-16A2G2	16				-0162	-16A2G2-210	16			
	-0181	-18A2G2	18				-0182	-18A2G2-210	18			
	-0201	-20A2G2	20				-0202	-20A2G2-210	20			
	-0221	-22A2G2	22	▼	▼	▼	-0222	-22A2G2-210	22	▼	▼	▼
	39-30-0241	5569-24A2G2	24	PEGS	15 M.I. GOLD	94V-2	39-30-0242	5569-24A2G2-210	24	PEGS	15 M.I. GOLD	94V-0
4	NOT TOOLED	5569-02A2G3	2	PEGS	50 M.I. GOLD	94V-2	NOT TOOLED	5569-02A2G3-210	2	PEGS	50 M.I. GOLD	94V-0
	15-27-1514	-04A2G3	4	▲	▲	▲	▲	-04A2G3-210	4	▲	▲	▲
	15-27-1511	-06A2G3	6				▼	-06A2G3-210	6			
	15-27-1512	-08A2G3	8				NOT TOOLED	-08A2G3-210	8			
	15-27-1503	-10A2G3	10				15-27-1504	-10A2G3-210	10			
	NOT TOOLED	-12A2G3	12				NOT TOOLED	-12A2G3-210	12			
	NOT TOOLED	-14A2G3	14				▲	-14A2G3-210	14			
	15-27-1513	-16A2G3	16					-16A2G3-210	16			
	NOT TOOLED	-18A2G3	18					-18A2G3-210	18			
	▲	-20A2G3	20					-20A2G3-210	20			
	▼	-22A2G3	22	▼	▼	▼	▼	-22A2G3-210	22	▼	▼	▼
	NOT TOOLED	5569-24A2G3	24	PEGS	50 M.I. GOLD	94V-2	NOT TOOLED	5569-24A2G3-210	24	PEGS	50 M.I. GOLD	94V-0
1												

5569

12	SEE SHEET I.
D	SEE SHEET I.
B	SEE SHEET I.
LTR.	REVISIONS

12	SEE SHEET I.
D	SEE SHEET I.
B	SEE SHEET I.
LTR.	REVISIONS

UNLESS OTHERWISE SPECIFIED TOLERANCES ANGULAR ± 1/2°

INCH	METRIC
3 PLACE ± .010	---
2 PLACE ± .015	± .25
1 PLACE ---	± .38

DRAFT WHERE APPLICABLE MUST REMAIN WITHIN DIMENSIONS

DRWG. NO. SDA-5569-NA2-**-*

FILE NAME SA5569X2

THIS DRAWING CONTAINS INFORMATION THAT IS PROPRIETARY TO MOLEX INC. AND SHOULD NOT BE USED WITHOUT WRITTEN PERMISSION

6955

REVISE ONLY ON CAD SYSTEM

MOLEX INCORPORATED U.S.A.

DATE 8/16/88

SCALE 2:1