

LOC	DIST	REVISIONS				
		P	LTR	DESCRIPTION	DATE	DWN APVD
E	B		A	FIRST ISSUE	16JUL05	KR FWK

- NOTES:
- FOR TECHNICAL DATA REFER TO YOUR LOCAL TYCO ELECTRONICS SALES OFFICE.
 - ALL DIMENSIONS ARE NOMINAL FOR REFERENCE ONLY UNLESS OTHERWISE STATED.
 - FOR PACKAGING DETAILS SEE SHEET 2.
 - UL NUMBER E13288
 - MATERIAL: BODY – COPPER
SLEEVE – PVC (K65), 94V-0
 - APPLICATION SPEC 114-13196

2-1838143-0	0.5mmsq-1.5mmsq 22-16 (AWG)	3.5mm STUD SIZE STANDARD ENTRY	RED RING TERMINAL (INSULATED)	3000	1000	3.70	5.50	17.50	4.30	10.50	0.75	0.80	0.5mmsq-1.5mmsq 22-16(AWG)	3.5	RED RING TERMINAL (INSULATED)	2-1838143-0
1-1838143-0				3500	100											1-1838143-0
STOCK NUMBER	PACKING LABEL DESCRIPTION LINE 3	PACKING LABEL DESCRIPTION LINE 2	PACKING LABEL DESCRIPTION LINE 1	INNER CARTON QTY	QTY	d2 (±0.20)	B (±0.30)	L (±1.50)	D (±0.50)	E (±1.50)	t (±0.10)	t1 (±0.20)	WIRE SIZE (mmsq) & (AWG)	STUD SIZE (mm)	DESCRIPTION	PART No
						DIMENSIONS										

THIS DRAWING IS A CONTROLLED DOCUMENT.

DIMENSIONS:
mm

MATERIAL
-

TOLERANCES UNLESS OTHERWISE SPECIFIED:

0 PLC ± 0.5
1 PLC ± 0.2
2 PLC ± 0.1
3 PLC ± 0.015
4 PLC ± -
ANGLES ± -
FINISH
-

DWN
K.Raghunandan
CHK
S. Parlow
APVD
F. Wheeler-King
PRODUCT SPEC
APPLICATION SPEC
WEIGHT
-

16JUL05
03/04/07
03/04/07

NAME
EURO-CRIMP INSULATED RED RING TERMINAL
0.5mmsq-1.5mmsq / 22-16 AWG RANGE

SIZE
A2

CAGE CODE
00779

DRAWING NO
C=1838143

RESTRICTED TO
-

CUSTOMER DRAWING

SCALE
NTS

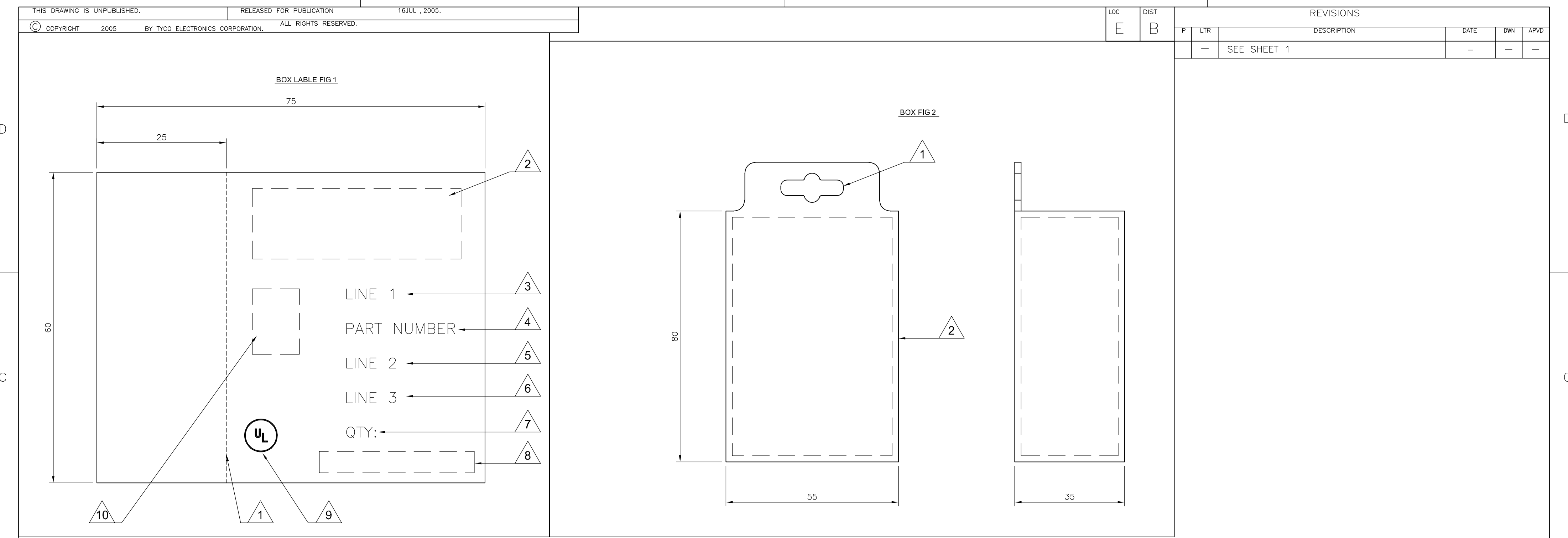
SHEET
1

OF
2

REV
A

tyco
Electronics

Tyco Electronics Corporation
Bideford, UK, EX39 4HE



LABEL NOTES:		
1. PERFORATED LINE:		DOTTED LINE TO BE ALIGNED WITH OPENING EDGE & FOLDED TO LEFT SIDE OF BOX.
2. LOGO:		USE LATEST REVISION OF TYCO COMPANY LOGO.
3. LINE1:		SEE SHEET 1, USE TEXT FROM COLUMN PACKAGING LABEL DESCRIPTION LINE 1.
4. PART NUMBER:		FOR 1--0 & 2--0 USE TYCO PART NUMBER. 1--0 = 1-1838143-0 2--0 = 2-1838143-0
5. LINE 2:		SEE SHEET 1, USE TEXT FROM COLUMN PACKAGING LABEL DESCRIPTION LINE 2.
6. LINE 3:		SEE SHEET 1, USE TEXT FROM COLUMN PACKAGING LABEL DESCRIPTION LINE 3.
7. QTY:		SEE SHEET 1, USE NUMBER FROM THE COLUMN QTY.
8. EAN BARCODE.		USE LATEST TYCO BARCODE SUPPLIED. 1--0 = TYCO BARCODE 2--0 = TYCO BARCODE
9. UL:		WHERE APPLICABLE USE UL LOGO, SEE SHEET 1.
10. PRODUCT PICTURE:		A PRODUCT PICTURE IS REQUIRED.

BOX NOTES:		
1. EURO SLOT:		TO BE POSITIONED TO CENTRE ON FRONT COVER.
2. BOX HINGE:		FRONT COVER TO BE HINGED ON RIGHT SIDE.
3. SPECIFICATION:		COVER TO BE FREE FROM POSSIBLE WARPING & CAPABLE OF BEING RE-SEALED MIN 100 TIMES.
4. LABEL:		CORRECT CUSTOMER BOX LABEL TO BE POSITIONED ON THE FRONT COVER WITH THE PERFORATED EDGE ON THE LEFT HAND SIDE.

PACK SPECIFICATION:		
1. CLEAR PLASTIC BOX:		PART NUMBER 1--0 TO BE PACKED 100 PARTS PER CLEAR PLASTIC BOX (FIG2) WITH THE CORRECT CUSTOMER LABEL (FIG1), 35 CLEAR PLASTIC BOXES OF THE SAME PART NUMBER ARE TO BE PACKED INTO A SUITABLE INNER CARTON BOX.
2. CLEAR PLASTIC BAG:		PART NUMBER 2--0, USE A SUITABLE CLEAR PLASTIC BAG FOR A 1000 PARTS, POSITION AN APPROPRIATE LABEL AS IN FIG1 BUT WITHOUT THE PERFORATED SIDE, CENTRE OF BAG. 3 BAGS ARE THEN TO BE PACKED INTO A SUITABLE INNER CARTON BOX.
3. INNER CARTON LABEL:		LABEL AS PER CLEAR PLASTIC BAG NOTE 2 BUT WITH INNER CARTON QTY 3000 TO BE POSITIONED ON THE SIDE OF THE BOX FOR VIEWING WHEN STORED.

THIS DRAWING IS A CONTROLLED DOCUMENT.

DIMENSIONS:

mm

TOLERANCES UNLESS OTHERWISE SPECIFIED:

0 PLC	± 0.5
1 PLC	± 0.2
2 PLC	± 0.1
3 PLC	± 0.015
4 PLC	± -
ANGLES	± -

MATERIAL

-

FINISH

-

DWN K.Raghu

16JUL05

CHK S. Parlow

03/04/07

APVD F. Wheeler-King

03/04/07

PRODUCT SPEC

APPLICATION SPEC

WEIGHT

-

CUSTOMER DRAWING

tyco

Electronics

Tyco Electronics Corporation

Bideford, UK, EX39 4HE

NAME

EURO-CRIMP INSULATED RED RING TERMINAL

0.5mmsq-1.5mmsq / 22-16 AWG RANGE

SIZE

A2

CAGE CODE

00779

DRAWING NO

C=1838143

RESTRICTED TO

-

SCALE

NTS

SHEET

2

OF

2

REV

A