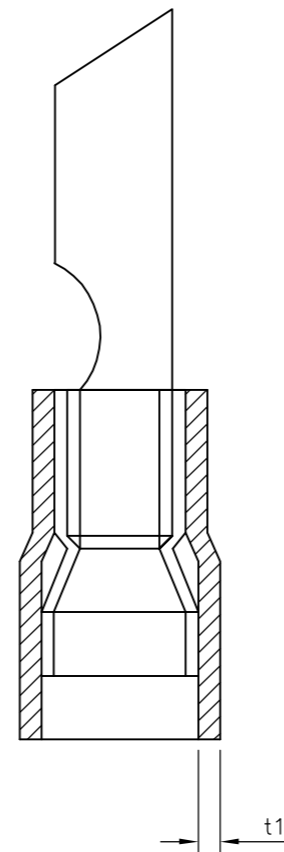
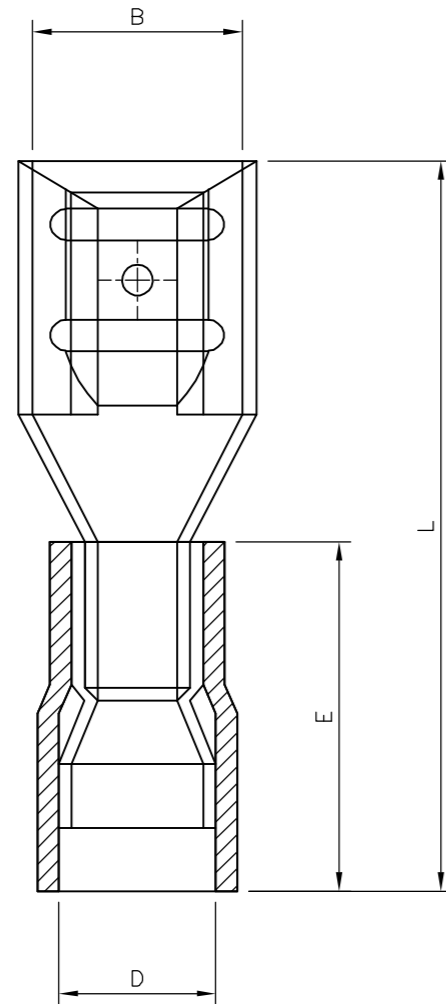
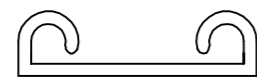


THIS DRAWING IS UNPUBLISHED. RELEASED FOR PUBLICATION 18AUG, 2005.
 © COPYRIGHT 2005 BY TYCO ELECTRONICS CORPORATION. ALL RIGHTS RESERVED.

| LOC | DIST | REVISIONS | | | | | |
|-----|------|-----------|-----|-------------|---------|-----|------|
| | | P | LTR | DESCRIPTION | DATE | DWN | APVD |
| E | B | A | | FIRST ISSUE | 18AUG05 | KR | FWK |



- NOTES:
- FOR TECHNICAL DATA REFER TO YOUR LOCAL TYCO ELECTRONICS SALES OFFICE.
 - ALL DIMENSIONS ARE NOMINAL FOR REFERENCE ONLY UNLESS OTHERWISE STATED.
 - FOR PACKAGING DETAILS SEE SHEET 2.
 - MATERIAL: BODY - BRASS
SLEEVE - PVC (K65), 94V-0
 - APPLICATION SPEC 114-13196

| 2-1838216-0 | 2.5mmsq - 6.0mmsq | 6.4x0.8mm STANDARD ENTRY | YELLOW FEMALE PUSH-ON TERMINAL (INSULATED) | 1500 | 500 | 6.70 | 25.00 | 6.50 | 14.00 | 0.40 | 0.80 | 2.5mmsq - 6.0mmsq | 6.40 X 0.8 | YELLOW FEMALE PUSH-ON TERMINAL (INSULATED) | 2-1838216-0 |
|--------------|----------------------------------|----------------------------------|--|------------------|-----|-----------|-----------|-----------|-----------|-----------|------------|--------------------------|------------|--|-------------|
| 1-1838216-0 | 12-10(AWG) | | | 1750 | 50 | | | | | | | 12-10(AWG) | | | 1-1838216-0 |
| STOCK NUMBER | PACKING LABEL DESCRIPTION LINE 3 | PACKING LABEL DESCRIPTION LINE 2 | PACKING LABEL DESCRIPTION LINE 1 | INNER CARTON QTY | QTY | B (±0.30) | L (±1.50) | D (±0.50) | E (±0.50) | t (±0.10) | t1 (±0.20) | WIRE SIZE (mmsq) & (AWG) | SIZE (mm) | DESCRIPTION | PART No |
| DIMENSIONS | | | | | | | | | | | | | | | |

THIS DRAWING IS A CONTROLLED DOCUMENT.

| | | |
|------------------|-----------------|----------|
| DWN | K.Raghuandan | 18AUG05 |
| CHK | S. Parlow | 02/04/07 |
| APVD | F. Wheeler-King | 02/04/07 |
| PRODUCT SPEC | | |
| APPLICATION SPEC | | |
| WEIGHT | - | |
| CUSTOMER DRAWING | | |

tyco Electronics Tyco Electronics Corporation
Bideford, UK, EX39 4HE

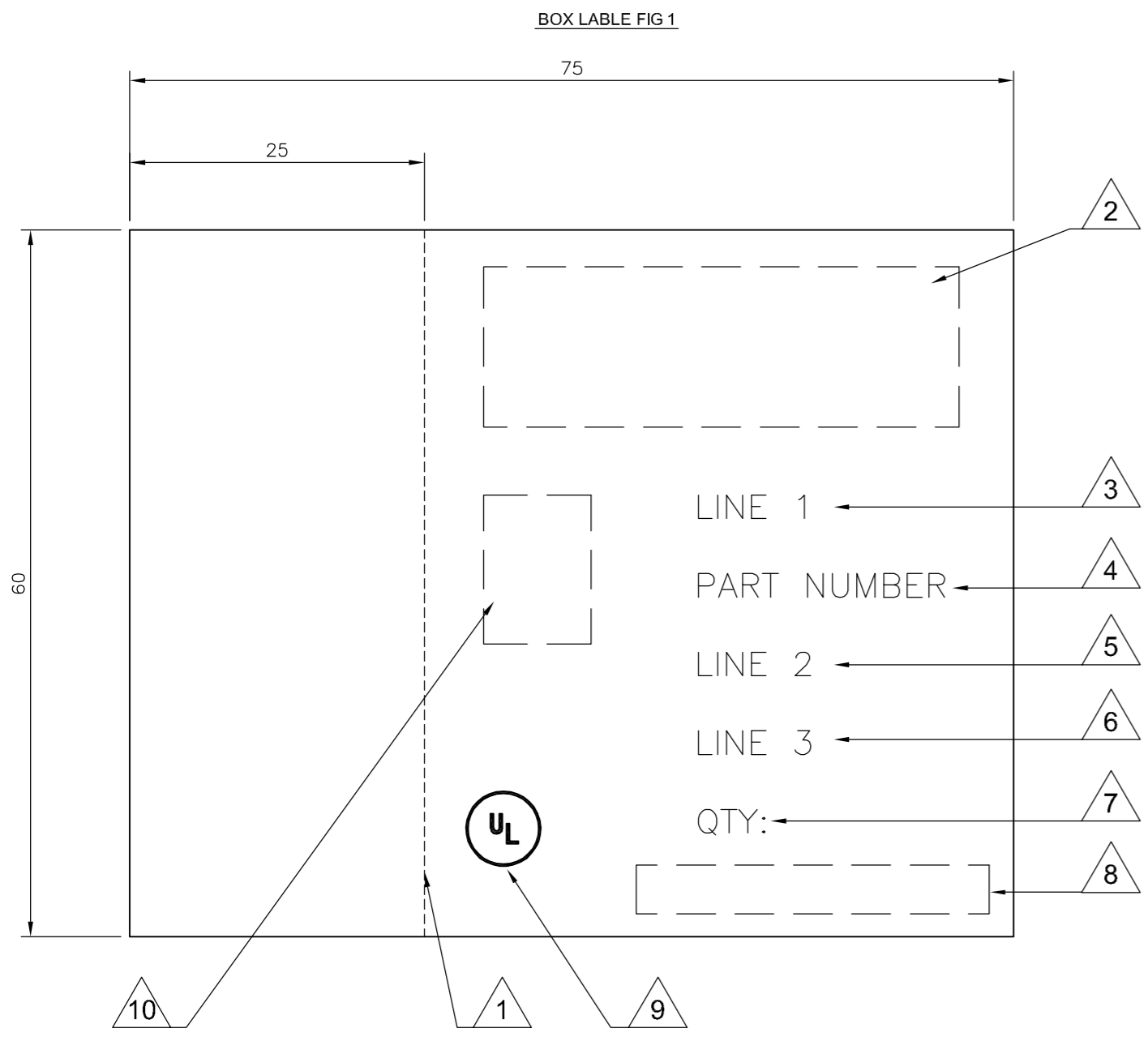
NAME: EURO-CRIMP INSULATED YELLOW FEMALE PUSH-ON TERMINAL
2.5mmsq - 6.0mmsq / 12-10 AWG RANGE

| | | | |
|-------|-----------|------------|---------------|
| SIZE | CAGE CODE | DRAWING NO | RESTRICTED TO |
| A2 | 00779 | C=1838216 | - |
| SCALE | NTS | SHEET | 1 OF 2 |
| REV | A | | |

1838216

THIS DRAWING IS UNPUBLISHED. RELEASED FOR PUBLICATION 18AUG ,2005.
 © COPYRIGHT 2005 BY TYCO ELECTRONICS CORPORATION. ALL RIGHTS RESERVED.

| LOC | | DIST | | REVISIONS | | | |
|-----|-----|-------------|------|-----------|------|--|--|
| P | LTR | DESCRIPTION | DATE | DWN | APVD | | |
| - | - | SEE SHEET 1 | - | - | - | | |



- LABEL NOTES:**
- 1. PERFORATED LINE: DOTTED LINE TO BE ALIGNED WITH OPENING EDGE & FOLDED TO LEFT SIDE OF BOX.
 - 2. LOGO: USE LATEST REVISION OF TYCO COMPANY LOGO.
 - 3. LINE1: SEE SHEET 1, USE TEXT FROM COLUMN PACKAGING LABEL DESCRIPTION LINE 1.
 - 4. PART NUMBER: FOR 1--0 & 2--0 USE TYCO PART NUMBER.
1--0 = 1-1838216-0
2--0 = 2-1838216-0
 - 5. LINE 2: SEE SHEET 1, USE TEXT FROM COLUMN PACKAGING LABEL DESCRIPTION LINE 2.
 - 6. LINE 3: SEE SHEET 1, USE TEXT FROM COLUMN PACKAGING LABEL DESCRIPTION LINE 3.
 - 7. QTY: SEE SHEET 1, USE NUMBER FROM THE COLUMN QTY.
 - 8. EAN BARCODE: USE LATEST TYCO BARCODE SUPPLIED.
1--0 = TYCO BARCODE
2--0 = TYCO BARCODE
 - 9. UL: WHERE APPLICABLE USE UL LOGO, SEE SHEET 1.
 - 10. PRODUCT PICTURE: A PRODUCT PICTURE IS REQUIRED.

- BOX NOTES:**
- 1. EURO SLOT: TO BE POSITIONED TO CENTRE ON FRONT COVER.
 - 2. BOX HINGE: FRONT COVER TO BE HINGED ON RIGHT SIDE.
 - 3. SPECIFICATION: COVER TO BE FREE FROM POSSIBLE WARPING & CAPABLE OF BEING RE-SEALED MIN 100 TIMES.
 - 4. LABEL: CORRECT CUSTOMER BOX LABEL TO BE POSITIONED ON THE FRONT COVER WITH THE PERFORATED EDGE ON THE LEFT HAND SIDE.

- PACK SPECIFICATION:**
- 1. CLEAR PLASTIC BOX: PART NUMBER 1--0 TO BE PACKED 50 PARTS PER CLEAR PLASTIC BOX (FIG2) WITH THE CORRECT CUSTOMER LABEL (FIG1), 35 CLEAR PLASTIC BOXES OF THE SAME PART NUMBER ARE TO BE PACKED INTO A SUITABLE INNER CARTON BOX.
 - 2. CLEAR PLASTIC BAG: PART NUMBER 2--0, USE A SUITABLE CLEAR PLASTIC BAG FOR 500 PARTS, POSITION AN APPROPRIATE LABEL AS IN FIG1 BUT WITHOUT THE PERFORATED SIDE, CENTRE OF BAG. 3 BAGS ARE THEN TO BE PACKED INTO A SUITABLE INNER CARTON BOX.
 - 3. INNER CARTON LABEL: LABEL AS PER CLEAR PLASTIC BAG NOTE 2 BUT WITH INNER CARTON QTY 1500 TO BE POSITIONED ON THE SIDE OF THE BOX FOR VIEWING WHEN STORED.

| | | | | |
|---|--|-------------------------------------|--|--------------------|
| THIS DRAWING IS A CONTROLLED DOCUMENT. | | DWN K.Raghuandan 18AUG05 | tyco Tyco Electronics Corporation | |
| DIMENSIONS: mm | | CHK S. Parlow 02/04/07 | Bideford, UK, EX39 4HE | |
| TOLERANCES UNLESS OTHERWISE SPECIFIED: 0 PLC ± 0.5 1 PLC ± 0.2 2 PLC ± 0.1 3 PLC ± 0.015 4 PLC ± - ANGLES ± - | | APVD F. Wheeler-King 02/04/07 | NAME EURO-CRIMP INSULATED YELLOW FEMALE PUSH-ON TERMINAL 2.5mmsq - 6.0mmsq / 12-10 AWG RANGE | |
| MATERIAL - | | FINISH - | SIZE A2 | RESTRICTED TO - |
| WEIGHT - | | CAGE CODE 00779 | DRAWING NO C=1838216 | SCALE NTS |
| CUSTOMER DRAWING | | SHEET 2 OF 2 | | REV A |

1838216