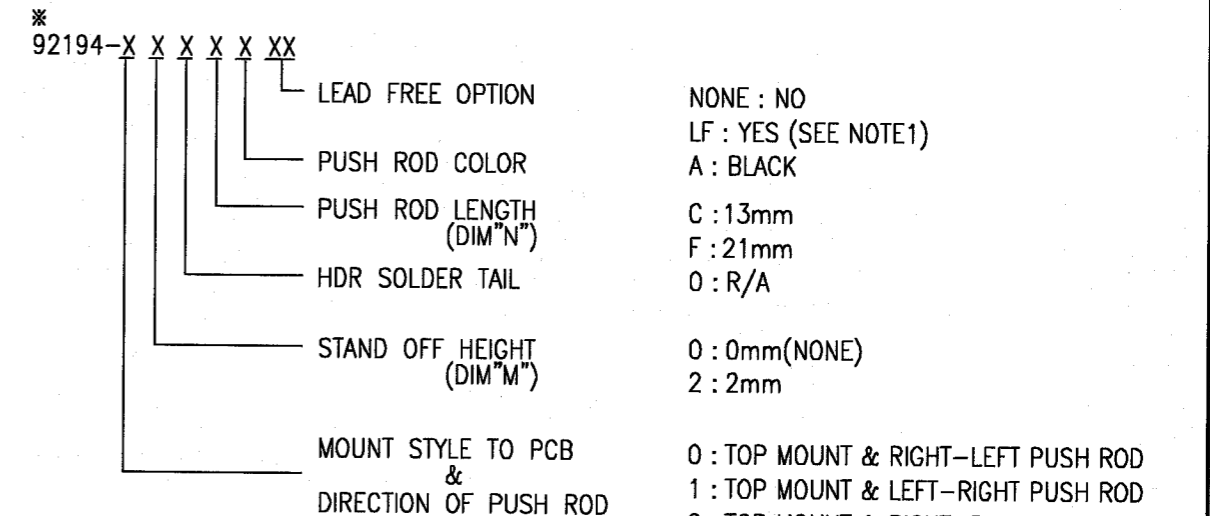


PRODUCT NO.  
92194

REVISIONS				
REV	DESCRIPTION	ECN	BY	DATE
A	RELEASED	J30022	N.T	1/19/95
B	REVISED	J30062	N.T	3/2/93
C	REVISED	J40349	M.K	1/23/95
D	REVISED	V60956	M.K	7/29/96
E	REVISED	N90076	M.K	7/22/99
F	REVISED	v04-0820	M.H	6/16/04
G	REVISED	j05-0367	M.H	6/17/05

PRODUCT NO. *92194-XXXXX	STAND OFF DIM "M"(mm)	UPPER DECK			LOWER DECK			DIM "P" (mm)	HDR COLOR	SHEET NO.	MOUNTING STYLE TO PCB & DIRECTION OF PUSH ROD
		(MECH+HDR) 92711-XXXXX	(MECH) 92192-XXXX	(HDR) 92140-XXX	(MECH+HDR) 92193-XXXXX	(MECH) 92192-XXXX	(HDR) 92140-XXX				
000CA	0	000CA	00CA	005	100CA	10CA	000	2.8	BLACK	NO.2	
000CALF	0	000CALF	00CA	005LF	100CALF	10CA	000LF	2.8	BLACK		
020CA	2	020CA	00CA	045	120CA	12CA	040	2.5	BLACK	NO.3	
020CALF	2	020CALF	00CA	045LF	120CALF	12CA	040LF	2.5	BLACK		
100CA	0	100CA	10CA	005	000CA	00CA	000	2.8	BLACK	NO.4	
100CALF	0	100CALF	10CA	005LF	000CALF	00CA	000LF	2.8	BLACK		
120CA	2	120CA	10CA	045	020CA	02CA	040	2.5	BLACK	NO.5	
120CALF	2	120CALF	10CA	045LF	020CALF	02CA	040LF	2.5	BLACK		
200CA	0	000CA	00CA	005	000CA	00CA	000	2.8	BLACK	NO.6	
200CALF	0	000CALF	00CA	005LF	000CALF	00CA	000LF	2.8	BLACK		
200FA	0	000FA	00FA	005	000FA	00FA	000	2.8	BLACK	NO.7	
200FALF	0	000FALF	00FA	005LF	000FALF	00FA	000LF	2.8	BLACK		
220CA	2	020CA	00CA	045	020CA	02CA	040	2.5	BLACK	NO.8	
220CALF	2	020CALF	00CA	045LF	020CALF	02CA	040LF	2.5	BLACK		
300CA	0	100CA	10CA	005	100CA	10CA	000	2.8	BLACK	NO.9	
300CALF	0	100CALF	10CA	005LF	100CALF	10CA	000LF	2.8	BLACK		
320CA	2	120CA	10CA	045	120CA	12CA	040	2.5	BLACK	NO.9	
320CALF	2	120CALF	10CA	045LF	120CALF	12CA	040LF	2.5	BLACK		
320FA	2	120FA	10FA	045	120FA	12FA	040	2.5	BLACK	NO.9	
320FALF	2	120FALF	10FA	045LF	120FALF	12FA	040LF	2.5	BLACK		
500CA	0	600CA	00CA	505	500CA	10CA	500	2.8	NATURAL	NO.9	
500CALF	0	600CALF	00CA	505LF	500CALF	10CA	500LF	2.8	NATURAL		
500FA	0	600FA	00FA	505	500FA	10FA	500	2.8	NATURAL	NO.9	
500FALF	0	600FALF	00FA	505LF	500FALF	10FA	500LF	2.8	NATURAL		
520CA	2	620CA	00CA	545	520CA	12CA	540	2.5	NATURAL	NO.9	
520CALF	2	620CALF	00CA	545LF	520CALF	12CA	540LF	2.5	NATURAL		
600CA	0	500CA	10CA	505	600CA	00CA	500	2.8	NATURAL	NO.9	
600CALF	0	500CALF	10CA	505LF	600CALF	00CA	500LF	2.8	NATURAL		
620CA	2	520CA	10CA	545	620CA	02CA	540	2.5	NATURAL	NO.9	
620CALF	2	520CALF	10CA	545LF	620CALF	02CA	540LF	2.5	NATURAL		
700CA	0	500CA	10CA	505	500CA	10CA	500	2.8	NATURAL	NO.9	
700CALF	0	500CALF	10CA	505LF	500CALF	10CA	500LF	2.8	NATURAL		
720CA	2	520CA	10CA	545	520CA	12CA	540	2.5	NATURAL	NO.9	
720CALF	2	520CALF	10CA	545LF	520CALF	12CA	540LF	2.5	NATURAL		
800CA	0	600CA	00CA	505	600CA	00CA	500	2.8	NATURAL	NO.9	
800CALF	0	600CALF	00CA	505LF	600CALF	00CA	500LF	2.8	NATURAL		
820CA	2	620CA	00CA	545	620CA	02CA	540	2.5	NATURAL	NO.9	
820CALF	2	620CALF	00CA	545LF	620CALF	02CA	540LF	2.5	NATURAL		



NOTE  
1. THIS PRODUCT MEETS EUROPEAN UNION DIRECTIVES AND OTHER COUNTRY REGULATIONS AS DESCRIBED IN GS-22-008.

DF-003A REV F  
DO NOT SCALE. PRINT THIS INFORMATION IS CONFIDENTIAL AND IS DISCLOSED TO YOU ON CONDITION THAT NO FURTHER DISCLOSURE IS MADE BY YOU TO OTHER THAN FCI PERSONNEL WITHOUT WRITTEN AUTHORIZATION FROM FCI JAPAN K.K.

SHEET INDEX	ISSUE	G	C	C	D	D	D	C	D	C										
	SH NO.	1	2	3	4	5	6	7	8	9										
TOLERANCES UNLESS OTHERWISE SPECIFIED											MAT		DR <i>M. Hasegawa</i> 6/17/05		DATE		CUSTOMER COPY		TITLE 68P DOUBLE EJECTOR HEADER ASSY FOR TYPE I/II/III	
LINEAR											FINISH		ENGR <i>M. Hasegawa</i> 6/17/05		THIRD ANGLE PROJ		PRODUCT FAMILY SANF Header PCMCIA		CODE JP	
ANGLES													CHK <i>M. Hasegawa</i> 6/20/07		APPD <i>H. Ishikawa</i> 6/20/07		UNIT MM		SCALE SIZE DWG. NO. 92194 REV SHEET G 1of9	



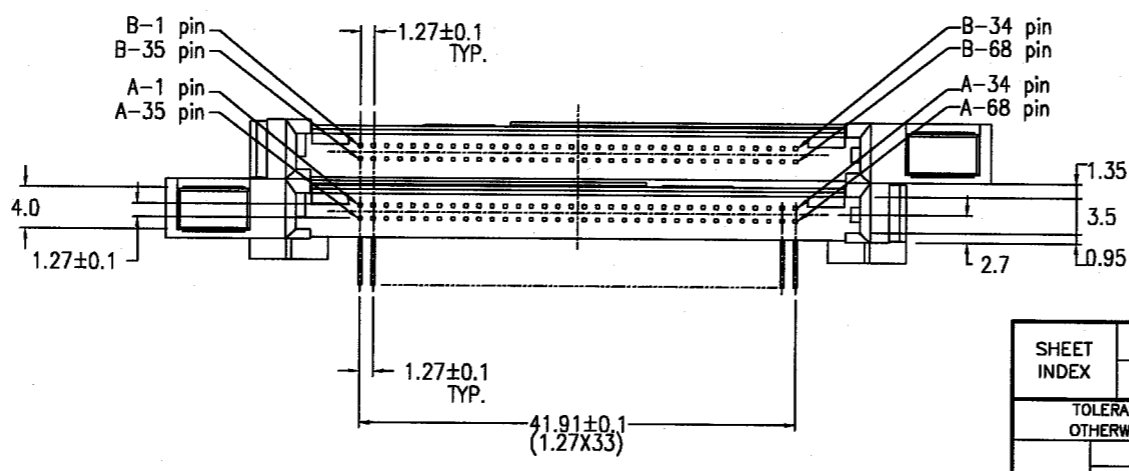
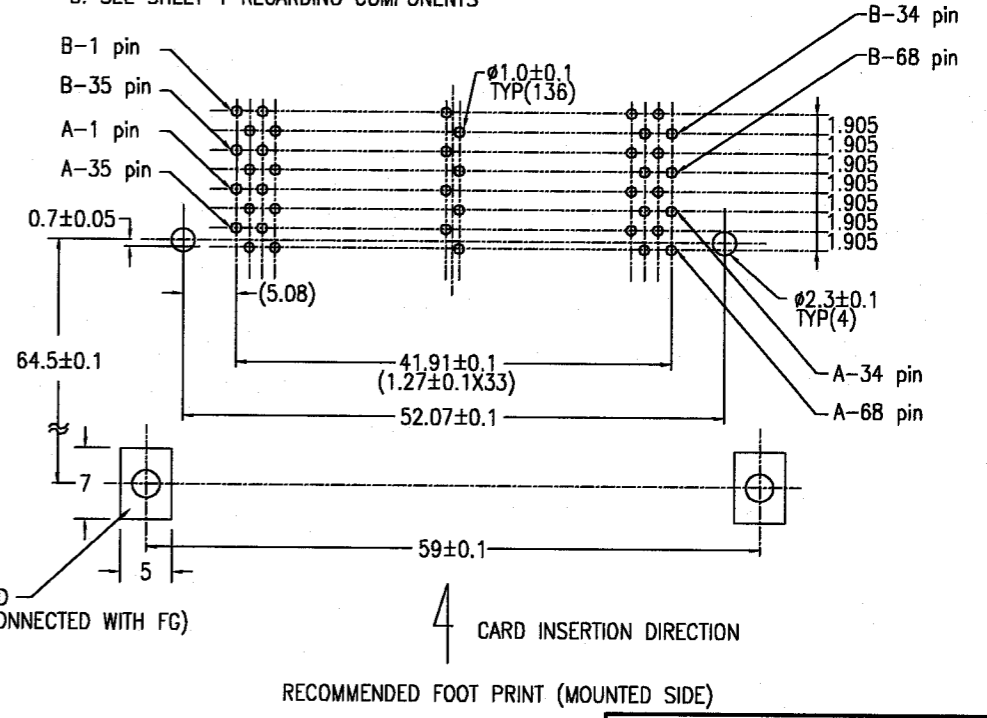
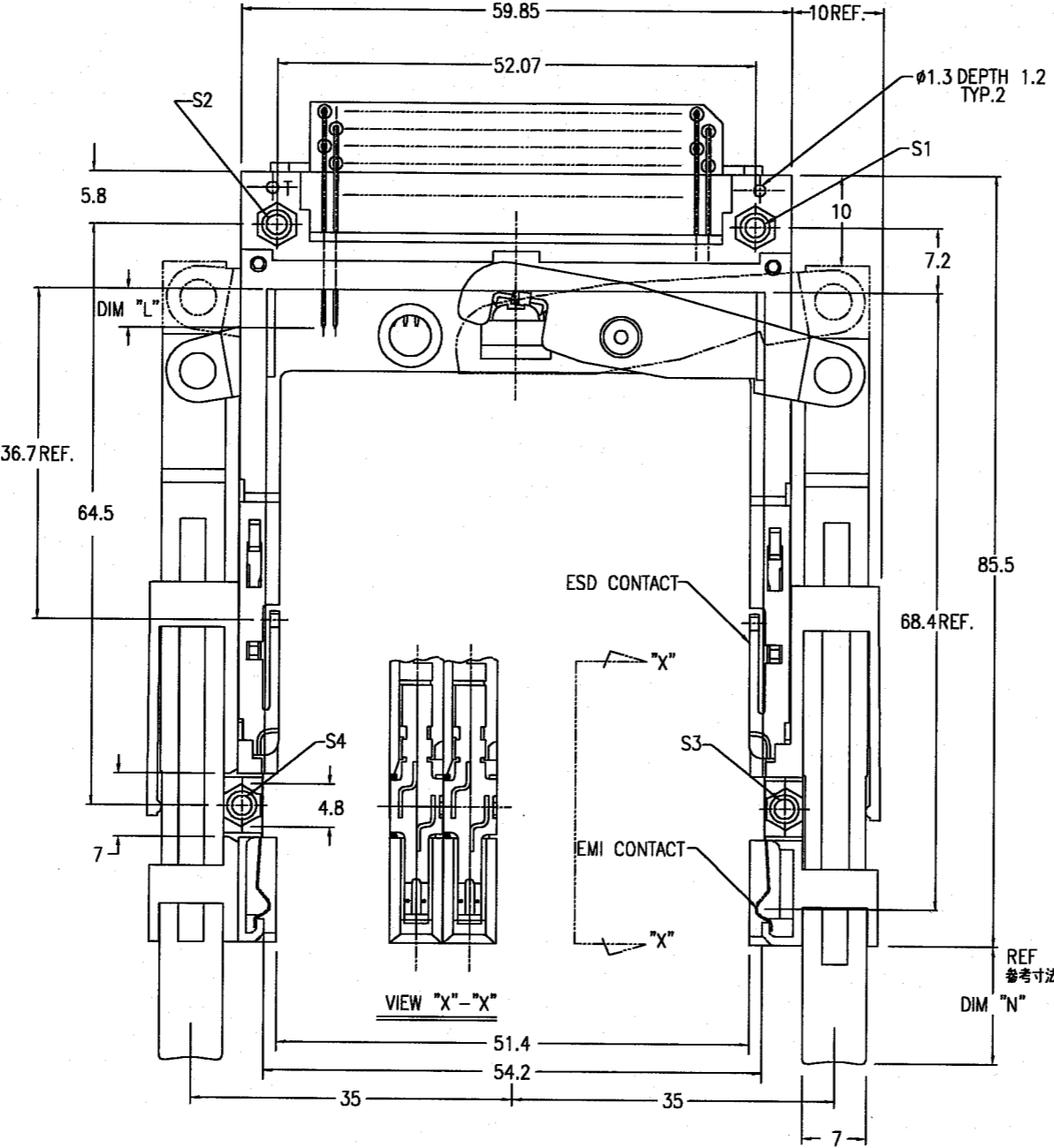
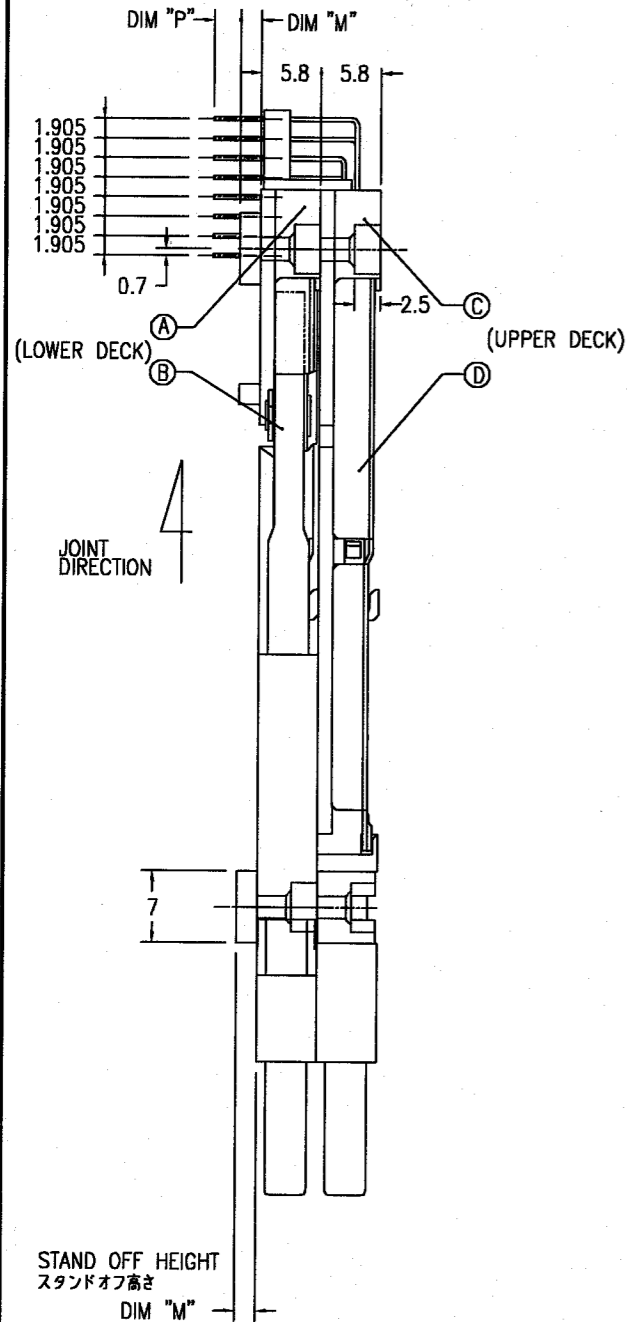
PART NO.	
92194-000CA	92194-000CALF
92194-020CA	92194-020CALF

REVISIONS				
REV	DESCRIPTION	ECN	BY	DATE
A	RELEASED	J30022	N.T	1/19/93
B	REVISED	J40349	M.K	1/23/95
C	REVISED	J05-0367	M.H	6/17/05

- NOTE**
- EJECT FORCE 3.5kg MAX.
  - ASSY PROCESS
    - TO MOUNT PART ④, ⑤ ON PWB WITH SCREW (S1,S2) AND SOLDER.
    - TO JOINT PART ③, ⑥ INTO PART ④, ⑤ THEN FIX PART ③, ⑥ WITH 2 SCREWS (S3,S4).
  - EJECT TRAVEL 8.0mm

- ④ MATERIAL
- PART ④, ⑤ (HEADER ASSY)
    - PLASTIC : HOUSING : LCP UL94V-0 BLACK
    - LOCATOR : G.F.6/6 NYLON UL94V-0 BLACK
    - PIN : PHOSPHOR BRONZE
  - PART ③, ⑥ (EJECT MECHANISM ASSY)
    - PLASTIC : GUIDE : POLYOHTHARAMID UL94V-0 BLACK
    - PUSH ROD : POLYOHTHARAMID UL94V-0 BLACK
    - PLATE : STAINLESS
    - EMI CONTACT : PHOSPHOR BRONZE
- ⑤ -1 FINISH (PIN)  
 UNDER PLATING : 0.5 μm MIN. Ni  
 CONTACT AREA : 0.1 μm MIN. GOLD OVER 0.5 μm MIN. Pd-Ni.  
 SOLDER TAIL : 2.5 μm MIN. Sn-Pb.
- ⑤ -2 FINISH (PIN) (FOR -\*\*\*\*LF)  
 UNDER PLATING : 0.5 μm MIN. Ni  
 CONTACT AREA : 0.1 μm MIN. GOLD OVER 0.5 μm MIN. Pd-Ni.  
 SOLDER TAIL : 2.5 μm MIN. Sn.

6. DIM "L"
- |          |         |          |
|----------|---------|----------|
| 4.25±0.1 | 3.5±0.1 | 5.0±0.1  |
| OTHERS   | 36.67   | 35.51.68 |
7. GENERAL TOLERANCE : ±0.3  
 B. SEE SHEET 1 REGARDING COMPONENTS



SHEET INDEX	ISSUE SH. NO.	TOLERANCES UNLESS OTHERWISE SPECIFIED	MAT	DR	ENGR	CHK	APPD	DATE	CUSTOMER COPY	THIRD ANGLE PROJ	UNIT	SCALE	SIZE	DWG. NO.	REV	SHEET
				M. Hasegawa		M. Hasegawa		6/17/05			MM	2/1	C	92194	C	2 of 2

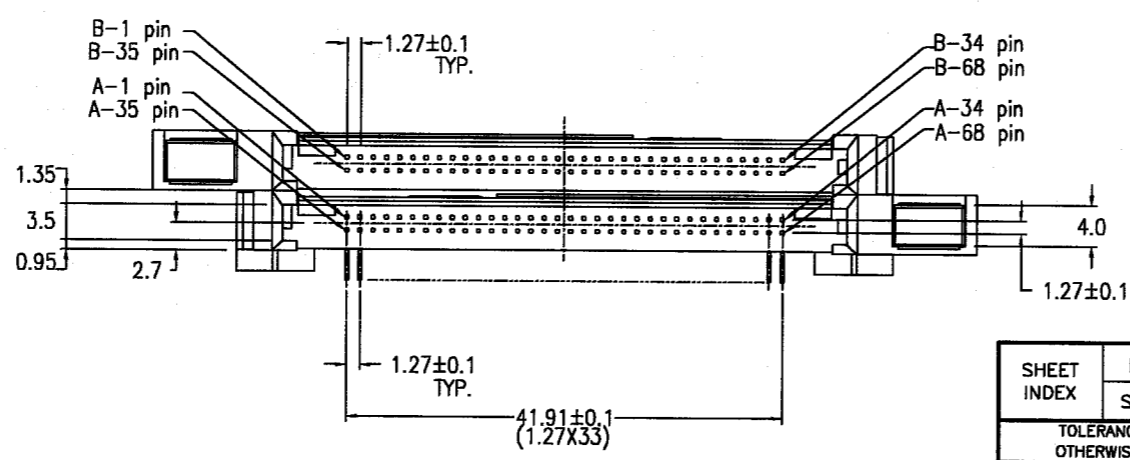
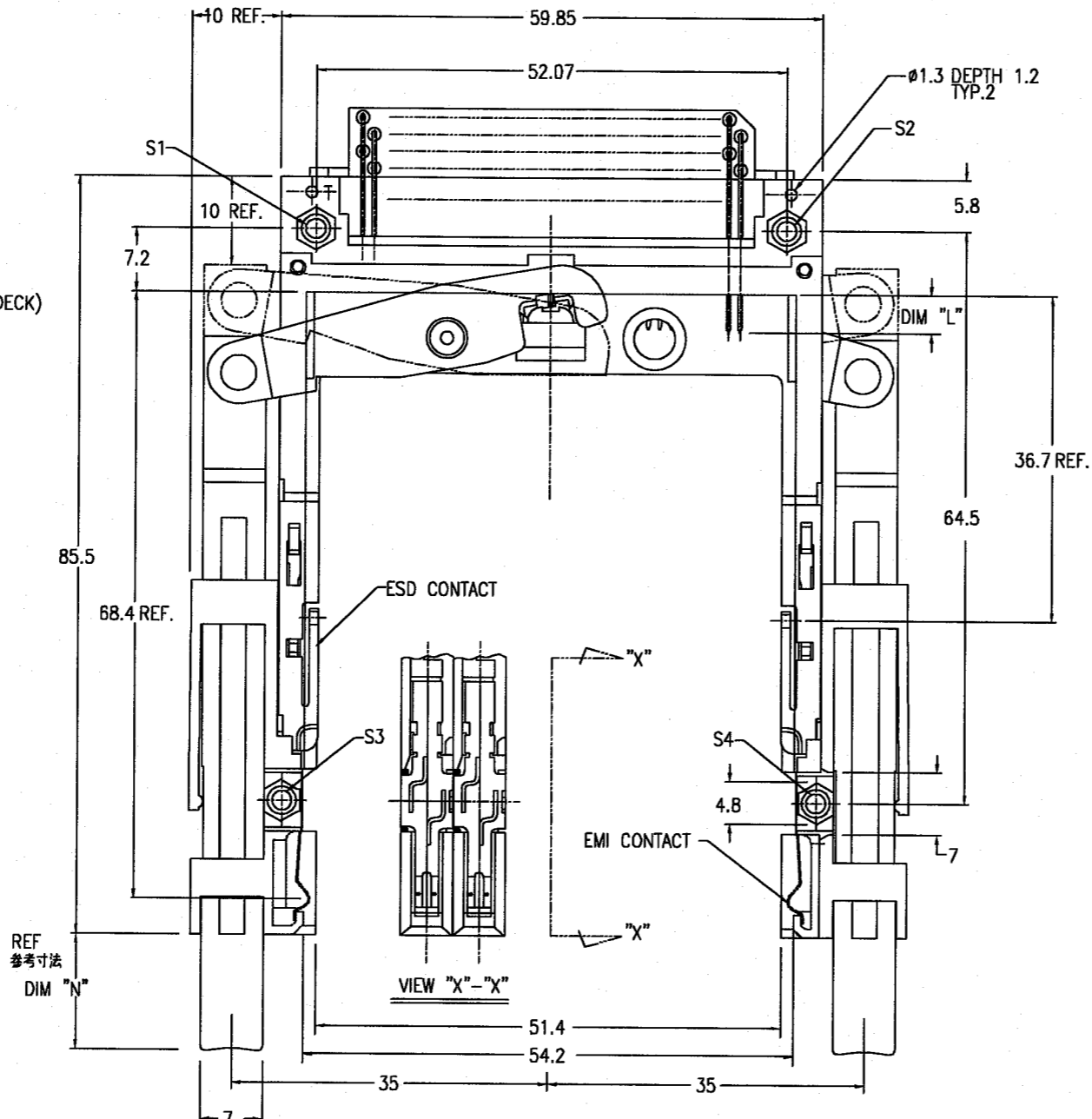
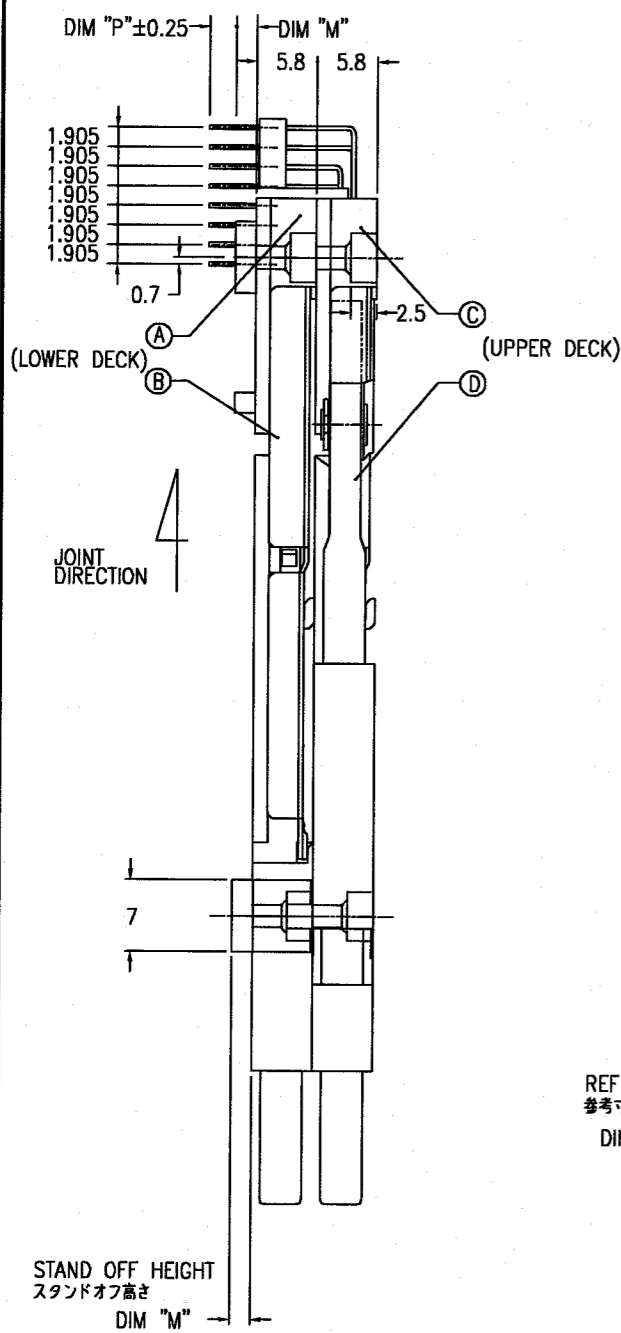


68BP DOUBLE EJECTOR HEADER ASSY FOR TYPE I/II/III  
 PRODUCT FAMILY SANF Header PCMCIA  
 SCALE 2/1 C 92194 REV C 2 of 2

DF-003A REV F  
 DO NOT SCALE. PRINT THIS INFORMATION IS CONFIDENTIAL AND IS DISCLOSED TO YOU ON CONDITION THAT NO FURTHER DISCLOSURE IS MADE BY YOU TO OTHER THAN FCI PERSONNEL WITHOUT WRITTEN AUTHORIZATION FROM FCI JAPAN K.K.

PRODUCT NO.	
92194-100CA	92194-100CALF
92194-120CA	92194-120CALF

REVISIONS				
REV	DESCRIPTION	ECN	BY	DATE
A	RELEASED	J30022	N.T.	1/19/93
B	REVISED	J40349	M.K.	1/24/95
C	REVISED	J05-0367	M.H.	6/17/05

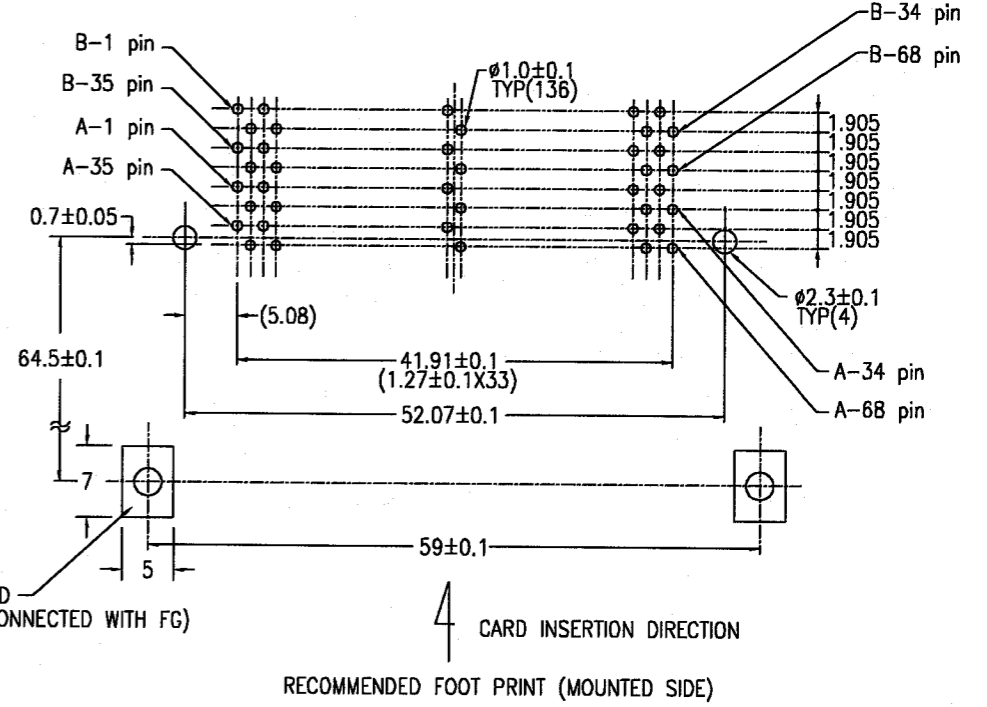


- NOTE
- EJECT FORCE 3.5kg MAX.
  - ASSY PROCESS
    - TO MOUNT PART (A), (C) ON PWB WITH SCREW (S1,S2) AND SOLDER.
    - TO JOINT PART (B), (D) INTO PART (A), (C) THEN FIX PART (B), (D) WITH 2 SCREWS (S3,S4).
  - EJECT TRAVEL 8.0mm

- (4) MATERIAL
- PART (A), (C) (HEADER ASSY)
    - PLASTIC : HOUSING : LCP UL94V-0 BLACK
    - LOCATOR : G.F.6/6 NYLON UL94V-0 BLACK
    - PIN : PHOSPHOR BRONZE
  - PART (B), (D) (EJECT MECHANISM ASSY)
    - PLASTIC : GUIDE : POLYOHTHARAMID UL94V-0 BLACK
    - PUSH ROD : POLYOHTHARAMID UL94V-0 BLACK
    - PLATE : STAINLESS
    - EMI CONTACT : PHOSPHOR BRONZE
- (5) -1 FINISH (PIN)
- UNDER PLATING : 0.5 μm MIN. Ni
  - CONTACT AREA : 0.1 μm MIN. GOLD OVER 0.5 μm MIN. Pd-Ni.
  - SOLDER TAIL : 2.5 μm MIN. Sn-Pb.
- (5) -2 FINISH (PIN) (FOR -\*\*\*\*\*LF)
- UNDER PLATING : 0.5 μm MIN. Ni
  - CONTACT AREA : 0.1 μm MIN. GOLD OVER 0.5 μm MIN. Pd-Ni.
  - SOLDER TAIL : 2.5 μm MIN. Sn.

4.25±0.1	3.5±0.1	5.0±0.1
OTHERS	36.67	35.51.68

- GENERAL TOLERANCE : ±0.3
- SEE SHEET 1 REGARDING COMPONENTS

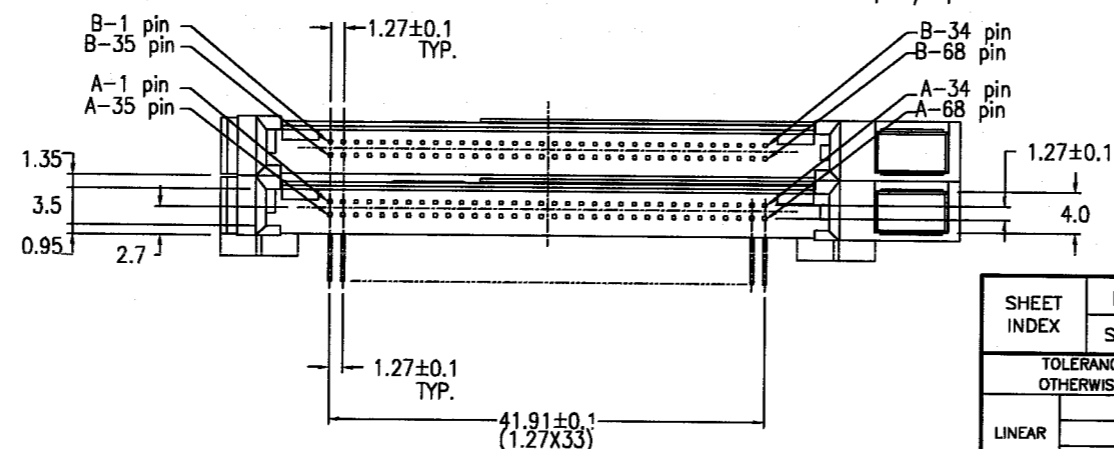
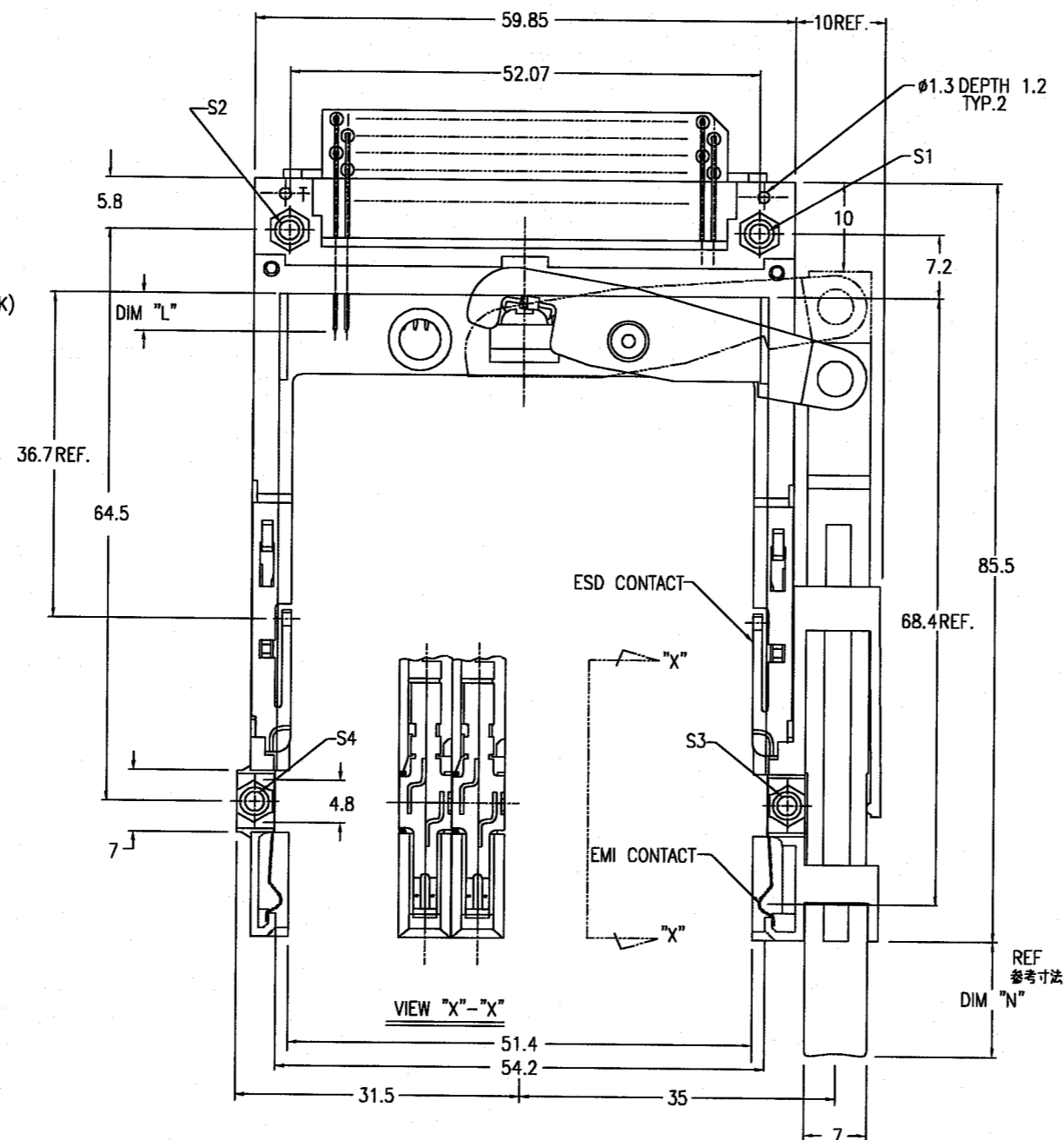
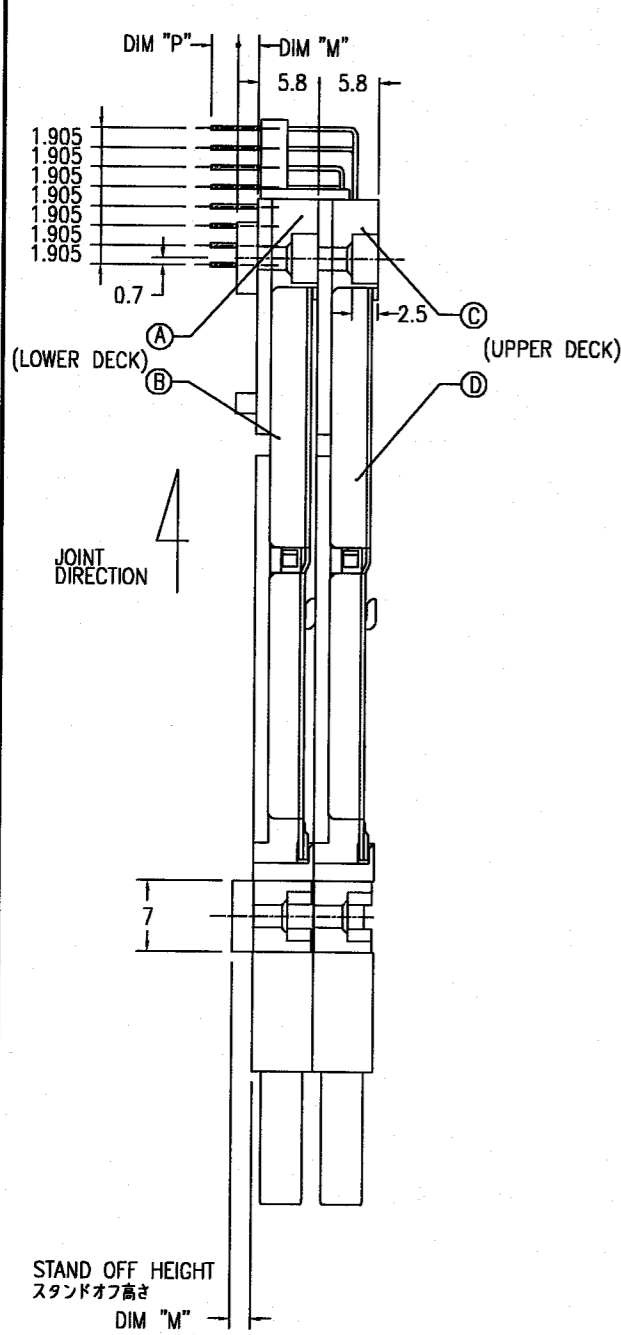


DF-003A REV F  
DO NOT SCALE PRINT THIS INFORMATION IS CONFIDENTIAL AND IS DISCLOSED TO YOU ON CONDITION THAT NO FURTHER DISCLOSURE IS MADE BY YOU TO OTHER THAN FCI PERSONNEL WITHOUT WRITTEN AUTHORIZATION FROM FCI JAPAN K.K.

SHEET INDEX	ISSUE SH. NO.												
		TOLERANCES UNLESS OTHERWISE SPECIFIED	MAT	DR <i>M. Kasagawa</i>	DATE 6/17/05	CUSTOMER COPY	TITLE 68P DOUBLE EJECTOR HEADER ASSY FOR TYPE I/II/III			PRODUCT FAMILY SANF Header PCMCIA CODE JP			
		LINEAR	SEE NOTE (4)	ENGR <i>M. Kasagawa</i>	6/17/05	THIRD ANGLE PROJ	SCALE 2/1	SIZE C	DWG. NO. 92194	REV C	SHEET 3of		
		ANGLES	SEE NOTE (5)	CHK <i>M. Kasagawa</i>	6/20/05	UNIT MM							

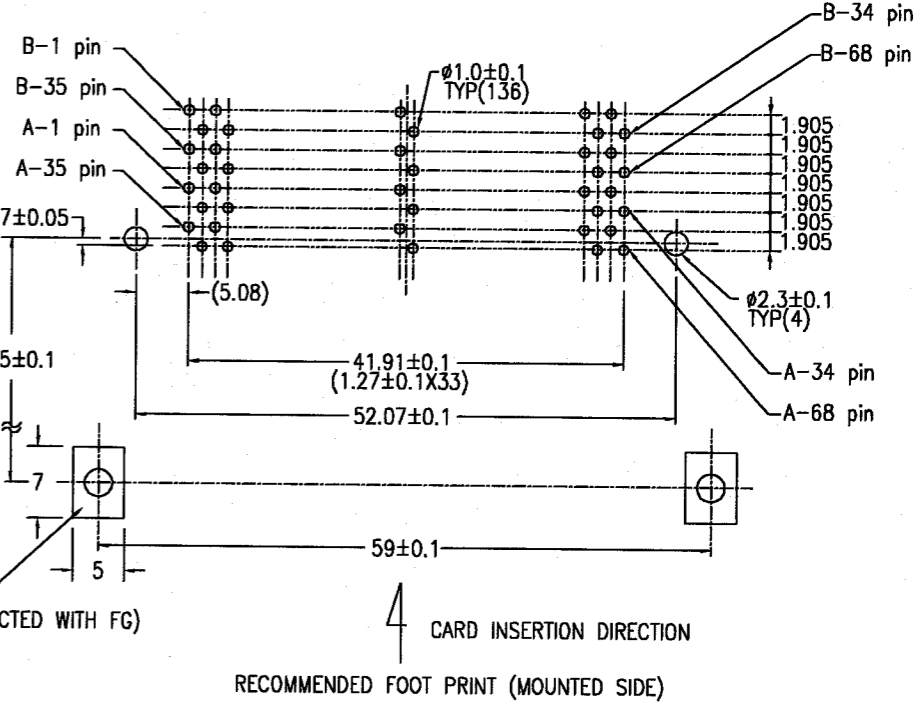
PART NO.	
92194-200CA	92194-200CALF
92194-200FA	92194-200FALF
92194-220CA	92194-220CALF

REVISIONS				
REV	DESCRIPTION	ECN	BY	DATE
A	RELEASED	J30022	N.T	1/19/93
B	REVISED	J40349	M.K	1/23/95
C	REVISED	v04-0820	M.K	3/16/04
D	REVISED	j05-0367	M.H	6/17/05



- NOTE
- EJECT FORCE 3.5kg MAX.
  - ASSY PROCESS
    - TO MOUNT PART (A), (C) ON PWB WITH SCREW (S1,S2) AND SOLDER.
    - TO JOINT PART (B), (D) INTO PART (A) (C) THEN FIX PART (B), (D) WITH 2 SCREWS (S3,S4).
  - EJECT TRAVEL 8.0mm
  - MATERIAL
    - PART (A), (C) (HEADER ASSY)
      - PLASTIC : HOUSING : LCP UL94V-0 BLACK
      - LOCATOR : G.F.6/6 NYLON UL94V-0 BLACK
      - PIN : PHOSPHOR BRONZE
    - PART (B), (D) (EJECT MECHANISM ASSY)
      - PLASTIC : GUIDE : POLYOTHARAMID UL94V-0 BLACK
      - PUSH ROD : POLYOTHARAMID UL94V-0 BLACK
      - PLATE : STAINLESS
      - EMI CONTACT : PHOSPHOR BRONZE
  - FINISH (PIN)
    - FINISH (PIN)
      - UNDER PLATING : 0.5 µm MIN. Ni
      - CONTACT AREA : 0.1 µm MIN. GOLD OVER 0.5 µm MIN. Pd-Ni.
      - SOLDER TAIL : 2.5 µm MIN. Sn-Pb.
    - FINISH (PIN) (FOR -\*\*\*\*\*LF)
      - UNDER PLATING : 0.5 µm MIN. Ni
      - CONTACT AREA : 0.1 µm MIN. GOLD OVER 0.5 µm MIN. Pd-Ni.
      - SOLDER TAIL : 2.5 µm MIN. Sn.
  - DIM "L"

4.25±0.1	3.5±0.1	5.0±0.1
OTHERS	36.67	1.17, 34 35, 51, 68



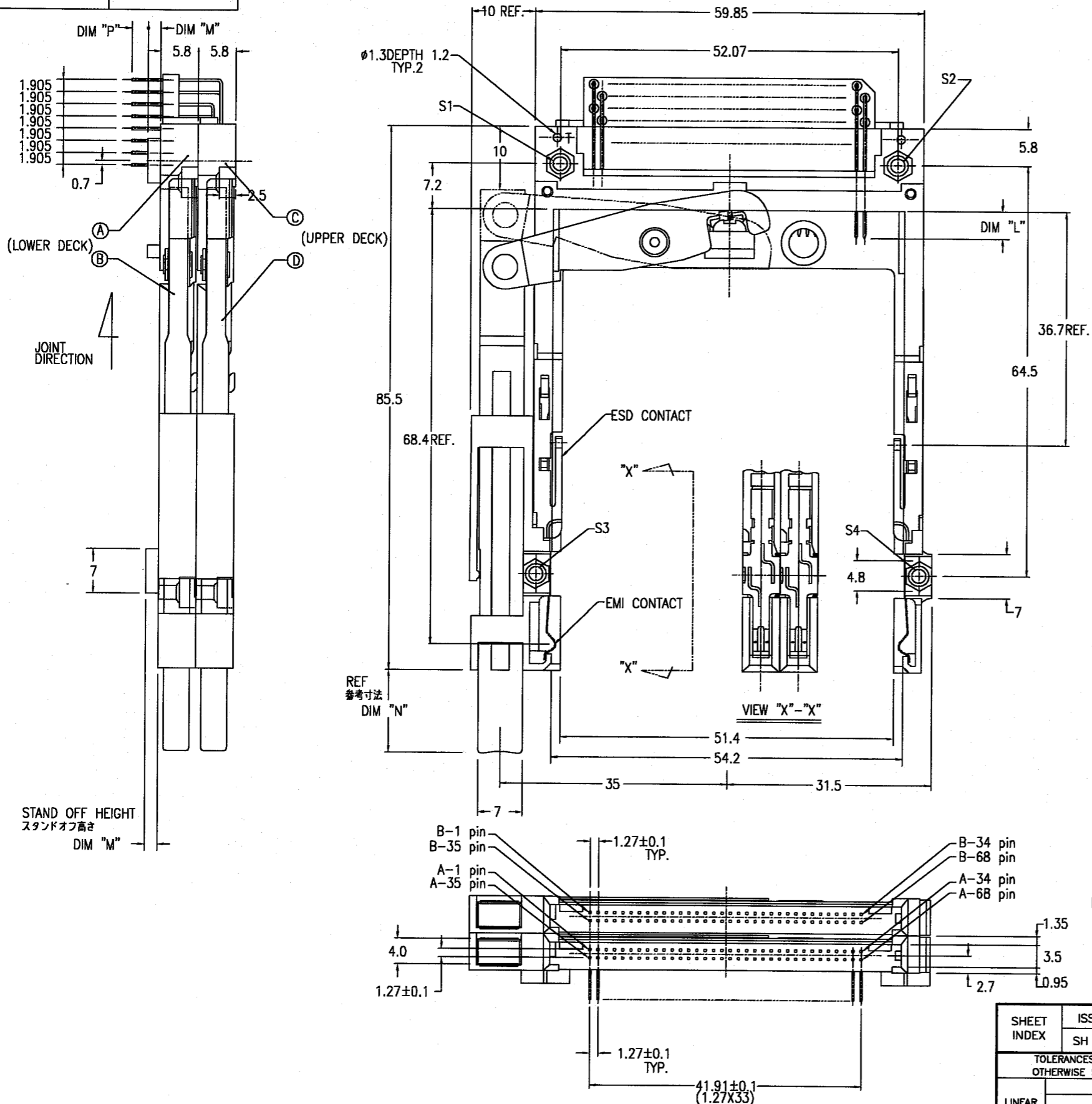
DF-003A REV F  
DO NOT SCALE PRINT THIS INFORMATION IS CONFIDENTIAL AND IS DISCLOSED TO YOU ON CONDITION THAT NO FURTHER DISCLOSURE IS MADE BY YOU TO OTHER THAN FCI PERSONNEL WITHOUT WRITTEN AUTHORIZATION FROM FCI JAPAN K.K.

SHEET INDEX	ISSUE SH NO.	TOLERANCES UNLESS OTHERWISE SPECIFIED		MAT	DR	ENGR	DATE	CUSTOMER COPY	TITLE
					M. Hasegawa	M. Hasegawa	6/17/05		68P DOUBLE EJECTOR HEADER ASSY FOR TYPE I / II / III
					M. Hasegawa	M. Hasegawa	6/17/05		PRODUCT FAMILY SANF Header PCMCIA
					CHK	M. Hasegawa	6/20/05		SCALE 2/1
					APPD	M. Hasegawa	6/20/05		SIZE C
									DWG. NO. 92194
									REV D
									SHEET 4 of



PRODUCT NO.	
92194-300CA	92194-300CALF
92194-320CA	92194-320CALF
92194-320FA	92194-320FALF

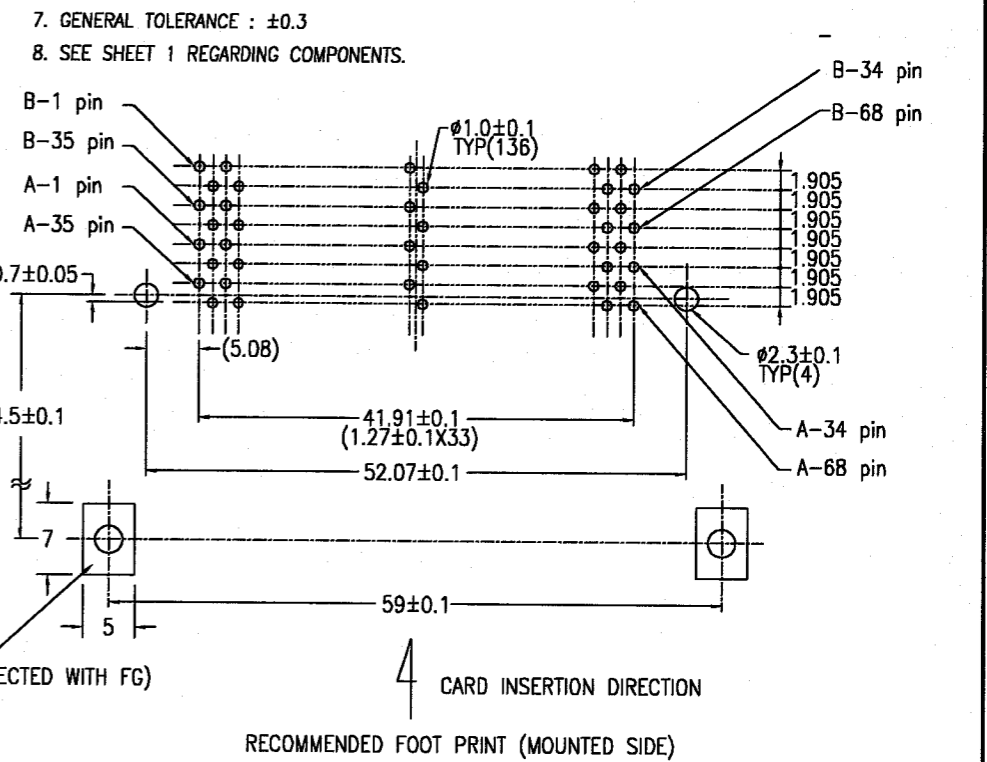
REVISIONS				
REV	DESCRIPTION	ECN	BY	DATE
A	RELEASED	J30022	N.T	1/19/93
B	REVISED	J40349	M.K	1/23/95
C	REVISED	N90076	M.K	7/22/99
D	REVISED	J05-0367	M.H	6/17/05



NOTE

- EJECT FORCE 3.5kg MAX.
- ASSY PROCESS
  - TO MOUNT PART (A), (C) ON PWB WITH SCREW (S1,S2) AND SOLDER.
  - TO JOINT PART (B), (D) INTO PART (A), (C) THEN FIX PART (B), (D) WITH 2 SCREWS (S3,S4).
- EJECT TRAVEL 8.0mm
- MATERIAL
  - PART (A), (C) (HEADER ASSY)
    - PLASTIC : HOUSING : LCP UL94V-0 BLACK
    - LOCATOR : G.F.6/6 NYLON UL94V-0 BLACK
    - PIN : PHOSPHOR BRONZE
  - PART (B), (D) (EJECT MECHANISM ASSY)
    - PLASTIC : GUIDE : POLYETHYLENE TEREPHTHALATE UL94V-0 BLACK
    - PUSH ROD : POLYETHYLENE TEREPHTHALATE UL94V-0 BLACK
    - PLATE : STAINLESS
    - EMI CONTACT : PHOSPHOR BRONZE
- FINISH (PIN)
  - FINISH (PIN)
    - UNDER PLATING : 0.5 μm MIN. Ni
    - CONTACT AREA : 0.1 μm MIN. GOLD OVER 0.5 μm MIN. Pd-Ni.
    - SOLDER TAIL : 2.5 μm MIN. Sn-Pb.
  - FINISH (PIN) (FOR -\*\*\*\*\*LF)
    - UNDER PLATING : 0.5 μm MIN. Ni
    - CONTACT AREA : 0.1 μm MIN. GOLD OVER 0.5 μm MIN. Pd-Ni.
    - SOLDER TAIL : 2.5 μm MIN. Sn.

4.25±0.1	3.5±0.1	5.0±0.1
OTHERS	36.67	1.17, 3.4 35.51, 6.8



DF-003A REV F  
DO NOT SCALE PRINT THIS INFORMATION IS CONFIDENTIAL AND IS DISCLOSED TO YOU ON CONDITION THAT NO FURTHER DISCLOSURE IS MADE BY YOU TO OTHER THAN FCI PERSONNEL WITHOUT WRITTEN AUTHORIZATION FROM FCI JAPAN K.K.

SHEET INDEX	ISSUE	DATE		CUSTOMER COPY	TITLE	CODE JP
	SH NO.	6/17/05			68P DOUBLE EJECTOR HEADER ASSY FOR TYPE I/II/III	
TOLERANCES UNLESS OTHERWISE SPECIFIED		MAT	DR	ENGR	CHK	APPD
		SEE NOTE ④	M. Kasagawa	M. Kasagawa	M. Kasagawa	M. Kasagawa
LINEAR		FINISH	DATE	THIRD ANGLE PROJ	UNIT	SCALE
		SEE NOTE ⑤	6/20/05		MM	2/1 C
ANGLES		DATE		UNIT	DWG. NO.	REV SHEET
		6/20/05		MM	92194	D 50F

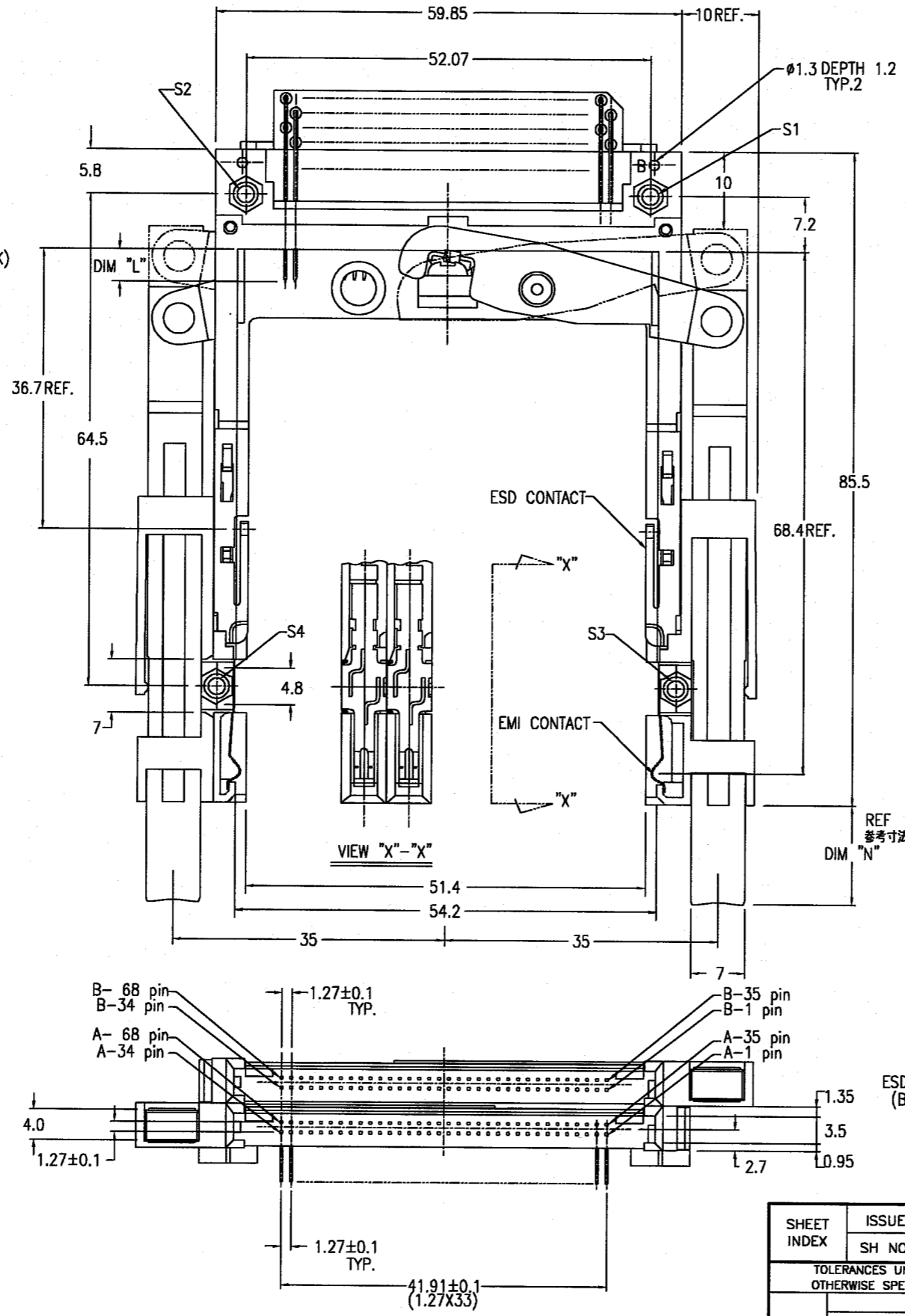
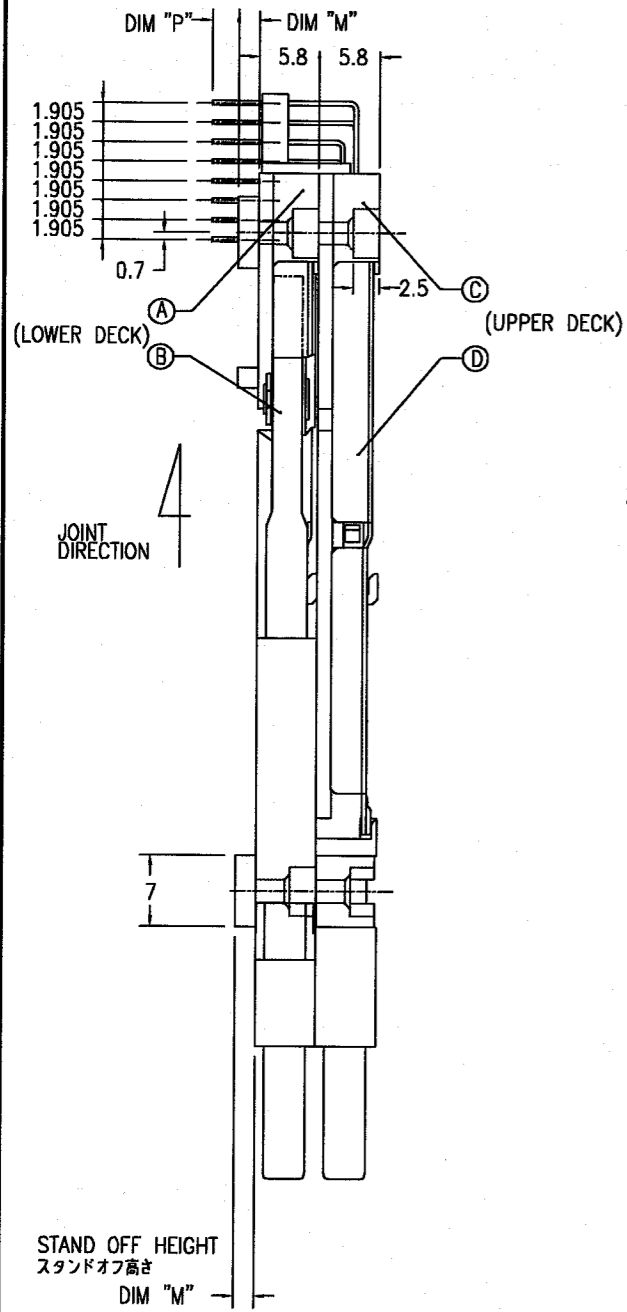
**FCI**

PRODUCT FAMILY SANF Header PCMCIA

SCALE SIZE DWG. NO. REV SHEET  
2/1 C 92194 D 50F

PART NO.	
92194-500CA	92194-500CALF
92194-500FA	92194-500FALF
92194-520CA	92194-520CALF

REVISIONS				
REV	DESCRIPTION	ECN	BY	DATE
A	RELEASED	J30022	N.T	1/19/93
B	REVISED	J40349	M.K	1/23/95
C	REVISED	V60956	M.K	7/29/96
D	REVISED	J05-0367	M.H	6/17/05



- NOTE
- EJECT FORCE 3.5kg MAX.
  - ASSY PROCESS
    - TO MOUNT PART ④, ⑤ ON PWB WITH SCREW (S1,S2) AND SOLDER.
    - TO JOINT PART ③, ⑥ INTO PART ④, ⑤ THEN FIX PART ③, ⑥ WITH 2 SCREWS (S3,S4).
  - EJECT TRAVEL 8.0mm

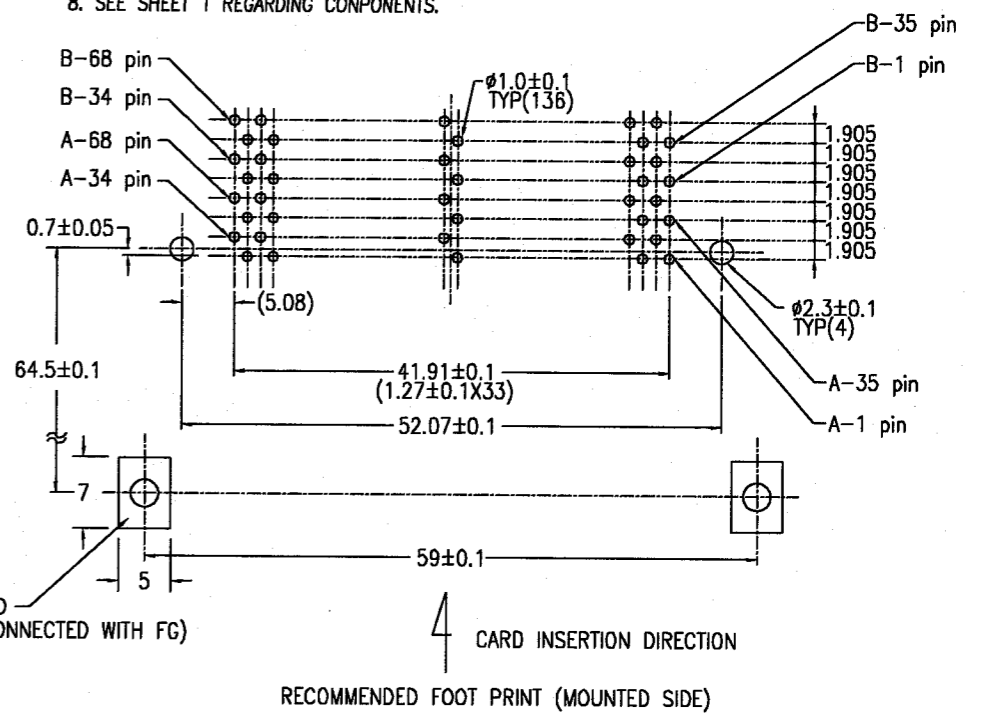
- ④ MATERIAL
- PART ④, ⑤ (HEADER ASSY)
    - PLASTIC : HOUSING : LCP UL94V-0 NATURAL
    - LOCATOR : G.F.6/6 NYLON UL94V-0 BLACK
    - PIN : PHOSPHOR BRONZE
  - PART ③, ⑥ (EJECT MECHANISM ASSY)
    - PLASTIC : GUIDE : POLYETHYLETHERAZAMIDE UL94V-0 BLACK
    - PUSH ROD : POLYETHYLETHERAZAMIDE UL94V-0 BLACK
    - PLATE : STAINLESS
    - EMI CONTACT : PHOSPHOR BRONZE

- ⑤ -1 FINISH (PIN)
- UNDER PLATING : 0.5 μm MIN. Ni
  - CONTACT AREA : 0.1 μm MIN. GOLD OVER 0.5 μm MIN. Pd-Ni.
  - SOLDER TAIL : 2.5 μm MIN. Sn-Pb.
- ⑤ -2 FINISH (PIN) (FOR -\*\*\*\*\*LF)
- UNDER PLATING : 0.5 μm MIN. Ni
  - CONTACT AREA : 0.1 μm MIN. GOLD OVER 0.5 μm MIN. Pd-Ni.
  - SOLDER TAIL : 2.5 μm MIN. Sn.

6. DIM "L"

4.25±0.1	3.5±0.1	5.0±0.1
OTHERS	36.67	35.51.68

- GENERAL TOLERANCE : ±0.3
- SEE SHEET 1 REGARDING COMPONENTS.

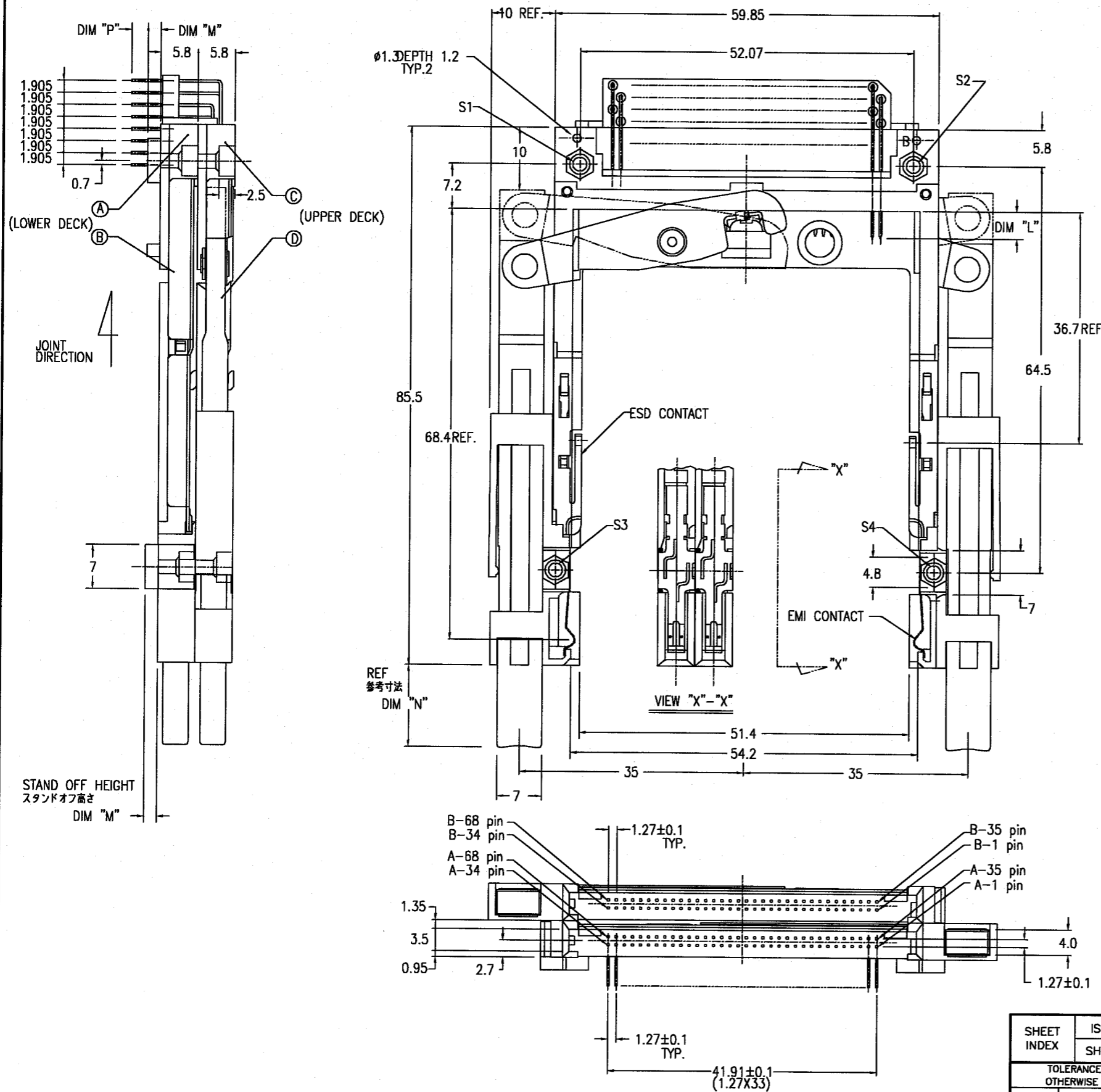


DF-003A REV F  
DO NOT SCALE PRINT THIS INFORMATION IS CONFIDENTIAL AND IS DISCLOSED TO YOU ON CONDITION THAT NO FURTHER DISCLOSURE IS MADE BY YOU TO OTHER THAN FCI PERSONNEL WITHOUT WRITTEN AUTHORIZATION FROM FCI JAPAN K.K.

SHEET INDEX	ISSUE SH NO.	TOLERANCES UNLESS OTHERWISE SPECIFIED		MAT	DR <i>M. Hasegawa</i> 6/17/05	DATE	CUSTOMER COPY	TITLE 68P DOUBLE EJECTOR HEADER ASSY FOR TYPE I/II/III
				SEE NOTE ④	ENGR <i>M. Hasegawa</i> 6/17/05			PRODUCT FAMILY SANF Header PCMCIA CODE JP
				SEE NOTE ⑤	CHK <i>M. Hasegawa</i> 6/26/05		THIRD ANGLE PROJ	SCALE 2/1 SIZE C DWG. NO. 92194 REV D SHEET 6 OF 6
					APPD <i>M. Hasegawa</i> 6/26/05		UNIT MM	

PART NO.	
92194-600CA	92194-600CALF
92194-620CA	92194-620CALF

REVISIONS				
REV	DESCRIPTION	ECN	BY	DATE
A	RELEASED	J30022	N.T	1/19/93
B	REVISED	J40349	M.K	1/23/95
C	REVISED	J05-0367	M.H	5/17/05



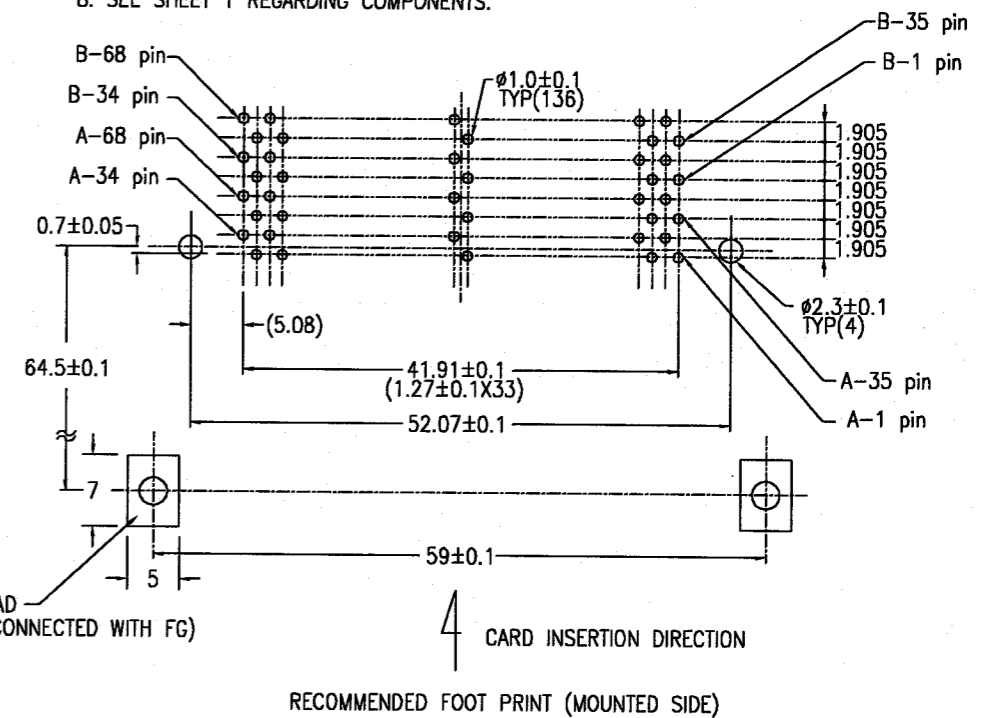
NOTE

- EJECT FORCE 3.5kg MAX.
- ASSY PROCESS
  - TO MOUNT PART ④, ⑤ ON PWB WITH SCREW (S1,S2) AND SOLDER.
  - TO JOINT PART ③, ⑥ INTO PART ④, ⑤ THEN FIX PART ③, ⑥ WITH 2 SCREWS (S3,S4).
  - EJECT TRAVEL 8.0mm
- MATERIAL
  - PART ④, ⑤ (HEADER ASSY)
    - PLASTIC : HOUSING : LCP UL94V-0 NATURAL
    - LOCATOR : G.F.6/6 NYLON UL94V-0 BLACK
    - PIN : PHOSPHOR BRONZE
  - PART ③, ⑥ (EJECT MECHANISM ASSY)
    - PLASTIC : GUIDE : POLYETHYLENE TEREPHTHALATE UL94V-0 BLACK
    - PUSH ROD : POLYETHYLENE TEREPHTHALATE UL94V-0 BLACK
    - PLATE : STAINLESS
    - EMI CONTACT : PHOSPHOR BRONZE
- FINISH (PIN)
  - FINISH (PIN)
    - UNDER PLATING : 0.5 μm MIN. Ni
    - CONTACT AREA : 0.1 μm MIN. GOLD OVER 0.5 μm MIN. Pd-Ni.
    - SOLDER TAIL : 2.5 μm MIN. Sn-Pb.
  - FINISH (PIN) (FOR -\*\*\*\*LF)
    - UNDER PLATING : 0.5 μm MIN. Ni
    - CONTACT AREA : 0.1 μm MIN. GOLD OVER 0.5 μm MIN. Pd-Ni.
    - SOLDER TAIL : 2.5 μm MIN. Sn.

6. DIM "L"

4.25±0.1	3.5±0.1	5.0±0.1
OTHERS	36.67	35.51.68

- GENERAL TOLERANCE : ±0.3
- SEE SHEET 1 REGARDING COMPONENTS.



DF-003A REV F

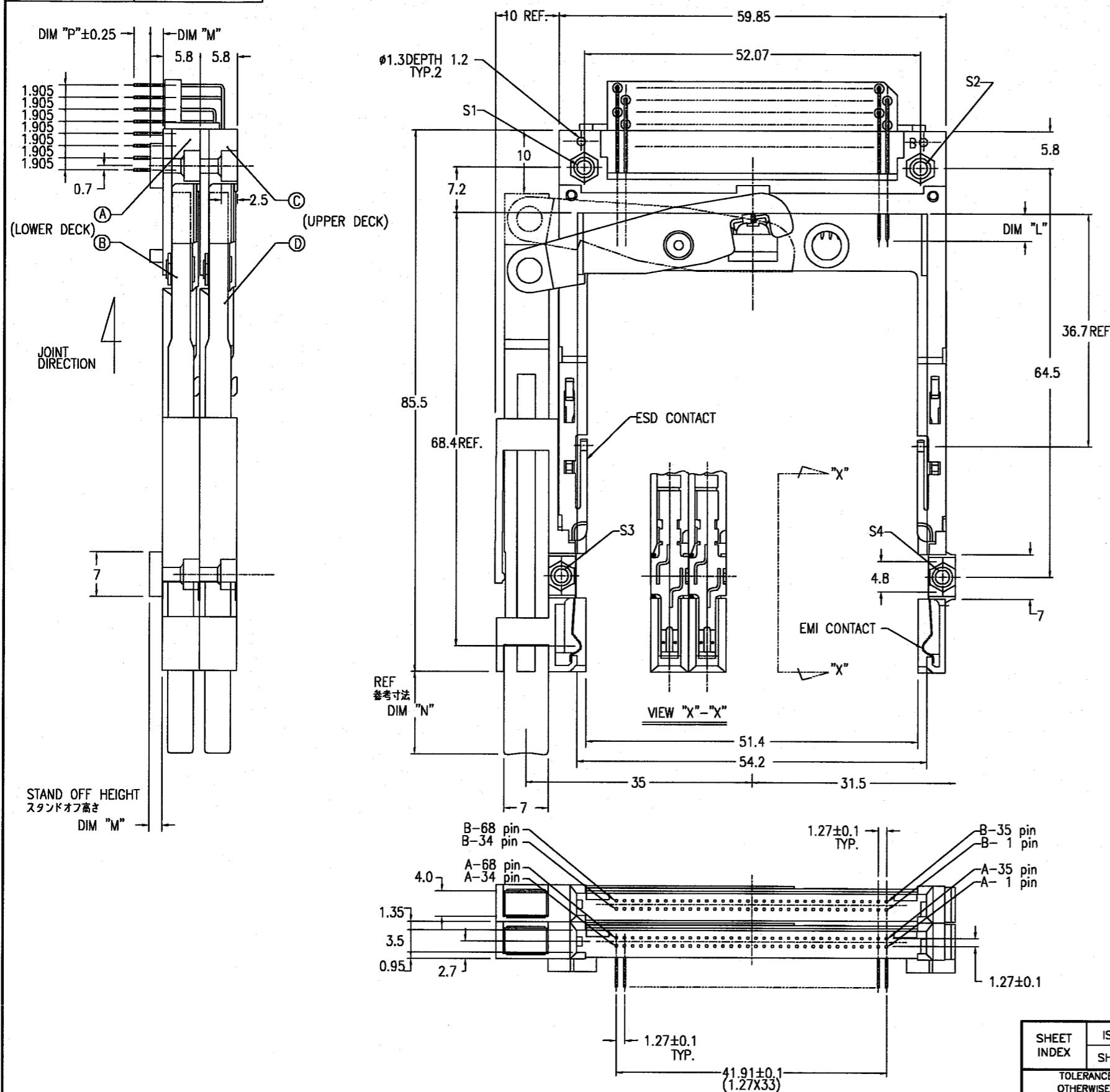
DO NOT SCALE. PRINT THIS INFORMATION IS CONFIDENTIAL AND IS DISCLOSED TO YOU ON CONDITION THAT NO FURTHER DISCLOSURE IS MADE BY YOU TO OTHER THAN FCI PERSONNEL WITHOUT WRITTEN AUTHORIZATION FROM FCI JAPAN K.K.

SHEET INDEX	ISSUE SH. NO.	TOLERANCES UNLESS OTHERWISE SPECIFIED		MAT	DR <i>M. Hasegawa</i>	DATE 6/17/05	CUSTOMER COPY	TITLE 68P DOUBLE EJECTOR HEADER ASSY FOR TYPE I/II/III
LINEAR		SEE NOTE ④	ENG. <i>M. Hasegawa</i>	FINISH	CHK <i>M. Hasegawa</i>	6/20/05	THIRD ANGLE PROJ	PRODUCT FAMILY SANF Header PCMCIA CODE JP
ANGLES		SEE NOTE ⑤	APPD <i>H. Takahashi</i>		DATE 6/20/05		UNIT MM INCH	SCALE 2/1 SIZE C DWG. NO. 92194 REV SHEET C 7 of



PART NO.	
92194-700CA	92194-700CALF
92194-720CA	92194-720CALF

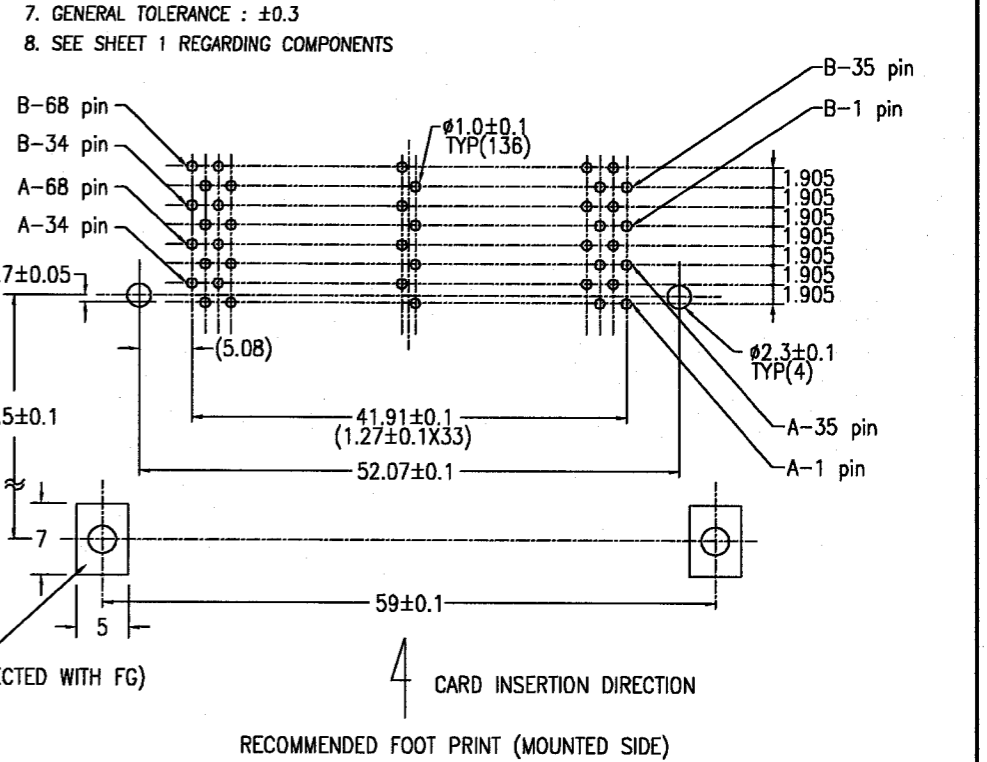
REVISIONS				
REV	DESCRIPTION	ECN	BY	DATE
A	RELEASED	J30022	N.T	1/19/93
B	REVISED	J30062	N.T	3/2/93
C	REVISED	J40349	M.K	1/23/95
D	REVISED	J05-0367	M.H	6/17/05



NOTE

- EJECT FORCE 3.5kg MAX.
- ASSY PROCESS
  - TO MOUNT PART ④, ⑤ ON PWB WITH SCREW (S1,S2) AND SOLDER.
  - TO JOINT PART ③, ④ INTO PART ①, ② THEN FIX PART ③, ④ WITH 2 SCREWS (S3,S4).
- EJECT TRAVEL 8.0mm
- MATERIAL
  - PART ①, ② (HEADER ASSY)
    - PLASTIC : HOUSING : LCP UL94V-0 NATURAL
    - LOCATOR : G.F.6/6 NYLON UL94V-0 BLACK
    - PIN : PHOSPHOR BRONZE
  - PART ③, ④ (EJECT MECHANISM ASSY)
    - PLASTIC : GUIDE : POLYETHYLETHERAZOLE UL94V-0 BLACK
    - PUSH ROD : POLYETHYLETHERAZOLE UL94V-0 BLACK
    - PLATE : STAINLESS
    - EMI CONTACT : PHOSPHOR BRONZE
- FINISH (PIN)
  - FINISH (PIN)
    - UNDER PLATING : 0.5 μm MIN. Ni
    - CONTACT AREA : 0.1 μm MIN. GOLD OVER 0.5 μm MIN. Pd-Ni
    - SOLDER TAIL : 2.5 μm MIN. Sn-Pb.
  - FINISH (PIN) (FOR -\*\*\*\*LF)
    - UNDER PLATING : 0.5 μm MIN. Ni
    - CONTACT AREA : 0.1 μm MIN. GOLD OVER 0.5 μm MIN. Pd-Ni
    - SOLDER TAIL : 2.5 μm MIN. Sn.

4.25±0.1	3.5±0.1	5.0±0.1
OTHERS	36.67	1.17, 34, 35, 51, 68



DF-003A REV F  
DO NOT SCALE PRINT THIS INFORMATION IS CONFIDENTIAL AND IS DISCLOSED TO YOU ON CONDITION THAT NO FURTHER DISCLOSURE IS MADE BY YOU TO OTHER THAN FCI PERSONNEL WITHOUT WRITTEN AUTHORIZATION FROM FCI JAPAN K.K.

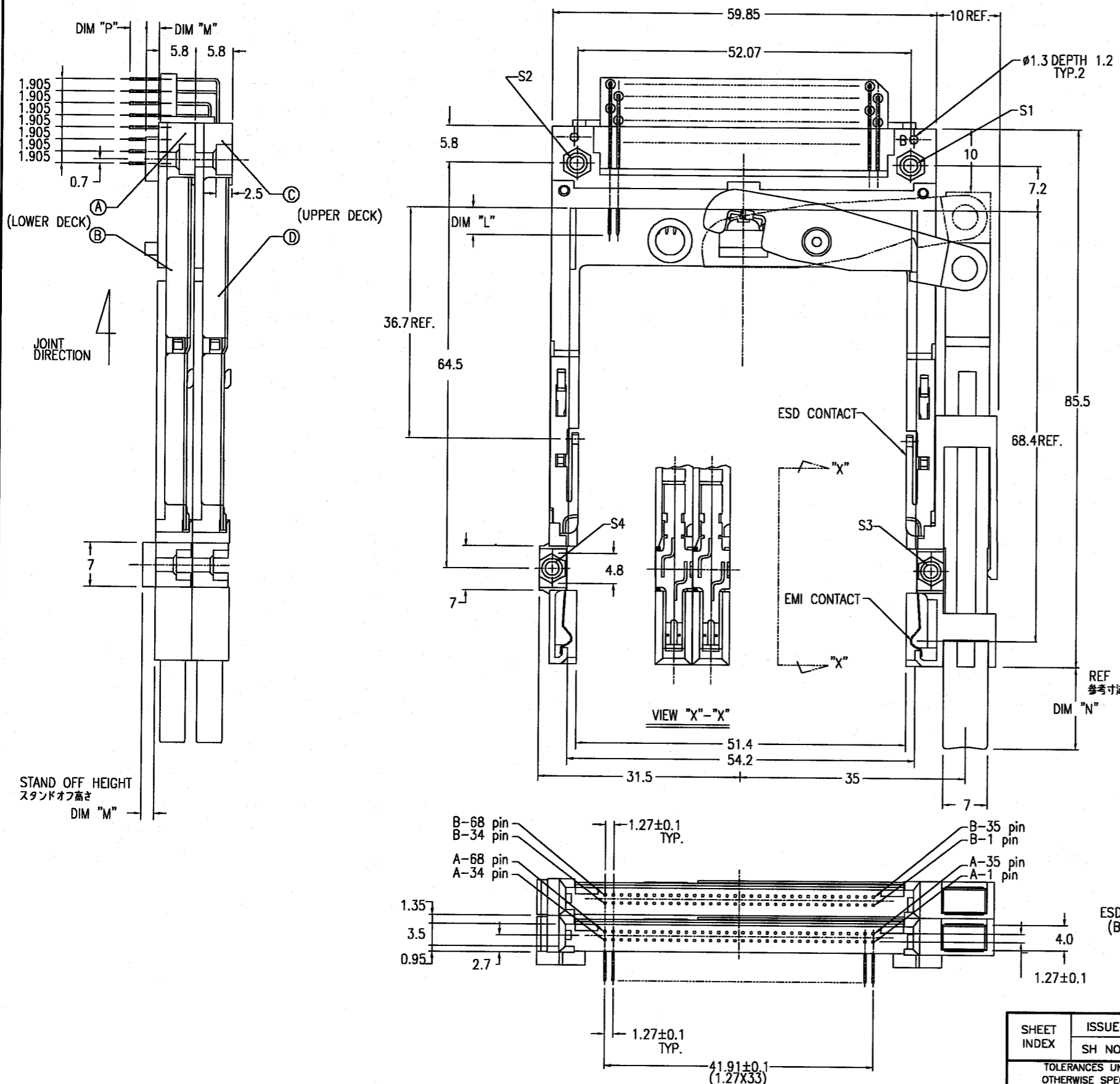
SHEET INDEX	ISSUE SH NO.	TOLERANCES UNLESS OTHERWISE SPECIFIED		MAT	DR <i>M. Hasegawa</i>	DATE 6/17/05	CUSTOMER COPY	TITLE 68P DOUBLE EJECTOR HEADER ASSY FOR TYPE I / II / III
LINEAR		SEE NOTE ④	FINISH	ENG <i>M. Hasegawa</i>	DATE 6/17/05	THIRD ANGLE PROJ	PRODUCT FAMILY SANF Header PCMCIA	CODE JF
ANGLES		SEE NOTE ⑤	APPD <i>M. Hasegawa</i>	DATE 6/20/05	UNIT MM	SCALE 2/1	SIZE C	DWG. NO. 92194
					DATE 6/20/05			REV D
								SHEET 8 OF





PART NO.	
92194-800CA	92194-800CALF
92194-820CA	92194-820CALF

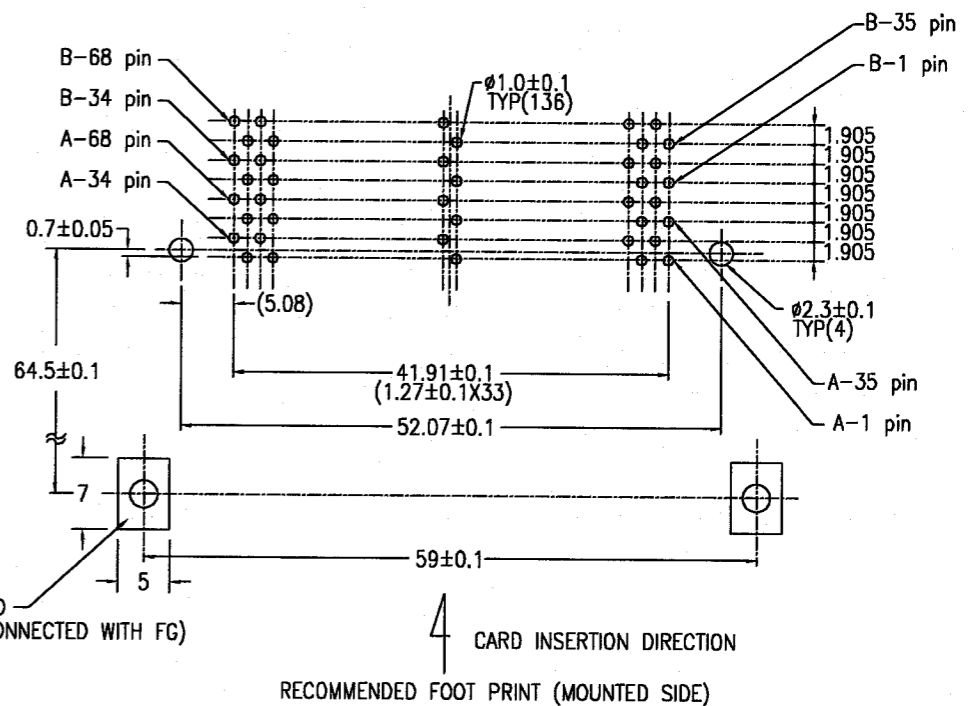
REVISIONS				
REV	DESCRIPTION	ECN	BY	DATE
A	RELEASED		N.T	1/19/92
B	REVISED	J40349	M.K	1/23/95
C	REVISED	J05-0367	M.H	6/17/05



NOTE

- EJECT FORCE 3.5kg MAX.
- ASSY PROCESS
  - TO MOUNT PART ④, ⑤ ON PWB WITH SCREW (S1,S2) AND SOLDER.
  - TO JOINT PART ③, ⑥ INTO PART ④, ⑤ THEN FIX PART ③, ⑥ WITH 2 SCREWS (S3,S4).
- EJECT TRAVEL 8.0mm
- MATERIAL
  - PART ④, ⑤ (HEADER ASSY)
    - PLASTIC : HOUSING : LCP UL94V-0 NATURAL
    - LOCATOR : G.F.6/6 NYLON UL94V-0 BLACK
    - PIN : PHOSPHOR BRONZE
  - PART ③, ⑥ (EJECT MECHANISM ASSY)
    - PLASTIC : GUIDE : POLYOHTHARAMID UL94V-0 BLACK
    - PUSH ROD : POLYOHTHARAMID UL94V-0 BLACK
    - PLATE : STAINLESS
    - EMI CONTACT : PHOSPHOR BRONZE
- 1 FINISH (PIN)
  - UNDER PLATING : 0.5 μm MIN. Ni
  - CONTACT AREA : 0.1 μm MIN. GOLD OVER 0.5 μm MIN. Pd-Ni.
  - SOLDER TAIL : 2.5 μm MIN. Sn-Pb.
- 2 FINISH (PIN) (FOR -\*\*\*\*LF)
  - UNDER PLATING : 0.5 μm MIN. Ni
  - CONTACT AREA : 0.1 μm MIN. GOLD OVER 0.5 μm MIN. Pd-Ni.
  - SOLDER TAIL : 2.5 μm MIN. Sn.
- DIM "L"
 

4.25±0.1	3.5±0.1	5.0±0.1
OTHERS	36.67	1.17, 34, 35, 51, 68
- GENERAL TOLERANCE : ±0.3
- SEE SHEET 1 REGARDING COMPONENTS.



DF-003A REV F  
DO NOT SCALE PRINT THIS INFORMATION IS CONFIDENTIAL AND IS DISCLOSED TO YOU ON CONDITION THAT NO FURTHER DISCLOSURE IS MADE BY YOU TO OTHER THAN FCI PERSONNEL WITHOUT WRITTEN AUTHORIZATION FROM FCI JAPAN K.K.

SHEET INDEX	ISSUE SH NO.	TOLERANCES UNLESS OTHERWISE SPECIFIED	MAT	DR <i>M. Hasegawa</i> 6/17/05	DATE	CUSTOMER COPY	TITLE 68P DOUBLE EJECTOR HEADER ASSY FOR TYPE I/II/III
LINEAR	SEE NOTE ④	FINISH	ENGR <i>M. Hasegawa</i> 6/17/05	CHK <i>M. Hasegawa</i> 6/20/05	THIRD ANGLE PROJ	PRODUCT FAMILY SANF Header PCMCIA	CODE JP
ANGLES	SEE NOTE ⑤	APPD <i>H. Takahara</i> 6/20/05	UNIT MM INCH	SCALE 2/1	SIZE C	DWG. NO. 92194	REV SHEET C 9 OF

