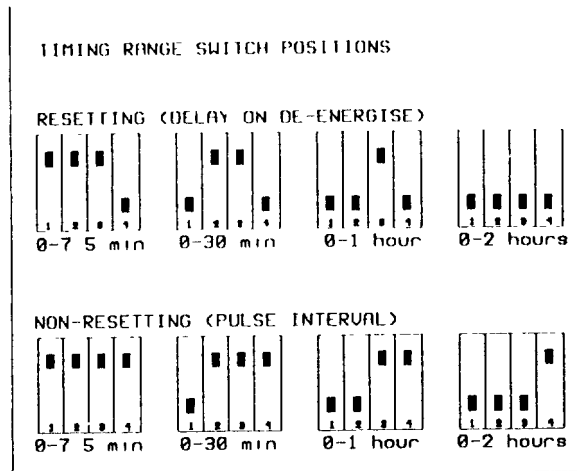


MULTI-RANGE TIMER TYPE MRT2H  
OPERATING INSTRUCTIONS



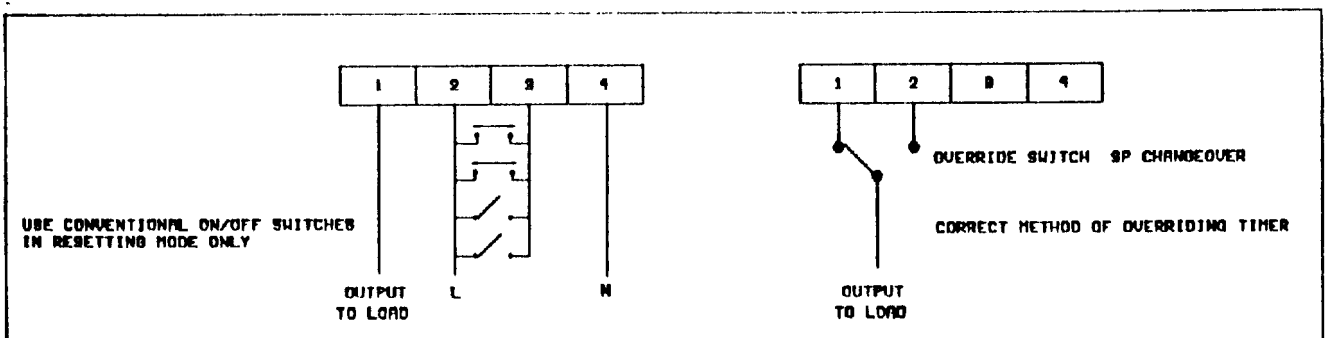
**RESETTING (DELAY ON DE-ENERGISE) MODE.**

With position 4 on the DIL switch DOWN the timer is in a resetting (delay on de-energise) mode. In this mode the timer is activated by pushing the integral or slave push switches or by closing a conventional ON/OFF slave switch. Timing out commences when the push switches are released or when conventional ON/OFF slave switches in the circuit are opened.

**NON-RESETTING (PULSE INTERVAL) MODE.**

With position 4 on the DIL switch UP the timer is in a non-resetting (pulse interval) mode. In this mode the timer is activated by pushing the integral or slave push switches. timing out commences immediately the timer is activated. IN THIS MODE ONLY PUSH BUTTON SWITCHES SHOULD BE USED TO ACTIVATE THE TIMER.

To set the timing, select the timing range required by means of the DIL switch, then turn the thumbwheel control to adjust the timing. (Clockwise to increase).



Operating voltage is 200-250VAC

Current rating @ 250VAC

16A Resistive

10A Incandescent lighting

6A Fluorescent lighting