

4103/2

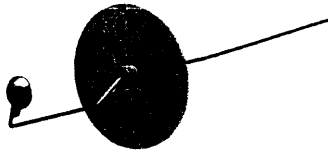


FLAME SPREADER

Constructed in copper and nickel plated

CATALOGUE NUMBER	TO FIT BURNER	WIDTH OF SPREADER
4103/1	11 mm COAL	35 mm
4103/2	11 mm NATURAL & LPG, 13 mm COAL	45 mm
4103/3	13 mm NATURAL & LPG	50 mm

Z4604



4104

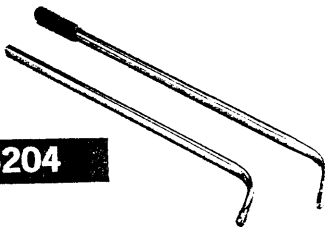
CHIMNEY

The chimney is designed as a flame guard and is fitted with a support rod and clip which may be secured to burners up to 16 mm diameter. Constructed in steel and painted blue acrylic.

DEFLAGRATING SPOON

Constructed in mild steel, welded to a handle. With cork and aluminium convex cap, 90 mm diameter to give safety closure. Overall length 400 mm.

Z5104



- Z4604
- Z4704
- Z4804

- Deflagrating spoon with cap and cork
- Spoon only
- Cap and cork only

Z5204

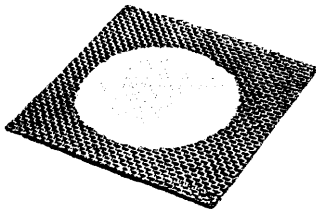
BLOWPIPE

Constructed in copper and nickel plated with replacement jet. Overall length: 200 mm

- Z5104
- Z5204

- Blowpipe with mouthpiece
- Blowpipe without mouthpiece

9072



WIRE GAUZE

Flat square galvanised iron mesh with ceramic centre.

- 9072
- 9073

- 125 mm with 85 mm centre
- 150 mm with 105 mm centre

~~7076757~~