

MVSTBR 2,5/...-ST

Plug-in direction vertical to the conductor axis,
connection point facing the **smooth** wall (R)
of the header

Pitch 5.0 or 5.08

(IEC)	rigid	flexible	I	U	
[mm ²]	solid	stranded	AWG	[A]	[V]
Connection data	0.2-2.5	0.2-2.5	24-12	12	250



Description	No. of positions	Dim. a [mm]	Type	Order No.	Pcs. Pkt.
Plugs, 5.0 mm pitch, color: green	2	5	MVSTBR 2,5/2-ST	17 92 01 6	50
	3	10	MVSTBR 2,5/3-ST	17 92 02 9	
	4	15	MVSTBR 2,5/4-ST	17 92 03 2	
	5	20	MVSTBR 2,5/5-ST	17 92 04 5	
	6	25	MVSTBR 2,5/6-ST	17 92 05 8	
	7	30	MVSTBR 2,5/7-ST	17 92 06 1	
	8	35	MVSTBR 2,5/8-ST	17 92 07 4	
	9	40	MVSTBR 2,5/9-ST	17 92 08 7	
	10	45	MVSTBR 2,5/10-ST	17 92 09 0	
	11	50	MVSTBR 2,5/11-ST	17 92 10 0	
	12	55	MVSTBR 2,5/12-ST	17 92 11 3	
	13	60	MVSTBR 2,5/13-ST	17 92 12 6	
	14	65	MVSTBR 2,5/14-ST	17 92 13 9	
	15	70	MVSTBR 2,5/15-ST	17 92 14 2	
	16	75	MVSTBR 2,5/16-ST	17 92 15 5	
	17	80	MVSTBR 2,5/17-ST	17 92 16 8	
	18	85	MVSTBR 2,5/18-ST	17 92 17 1	
	19	90	MVSTBR 2,5/19-ST	17 92 18 4	
	20	95	MVSTBR 2,5/20-ST	17 92 19 7	
	21	100	MVSTBR 2,5/21-ST	17 92 20 7	
	22	105	MVSTBR 2,5/22-ST	17 92 21 0	
	23	110	MVSTBR 2,5/23-ST	17 92 22 3	
	24	115	MVSTBR 2,5/24-ST	17 92 23 6	
	Plugs, 5.08 mm pitch, color: green	2	5.08	MVSTBR 2,5/2-ST-5,08	
3		10.16	MVSTBR 2,5/3-ST-5,08	17 92 25 2	
4		15.24	MVSTBR 2,5/4-ST-5,08	17 92 26 5	
5		20.32	MVSTBR 2,5/5-ST-5,08	17 92 27 8	
6		25.40	MVSTBR 2,5/6-ST-5,08	17 92 28 1	

7	30.48	MVSTBR 2,5/7-ST-5,08	17 92 29 4
8	35.56	MVSTBR 2,5/8-ST-5,08	17 92 30 4
9	40.64	MVSTBR 2,5/9-ST-5,08	17 92 31 7
10	45.72	MVSTBR 2,5/10-ST-5,08	17 92 32 0
11	50.80	MVSTBR 2,5/11-ST-5,08	17 92 33 3
12	55.88	MVSTBR 2,5/12-ST-5,08	17 92 34 6
13	60.96	MVSTBR 2,5/13-ST-5,08	17 92 35 9
14	66.04	MVSTBR 2,5/14-ST-5,08	17 92 36 2
15	71.12	MVSTBR 2,5/15-ST-5,08	17 92 37 5
16	76.20	MVSTBR 2,5/16-ST-5,08	17 92 38 8
17	81.28	MVSTBR 2,5/17-ST-5,08	17 92 39 1
18	86.36	MVSTBR 2,5/18-ST-5,08	17 92 40 1
19	91.44	MVSTBR 2,5/19-ST-5,08	17 92 41 4
20	96.52	MVSTBR 2,5/20-ST-5,08	17 92 42 7
21	101.60	MVSTBR 2,5/21-ST-5,08	17 92 43 0
22	106.68	MVSTBR 2,5/22-ST-5,08	17 92 44 3
23	111.76	MVSTBR 2,5/23-ST-5,08	17 92 45 6
24	116.84	MVSTBR 2,5/24-ST-5,08	17 92 46 9

Technical data**Dimensions**

see description

Pitch [mm] 5.0 / 5.08

Technical data in accordance with IEC / DIN VDE

Insulation material group	–		I	
Surge voltage category / contamination class	–/–	III / 3	III / 2	II / 2
Rated voltage	[V]	250	320	630
Rated surge voltage	[kV]	4	4	4
Nominal current / cross section	[A]/[mm ²]		12 / 2.5	
Maximum load current / cross section	[A]/[mm ²]		12 / 2.5	

Connection capacitysolid / stranded / conductor sizes [mm²]/[mm²]/AWG 0.2 - 2.5 / 0.2 - 2.5 / 24 - 12stranded with ferrules without / with plastic collar [mm²] 0.25 - 2.5 / 0.25 - 2.5**Multiple connection (2 conductors with same cross section)**solid / stranded [mm²] 0.2 - 1 / 0.2 - 1.5stranded with ferrules without plastic collar [mm²] 0.25 - 1stranded with TWIN ferrules with plastic collar [mm²] 0.5 - 1.5**Stripping length** [mm] 7**Internal cylindrical gage (IEC 947-1:1988)** – A 3**Thread** – M 3**Torque** [Nm] 0.5 - 0.6**Insulation material** PA

Inflammability class acc. to UL 94 V0

Temperature indices RTI/Ti 130/120

Temperature range (K/M/F)

100/120

Approval data (UL and CSA)

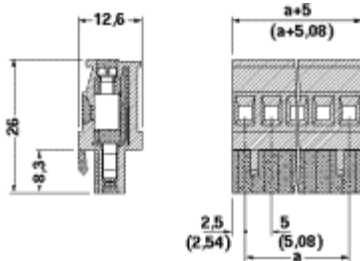
Nominal voltage / current / conductor sizes	UL: [V] / [A] / AWG	300 / 10 / 30 - 12
	CSA: [V] / [A] / AWG	300 / 10 / 28 - 12

Articles printed in bold can be delivered at short notice.
 Products with black or gray housing available on request.

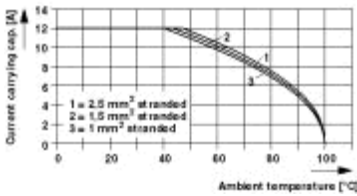
Note:

Only actuate COMBICON plug connectors when under no load condition. If for operating reasons small loads must be switched, experimental values are available upon request.

Dimensional drawing



Diagram



Current carrying capacity depending on ambient temperature

Plug : MVSTBR(W) 2,5/2-ST(F)(-5,08)

Header : MSTB(V)(A) 2,5/2-G(F)(-5,08)

