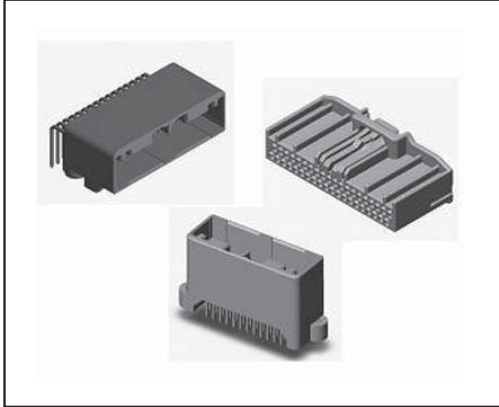


MX34 SERIES CONNECTORS

Compact Automotive Connectors for PCB-to-Cable Applications



FEATURES

- Compact, lightweight, double row PCB-to-cable connector with 2.2 mm horizontal pitch and 3 mm diagonal pitch.
- Up to 40 positions, low mating/unmating force less than 80N
- Socket contact with box-type pin header is durable to external force; contact part is highly resistant to twisting and equipped with a proven double leaf spring.
- Adoption of a preset-type retainer facilitates easy wire harness operation.
If retainer is not completely inserted in housing, the connector is not engaged, and incomplete contact insertion is detected.
- Lock spring is equipped with a bridge for protecting the contacts from external load.



The MX34 Series connectors are compact, non-waterproof connectors with a double row of contacts, and are developed for automotive use.

The up to 40 poles reduces mating and unmating force to 80N or less and improves workability. Furthermore, automotive connector requirements such as the preset type of double locking mechanism and box type of pin header are satisfied.

GENERAL SPECIFICATIONS

Number of Positions	•12, 16, 20, 24, 28, 32, 36, 40
Contact Resistance	5 milliohm max. (initial)
Withstanding Voltage	AC 1000V for one minute
Operating Temperature	-40 to 85°C
Rated Current	3A
Insulation Resistance	100 megohm min.
Durability	50 Times

MATERIALS AND FINISHES

Components	Materials and Finishes
Socket Housing	66NY + PPE (ALLOY)
Socket Contact	Highly Conductive Material/ Tin Plating
Retainer	66NY + PPE (ALLOY)
Pin Insulator	SPS GF 30
Pin Contact	Brass/ Tin Plating
Pin Contact 2	Brass/ Tin Plating

Consult JAE for "Ordering Information".

• Please consult JAE for verification of product availability.

Dimensions in mm (inches).