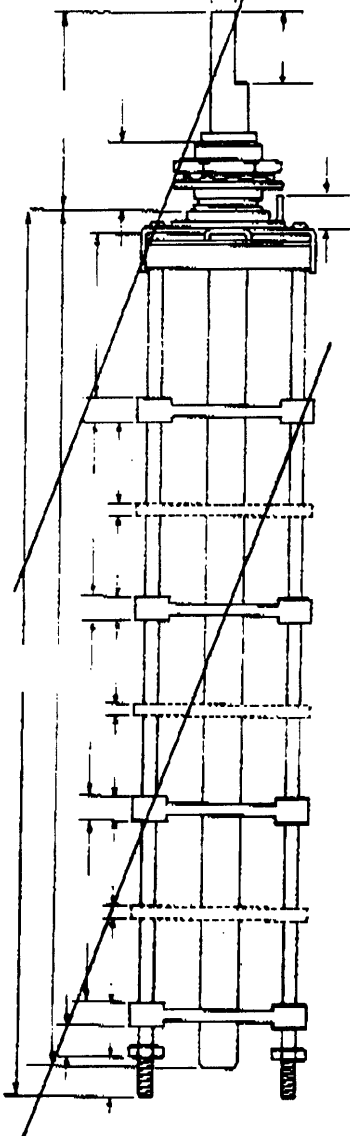
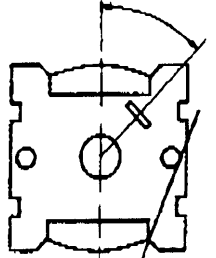


**N.S.F. LIMITED**  
switches & controls  
**KEIGHLEY YORKSHIRE**

149-177

**ROTARY WAFFER SWITCH ~~MA~~ ~~MA~~ ~~MA~~ 30° INDEXING**



**NOTES**

PREFERRED MECHANISM TYPE NO. 100  
Engineering Data Sheet 103  
For STANDARD CONTACT ARRANGEMENTS see Engineering Bulletin 25B & 25B  
SEALED/NGN SEALED  
WAFFER TYPE MA/MA  
No. of POSITIONS  
No. of WAFFERS WAFFERS ONLY (with sub-wafer)  
SPRINGING/NO SPRINGING  
ROTOR STRANDARD  
ROTOR SPRINGS  
TORQUE LIGHT/MEDIUM/HEAVY  
MARKING (if required)

WAFFER ONLY  
FIT P.C. CONTACT FRAMES  
2210000 AND 2210000  
FIT BET. WOULD 220000

455771 MA N/SKORTING  
455771/1/MA SKORTING

ISSUE DATE 13/01/87  
CN. No. 79008  
CHANGE CHANGE  
CHANGE

RAISED: *pe* CHECKED: DATE: *3/3*

CUSTOMER EARSHILL  
PART NO. 149-177

N.S.F. 455771/1/MA  
SPEC. No. 455771 MA

