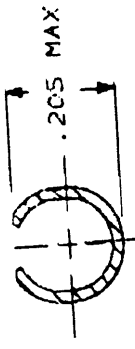
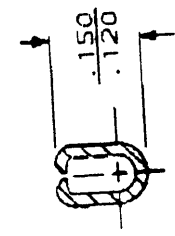
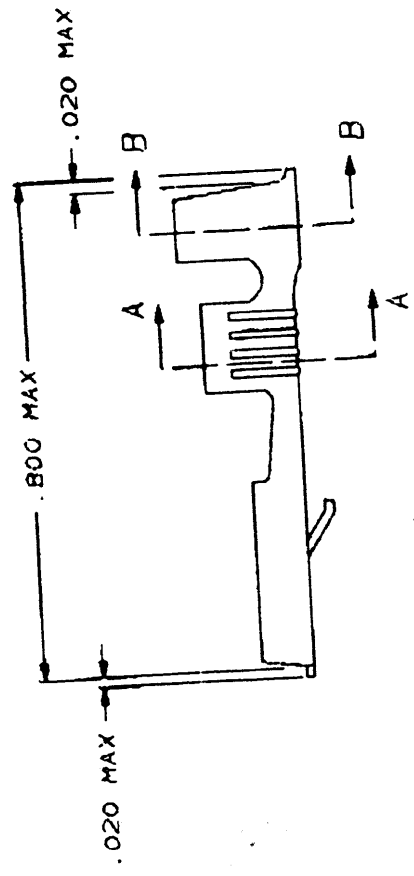


REVOLUTIONS		DATE	APP'D
DESCRIPTION		5/4/95	JR/JG
REV PER	0710-0186-55		

USE	QTY	IN	REV
AF	50	B	

4
 DRAWING MADE IN STEREO ANGLE PROJECTION
 THIS DRAWING IS UNPUBLISHED.
 BY AMP INCORPORATED. ALL INTERNATIONAL RIGHTS RESERVED.
 © COPYRIGHT 1988

- SUPPLIED IN LOOSE PIECE FORM.
- SEE STRIP DWG. 42281 FOR ADDITIONAL DETAILS.



SECTION A-A

SECTION B-B

OBsolete	SILVER	BRASS	.120-.160 DIA	#18-#14 AWG	.032	42282-3
	TIN	BRASS	.120-.160 DIA	#18-#14 AWG	.032	42282-2
		BRASS	.120-.160 DIA	#18-#14 AWG	.032	42282-1
	FINISH	MATERIAL	INSUL RANGE	WIRE SIZE	MATING TAB THK 3.001	PART NO
			DO NOT SCALE DRAWING. DIMENSIONS IN INCHES UNLESS OTHERWISE SPECIFIED. 2 PLACES .015 UNLESS OTHERWISE SPECIFIED.	AMP INCORPORATED HARRISBURG, PA 17105-3608	AMP	
			MATERIAL	SEE TABLE	RECEPTACLE, FASTIN-FASTON, .250 SERIES	
			FINISH	SEE TABLE	SIZE CASE EDGE BRASS	
					42282-3	

THIS DRAWING IS A CONTROLLED DOCUMENT AND IS THE PROPERTY OF AMP INCORPORATED. IT IS TO BE KEPT IN CONFIDENTIALITY AND NOT REPRODUCED OR COPIED WITHOUT THE WRITTEN PERMISSION OF AMP INCORPORATED.

SEE TABLE

FIG. 1

42282-3

OF 1