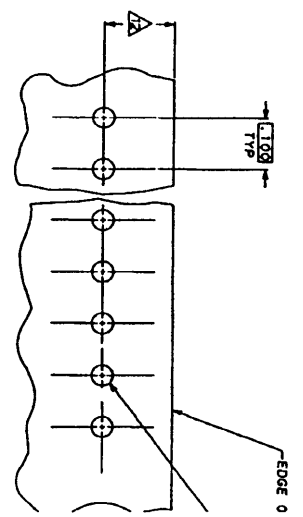


588-398
 404
 416
 428
 430
 441
 453
 465



RECOMMENDED MOUNTING HOLE PATTERN
 FOR .083 THICK P.C. BOARD

CONVERSION TABLE	MM	IN	MM
0.32	0.01	1.000	25.40
0.25	0.01	.535	13.59
0.20	0.01	.295	7.48
0.18	0.01	.200	5.08
0.15	0.01	.140	3.56
0.12	0.01	.120	3.05
0.08	0.01	.090	2.54
0.03	0.01	.050	1.27
0.01	0.01	.040	1.02
0.00	0.00	.035	0.89



THIS DRAWING IS A METRIC EQUIVALENT AND SHOULD NOT BE USED FOR DIMENSIONS UNLESS SPECIFICALLY NOTED OTHERWISE.

REV	DATE	BY	CHK	APP	DESCRIPTION
1	87-11-22	SM	SM		REVISED FOR P.C. BOARD DIMENSIONS
2	87-11-22	SM	SM		REVISED FOR P.C. BOARD DIMENSIONS
3	87-11-22	SM	SM		REVISED FOR P.C. BOARD DIMENSIONS
4	87-11-22	SM	SM		REVISED FOR P.C. BOARD DIMENSIONS
5	87-11-22	SM	SM		REVISED FOR P.C. BOARD DIMENSIONS
6	87-11-22	SM	SM		REVISED FOR P.C. BOARD DIMENSIONS
7	87-11-22	SM	SM		REVISED FOR P.C. BOARD DIMENSIONS
8	87-11-22	SM	SM		REVISED FOR P.C. BOARD DIMENSIONS
9	87-11-22	SM	SM		REVISED FOR P.C. BOARD DIMENSIONS
10	87-11-22	SM	SM		REVISED FOR P.C. BOARD DIMENSIONS
11	87-11-22	SM	SM		REVISED FOR P.C. BOARD DIMENSIONS
12	87-11-22	SM	SM		REVISED FOR P.C. BOARD DIMENSIONS
13	87-11-22	SM	SM		REVISED FOR P.C. BOARD DIMENSIONS
14	87-11-22	SM	SM		REVISED FOR P.C. BOARD DIMENSIONS
15	87-11-22	SM	SM		REVISED FOR P.C. BOARD DIMENSIONS
16	87-11-22	SM	SM		REVISED FOR P.C. BOARD DIMENSIONS
17	87-11-22	SM	SM		REVISED FOR P.C. BOARD DIMENSIONS
18	87-11-22	SM	SM		REVISED FOR P.C. BOARD DIMENSIONS
19	87-11-22	SM	SM		REVISED FOR P.C. BOARD DIMENSIONS
20	87-11-22	SM	SM		REVISED FOR P.C. BOARD DIMENSIONS
21	87-11-22	SM	SM		REVISED FOR P.C. BOARD DIMENSIONS
22	87-11-22	SM	SM		REVISED FOR P.C. BOARD DIMENSIONS
23	87-11-22	SM	SM		REVISED FOR P.C. BOARD DIMENSIONS
24	87-11-22	SM	SM		REVISED FOR P.C. BOARD DIMENSIONS
25	87-11-22	SM	SM		REVISED FOR P.C. BOARD DIMENSIONS
26	87-11-22	SM	SM		REVISED FOR P.C. BOARD DIMENSIONS
27	87-11-22	SM	SM		REVISED FOR P.C. BOARD DIMENSIONS
28	87-11-22	SM	SM		REVISED FOR P.C. BOARD DIMENSIONS

NO. NOT SCALE PRINT	DATE	BY	CHK	APP	DESCRIPTION
1	87-11-22	SM	SM		REVISED FOR P.C. BOARD DIMENSIONS
2	87-11-22	SM	SM		REVISED FOR P.C. BOARD DIMENSIONS
3	87-11-22	SM	SM		REVISED FOR P.C. BOARD DIMENSIONS
4	87-11-22	SM	SM		REVISED FOR P.C. BOARD DIMENSIONS
5	87-11-22	SM	SM		REVISED FOR P.C. BOARD DIMENSIONS
6	87-11-22	SM	SM		REVISED FOR P.C. BOARD DIMENSIONS
7	87-11-22	SM	SM		REVISED FOR P.C. BOARD DIMENSIONS
8	87-11-22	SM	SM		REVISED FOR P.C. BOARD DIMENSIONS
9	87-11-22	SM	SM		REVISED FOR P.C. BOARD DIMENSIONS
10	87-11-22	SM	SM		REVISED FOR P.C. BOARD DIMENSIONS
11	87-11-22	SM	SM		REVISED FOR P.C. BOARD DIMENSIONS
12	87-11-22	SM	SM		REVISED FOR P.C. BOARD DIMENSIONS
13	87-11-22	SM	SM		REVISED FOR P.C. BOARD DIMENSIONS
14	87-11-22	SM	SM		REVISED FOR P.C. BOARD DIMENSIONS
15	87-11-22	SM	SM		REVISED FOR P.C. BOARD DIMENSIONS
16	87-11-22	SM	SM		REVISED FOR P.C. BOARD DIMENSIONS
17	87-11-22	SM	SM		REVISED FOR P.C. BOARD DIMENSIONS
18	87-11-22	SM	SM		REVISED FOR P.C. BOARD DIMENSIONS
19	87-11-22	SM	SM		REVISED FOR P.C. BOARD DIMENSIONS
20	87-11-22	SM	SM		REVISED FOR P.C. BOARD DIMENSIONS
21	87-11-22	SM	SM		REVISED FOR P.C. BOARD DIMENSIONS
22	87-11-22	SM	SM		REVISED FOR P.C. BOARD DIMENSIONS
23	87-11-22	SM	SM		REVISED FOR P.C. BOARD DIMENSIONS
24	87-11-22	SM	SM		REVISED FOR P.C. BOARD DIMENSIONS
25	87-11-22	SM	SM		REVISED FOR P.C. BOARD DIMENSIONS
26	87-11-22	SM	SM		REVISED FOR P.C. BOARD DIMENSIONS
27	87-11-22	SM	SM		REVISED FOR P.C. BOARD DIMENSIONS
28	87-11-22	SM	SM		REVISED FOR P.C. BOARD DIMENSIONS

- POST TO WITHSTAND 13 NEWTONS (3.195 LBS) MIN AXIAL FORCE IN BOTH DIRECTIONS SHOWN WITHOUT DISLODGING.
- TOLERANCES APPLY TO SOLDER SIDE OF BOARD.
- MEASURED AT SURFACE -A-.
- PLASTIC FLASH PERMITTED IN THIS AREA.
- PARTS COMPLY WITH AMP SOLDERABILITY SPEC. NO. 109-11-2.
- ONE HOLE MAY BE UNDERSIZED (.035/.032 DIA.) FOR ASSEMBLY RETENTION DURING WAVE SOLDERING.
- HEADER-THERMOPLASTIC POLYESTER POST-COPPER ALLOY (TIN PLATED) COORDINATE DIMENSION APPLIES FROM CENTER OF ACTUAL FEATURE.
- PLASTIC BURS CAUSED BY CUT-OFF TOOLING ARE PERMITTED WITHIN THE MAXIMUM TOLERANCE ENVELOPE.
- POST TO BE MEASURED WHEN STRIP IS HELD FLAT.
- POST MUST WITHSTAND TWO 90° BENDS AGAINST EXTRUSION WITHOUT BREAKING.
- DIMENSION SHOULD BE .120 MIN. WHEN MATING WITH A MTA 100 CONNECTOR ASSEMBLY OR A CAT 100 CONNECTOR.
- PIN BURR OF .005 MAX. VERTICAL AND .003 MAX. HORIZONTAL PERMITTED AT POST TIPS ON BOTH ENDS.

CUSTOMER DRAWING