

■ Accessories – Order Separately

Probe Holders

Order Number	Description	Material	Max. Temp
PS-31	Economy type, fitted with three 1m electrodes, which can be cut to required length	Phenol resin	70°C
PS-3S	Holder for three electrodes		
PS-5S	Holder for five electrodes		
BF-1	Ceramic holder for one electrode for liquids with low specific resistance	Ceramic	150°C
BS-1	High pressure, high temperature holder for one electrode for pressures up to 20kg/cm	Teflon	250°C

Note: For probe holders that use separate electrodes (all except PS31) the probes can be extended using a connector. Use a separator at each join.

Electrodes and Connectors

103-268/9
103-270/2/5

Order Number	F03-01-SUS201	F03-02-SUS201
Material	Equivalent to SUS-403	
Description	1m electrode	Connector to join 2 electrodes

Electrode Separators – Use when joining electrodes with connecting nut

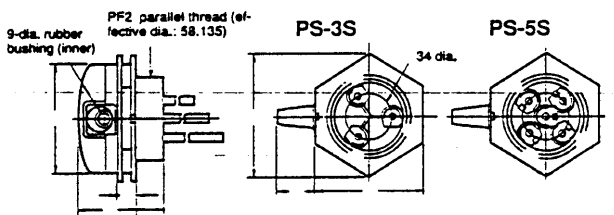
Order Number	No. of Electrodes
F03-14-3P	3
F03-14-5P	5

Connecting Sockets – With screw terminals, DIN rail or surface mounting

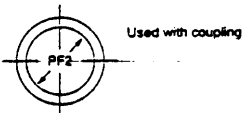
Order Number	Type of Controller
8PFA-1	Standard
PF-083AE	Compact

Dimensions

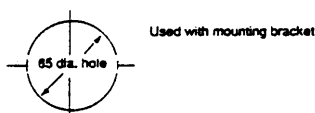
Probe Holders PS-3S/5S



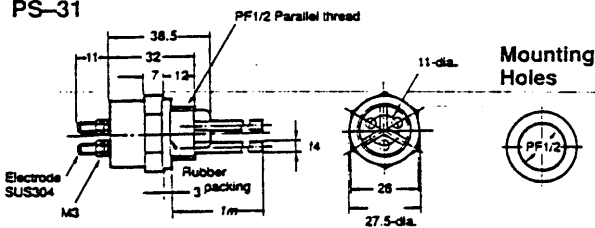
Mounting Holes



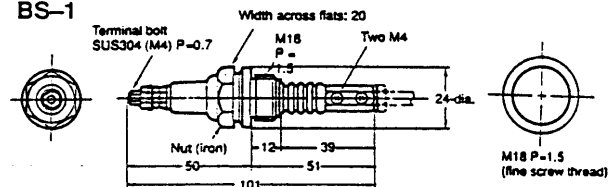
Screw Holes



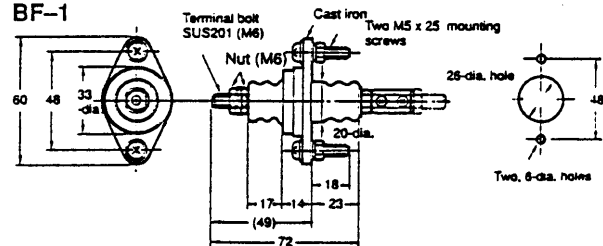
PS-31



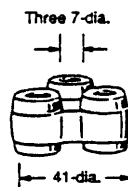
BS-1



BF-1



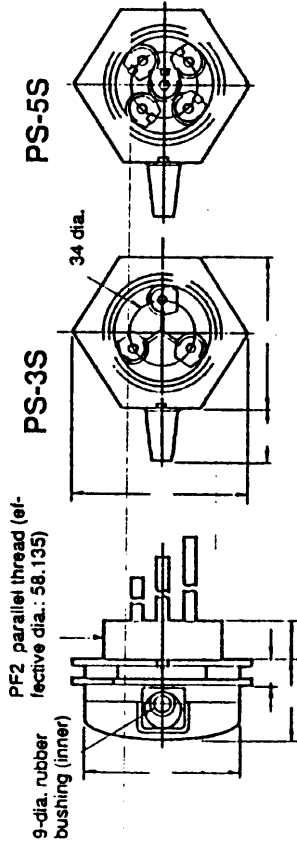
Separator F03-14 3P (for Three Poles)



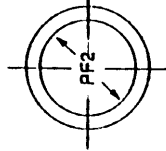
Note: For probe holders that use separate electrodes (all except PS31) the probes can be extended using a connector. Use a separator at each join.

Dimensions

Probe Holders PS-3S/5S

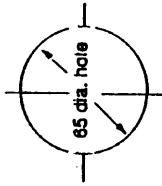


Mounting Holes



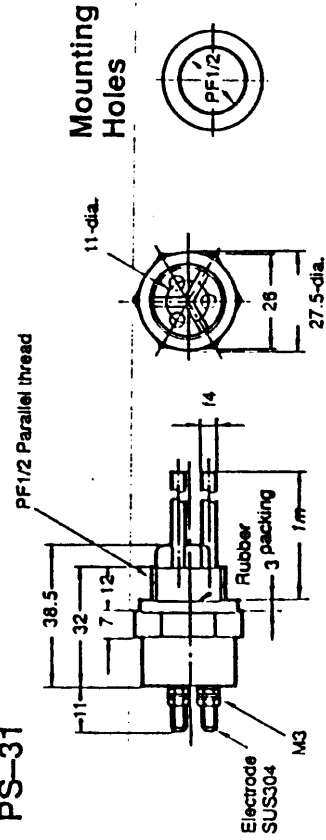
Used with coupling

Screw Holes

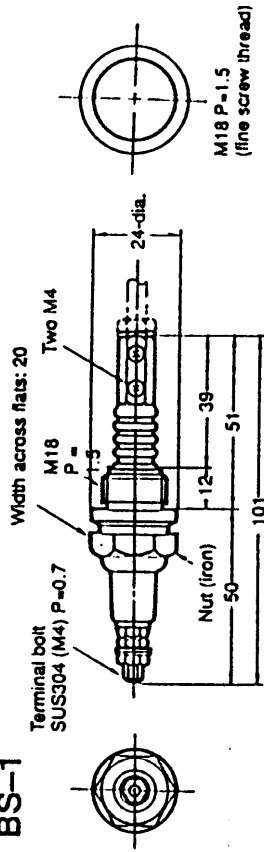


Used with mounting bracket

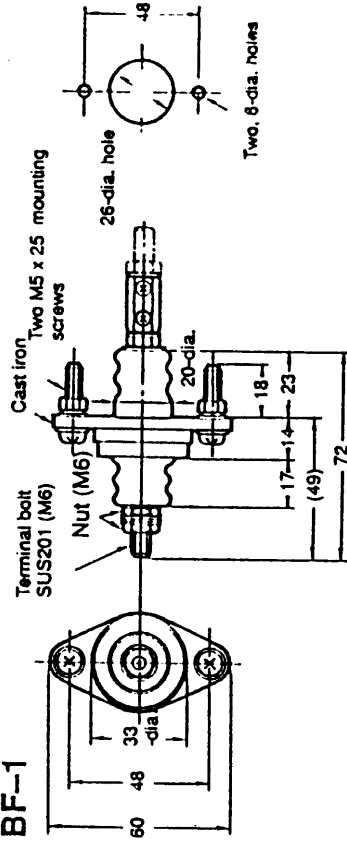
PS-31



BS-1



BF-1



Separator F03-14 3P (for Three Poles)

