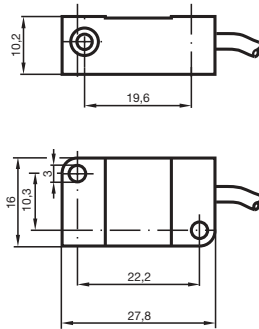


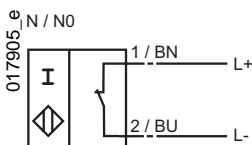
Comfort series  
2 mm embeddable



CE

Switching element function	NAMUR NC
Installation	embeddable
Rated operating distance $s_n$	2 mm
Assured operating distance $s_a$	0 ... 1.62 mm
Reduction factor $r_{V2A}$	0.7
Reduction factor $r_{AI}$	0.25
Reduction factor $r_{Cu}$	0.2
Nominal voltage $U_o$	8 V
Current consumption	
Measuring plate detected	$\leq 1$ mA
Measuring plate not detected	mA
Switching frequency $f$	0 ... 1000 Hz
Ambient temperature	-25 ... 100 °C (248 ... 373 K)
EMC in accordance with	EN 60947-5-2
Protection degree	IP67
Connection type	0.1 m, PVC-cable
Core cross-section	0.14 mm <sup>2</sup>
Housing material	PBT
Sensing face	PBT
Standard conformity	DIN EN 60947-5-6 (NAMUR)
Effective internal capacity $C_i$ , $C_j$	$\leq 40$ nF
Effective internal inductivity $L_i$ , $L_j$	$\leq 35$ $\mu$ H

## Connection



06.11.2001