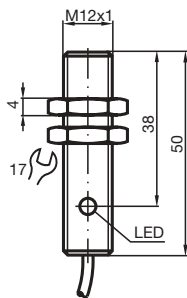


Comfort series  
2 mm embeddable

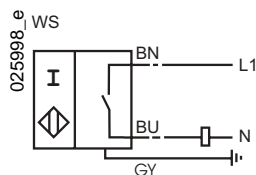


CE

Switching element function	AC	Make function
Installation	embeddable	
Rated operating distance $s_n$	2 mm	
Assured operating distance $s_a$	0 ... 1.62 mm	
Reduction factor $r_{V2A}$	0.65	
Reduction factor $r_{AI}$	0.15	
Reduction factor $r_{Cu}$	0.1	
Operating voltage $U_B$	20 ... 253 V	
Operating current $I_L$	5 ... 200 mA	
Switching frequency $f$	0 ... 25 Hz	
Off-state current $I_r$	$\leq 0.8$ mA	
Momentary current (20 ms, 0.1 Hz)	4000 mA	
Voltage drop $U_d$	$\leq 5$ V	
Indication of the switching state	LED, red	
Ambient temperature	-25 ... 70 °C (248 ... 343 K)	
Protection degree	IP67	
Connection type	2 m, PVC-cable	
Core cross-section	0.34 mm <sup>2</sup>	
Housing material	high grade steel	
Sensing face	PBT	
Standard conformity	EN 60947-5-2	

www.pepperl-fuchs.com

## Connection



025998\_e  
06.11.2001

PEPPERL+FUCHS GmbH