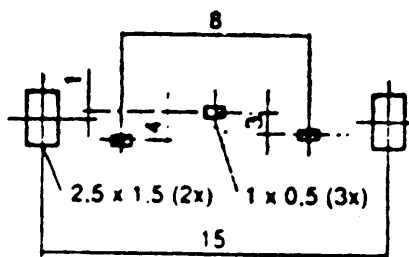
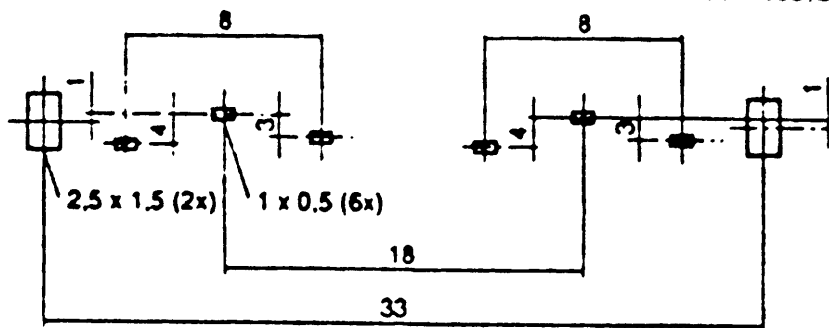
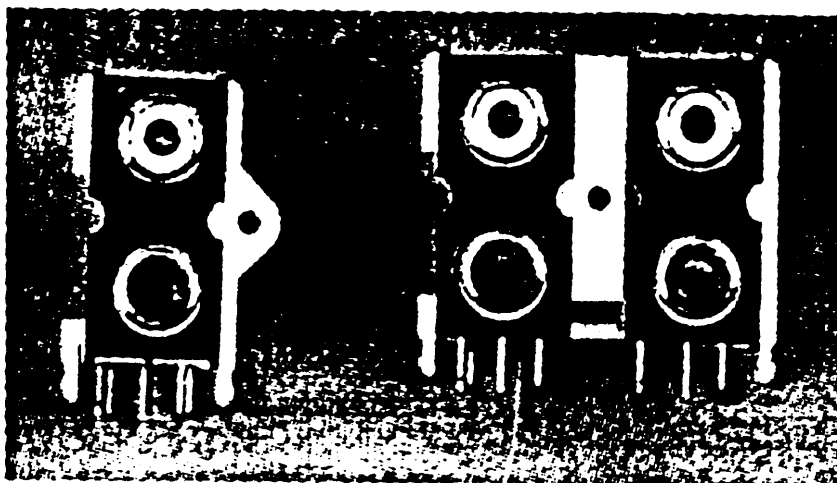


# Phono cont'd

382-4822

382-4864

## PCB Mount Phono Sockets



Snap-in phono sockets on a PCB mounting with a screw fixing hole for securing it to a panel. The individual sockets are coded white and red, and the contacts and terminals are either nickel or gold plated. Suitable for audio and video equipment.

Type	Dimensions (WxHxD)	Order Code
------	-----------------------	------------

### Nickel Plated

Single Pair	20x27x20mm	<b>CN05873</b> *
-------------	------------	------------------

2xPair	34x27x20mm	<b>CN05874</b> *
--------	------------	------------------

### Gold Plated

Single Pair	20x27x20mm	<b>CN04159</b> *
-------------	------------	------------------

2xPair	34x27x20mm	<b>CN04160</b> *
--------	------------	------------------