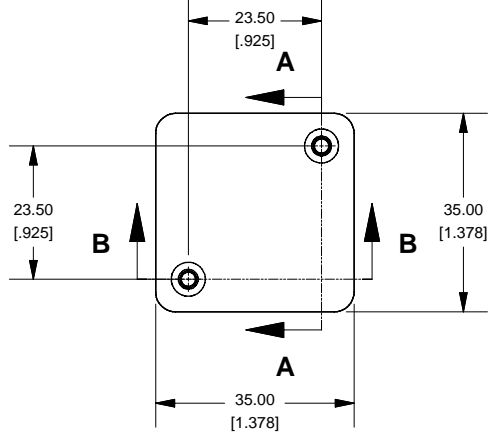
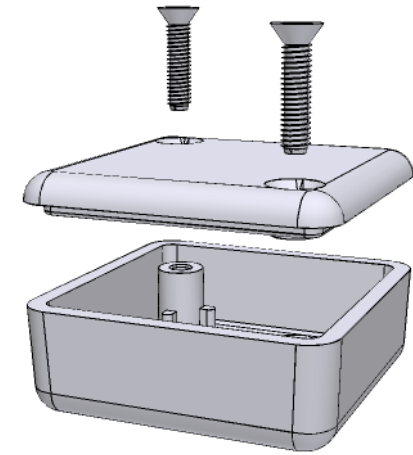
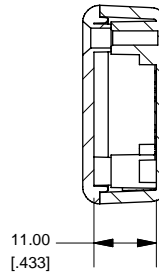


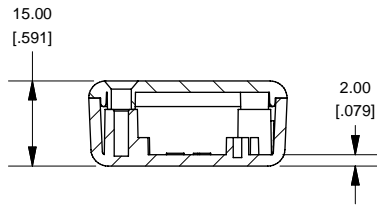
Top View of Assembly



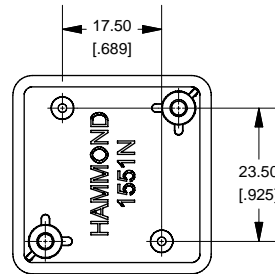
SECTION A-A End View of Assembly



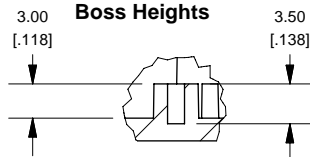
SECTION B-B Side View of Assembly



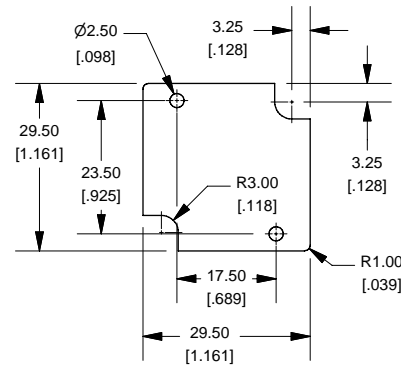
Top View Looking Inside Box



SECTION C-C Boss Heights

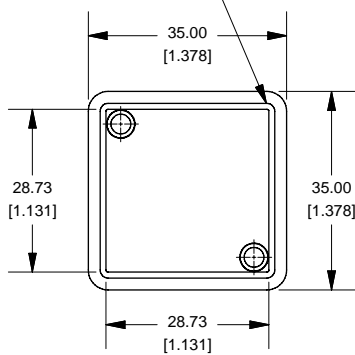


Maximum P.C. Board Size



Lid

Note: Enclosure Lid may come with "gate" tab still intact. This tab is easily removed if necessary



NOTE

Purchased assembly includes lid and box made from GP ABS material and cover screws.

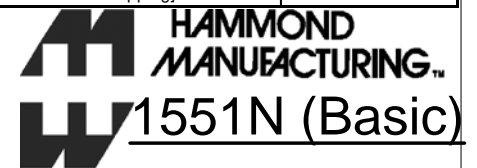
1551N

1551N Flange Enclosure

Black Enclosure - RAL 7001 - UL94 - HB	1551NHBK
Gray Enclosure - RAL 7035 - UL94 - HB	1551NGY
Translucent Blue - UL94 - HB	1551NTBU

ACCESSORIES

Black Enclosure Cover Screws (Pkg 100) [#4 X 1/2" Self Tapping]	1591TS100BK
Grey Enclosure Cover Screws (Pkg 100) [#4 X 1/2" Self Tapping]	1591TS100
P.C. Board Screws (Pkg 100) [32 x 3/16" Self Tapping]	1551ATS100



www.hammondmfg.com