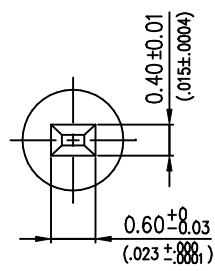
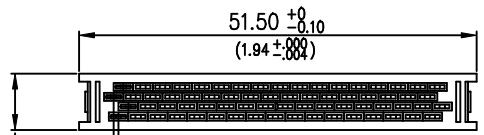
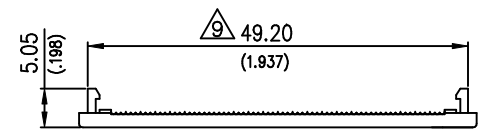
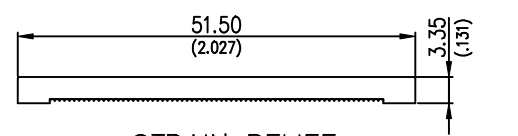
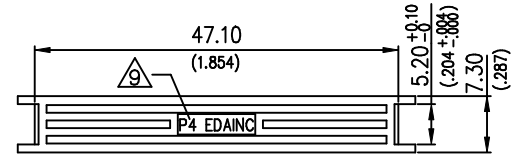
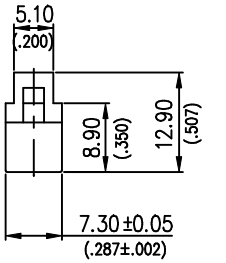
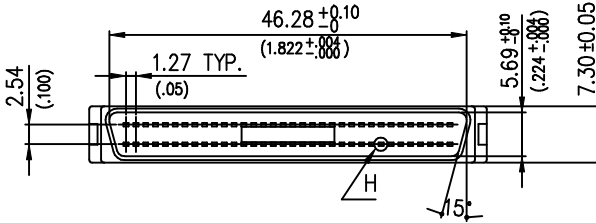
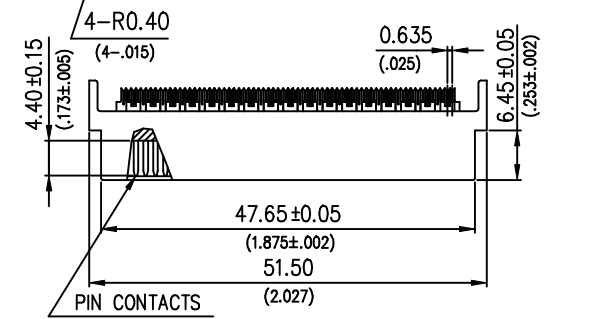
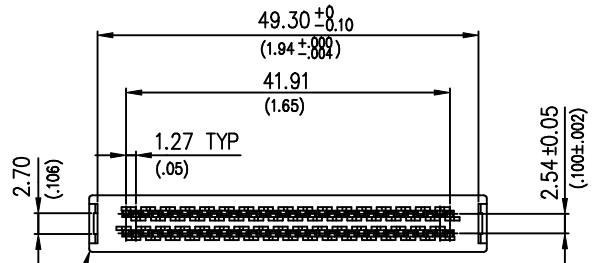


| REV. | ZONE | LTR | DESCRIPTION | DATE | REVISER | APPD |
|------|------|-----|--|-----------|---------|--------|
| 8 | | △8 | RENEW DRAWING | 9/2-2000 | TONY | WENSON |
| 9 | | △9 | MODIFY TOLERANCE $\pm 0.10 \rightarrow \pm 0.25$ | 4/18/2001 | TONY | WENSON |



HOUSING & CONTACT ASSEMBLY

STRAIN RELIEF

COVER

H DETAIL: 10:1

ORDERING INFORMATION

8E 068 P - 3 0 0 0 0 - 10
 (1) (2) (3) (4) (5) (6) (7) (8) (9)

- SERIES NUMBER :
 8E : HIGH DENSITY 1.27(.050") SPACING MINI CONNECTOR
 FLAT CABLE I.D.C TYPE 0.635(0.025")
 (FOR 30 AWG WIRE OR WIRE DIAMETER
 0.45 - 0.60 mm)
- NO OF CONTACTS :
 EX 068 : 68 POSITIONS
- CONTACT TYPE :
 P : PLUG S : SOCKET
- COLOR (INSULATOR)
 3 : BLACK
- CONTACT FINISH :
 0 : SELECTIVE GOLD FLASH OVER 30 μ NICKEL
 2 : 15 μ" SELECTIVE GOLD OVER 50 μ NICKEL
 3 : 30 μ" SELECTIVE GOLD OVER 50 μ NICKEL
- METAL SHELL FINISH :
 0 : ALL PLASTIC
 1 : TIN PLATED SHELL, WITH GROUNDING INDENTS
 4 : TIN PLATED SHELL, W/O GROUNDING INDENTS
 5 : NICKEL PLATED SHELL, W/O GROUNDING INDENTS
 6 : NICKEL PLATED SHELL, WITH GROUNDING INDENTS
- SCREW TYPE :
 0 : NONE, 1 : 4-40 UNC, 2 : 2-56 UNC, 3 : M2.6*0.45
- BRACKET TYPE
 0 : NONE
 1 : WITHOUT RAILS, WITH LATCH BLOCKS
 2 : WITH RAILS & LATCH BLOCKS
 3 : WITHOUT RAILS & LATCH BLOCKS
- SUFFIX NO:
 10 : EDA LOGO

SPECIFICATION -

- INSULATOR MATERIAL : PBT WITH GLASS-FIBER REINFORCED
 UL 94V-0
- CONTACT MATERIAL : PHOSPHOR BRONZE , GOLD OVER NICKEL
- RATED CURRENT : 1A
- INSULATION RESISTANCE : 500MΩ MIN. AT 500V DC.
- CONTACT RESISTANCE : 35mΩ MAX.
- DIELECTRIC WITHSTANDING VOLTAGE : AC 250V FOR 1 MINUTE.
- OPERATING TEMPERATURE : -55°C ~ +105°C.

| | | | | | |
|------------|--|-------------------------|-------------------------------|----------|----------|
| MATERIAL | | TOLERANCE UNSPECIFIED | | PART NO. | |
| X | | .000 ± | EDA INC. | | SCALE |
| | | .00 ±0.25 | | | |
| FINISH | | ANGLE ± 1° | 1.4 : 1 | | mm(inch) |
| X | | DRAWN 曹長成 05/30/94 | NAME | | SHEET |
| | | DESIGNER | 8E 68PIN SERIES SCSI-III H.D. | | 1 |
| | | CHECKED | UNSHIELDED PLUG ASSEMBLY | | / |
| | | APPROVED Wenson 4/18-01 | IDC TYPE 0.635(.025") | | 1 |
| DRAWING NO | | | R-S108E-0 | | REV. |
| | | | | | 9 |