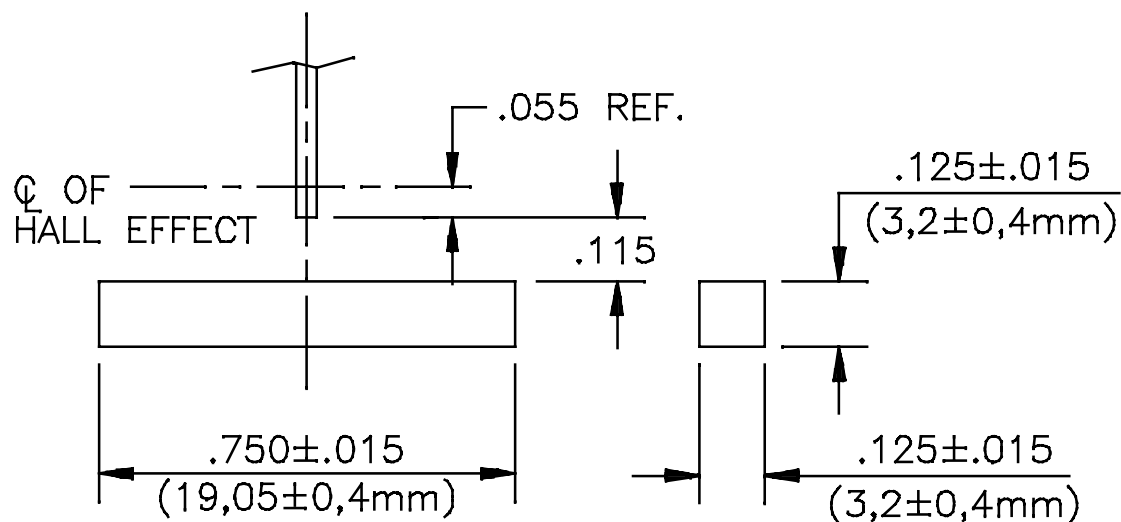


1. MATERIAL: ALNICO 5 SINTERED
2. MAGNETIZATION LEVEL: SATURATED (SEE NOTE 7)
3. MAGNETIZATION DIRECTION: PARALLEL TO LENGTH
4. DIMENSIONS: INCHES OR AS SHOWN
5. SQUARNESS: 1°
6. PACKING: PREFERRED METHOD IS 100 MAGNETS SHRINK WRAPPED ON CARDBOARD FLATS. OTHER METHODS MAY BE ACCEPTABLE WITH APPROVAL. MAXIMUM WEIGHT IS 25 Lbs. PER BOX.
7. MAGNETIZATION LEVEL USING F.W. BELL METER 4048 AND TRANSVERSE PROBE #1706 AND MEASURED AT THE CENTER OF THE MAGNET AS SHOWN PER DRAWING, IS 50 GAUSS MINIMUM, 200 GAUSS MAXIMUM. FOR OTHER GAUSS PROBES, PLACE CENTER OF HALL EFFECT SENSING ELEMENT AT SAME LOCATION WITH RESPECT TO MAGNET. (REF. TN 3928-C)



H-33 MAGNET

H-33 MAGNET							Hamlin Breed Electronics Limited Partnership			DCR No.
AI	UPDATE MAGNET DRAWING	A9798	MCP	11/14/02	MCP	11/14/02	Dwn.	FH	DATE 1/12/64	250-70-210
REV.	DESCRIPTION OF REVISION	DCR No.	BY	DATE	APP.	DATE	App'd	DATE		Page 1 of 1