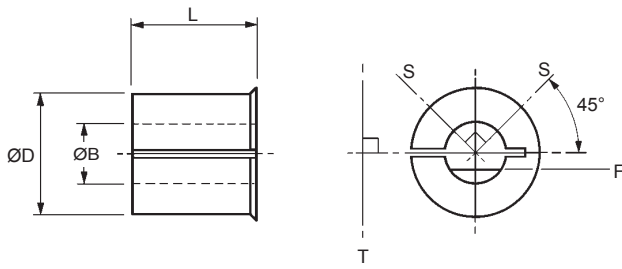


# HUCO-LOK METALLIC (NON-INSULATING) & GLASS-FIBRE (INSULATING) BORE ADAPTORS



Bore For optimum fastening, install HUCO-LOK bore adaptors as shown.

'S' represents screws in set screw hub.

'T' represents tangential screw in clamp hub.

'F' shows recommended orientation of flattened shaft in set screw hub.

Note that both traction and concentricity may be affected when using an adaptor. For best results shafts with h6 tolerance or better, are recommended. Undersized shafts become progressively less effective. For similar reasons, flattened shafts with more than 1/4 of their diameter removed are not recommended.

MAIN TABLE - DIMENSIONS & ORDER CODES

Cat ref.	251	253	*254	255	257	259	260	261	262	263
ØD	5	6.35	8	8	10	12.7	16	20	25.4	28
L	4.3	6.6	5.8	8.1	8.1	10.7	13.2	20	20	25
to fit bores coded	<b>20</b>	<b>24</b>	<b>28</b>	<b>28</b>	<b>32</b>	<b>36</b>	<b>42</b>	<b>48</b>	<b>53</b>	<b>54</b>
minor ØB	<b>Adaptor ref.</b>									
2	251.11	253.11								
3	251.14	253.14	254.14	255.14						
3.048	251.15	253.15	254.15	255.15						
3.175	251.16	253.16	254.16	255.16						
4	251.18	253.18	254.18	255.18	257.18					
4.763		253.19	254.19	255.19	257.19					
5		253.20	254.20	255.20	257.20	259.20				
6			254.22	255.22	257.22	259.22	260.22			
6.350					257.24	259.24	260.24			
7					257.25	259.25	260.25			
7.938					257.27	259.27	260.27	261.27		
8					257.28	259.28	260.28	261.28		
9						259.30	260.30	261.30		
9.525						259.31	260.31	261.31	262.31	
10						259.32	260.32	261.32	262.32	
11							260.33	261.33	262.33	
12							260.35	261.35	262.35	263.35
12.700							260.36	261.36	262.36	263.36
14							260.38	261.38	262.38	263.38
15								261.40	262.40	263.40
15.875								261.41	262.41	263.41
16								261.42	262.42	263.42
18								261.45	262.45	263.45
19									262.46	263.46
19.050									262.47	263.47
20									262.48	263.48
22									262.49	263.49
22.225									262.50	263.50
24										263.51
25										263.52
25.400										263.53
material	brass					al. alloy				

Major diameter D is toleranced -0.013 / -0.050mm

Minor diameter B is toleranced +0.03 / -0mm

\* Short adaptor 254 is used with couplers as indicated in the standard bores tables. Use 255 for all other 8mm bores.

### HOW TO ORDER

**253.18**

Adaptor ref.

Minor ØB ref.

An identical range is manufactured in glass-fibre to provide electrical isolation between shafts in all-metal couplers, i.e. Flex M & Flex B.

**253G18**

Adaptor ref.

Minor ØB ref.