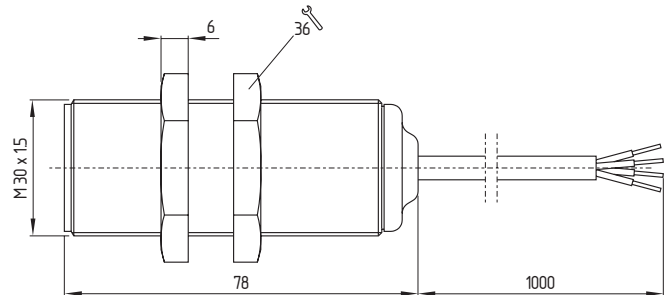


5. Magnetic safety sensors
5.4 Cylindrical design
5.4.1 BNS 300 range

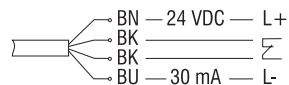


Features

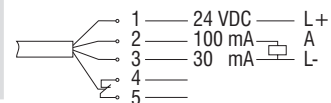
- Thermoplastic enclosure
- Protection against manipulation
- With integral evaluation
- Control Category 1
- Suitable for food processing industry
- Long life
- IP 67
- With LED
- Insensitive to transverse misalignment
- Concealed mounting possible
- Insensitive to soiling
- Available with additional output for indication

Contacts

1 NC



1 NC



24 VDC
 24 VDC, with additional
 output for indication
 42 VDC

BNS 300-01zG
 -
BNS 300-01zG-2246

-
BNS 300-01zG-2230
 -

Control Category

1

1

Actuator
 Actuator for
 food processing industry

BPS 300
BPS 303, BPS 303 SS

BPS 300
BPS 303, BPS 303 SS

Notes

The LED is illuminated when the guard is open.
 Contact symbols shown for the closed condition of the guard device.
 The actuator for the magnetic safety sensors must be ordered separately.

Approvals

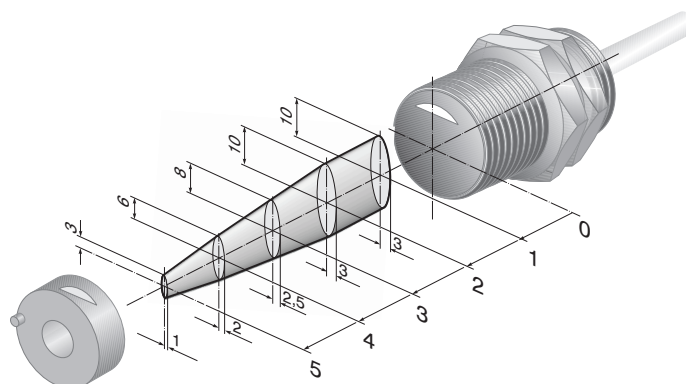


5. Magnetic safety sensors
5.4 Cylindrical design
5.4.1 BNS 300 range



Axial misalignment

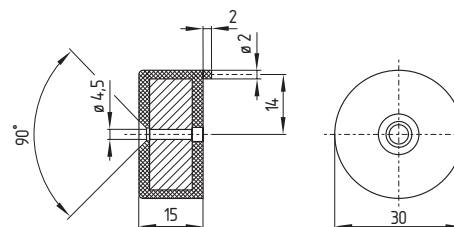
- Enabling zone



Actuators

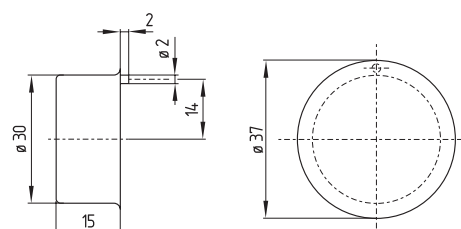
BPS 300

- Thermoplastic enclosure
- Actuator including a tamperproof screw



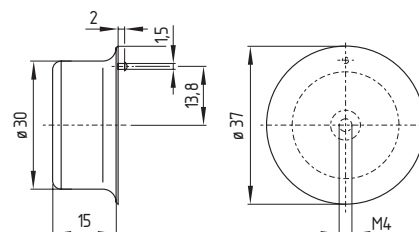
BPS 303

- Thermoplastic enclosure
- Actuator for use in food processing industry
- Includes a self-tapping tamperproof screw



BPS 303 SS

- Stainless steel enclosure
- Actuator for use in food processing industry
- Includes a self-tapping tamperproof screw



Ordering details

BNS 300 with additional output for indication:
 BNS 300-01zG-2230
 Actuator including tamperproof screw: BPS 300

5. Magnetic safety sensors

5.5 Technical data



	BNS 180	BNS 303	BNS 300
Standards:	DIN VDE 0660-209, EN 1088, BG-GS-ET-14 (In combination with AES safety monitoring modules)		DIN VDE 0660-209, EN 1088, EN 954-1, BG-GS-ET-14
Design:	Cylindrical		
Enclosure material:	Glass-fibre reinforced thermoplastic	Glass-fibre reinforced thermoplastic	
Tightening force on nut 24 mm A/F	Tightening force on 2 thermoplastic nuts 36 mm A/F max. 300 Ncm max. 500 Ncm		
Protection class:	IP 67 to IEC/EN 60529/DIN VDE 0470-1		
Termination:	Boflex cable 4 x 0.25 mm ²		Boflex cable 4 x 0.75 mm ²
Mode of operation:	Magnetic		
Limiting distances:	20 mm 32 mm	5 mm 15 mm	
Switching-position indicator:	–	–	LED
Actuator:	Uncoded, BP 10, BP 15 SS	Coded, BPS 300, BPS 303, BPS 303 SS	
Max. switching voltage:			
Without LED	100 VAC/DC		–
With LED	–	24 VDC	250 VAC
With connector	–	–	–
Max. switching current:			
Without LED	250 mA	400 mA	–
With LED	–	10 mA	3 A
Output:	–	–	1 enabling circuit
Operating voltage:	–	–	24 VDC
Operating current:	–	–	30 mA
Max. switching capacity:			–
Without LED	3 VA/W	10 VA/W	–
With LED	–	240 mW	750 VA
Ambient temperature:	– 25 °C ... + 70 °C		– 25 °C ... + 55 °C
Storage and transport temperature:	– 25 °C ... + 70 °C		
Resistance to shock:	30 g / 11 ms		
Resistance to vibration:	10 ... 55 Hz, amplitude 1 mm		

