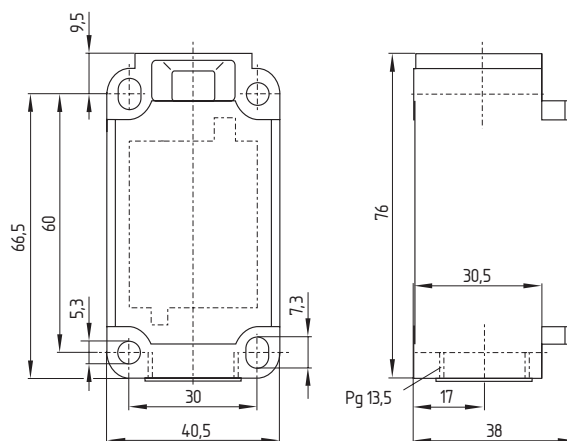


### 3. Position switches with safety function / Class 1

#### 3.7 Z/T 336 range



#### Features

- Thermoplastic enclosure
- Double insulated  $\square$
- Available with 2 positive break NC contacts to EN 60 947-5-1
- Snap action with constant contact pressure up to switching point
- Slow action available with 2 positive break NC contacts
- Slow action available with overlapping or staggered contacts
- Wiring compartment
- Wide range of alternative actuators
- Actuator heads can be repositioned in steps 4 x 90°
- Angle of roller lever adjustable in 10° steps
- Good resistance to oil and petroleum spirit

#### Info

- Available with M 12 plug (A-coding), ordering suffix -ST
- Available with M 12 plug (B-coding), ordering suffix -2310
- Cable entry 1/2" NPT, ordering suffix -NPT
- Cable entry M 20 x 1.5, ordering suffix -M20
- Metal rollers on enquiry

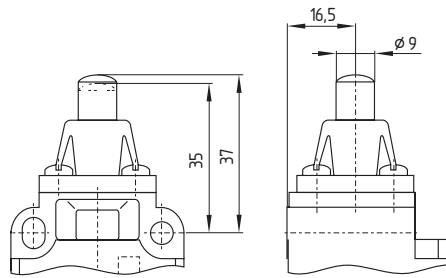
#### Ordering details

Position switch with safety function / class 1 series Z/T 336 with plunger S with snap action with two NC contacts and M 12 plug with B-coding:  
ZS 336-02z-2310

**3. Position switches with safety function / Class 1**  
**3.7 Z/T 336 range**



**Plunger S**

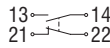


**Features**

- Actuator type B to EN 50041
- Required actuating force  
 12 N for snap action,  
 17 N for slow action
- Actuating speed with actuating angle 0° to switch axis  
 max. 0.5 m/s

**Contacts/  
Switch travel**

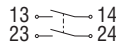
**1 NO**  
**1 NC**



**2 NC**

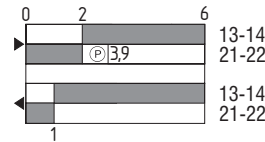


**2 NO**

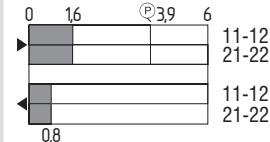


Snap action

**ZS 336 -11z**

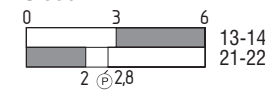


**ZS 336 -02z**

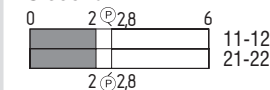


Slow action

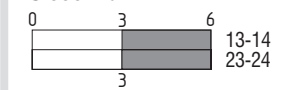
**TS 336 -11z**



**TS 336 -02z**

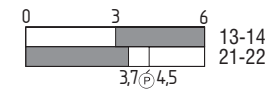


**TS 336 -20z**

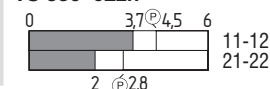


Slow action,  
overlapping contacts

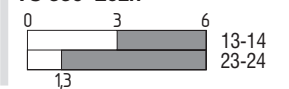
**TS 336 -11zÜ**



**TS 336 -02zh**



**TS 336 -20zh**



### 3. Position switches with safety function / Class 1

#### 3.9 Technical data

	Z/T 256	Z/T 335	Z/T 336
Standards:	IEC/EN 60947-5-1; EN 1088; BG-GS-ET-15		
Design:	Fixings to EN 50047	EN 50047	
Enclosure:	Glass-fibre reinforced thermoplastic, self-extinguishing	Zinc diecasting, enamelled	Glass-fibre reinforced thermoplastic, self-extinguishing
Protection class:	IP 67 to IEC/EN 60529/DIN VDE 0470-1		
Contact material:	Silver		
Contact type:	Change-over with double break Zb or 2 NC contacts, with galvanically separated contact bridges NC contacts with positive break		
Switching system:	⊖ IEC 60947-5-1; ⊕ BG-GS-ET-15; slow or snap action, NC contacts with positive break Snap action Z or slow action T		
Termination:	Screw terminals for max. 2.5 mm <sup>2</sup> cables (including conductor ferrules)		
Rated impulse			
withstand voltage U <sub>imp</sub> :	6 kV	6 kV; -03z, -12z: 4 kV	6 kV
Rated insulation voltage U <sub>i</sub> :	500 V	500 V; -03z, -12z: 250 V	500 V
Thermal test current I <sub>th</sub> :	10 A		
Utilisation category:	AC-15; DC-13		
Rated operating			
current/voltage I <sub>e</sub> /U <sub>e</sub> :	4 A/230 VAC; 2.5 A/400 VAC; 1 A/500 VAC; 1 A/24 VDC		
Max. fuse rating:	10 A (slow blow); 16 A (quick blow), 6 A (slow blow) as positive break position switch		
Ambient temperature:	- 30 °C ... + 80 °C		
Mechanical life:	20 million operations	30 million operations	
Switching frequency:	Max. 5,000/h		
Switching point accuracy:	-		
Actuating speed:**	Z 256: Min. 10 mm/min T 256: Min. 60 mm/min	Z 335: min. 10 mm/min T 335: min. 60 mm/min	Z 336: min. 10 mm/min T 336: min. 60 mm/min
Contact break for			
complete stroke:	Z 256: 2 x 2 mm T 256: 2 x 3.5 mm	-	
Bounce duration:	Z 256: < 3 ms T 256: *	Z 335: * T 335: < 2 ms	Z 336: * T 336: < 2 ms
Switchover time:	Z 256: > 5.5 ms T 256: *	Z 335: < 2 ms T 335: *	Z 336: < 2 ms T 336: *
Positive break force:	See switch description		
Positive break stroke:	See switch description		



\* In accordance with actuating speed

\*\* For the switch plunger