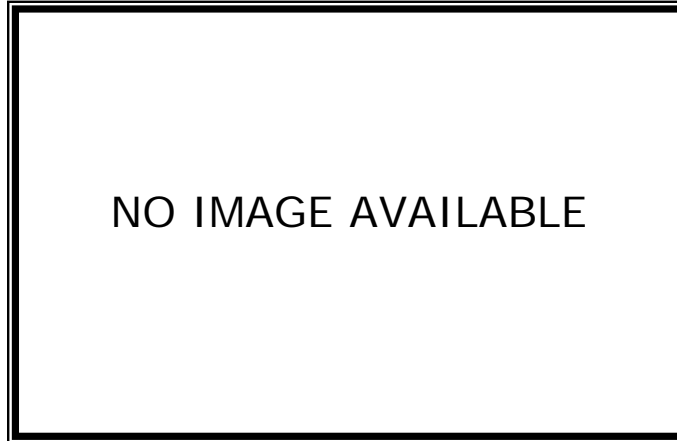


## high resolution TRUE day/night pcb board camera



### features

- ✓ sony 1/3" super HAD colour CCD
- ✓ TRUE day/night operation
- ✓ mechanically removed IR cut filter
- ✓ selectable gain control
- ✓ selectable electronic shutter control
- ✓ selectable back light compensation
- ✓ 3.6mm lens

### technical data

image sensor	sony 1/3-inch super HAD colour CCD
effective pixels	752 x 582
resolution	480 TVL (day), 520TVL (night)
electronic shutter	1/50 – 1/100,000 seconds
sensitivity	0.5 lux (day), 0.05 lux (night) @ f1.4
signal to noise ratio	greater than 48dB (agc off)
white balance	automatic
lens	3.6mm
power consumption	4W, maximum (300mA)
video output	1V p-p ~ 75Ω
dimensions	38mm x 38mm, double board
power supply	12V ± 10% regulated power supply
operating temperature	-10° C ~ +50° C
operating humidity	10% ~ 90%

#### Genie CCTV Limited

Unit D city park, 26 watchmead, welwyn garden city, herts AL7 1LT  
 tel: +44(0) 1707 330541 fax +44(0) 1707 330543  
 website: [geniecctv.com](http://geniecctv.com) email: [info@geniecctv.com](mailto:info@geniecctv.com)