



ENCLOSING ELECTRONICS ONE BOX AT A TIME

ENCLOSURES & ASSEMBLY SERVICES

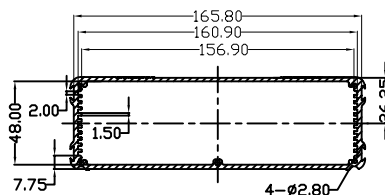
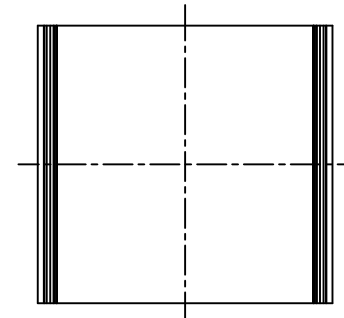
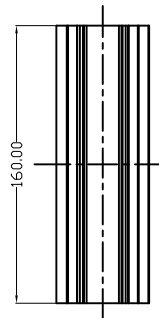
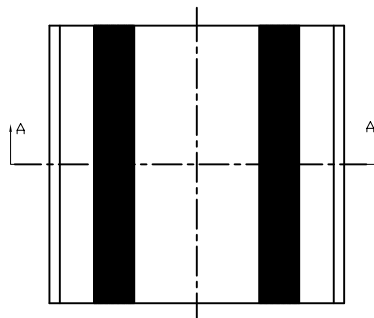
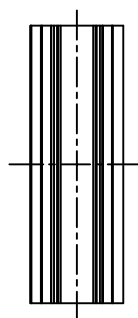
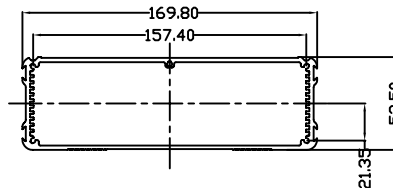
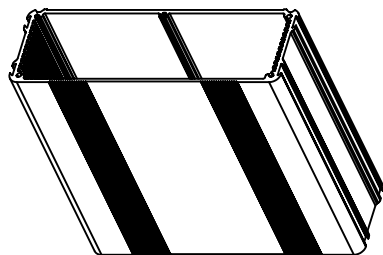
BOX ENCLOSURES, INC

28835 N. HERKY DRIVE, #114,
LAKE BLUFF, IL 60044

TEL: 847-932-4700

WWW.BOXENCLOSURES.COM

FAX: 847-932-4701



SECTION A-A

		ENCLOSING ELECTRONICS ONE BOX AT A TIME		Revision:	
		ENCLOSURES & ASSEMBLY SERVICES		Model:	
Title		BEX-1604	Dwg. No.:	Part No.:	
Material:	TOLERANCE all dimension in mm unless otherwise specified		Color:	Drn. Date	JimJR 11-27-2004
Finish:	.x ±0.20 .xx ±0.10 .xxx ±0.05		Qty:	Chk. Date	
ONLY FOR Proj.		ANGLE ±0.5°	A4	Sheet	App. Date
				1 of 1	

THIS DRAWING IS THE PROPERTY OF AND MAY EMBODY PROPRIETARY INFORMATION OWNED BY X-Box Enclosures. IT IS PROVIDED UNDER A CONFIDENTIAL RELATIONSHIP FOR A SPECIFIC PURPOSE. THE RECIPIENT AGREES TO USE IT FOR SUCH PURPOSE AND RETURN IT TO X-Box Enclosure UPON REQUEST.