



ENCLOSING ELECTRONICS ONE BOX AT A TIME

ENCLOSURES & ASSEMBLY SERVICES  
ENCLOSURES & ASSEMBLY SERVICES

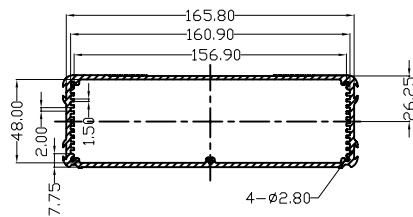
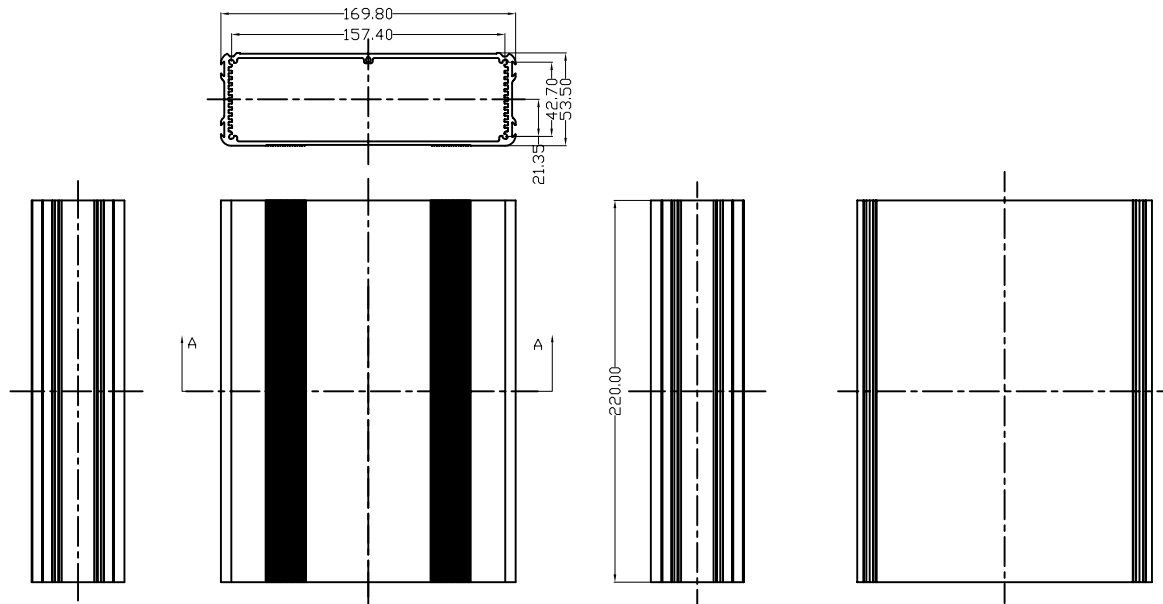
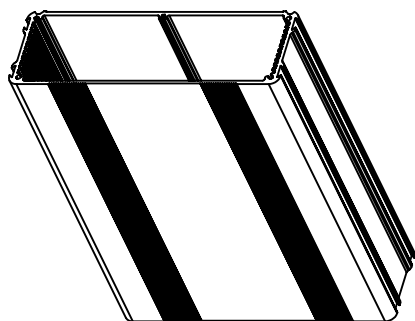
BOX ENCLOSURES, INC

28835 N. HERKY DRIVE, #114,  
LAKE BLUFF, IL 60044

TEL: 847-932-4700

WWW.BOXENCLOSURES.COM

FAX: 847-932-4701



SECTION A-A

		ENCLOSING ELECTRONICS ONE BOX AT A TIME		Revision:	
ENCLOSURES & ASSEMBLY SERVICES		ENCLOSURES & ASSEMBLY SERVICES		Model:	
Title		BEX-2204		Dwg. No.:	
Material:		TOLERANCE		Color:	
Finish:		all dimension in mm		Drn. Date	
Proj.		unless otherwise specified		JimJR 11-27-2004	
		x ±0.20 .x ±0.10 .xx ±0.05 ANGLE ±0.5°		Chk. Date	
		A4		App. Date	
		Sheet 1 of 1			

THIS DRAWING IS THE PROPERTY OF AND MAY EMBODY PROPRIETARY INFORMATION OWNED BY X-Box Enclosures. IT IS PROVIDED UNDER A CONFIDENTIAL RELATIONSHIP FOR A SPECIFIC PURPOSE. THE RECIPIENT AGREES TO USE IT FOR SUCH PURPOSE AND RETURN IT TO X-Box Enclosure UPON REQUEST.