

**BRACKETS**  
50001>50160

**50001 Right Angled Wall Bracket**  
Suitable for use with 88, 125 & 201/200 series beacons

**50004 Right Angled Wall Bracket**  
Suitable for use with 401/400, 501/500, 600 & X250 series beacons

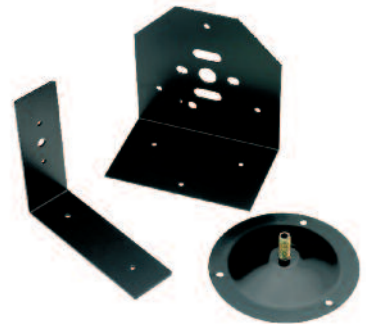
**50006 Pipe Bracket**  
Suitable for use with 401/400, 501/500, 600 & X250 series beacons

**50007 Right Angled Wall Bracket**  
Suitable for use with 125 & 125 DIN series beacons [not shown]

**50159**  
Single Bracket with Cable Box ICAO

Suitable for use with LED 501/500 & X250 series beacons

**50160**  
Double Bracket with Cable Box ICAO  
Suitable for use with LED 501/500 & X250 series beacons



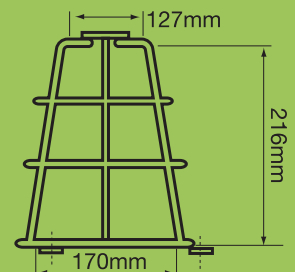
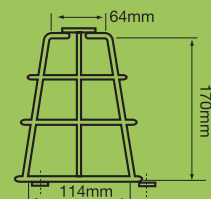
**CAGE GUARDS**  
50003>50010

**50003 Small Cage Guard**

**50003/1 Optional Mounting Plate**  
Suitable for use with 125 series beacons

**50010 Large Cage Guard**

**50010/1 Optional Mounting Plate**  
Suitable for use with 201/200, 401/400 & 501/500 series beacons



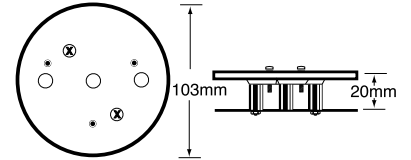
# ACCESSORIES

## ANTI - VIBRATION MOUNT

50080



50080 Anti-Vibration Mount  
Suitable for use with 88, 125, 201/200  
series beacons



## SPARE LENS COVERS

50018>50022

50018 Red Lens

50019 Amber Lens

50020 Blue Lens

50021 Green Lens

50022 Clear Lens  
All suitable for use with 125  
series beacons only



## SPARE LENS COVERS

50064>50068

50064 Amber Lens

50065 Red Lens

50066 Blue Lens

50067 Green Lens

50068 Clear Lens  
All suitable for use with 88, 98,  
201/200, 401/400 & 501/500  
series beacons

