

M1

Panel Mounted

Keyswitches

M1

Panel cut-out (mm) \square 15.1 × 15.1

Characteristics

- double pole change-over or three circuit selector switching functions
- key trapping option
- two body style options
- gold-plated contacts
- PCB Terminals

Rating 250 VAC, 100 mA

Dimensions (mm) 18 × 16
body style A
18 × 18
body style E

Actuator ■ key (common or differs)

Approvals none



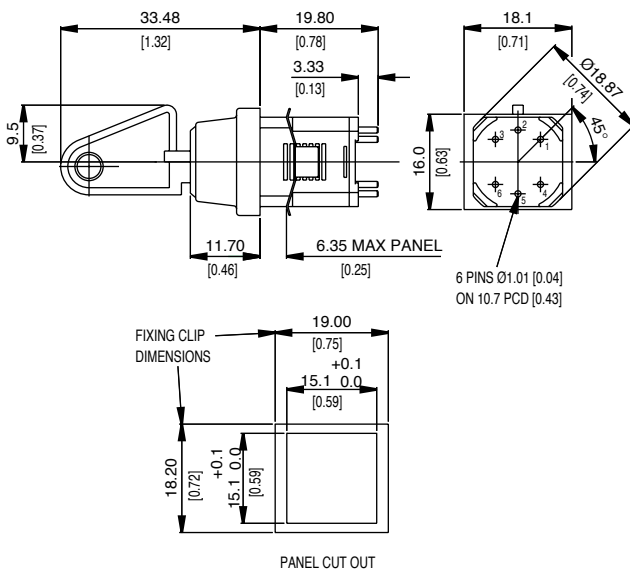
Preferred Range

Ordering Reference	Terminal	Circuit	Actuator	Contacts	Electrical rating
M1HAAAAE	Pins	2 pole CO	Key	Gold-plated	250 VAC, 100 mA
M1HAEAAE	Pins	2 pole CO	Key	Gold-plated	250 VAC, 100 mA
M1HAAAAJ	Pins	3 circuit selector	Key	Gold-plated	250 VAC, 100 mA

Specifications

Key	Nickel silver
Body	Glass-fibre reinforced nylon
Springs	Stainless steel
Contacts	Moving - gold-plated phosphor bronze, Fixed - gold-plated brass
Terminals	1.01 mm (0.04 in) dia × 3.3 mm (0.13 in) gold-plated brass
Temperature range °C	-20°C to +60°C
Mechanical life	50,000 operations (minimum)
Mounting	Retaining clip
Actuators	Key
Switching function	Double pole change-over, three circuit selector
Key indexing	90°

Dimensions



Recommended maximum electrical ratings

Voltage (max)	Resistive load (A)	Inductive load	Horsepower	Approval
250 VAC	100 mA	-	-	General rating - 50,000 operations
0-15 VDC	100 mA	-	-	General rating - 50,000 operations
15-30 VDC	100 mA	-	-	General rating - 50,000 operations

Operating Characteristics

Switching function	Reference	Actuator		Body style (mm)	Key trapping	Diagram
		Type	Code			
Double pole change-over	M1BAAAAE	Key	001	A - 18 × 16	No	
	M1HAAAAE	Key	007	A - 18 × 16	No	
	M1HAEAAE	Key	007	E - 18 × 18	No	
	M1MAAAAE	Key	Production run key coding	A - 18 × 16	No	
	M1MAEAAE	Key	Production run key coding	E - 18 × 18	No	
Double pole change-over	M1MCAAEE	Key	Production run key coding	A - 18 × 16	Yes	
	M1MCEAAE	Key	Production run key coding	E - 18 × 18	Yes	
Three circuit selector	M1HAAAAJ	Key	007	A - 18 × 16	No	
	M1HAEAAJ	Key	007	E - 18 × 18	No	
	M1MAAAAJ	Key	Production run key coding	A - 18 × 16	No	
	M1MAEAAJ	Key	Production run key coding	E - 18 × 18	No	

Type coding key for standard products

Basic type	M1	Example: M1	B	A	A	A	A	E
Keycode	B 001 key H 007 key M Production run key coding							
Key trapping	A Key removable in all positions C Key trapped horizontally, right							
Body style	A 18.0 mm (0.710 in) × 16.0 mm (0.630 in) rectangular bezel E 18.0 mm (0.710 in) square bezel							
Body colour	A Black							
Terminal	A 1.01 mm (0.040 in) dia × 3.30 mm (0.130 in)							
Switching function	E Double pole change-over J Three circuit selector							