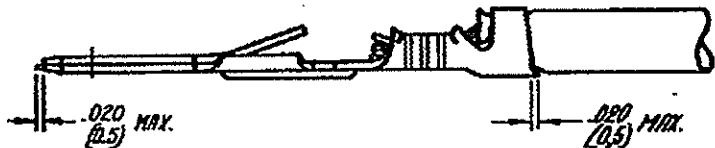


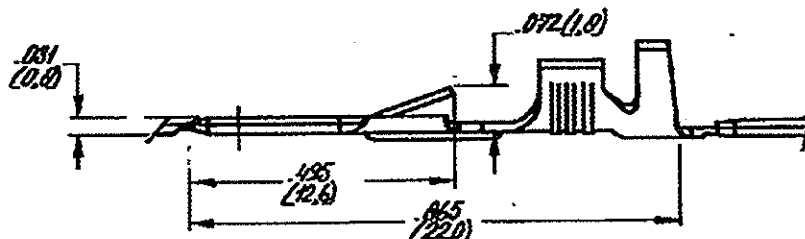
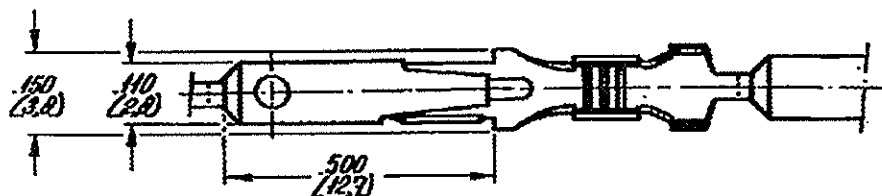
DRAWING C-160.762

DRAWING MADE IN AMERICAN PROJECTION

LTR	DESCRIPTION	DATE	DR	APD
L1	ECO-10-000444	12JAN10	KK	AEG



2 OBSOLETE PARTS: OBSOLETE CIS STREAMLINING PER D.RENAUD/D.SINISI



NOTE: REELED WITH PAPERCOVER

REV. L AS PER ECR.06-024596

DIMENSIONS IN () DO NOT SCALE PRINT

ORDER NO.	MATERIAL	PLATING
160762-6	BRASS	UNPLATED
160762-5	PHOSPH. BRZ.	UNPLATED
160762-4	BRASS	PRE TIN PL
160762-3	BRASS	
160762-2	PHOSPH. BRZ.	PRE TIN PL
160762-1	PHOSPH. BRZ.	

CUSTOMER COPY FOR REFERENCE ONLY

©1976 BY AMP-HOLLAND N.V. ALL RIGHTS RESERVED A-MP PRODUCTS COVERED BY PATENTS AND/OR PATENTS PENDING.

AMP
AMP-HOLLAND N.V.
's-Hertogenbosch

WIRE RANGE 0.5-1.5mm ²	WIRE RANGE 18-22 AWG	FIRST USED
SCALE 4:1	SIZE A	NO C-160.762
DATE 24.8.76		DATE 24.8.76
NAME .110 SER. FASTIN-FASTON TAB.		REV L1

AMP 172-H