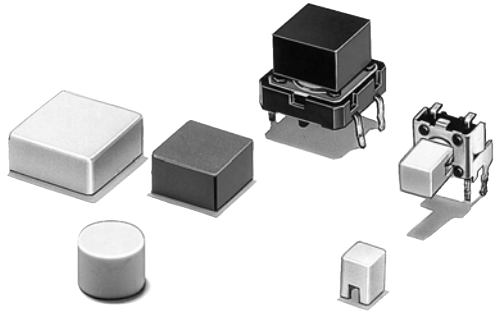


## Key Top Designed Specially for Projected-plunger-type B3F and B3W Switches

- ROHS compliant.
- Available in a wide range of colors and sizes.



## Ordering Information

### For B3F and B3W Switches

#### New

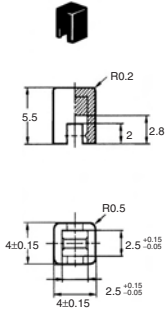
Colour	6 x 6 mm Switches B3F-1000, B3F-3000, B3W-1000, B3FS)			12 x 12 mm Switches (B3F-4000, B3F-5000, B3W-4000)		
	4 x 4 mm Key Top	6 mm dia.	D shape	9 x 9 mm Key Top	12 x 12 mm Key Top	9.5-mm dia.
Light Grey	B32-1000	B32-2000	B32-2100	B32-1200	B32-1300	B32-1600
Black	B32-1010	B32-2010	B32-2110	B32-1210	B32-1310	B32-1610
Orange	B32-1020	-	-	B32-1220	B32-1320	B32-1620
Yellow	B32-1030	-	-	B32-1230	B32-1330	B32-1630
Blue	B32-1040	-	-	B32-1240	B32-1340	-
Green	B32-1050	-	-	B32-1250	B32-1350	-
White	B32-1060	-	-	B32-1280	B32-1380	-
Red	B32-1080	-	-	B32-1280	B32-1380	-

# Tactile Switch Key Top – B32

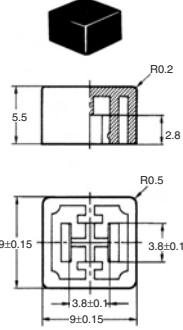
## Dimensions

**Note:** All units are in millimetres unless otherwise indicated. Unless otherwise specified, a tolerance of  $\pm 0.4$  mm applies to all dimensions.

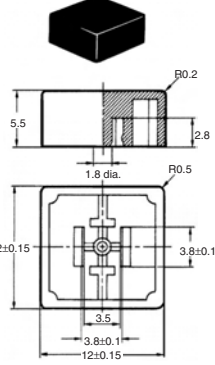
**B32-10□□**



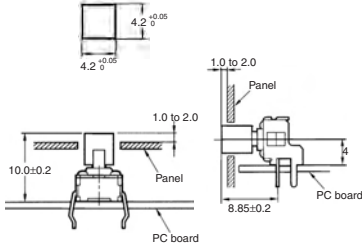
**B32-12□□**



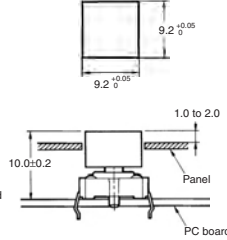
**B32-13□□**



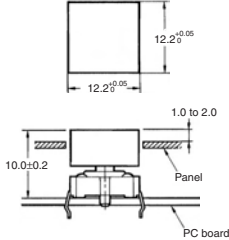
**Panel Cutout**



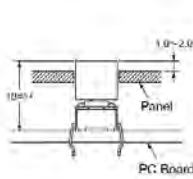
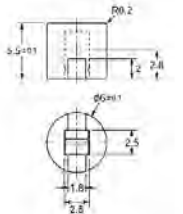
**Panel Cutout**



**Panel Cutout**



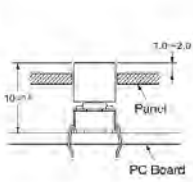
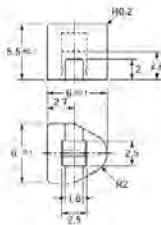
**B32-2000**  
**B32-2010**



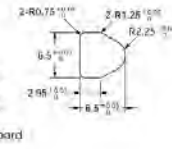
**Panel Cutout**



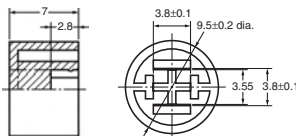
**B32-2100**  
**B32-2110**



**Panel Cutout**



**B32-16□□**



**Panel Cutout**

